

**FM100 Float Module / 872, 873, CA20, CA25, and CA25E Combine Adapters
ROTATING TINE DRUM (RTD) REPAIR KIT (MD #335464)
INSTALLATION INSTRUCTIONS**

The RTD Repair kit (MD #335464) can be used to repair damage (A) around a finger on the feed auger drum on FM100 Float Modules, and 872, 873, CA20, CA25, and CA25E Combine Adapters. A separate kit is required for each damaged area. This document explains how to install the kit.

A list of parts included in the kit is provided.

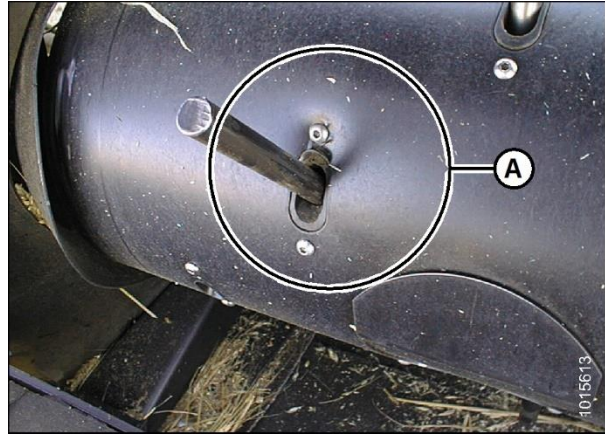


Figure 1: Damaged Area on Feed Auger Drum

NOTE: Keep your MacDon publications up-to-date. The most current version of this instruction can be downloaded from our Dealer-only site (<https://portal.macdon.com>) (login required).

NOTE: This document is currently available in English only.

Installation Time

Installation time for this kit is approximately 30 minutes.

Conventions

The following conventions are used in this document:

- Right and left are determined from the operator's position. The front of the float module or combine adapter is the side that faces the crop; the back is the side that connects to the combine.
- Unless otherwise noted, use the standard torque values provided in the header operator's manual and technical manual.

**FM100 Float Module / 872, 873, CA20, CA25, and CA25E Combine Adapters
 ROTATING TINE DRUM (RTD) REPAIR KIT (MD #335464)
 INSTALLATION INSTRUCTIONS**

Parts List

A parts list is provided in this instruction so that you can confirm that you have received all required parts before you begin installation.

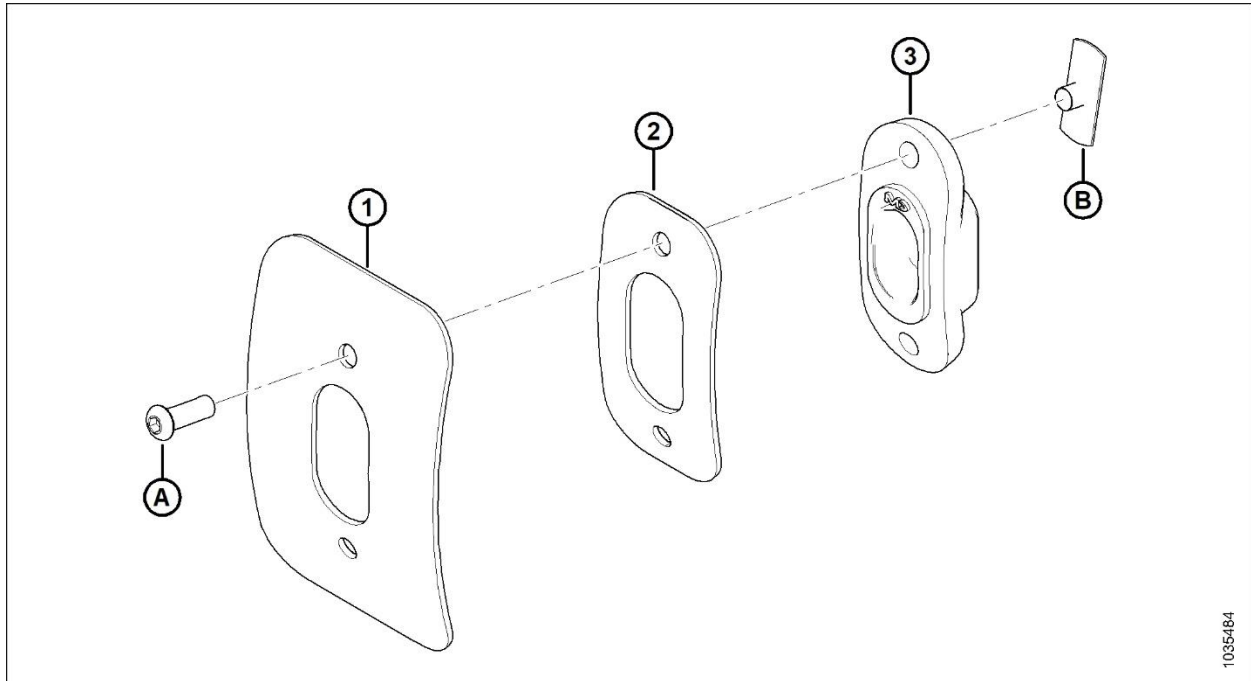


Figure 2: Parts Included in RTD Repair Kit

Ref	Part Number	Description	Quantity
1	NSS ¹	BAND – 120 MM LONG	1
2	NSS ¹	BAND – RTD KIT, 90 MM LONG	1
3	337143	GUIDE	1
A	123084	SCREW – HEX SOCKET BUTTON HEAD	2
B	123202	NUT – TEE	2

¹ Not sold separately.

**FM100 Float Module / 872, 873, CA20, CA25, and CA25E Combine Adapters
ROTATING TINE DRUM (RTD) REPAIR KIT (MD #335464)
INSTALLATION INSTRUCTIONS**

Installation Instructions

To install the RTD Repair kit, follow these steps:

NOTE: Throughout these instructions, when parts included in the kit are initially referenced, the part name is followed by its MacDon part number (MD #xxxxxx). If the part is not sold separately, the part name is followed by (MD #NSS). For more information, cross reference the part number to the parts list description and illustration.



CAUTION

To avoid bodily injury or death from unexpected startup of the machine, always stop the engine and remove the key from the ignition before leaving the operator's seat for any reason.

1. Turn off the engine, and remove the key from the ignition.
2. Remove attaching screws (A), and then remove access panel (B) closest to the damaged area.

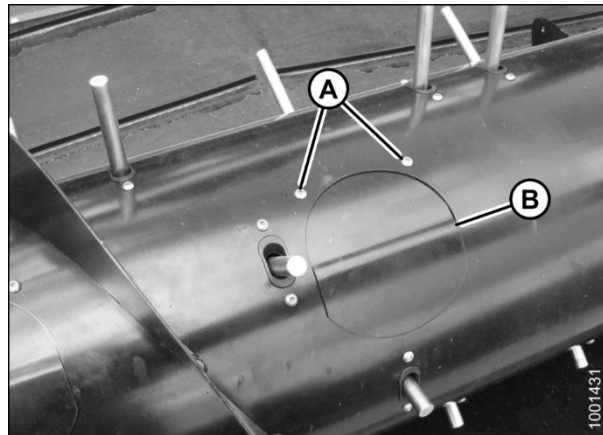


Figure 3: Access Panel

3. In the damaged area, from inside the auger drum, remove hairpin (A), and then pull finger (B) out of bushing (C). Retain hairpin for reassembly.
4. From inside the auger drum, swivel the finger away from the bushing, pull it from guide (D), and remove the finger from the auger. Retain finger for reassembly.
5. Remove screws securing plastic guide (D) to the auger, and remove the guide from inside the auger. Discard the guide and the screws.
6. Clean any crop debris out from the inside of the drum to prevent fire from grinding or welding during the following steps.

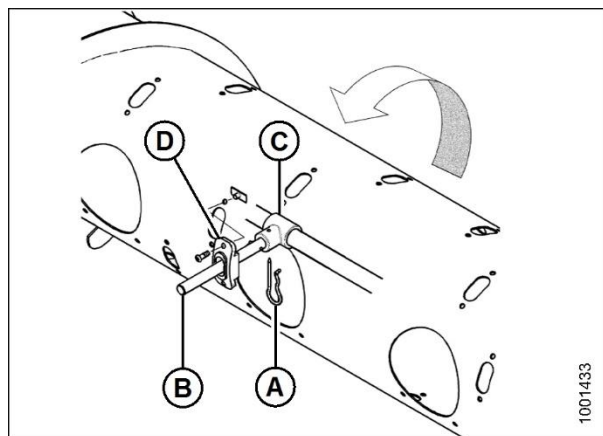


Figure 4: Auger Finger

**FM100 Float Module / 872, 873, CA20, CA25, and CA25E Combine Adapters
ROTATING TINE DRUM (RTD) REPAIR KIT (MD #335464)
INSTALLATION INSTRUCTIONS**

7. Using the smaller of the two bands (MD #NSS) provided in the kit as a template, cut out the damaged portion of the drum to the dimensions shown below: B = 45 mm (1 3/4 in.), C = 90 mm (3 1/2 in.). Ensure the cutout is slightly larger than 90 mm band (A).

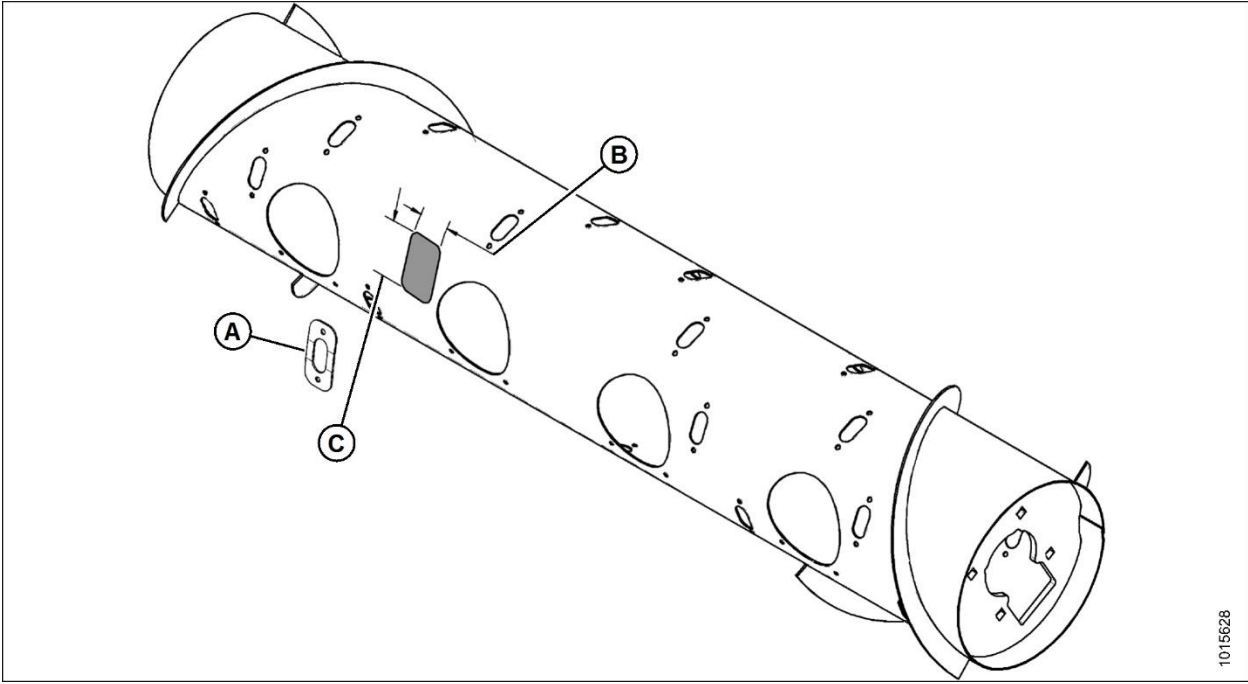


Figure 5: Cutout Measurements

**FM100 Float Module / 872, 873, CA20, CA25, and CA25E Combine Adapters
ROTATING TINE DRUM (RTD) REPAIR KIT (MD #335464)
INSTALLATION INSTRUCTIONS**

8. Assemble the parts provided in the kit—screws (A) (MD #123084), bands (B) and (C) (MD #NSS), guide (D) (MD #337143), and tee nuts (E) (MD #123202)—as shown, and clamp the assembly on the outside of the auger drum, centering smaller band (C) in the cutout made in the previous step.

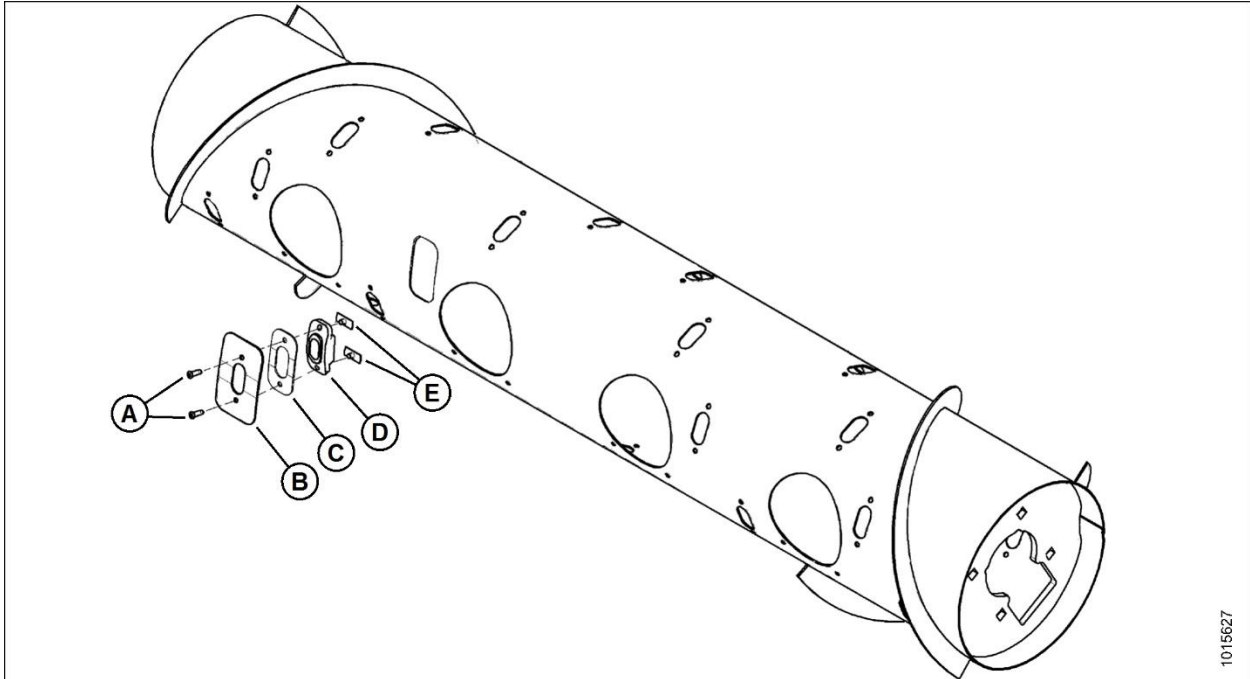


Figure 6: Assembling RTD Repair Kit Parts

9. Tack weld larger band (B) to the auger drum in four places.
10. Remove two screws (A), plastic guide (D), and two tee nuts (E) to prevent the plastic guide from melting in the next step.
11. Place a 2 mm fillet weld all the way around larger band (B).
12. Replace two screws (A), plastic guide (D), and two tee nuts (E) onto bands (B) and (C).

**FM100 Float Module / 872, 873, CA20, CA25, and CA25E Combine Adapters
ROTATING TINE DRUM (RTD) REPAIR KIT (MD #335464)
INSTALLATION INSTRUCTIONS**

13. Insert retained auger finger (B) through the new bands and new guide (D).
14. Inside the auger drum, reinstall auger finger (B) in bushing (C) and fasten it in place with retained hairpin (A).

NOTE: Install the hairpin with the closed end facing the direction of crop flow as shown in the illustration at right.

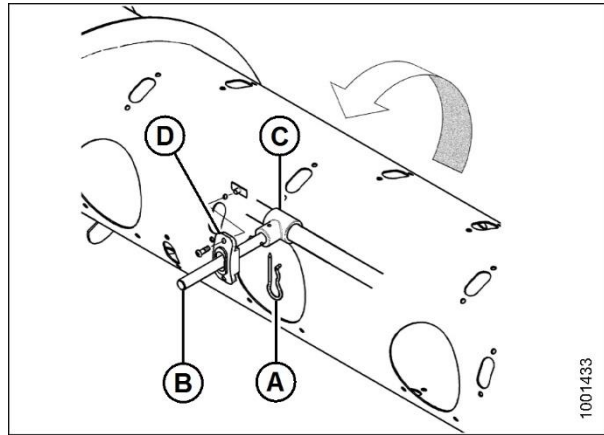


Figure 7: Auger Finger

15. Replace access panel (B), and fasten it in place with screws (A).

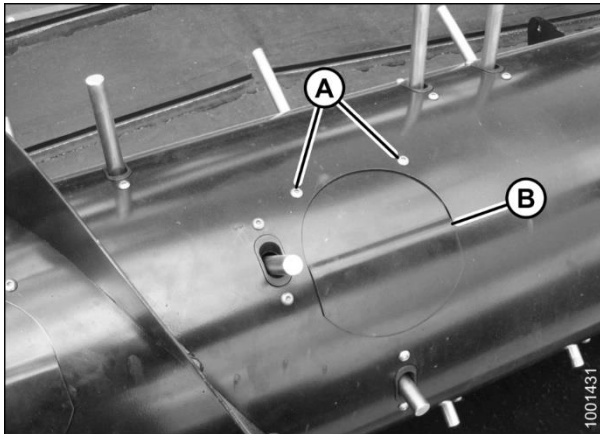


Figure 8: Access Panel

© 2021 MacDon Industries, Ltd.

The information in this publication is based on the information available and in effect at the time of printing. MacDon Industries, Ltd. makes no representation or warranty of any kind, whether expressed or implied, with respect to the information in this publication. MacDon Industries, Ltd. reserves the right to make changes at any time without notice.