

**M155, M155E4, M205 Self-Propelled Windrowers
AIR CONDITIONING POWER UPDATE KIT (MD #160639)
INSTALLATION INSTRUCTIONS**

The Air Conditioning Power Update kit (MD #160639) should be used on MacDon M155, M155E4, and M205 Self-Propelled Windrowers, model years 2015–2019, to re-route air conditioning (A/C) control power and improve reliability.

A list of parts included in the kit is provided.

NOTE: Keep your MacDon publications up-to-date. The most current version of this instruction can be downloaded from our Dealer-only site (<https://portal.macdon.com>) (login required).

NOTE: This document is available in English only.

Installation Time

Installation time for this kit is approximately 1 hour and 15 minutes.

Conventions

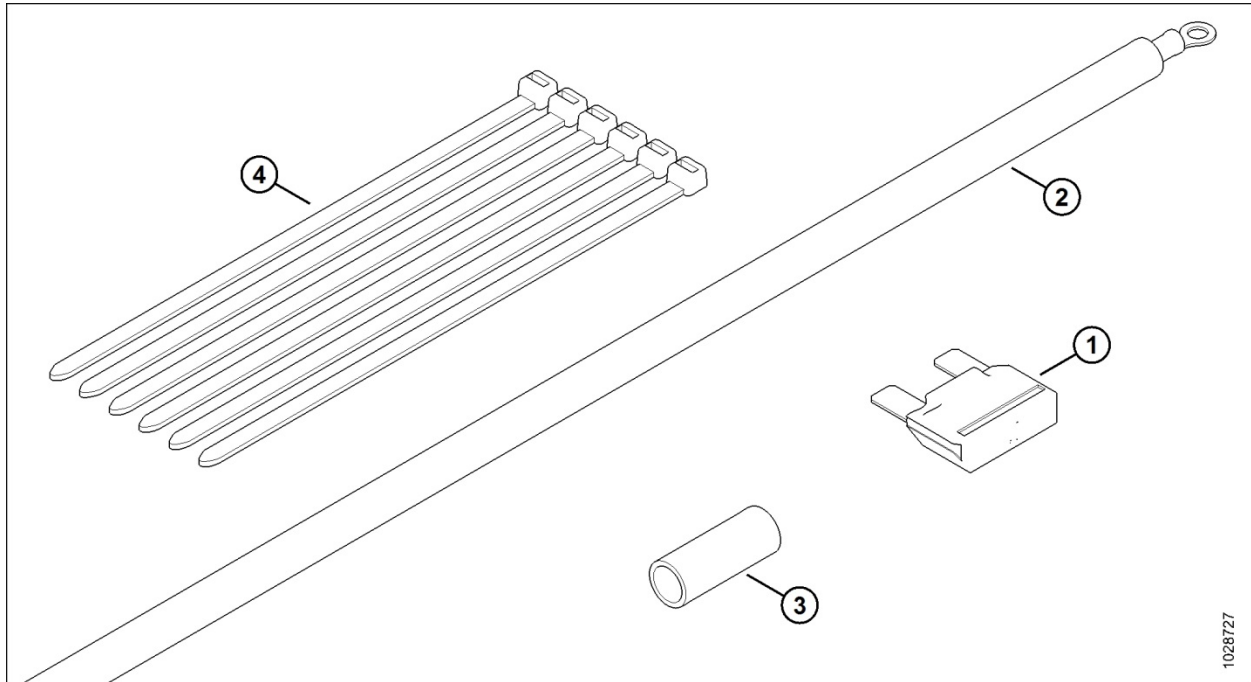
The following conventions are used in this document:

- Right and left are determined from the operator's position, facing forward with the windrower in cab-forward position.
- Unless otherwise noted, use the standard torque values provided in the windrower operator's manual and technical manual.

**M155, M155E4, M205 Self-Propelled Windrowers
AIR CONDITIONING POWER UPDATE KIT (MD #160639)
INSTALLATION INSTRUCTIONS**

Parts List

This kit includes the following parts:



Ref	Part Number	Description	Quantity
1	NSS ¹	FUSE – MAXI, 40A, ORG	1
2	160638	HARNESS – A/C POWER REWORK	1
3	NSS ¹	TUBE – HEAT SHRINK, 3/8 X 1 ¼	1
4	21763	FASTENER – CABLE TIE, BLACK	6

¹ Not sold separately.

**M155, M155E4, M205 Self-Propelled Windrowers
AIR CONDITIONING POWER UPDATE KIT (MD #160639)
INSTALLATION INSTRUCTIONS**

Installation Instructions

To install the Air Conditioning Power Update kit, follow these steps:



WARNING

To avoid bodily injury or death from the unexpected startup of the machine, always stop the engine and remove the key from the ignition before leaving the operator's seat for any reason.

1. Stop the engine and remove the key.
2. Open the right platform. For instructions, refer to the windrower operator's manual or technical manual.
3. Turn the battery main disconnect switch (A) to the POWER OFF position.

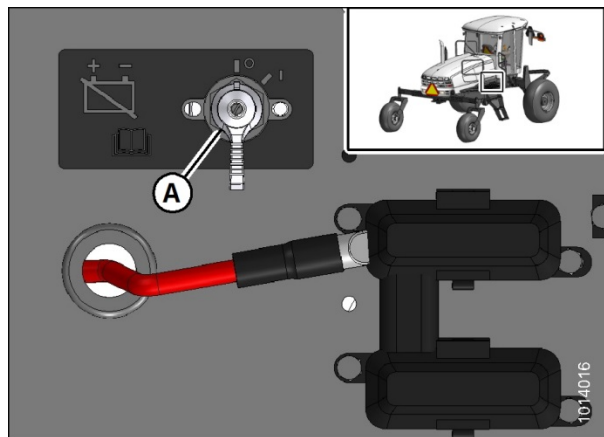


Figure 1: Battery Main Disconnect Switch

4. Inside the cab, remove the screws attaching the right headliner switch panel to the headliner. Retain screws for reassembly.
5. Pull the right headliner switch panel off the headliner and let it hang down.



Figure 2: Right Headliner Switch Panel

**M155, M155E4, M205 Self-Propelled Windrowers
AIR CONDITIONING POWER UPDATE KIT (MD #160639)
INSTALLATION INSTRUCTIONS**

6. Outside the cab, on the right side, locate the fresh air filter.
7. Rotate latch (A) and slide filter tray (B) out of the housing. Retain for later reinstallation.

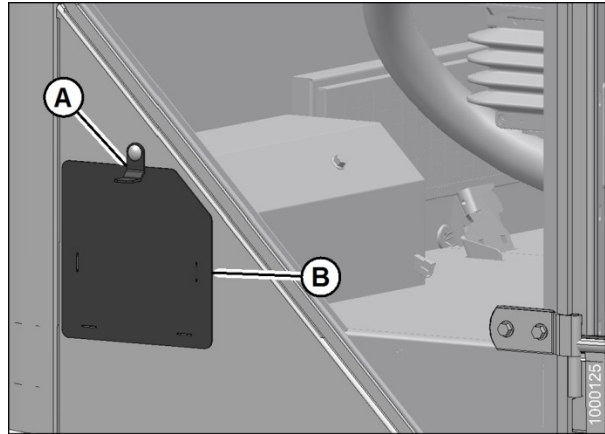


Figure 3: Fresh Air Filter

8. Remove the corner post seal from the bottom of the right rear cab post. Retain for later reinstallation.
9. Inside the air filter compartment there is a hole into the cab post. From this hole, pull back any excess wiring from the cab post into the air filter compartment. This will make routing the new wire easier.

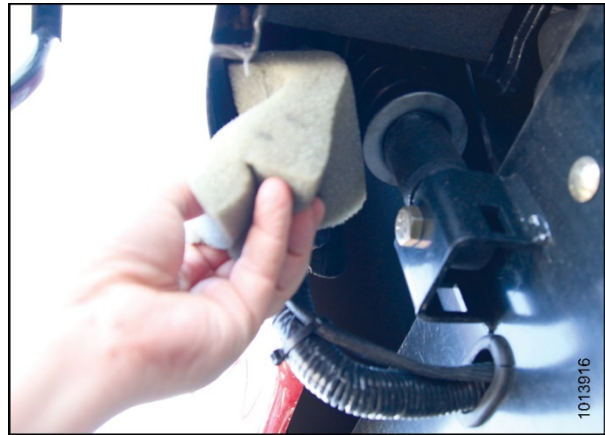


Figure 4: Bottom of Right Rear Cab Post

**M155, M155E4, M205 Self-Propelled Windrowers
AIR CONDITIONING POWER UPDATE KIT (MD #160639)
INSTALLATION INSTRUCTIONS**

10. Inside the cab, reach through the opening in the headliner where the right headliner switch panel was, and locate the hole at the top of the right rear cab post.
11. Push a stiff wire (A) or electrician's fish tape down through the right rear cab post so that one end remains accessible through the hole in the headliner.

NOTE: It is easier to start the stiff wire in the far corner of the hole, going overtop the existing wires. Some sealant may be on top of the wires and need to be removed; it can be replaced afterwards.

12. Locate the end of the stiff wire at the bottom of the right rear cab post. If the wire has not protruded out of the post, you may need to reach into the access hole in the air filter compartment to locate it, then push it out the bottom of the cab post.



Figure 5: Routing Stiff Wire Through Opening in Headliner

13. Tape the female terminal end (A) of the new A/C power rework harness (MD #160638) to the bottom end of stiff wire (B).
14. From inside the cab, gently pull stiff wire (B) to route the new wiring harness up through the right rear cab post into the roof. Pull in enough length to route the wire to the right headliner switch panel, which is currently hanging down from the opening in the headliner.
15. Remove the tape attaching stiff wire (B) to the wiring harness.

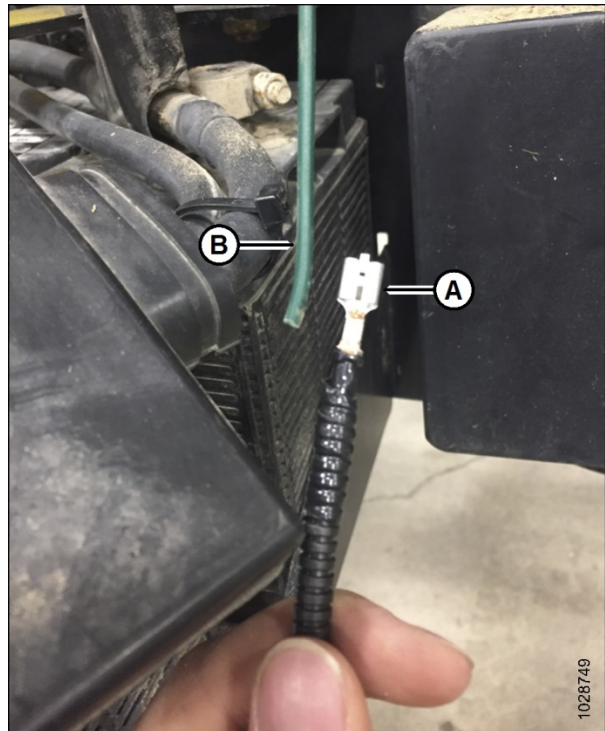


Figure 6: Connecting Stiff Wire to New Harness

**M155, M155E4, M205 Self-Propelled Windrowers
AIR CONDITIONING POWER UPDATE KIT (MD #160639)
INSTALLATION INSTRUCTIONS**

16. On the back of the right headliner switch panel, disconnect connector P23 from the fan speed switch.
17. Using a small screwdriver, remove the terminal of wire RF51E from opening (A) in the housing of connector P23.

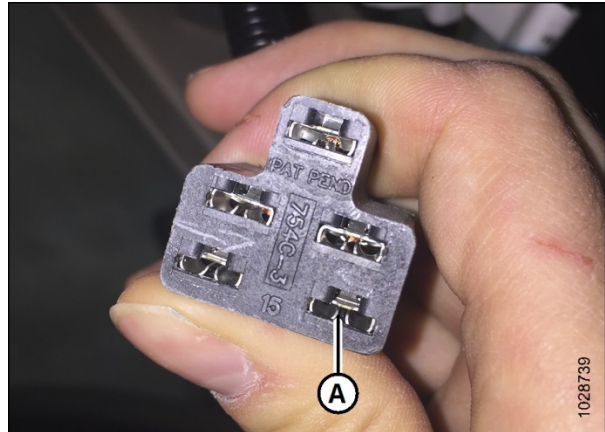


Figure 7: Connector P23

18. Insert the female terminal on the new wiring harness (A) into the open position in connector P23 (B). The terminal will clip into the housing. Do a light pull test to ensure the terminal is fully seated.
19. Insulate the exposed end of wire RF51E (C) with electrical tape or the heat shrink tubing provided in this kit. Once insulated, tuck the wire back into its loom or tape it back against the harness.
20. Reconnect P23 to the blower fan switch and use one of the included cable ties (MD #21763) to secure the new wire to the existing wiring harness.

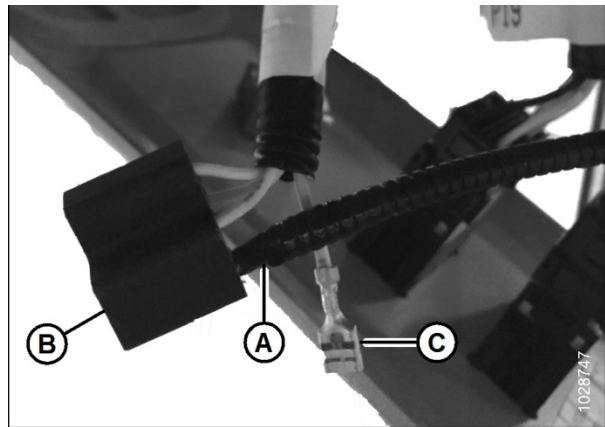


Figure 8: Electrical Connections Inside Cab

**M155, M155E4, M205 Self-Propelled Windrowers
AIR CONDITIONING POWER UPDATE KIT (MD #160639)
INSTALLATION INSTRUCTIONS**

21. At the bottom of the right rear cab post, route the new harness (A) through hole (B) in the frame. Secure the new harness to the existing ones with a cable tie (C) (MD #21763), but do not tighten it yet.

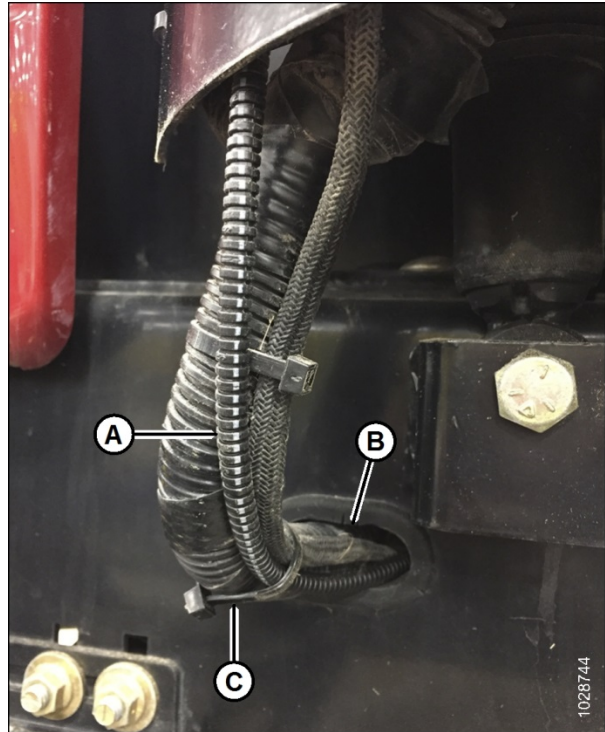


Figure 9: Harness Routing Below Right Rear Cab Post

22. Route the new harness (A) along with the existing roof harness (B) below the cab towards the A/C box. Loosely secure the harness with four cable ties (C) (MD #21763), spaced to prevent any drooping or sagging loops. Do **NOT** tighten the cable ties yet.

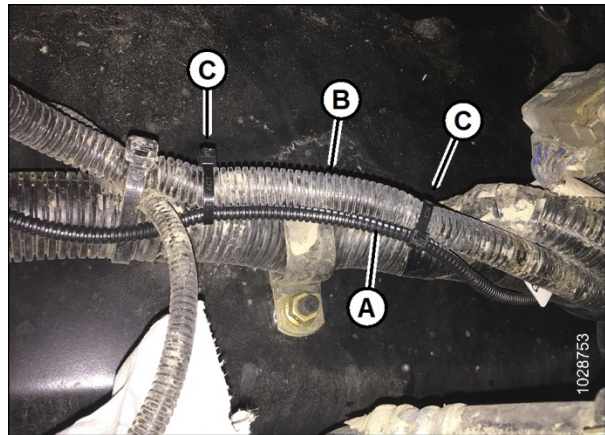


Figure 10: Harness Routing Below Cab

**M155, M155E4, M205 Self-Propelled Windrowers
AIR CONDITIONING POWER UPDATE KIT (MD #160639)
INSTALLATION INSTRUCTIONS**

23. Connect the ring terminal of the new harness (A) to the positive stud (B) on the rear of the A/C box. Place the new terminal under the existing terminal so that it gets covered by the existing boot (C).
24. If there is any excess harness slack under the cab, pull it back up into the roof. Once the routing is complete, tighten the cable ties that were applied in the previous steps, and trim off any excess cable tie length.

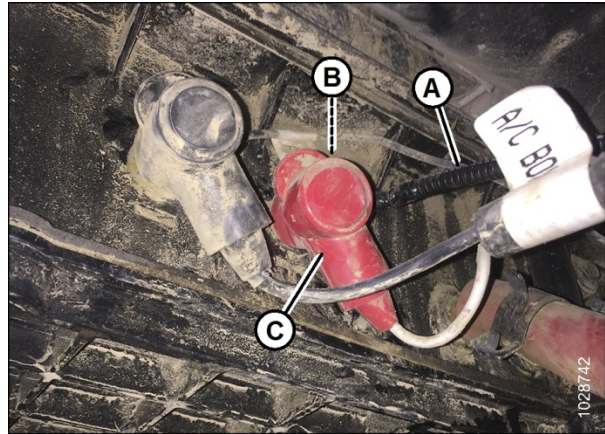


Figure 11: Electrical Connections on Rear Side of A/C Box

25. Reinsert the corner post seal into the bottom of the right rear cab post.

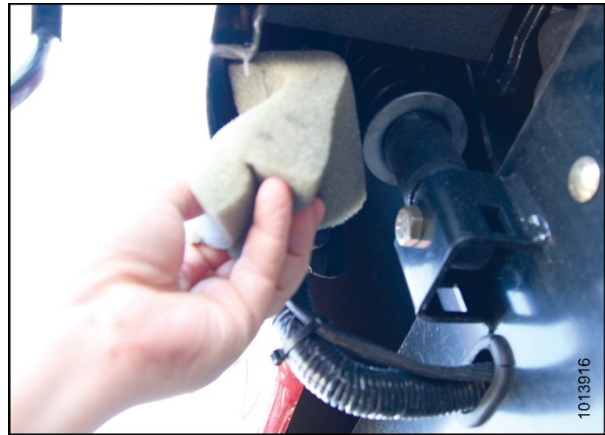


Figure 12: Bottom of Right Rear Cab Post

26. Reinstall the fresh air filter pan (A) and filter.



Figure 13: Reinstalling Air Filter Pan and Filter

**M155, M155E4, M205 Self-Propelled Windrowers
AIR CONDITIONING POWER UPDATE KIT (MD #160639)
INSTALLATION INSTRUCTIONS**

27. Reinstall the right cab switch panel.



Figure 14: Right Headliner Switch Panel

28. Locate the fuse box on the right side of the windrower.
29. Remove wing nut (A), and then remove fuse box cover (B).
30. Replace fuse F1 with the 40A fuse included with this kit.

NOTE: The decal on the inside cover of the fuse box will show you where to find fuse F1.

31. Reinstall fuse box cover (B).

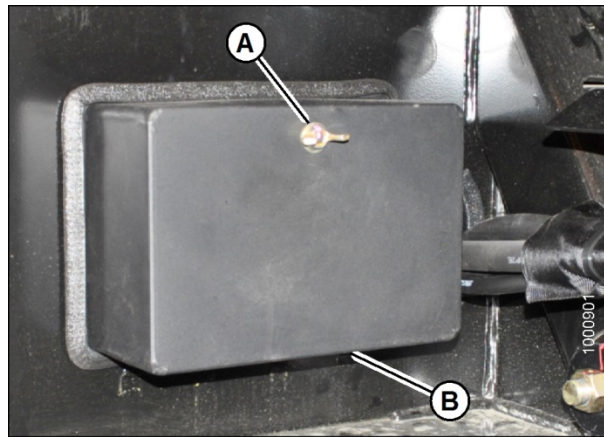


Figure 15: Fuse Box

32. Turn the BATTERY MAIN DISCONNECT switch (A) to the POWER ON position.
33. Close the right platform. For instructions, refer to the windrower operator's manual or technical manual.

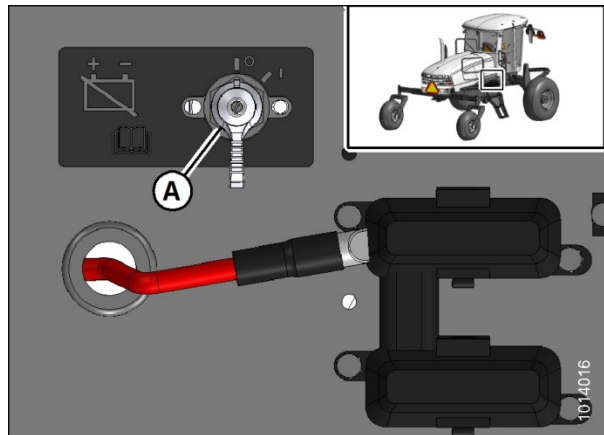


Figure 16: Battery Main Disconnect Switch