

# **R85 13-Foot Rotary Disc SP Windrower Headers 13-Foot R85 Line Support Kit (MD #268201) INSTALLATION INSTRUCTIONS**

The 13-Foot R85 Line Support kit (MD #268201) can be installed on 13-Foot R85 SP Windrower Headers only. The top shield covers included in this kit support the steel lines connected to the header drive pump, preventing vibration and strain on the steel lines that can lead to failure of the hydraulic system. This document explains how to install the kit.

A list of parts included in the kit is provided.

**NOTE:** Keep your MacDon publications up-to-date. The most current version of this instruction can be downloaded from our Dealer-only site (<https://portal.macdon.com>) (login required)

## **Installation Time**

Installation time for this kit is approximately 20 minutes.

## **Conventions**

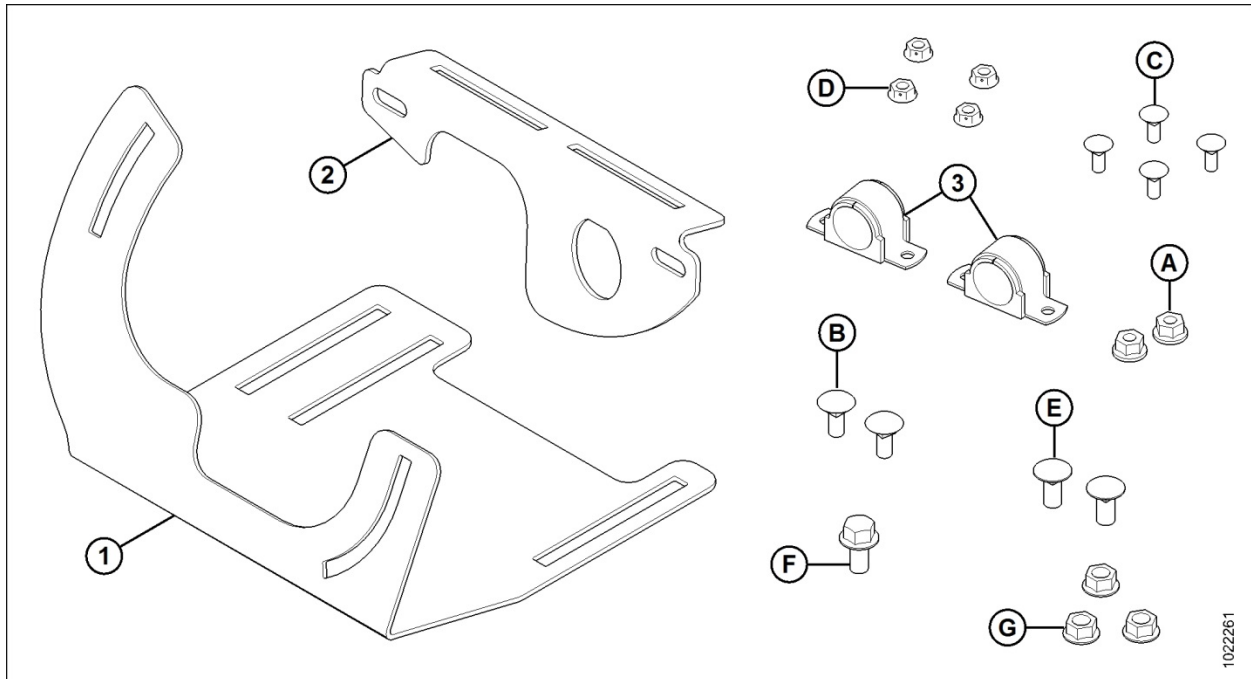
The following conventions are used in this document:

- Right and left are determined from the operator's position. The front of the header is the side that faces the crop; the back of the header is the side that connects to the combine.
- Unless otherwise noted, use the standard torque values provided in the header operator's manual and technical manual.

**R85 13-Foot Rotary Disc SP Windrower Headers  
13-Foot R85 Line Support Kit (MD #268201)  
INSTALLATION INSTRUCTIONS**

**Parts List**

This kit includes the following parts:



**Figure 1: 13-Foot R85 Line Support Kit (MD #268201)**

Ref	Part Number	Description	Quantity
1	NSS <sup>1</sup>	COVER – TOP SHIELD	1
2	NSS <sup>1</sup>	COVER – TOP SHIELD	1
3	268200	CLAMP – CUSHION	2
A	152863	NUT – HEX FLG STVR LOC M8X1.25-10-AA2L	2
B	197171	BOLT – RHSSN M8X1.25X20-8.8-A2L	2
C	30242	BOLT – RHSSN 1/4-20X.63-GR5-ZP	4
D	135248	NUT – FLG SMTH FACE 1/4-20 NC GR 5 ZP CTR LK DT THD	4
E	21863	BOLT – RHSSN 3/8 NC X 0.75 LG GR 5 ZP	2
F	21821	BOLT – HH FLG (SERR FACE) 3/8 NC X 0.75 GR 5 ZP	1
G	30228	NUT – FLANGE DT SMOOTH FACE 0.375-16UNC	3

<sup>1</sup> Not serviced separately

# R85 13-Foot Rotary Disc SP Windrower Headers 13-Foot R85 Line Support Kit (MD #268201) INSTALLATION INSTRUCTIONS

## Installation Instructions

To install the 13-Foot R85 Line Support kit (MD #268201), follow these steps:



### CAUTION

To avoid bodily injury or death from unexpected startup of machine, always stop engine and remove key from ignition before leaving operator's seat for any reason.

**IMPORTANT:** To protect the drive motor from contamination and prevent spillage of excess fluid, install caps and plugs on open fittings and hoses.

1. If header is connected to the windrower, lower header to the ground.
2. Stop engine, and remove key from ignition.
3. Ensure the windrower's battery main disconnect switch (A) is in the OFF position.

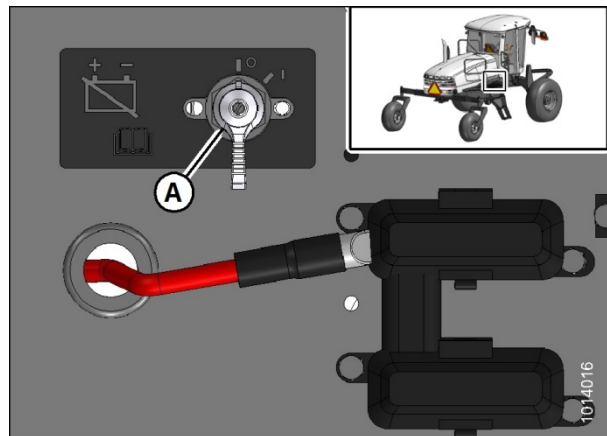


Figure 2: Battery Main Disconnect Switch

4. Disconnect windrower electrical harness (A) near the drive motor on left side of header. To disconnect, rotate outer collar of connector counterclockwise.

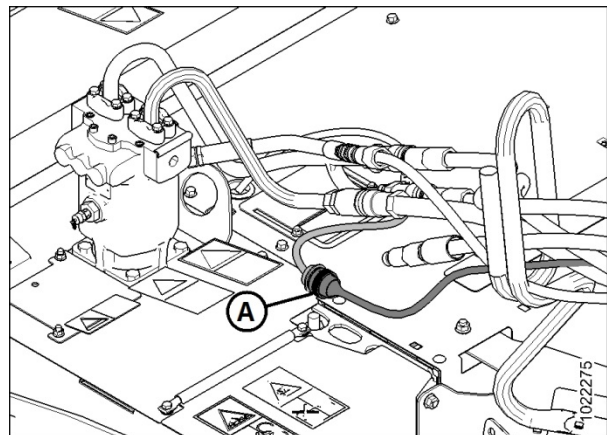
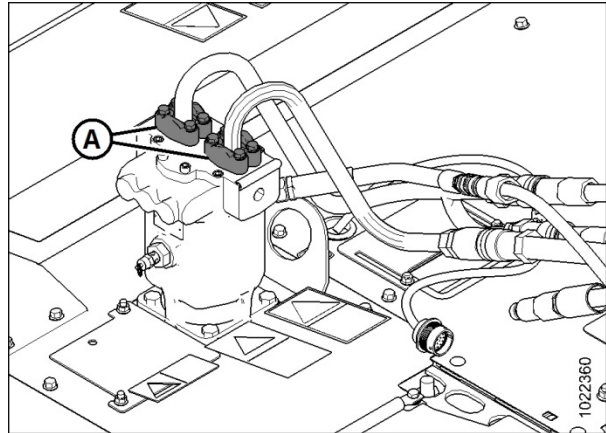


Figure 3: Disconnecting Electrical Harness

**R85 13-Foot Rotary Disc SP Windrower Headers  
13-Foot R85 Line Support Kit (MD #268201)  
INSTALLATION INSTRUCTIONS**

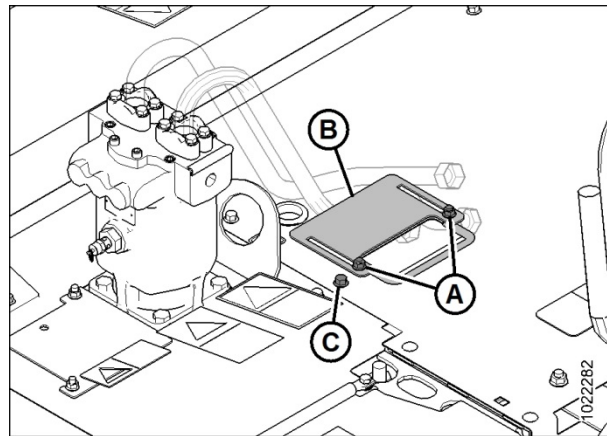
- Loosen clamps (A) that hold the steel lines at the drive motor.

**IMPORTANT:** The steel lines may bend if they aren't able to spin freely when installing top shield covers.



**Figure 4: Loosening Drive Motor Clamps**

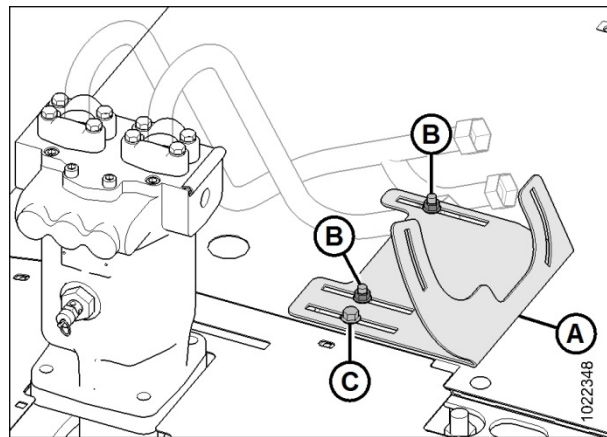
- Remove bolts (A) and top shield cover (B).
- Remove bolt (C).



**Figure 5: Removing Top Shield Cover**

**NOTE:** When installing the new top shield covers, wait until assembly is complete and lined-up with hydraulic lines properly before tightening the hardware.

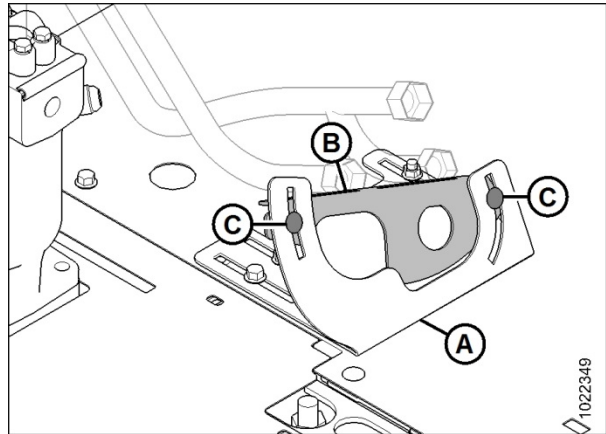
- Attach top shield cover (A) to existing holes in frame using two bolts (B) (MD #21863) and nuts (MD #30228). Bolts (B) are installed up through bottom of cover.
- Install bolt (C) (MD #21821) and nut (MD #30228) into existing hole in frame, through the outside slot of cover (A). Bolt (C) is installed down through top of cover.



**Figure 6: Installing New Top Shield Cover**

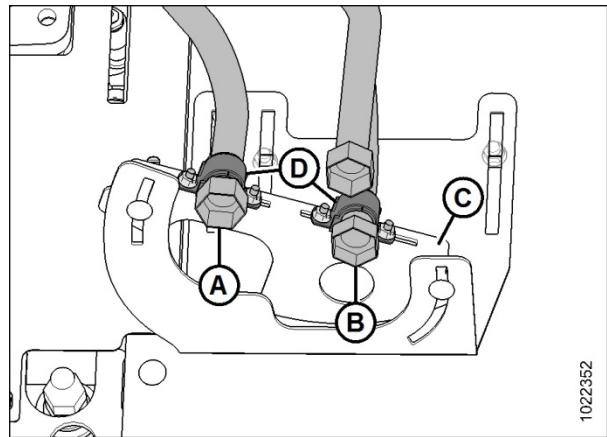
**R85 13-Foot Rotary Disc SP Windrower Headers  
13-Foot R85 Line Support Kit (MD #268201)  
INSTALLATION INSTRUCTIONS**

10. Attach top shield cover (B) to cover (A) using two bolts (C) (MD #197171) and nuts (MD #152863).



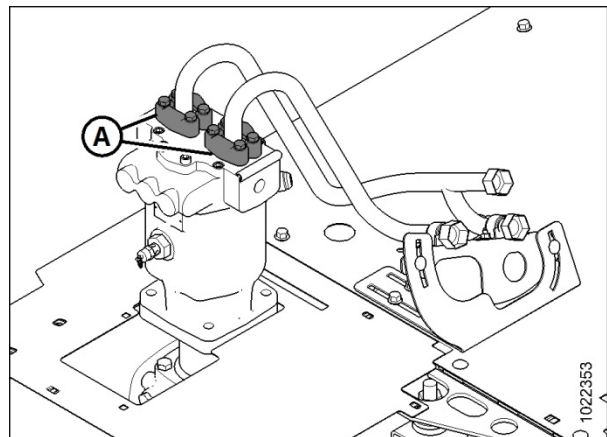
**Figure 7: Installing New Top Shield Cover**

11. Clamp steel lines (A) and (B) to cover (C) using clamps (D) (MD #268200), bolts (MD #30242), and nuts (MD #135248). Each clamp has two pieces—a bushing and steel band. Slip the bushing over the line first, then secure in place using the steel band that fits around it.



**Figure 8: Installing Clamps – Top View**

12. Tighten clamps (A) that hold the steel lines at the drive motor.
13. Tighten all new hardware.

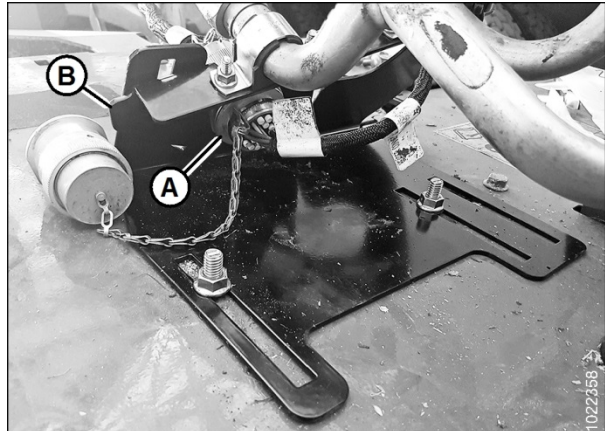


**Figure 9: Tightening Drive Motor Clamps**

**R85 13-Foot Rotary Disc SP Windrower Headers  
13-Foot R85 Line Support Kit (MD #268201)  
INSTALLATION INSTRUCTIONS**

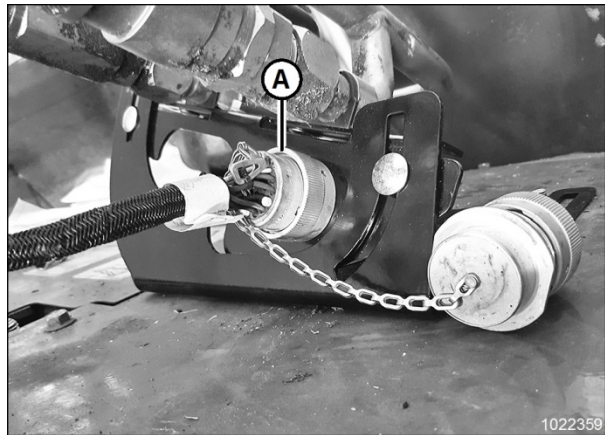
14. Place female connector (A) of electrical harness through hole in back of the cover (B).

**IMPORTANT:** To reconnect circular connectors without bending the pins, pre-align the connectors before attempting to reconnect.



**Figure 10: Connecting Windrower Harness**

15. Connect male connector (A) of windrower harness using the following procedure:
- a. Observe the channel cuts and mating channel protrusions on the inner part of the circular walls of the connectors.
  - b. Face the mating connectors to each other, and rotate connectors so that channels are aligned.
  - c. Press connectors together while turning the outer connector clockwise until collar locks.



**Figure 11: Connecting Windrower Harness**

16. Turn battery main disconnect switch back ON.