

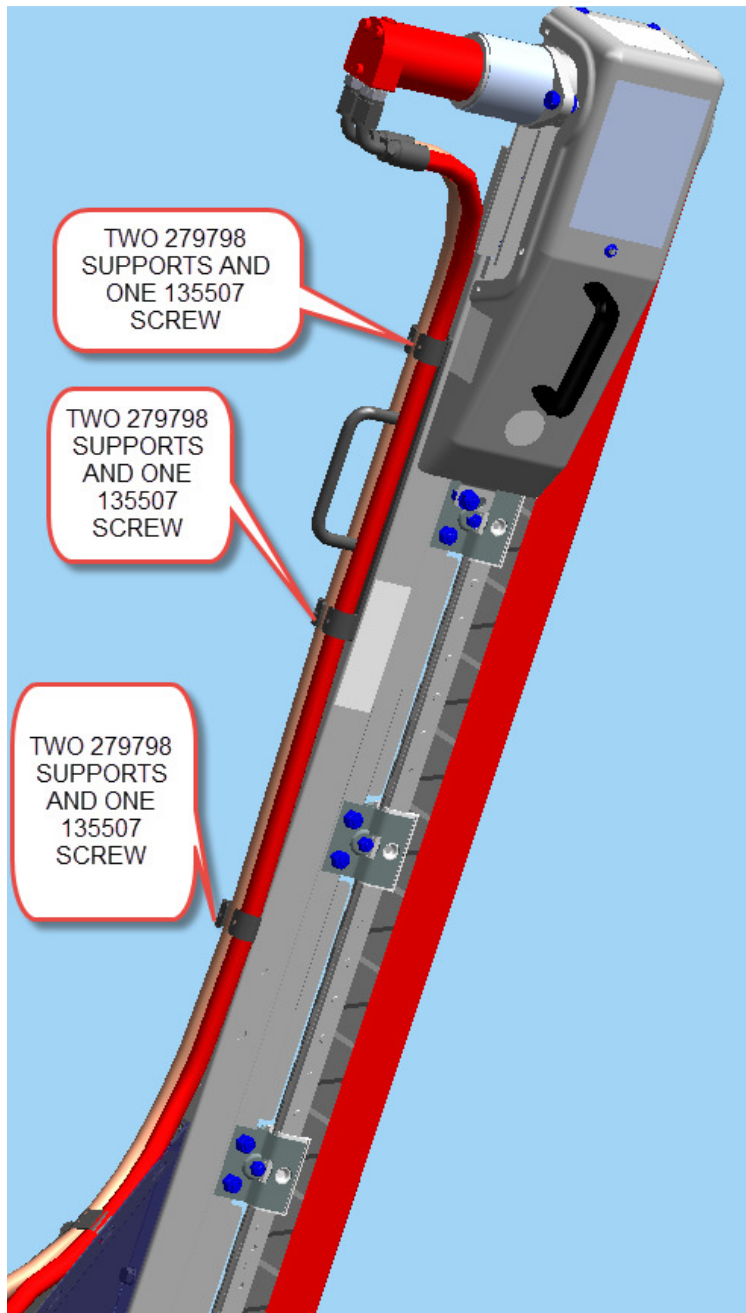
2016 EU/DRAPER SPEED REWORK KIT

BELOW IS THE LIST OF PARTS IN KIT 255935.

Part #	Description	QUANTITY
50180	BAG (FOR FOLLOWING INSTRUCTIONS)	1
214203	INSTRUCTION	1
279798	SUPPORT	12
135507	SCREW-MACHINE, TRUSS HDTORX, 38NCX1LG	6
253773	LINE-HYD	1
255796	BRACKET-RHS CAM BRKT FLANGE	1
255818	BRACKET-CTR CAM BRKT FLANGE	1
255811	BRACKET-LHS TAIL SUPPORT	1
18738	PIN-CLEVIS, 15.71 MM, 64 MM, ZN PL	3
118137	RING-EXTERNAL, 2 INCH, 0.087	3
21575	BOLT-HH1/2NCX1.0 LG GR 5 ZP	12
50186	NUT-FLANGE LOCK SM FACEDT 0.500-13UNC GR5	12
40915	WASHER-FLAT	4
276671	CONTROL PANEL, ICSDSC, CNH	1
220570	HARNESS-AUX PWR TO QUICK DISC	1
213275	VALVE DRIVER - PWM	1
213667	HARNESS - CAB DRAPER CONTROL	1
30753	FASTENER - CABLE TIE BLACK	2
16661	FASTENER - CABLE TIE BLACK	15
276964	CONTROL PANEL, ICSDSC, JD	1
287747	CTRL PANEL, ICSDSC, GENERIC	1
287859	BASE - SUCTION CUP WITH ARM	1
287894	HARNESS - VALVE DRIVER	1
50180	BAG (FOR FOLLOWING INSTRUCTIONS)	1
147989	INSTRUCTION	1

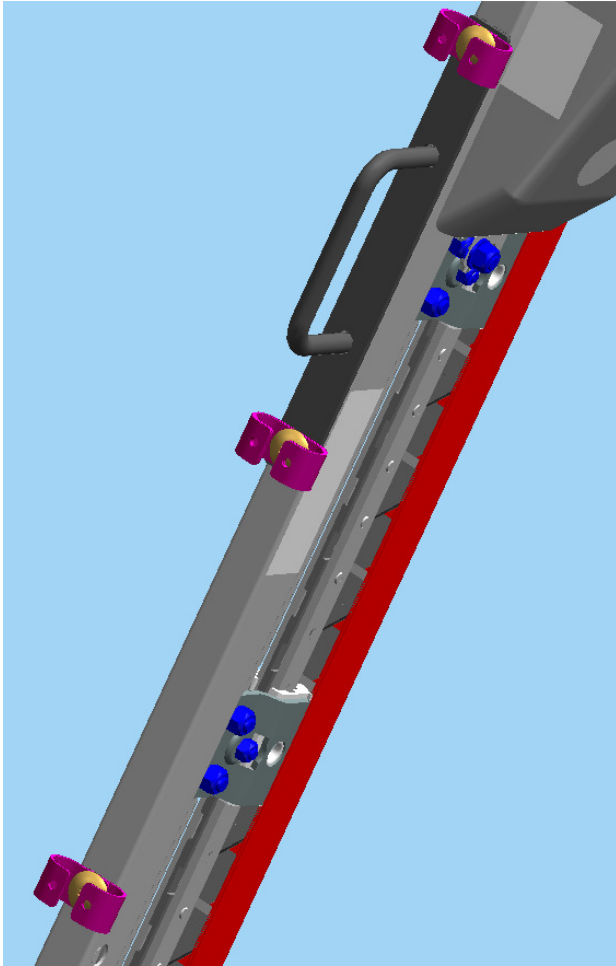
2016 EU/DRAPER SPEED REWORK KIT

- 1) REMOVE THE CURRENT HOSE CLAMPS SECURING RIGHT VERTICAL KNIFE MOTOR HOSES WITH 279798 SUPPORTS AND 135507 SCREWS. REMOVE ONE OLD HOSE CLAMP AND SECURE WITH NEW 279798 SUPPORTS. DO ONE AT A TIME. THIS WILL KEEP BAR WELDMENT INSIDE ZIEGLER KNIFE TUBE IN PROPER POSITION. SEE BELOW NOTES AND IMAGES TO SHOW ASSEMBLY OF TWO 279798 SUPPORTS WITH 135507 SCREW PROVIDING THE NEW HOSE CLAMPS. NOTE THAT TOP TWO HOSE CLAMPS ARE ALSO SECURING HANDLE WELDMENT.
- 2) PROCEED WITH 2ND HOSE CLAMP. THEN THIRD HOSE CLAMP.
- 3) REPEAT ABOVE FOR LEFT VERTICAL KNIFE.

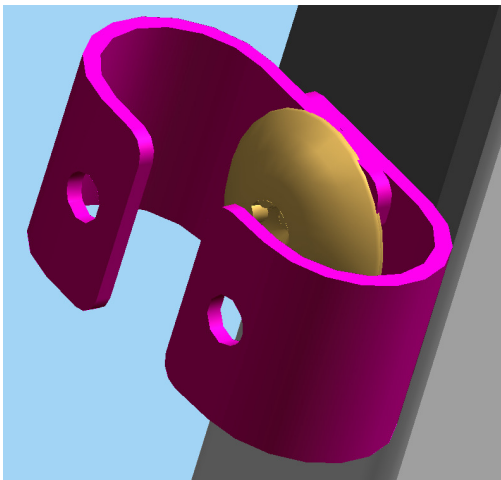


2016 EU/DRAPER SPEED REWORK KIT

BELOW IMAGE IS HIDING THE MOTOR HOSES TO BETTER SHOW THE NEW SUPPORTS AND SCREWS



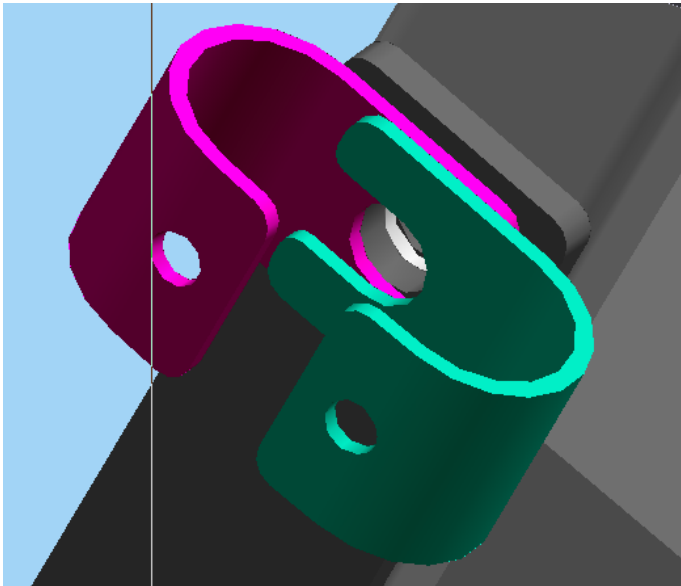
BELOW IMAGE SHOWS TWO SUPPORTS AND ONE SCREW AS THEY WOULD LOOK FULLY ASSEMBLED ON BACK OF ZIEGLER VERTICAL KNIFE – NOTE: HOSES NOT SHOWN



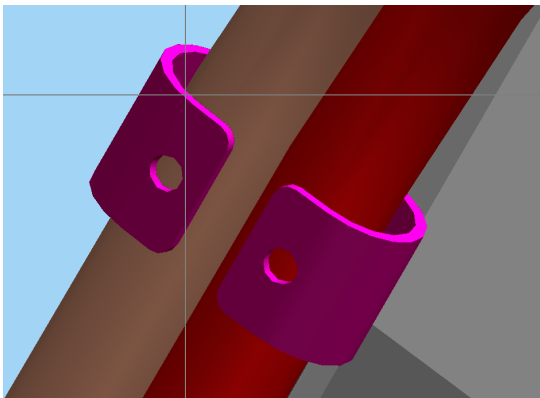
2016 EU/DRAPER SPEED REWORK KIT

START BY STARTING THE SCREW THROUGH BACK OF ZIEGLER KNIFE. LEAVE SCREW LOOSE TO ALLOW SUPPORTS TO BE POSITIONED. NOTE THAT SUPPORT CUTOUTS ARE SLOTTED OUT TO END TO ALLOW SUPPORTS TO BE SLID ONTO NON TIGHTENED SCREW. PULL SUPPORTS TOWARD EACH OTHER AS MUCH AS POSSIBLE (WITH T45 TORX BETWEEN THE TWO HOSES) TO GET THE TWO HOSES PULLED TOGETHER AS MUCH AS POSSIBLE. THEN TIGHTEN SCREW WITH T45 TORX WRENCH.

BELOW IMAGE SHOWS TWO SUPPORTS – SCREW NOT SHOWN

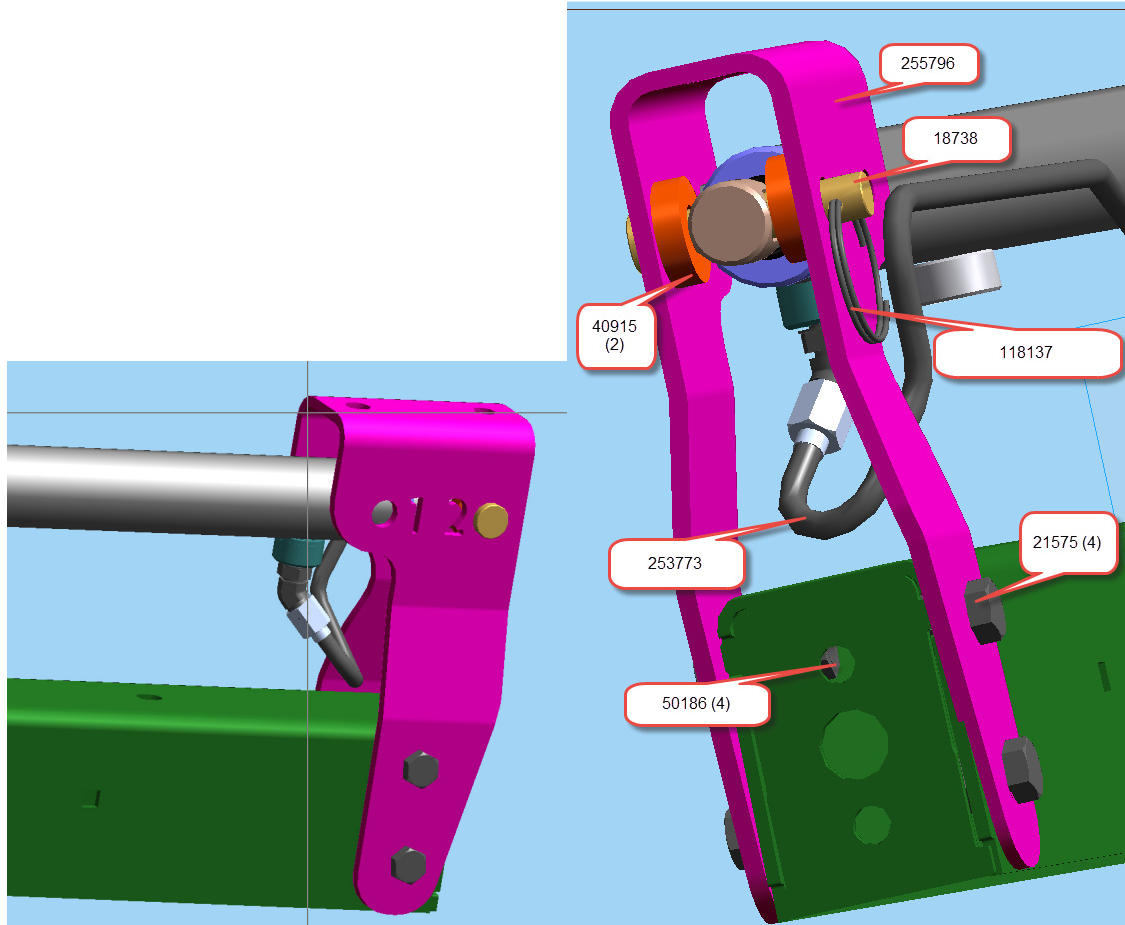


BELOW IMAGE SHOWS FULLY ASSEMBLED HOSE CLAMPS

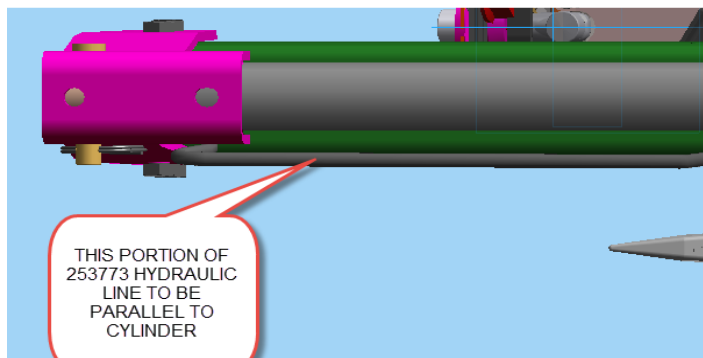


2016 EU/DRAPER SPEED REWORK KIT

- 4) ON RIGHT REEL SUPPORT ARM PERFORM THE FOLLOWING. REPLACE HYDRAULIC LINE 123618 WITH 253773 HYDRAULIC LINE SUPPLIED IN KIT. REPLACE THE EXISTING FORE-AFT ANCHOR WITH 255796 BRACKET, CLEVIS PIN 18738, EXTERNAL RING 118137 AND WASHER 40915 (2). TO ALLOW REEL TO EXTEND MAXIMUM FORWARD, INSTALL FORE-AFT CYLINDER TO ANCHOR IN THE NUMBER 2 HOLE IN ANCHOR AS SHOWN BELOW.

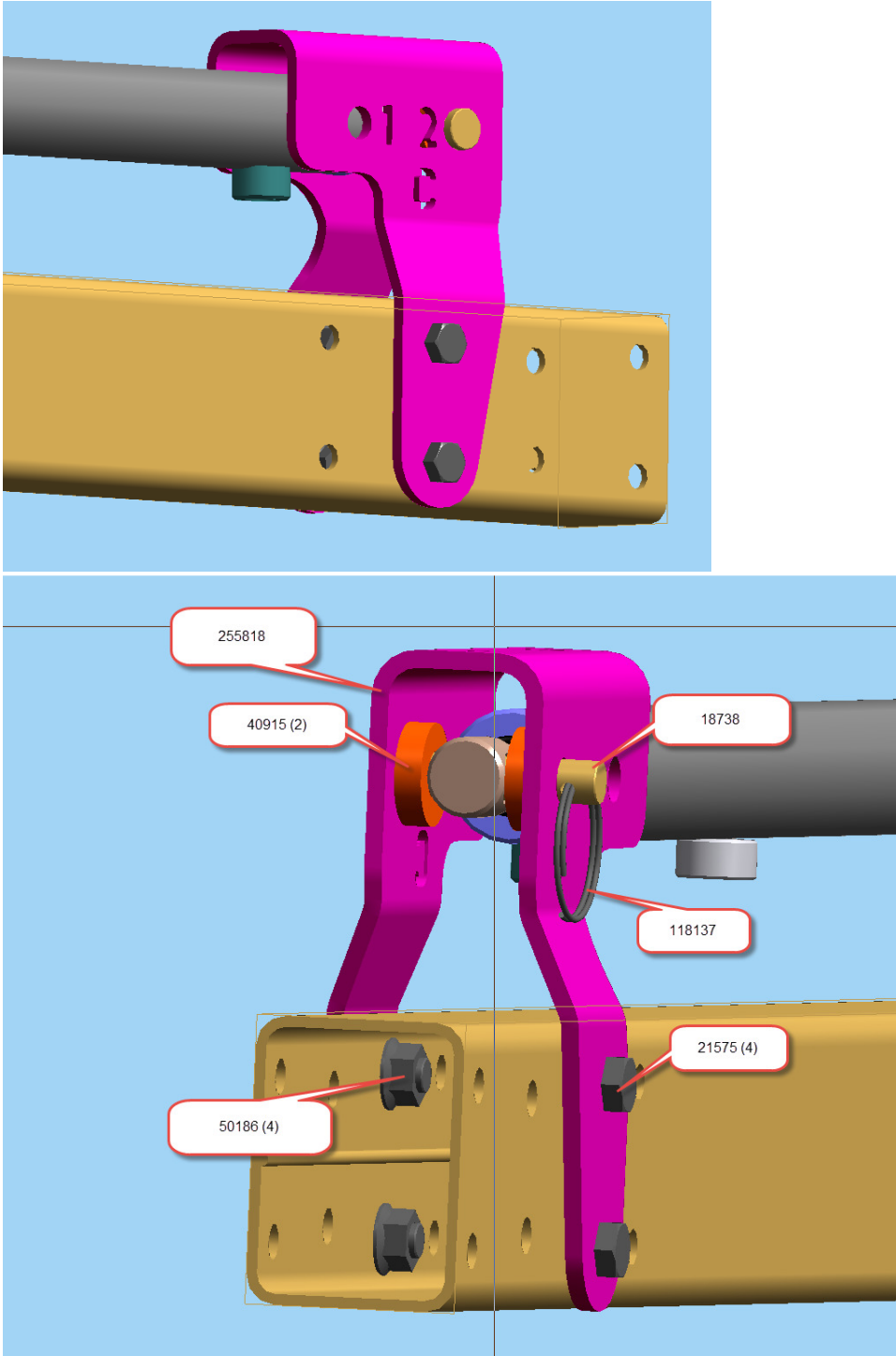


ENSURE HYDRAULIC LINE 253773 IS INSTALLED AS SHOWN BELOW (THIS IS VIEW FROM TOP LOOKING DOWN) TO ENSURE CLEARANCE TO REEL DRIVE/CAM AND BRACKET 255796.



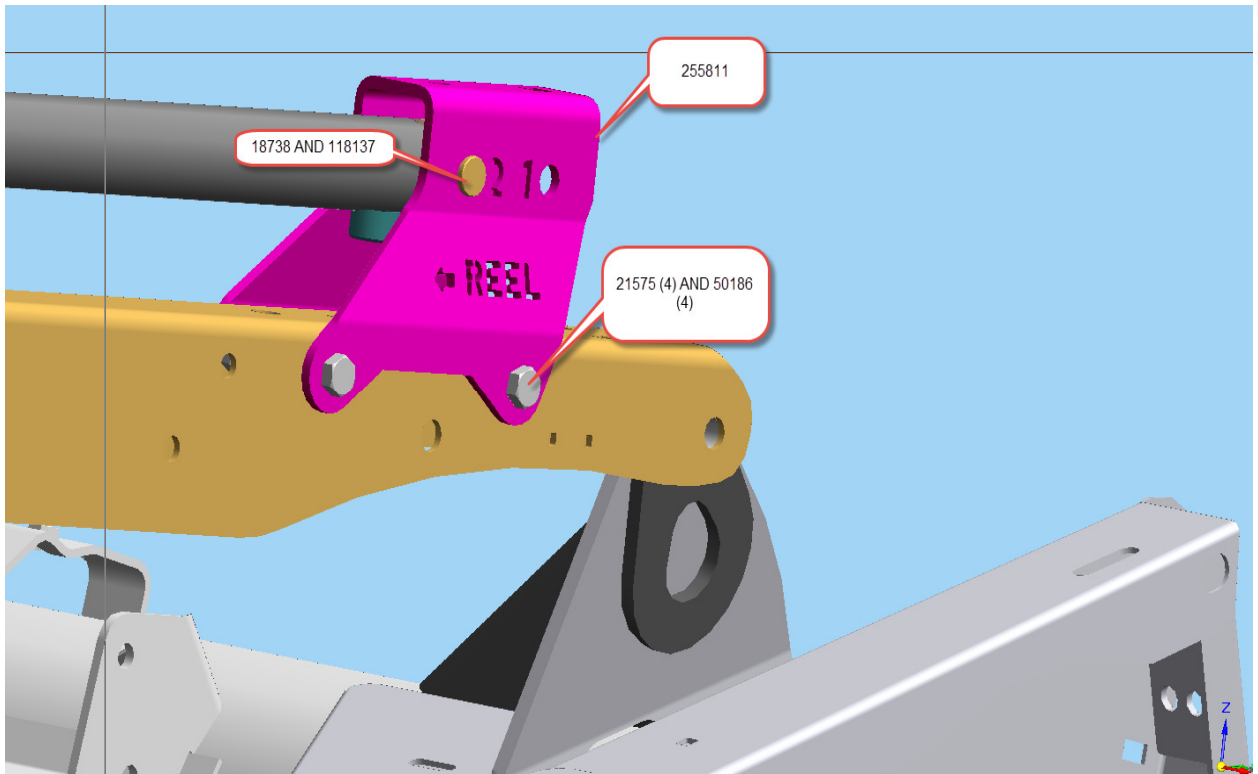
2016 EU/DRAPER SPEED REWORK KIT

- 5) ON CENTER REEL SUPPORT ARM, REPLACE EXISTING REEL FORE-AFT ANCHOR WITH 255818 ANCHOR SUPPLIED IN KIT. ASSEMBLE ANCHOR IN THE THIRD SET OF HOLES FROM FRONT OF REEL SUPPORT ARM AS SHOWN BELOW. ASSEMBLE FORE-AFT CYLINDER IN THE NUMBER TWO HOLE IN ANCHOR AS SHOWN BELOW. ATTACH CYLINDER TO ANCHOR WITH 18738 CLEVIS PIN, 118137 EXTERNAL RING, 40915 WASHERS (2), 21575 BOLTS (4) AND 50186 NUTS (4).



2016 EU/DRAPER SPEED REWORK KIT

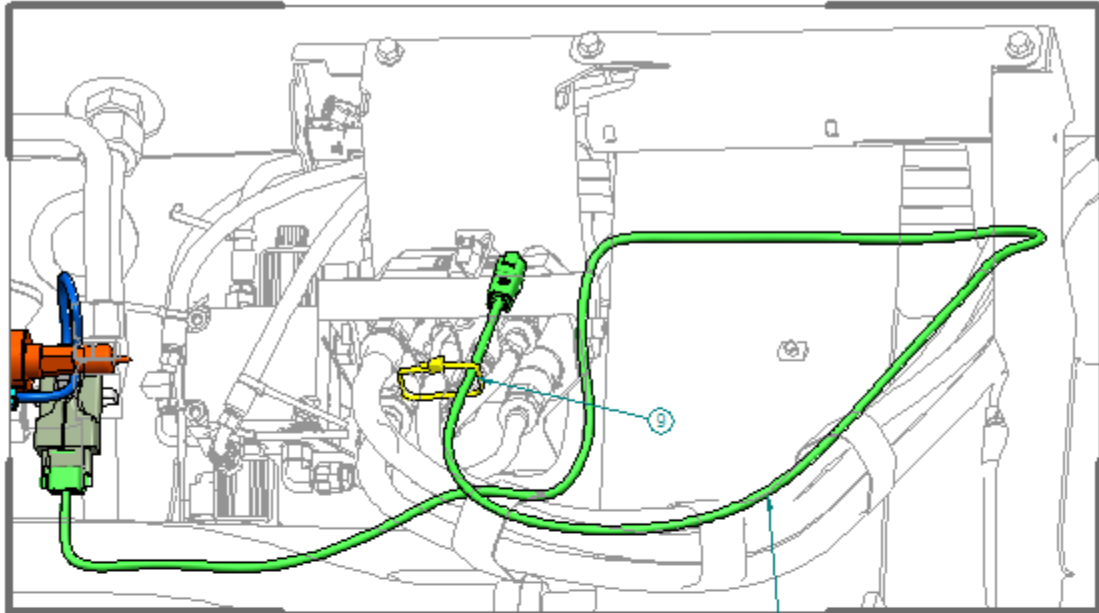
- 6) ON LEFT REEL SUPPORT ARM, REPLACE EXISTING REEL FORE-AFT ANCHOR WITH 255811 ANCHOR SUPPLIED IN KIT. ASSEMBLE ANCHOR TO REEL SUPPORT ARM AS SHOWN BELOW, USING 21575 BOLTS (4) AND 50186 NUTS (4). ASSEMBLE REEL FORE-AFT CYLINDER TO ANCHOR IN NUMBER 2 HOLE POSITION, USING CLEVIS PIN 18738 AND EXTERNAL RING 118137.



- 7) FOR CAB DRAPER SPEED CONTROL WE'VE SUPPLIED IN KIT PARTS TO ALLOW FOR ASSEMBLY OF THE JOHN DEERE ASSEMBLY, THE CNH ASSEMBLY AND GENERIC ASSEMBLY (FOR OTHER COMBINE BRANDS). FOR CAB HARNESS ROUTING AND CONTROL PANEL INSTALLATION, SEE 147989 INSTRUCTIONS SUPPLIED IN KIT.

2016 EU/DRAPER SPEED REWORK KIT

- 8) FOR JOHN DEERE FM100, PLEASE ASSEMBLE DRAPER SPEED CONTROL PER THE FOLLOWING INSTRUCTIONS.

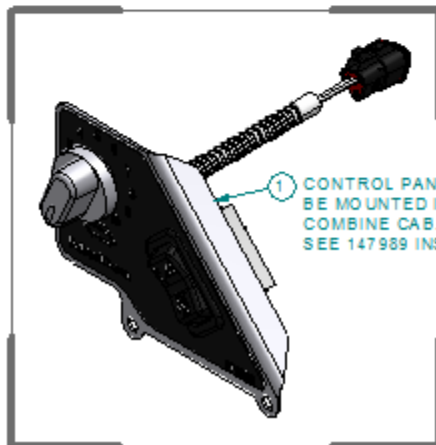


BACK VIEW

7
ROUTE HARNESS WITH COMPLETION PACKAGE HARNESS TO EXISTING ELECTRICAL CONNECTION. USE CABLE TIES TO SECURE.



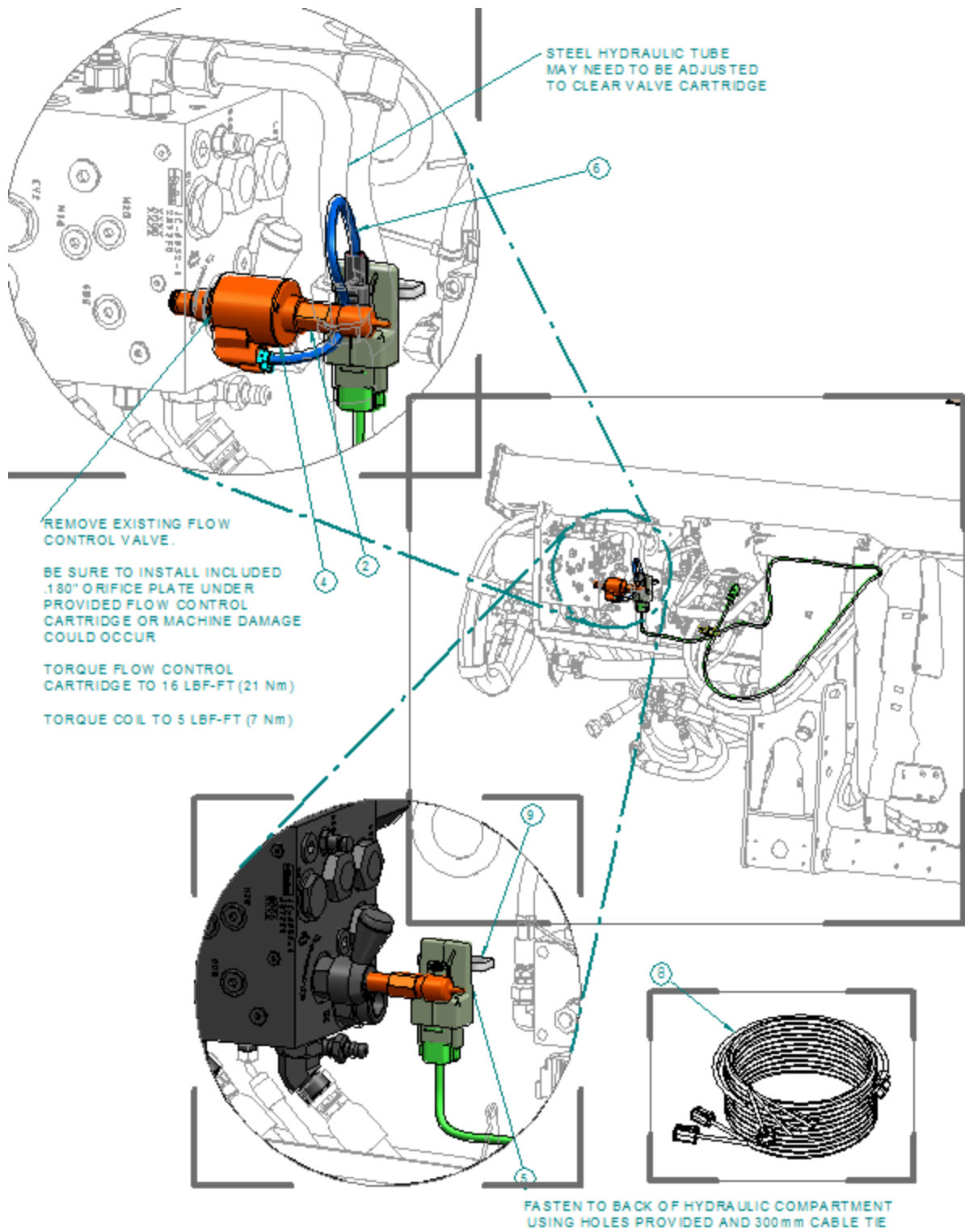
FRONT VIEW



1
CONTROL PANEL TO BE MOUNTED IN COMBINE CAB. SEE 147989 INSTRUCTIONS.

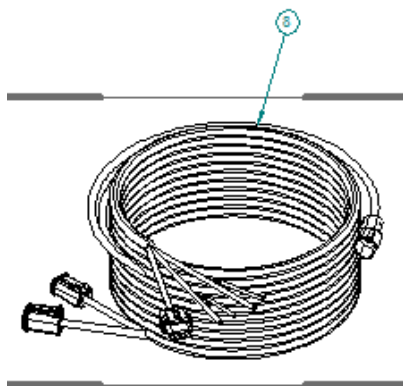
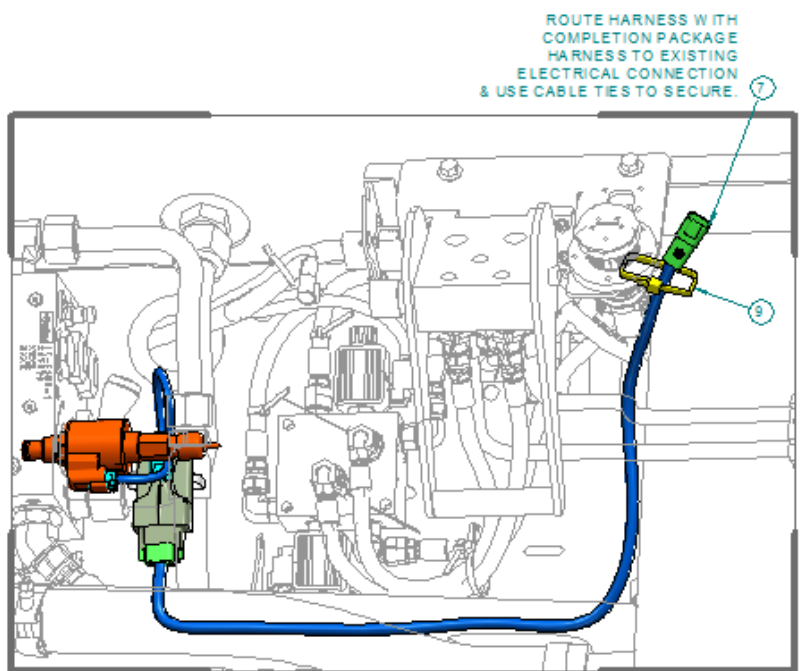
13	030804	BAG-PLASTIC	1
12	147989	INSTRUCTION - CAB DRAPER CTRL	1
11	016661	FASTENER - CABLE TIE BLACK	15
10	030753	FASTENER - CABLE TIE BLACK	2
9	220570	HARNESS-AUX PWR TO QUICK DISC	1
8	213667	HARNESS - CAB DRAPER CONTROL	1
7	287894	HARNESS - VALVE DRIVER	1
6	213812	HARNESS - SOLENOID	1
5	213275	VALVE DRIVER - PWM	1
4	209045	COIL-SOLENOID	1
3	287227	ORIFICE PLATE - 0.18	1
2	295267	VALVE - FLOW CONTROL	1
1	276964	CONTROL PANEL, ICSDS C, JD	1
#	PART #	TITLE	QTY

2016 EU/DRAPER SPEED REWORK KIT



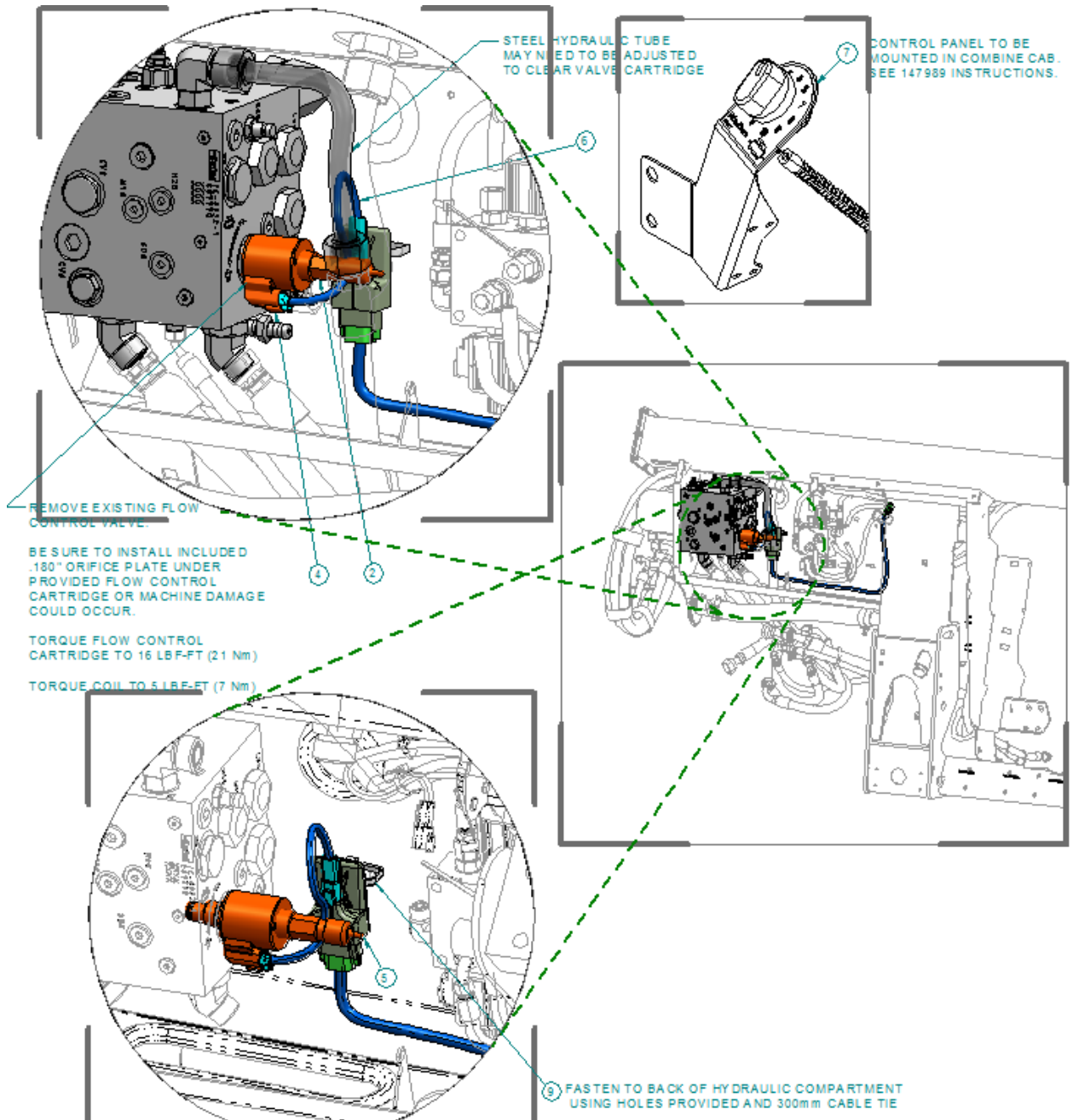
2016 EU/DRAPER SPEED REWORK KIT

- 9) FOR CNH FM100, PLEASE ASSEMBLE DRAPER SPEED CONTROL PER THE FOLLOWING INSTRUCTIONS.



13	030804	BAG-PLASTIC	1
12	147989	INSTRUCTION - CAB DRAPER CTRL	1
11	016661	FASTENER - CABLE TIE BLACK	15
10	030753	FASTENER - CABLE TIE BLACK	2
9	220570	HARNESS-AUX PW R TO QUICK DISC	1
8	213667	HARNESS - CAB DRAPER CONTROL	1
7	213813	HARNESS - VALVE DRIVER	1
6	213812	HARNESS - SOLENOID	1
5	213275	VALVE DRIVER - PWM	1
4	209045	COIL-SOLENOID	1
3	287227	ORIFICE PLATE - 0.18	1
2	295267	VALVE - FLOW CONTROL	1
1	276671	CONTROL PANEL, ICSDSC, CNH	1
#	PART #	TITLE	QTY

2016 EU/DRAPER SPEED REWORK KIT



2016 EU/DRAPER SPEED REWORK KIT

10) FOR FM100 THAT ARE NOT JOHN DEERE OR CNH, PLEASE ASSEMBLE TO THE FOLLOWING INSTRUCTIONS.

ROUTE HARNESS WITH COMPLETION PACKAGE HARNESS TO EXISTING ELECTRICAL CONNECTION. BUNDLE EXCESS HARNESS & USE CABLE TIES TO SECURE.

CNH COMPLETION SHOW N. ROUTING WILL DIFFER WITH COMBINE BRAND.

14	030804	BAG-PLASTIC	1
13	147989	INSTRUCTION - CAB DRAPER CTRL	1
12	016661	FASTENER - CABLE TIE BLACK	15
11	030753	FASTENER - CABLE TIE BLACK	2
10	220570	HARNES-AUX PWR TO QUICK DISC	1
9	213667	HARNES - CAB DRAPER CONTROL	1
8	287894	HARNES - VALVE DRIVER	1
7	213812	HARNES - SOLENOID	1
6	213275	VALVE DRIVER - PWM	1
5	209045	COIL-SOLENOID	1
4	287227	ORIFICE PLATE - 0.18	1
3	295267	VALVE - FLOW CONTROL	1
2	287859	BASE - SUCTION CUP WITH ARM	1
1	287747	CTRL PANEL ICSDSC, GENERIC	1
#	PART #	TITLE	QTY

2016 EU/DRAPER SPEED REWORK KIT

