

M1-Series Self-Propelled Windrowers
TRIMBLE® NAV II RELAY KIT (MD #209585)
INSTALLATION INSTRUCTIONS

The Trimble® Nav II Relay kit (MD #209585) can be installed on M1-Series Self-Propelled Windrowers. This kit is required for use with the MacDon Trimble® Autopilot™ Ready kit (MD #B5995) if the windrower is equipped with a Nav II controller. This kit is **NOT** required if the windrower is equipped with a Nav III controller. A list of parts included in the kit is provided.

NOTE: This instruction is available only in English.

Installation Time

Installation time for this kit is approximately 15 minutes.

Conventions

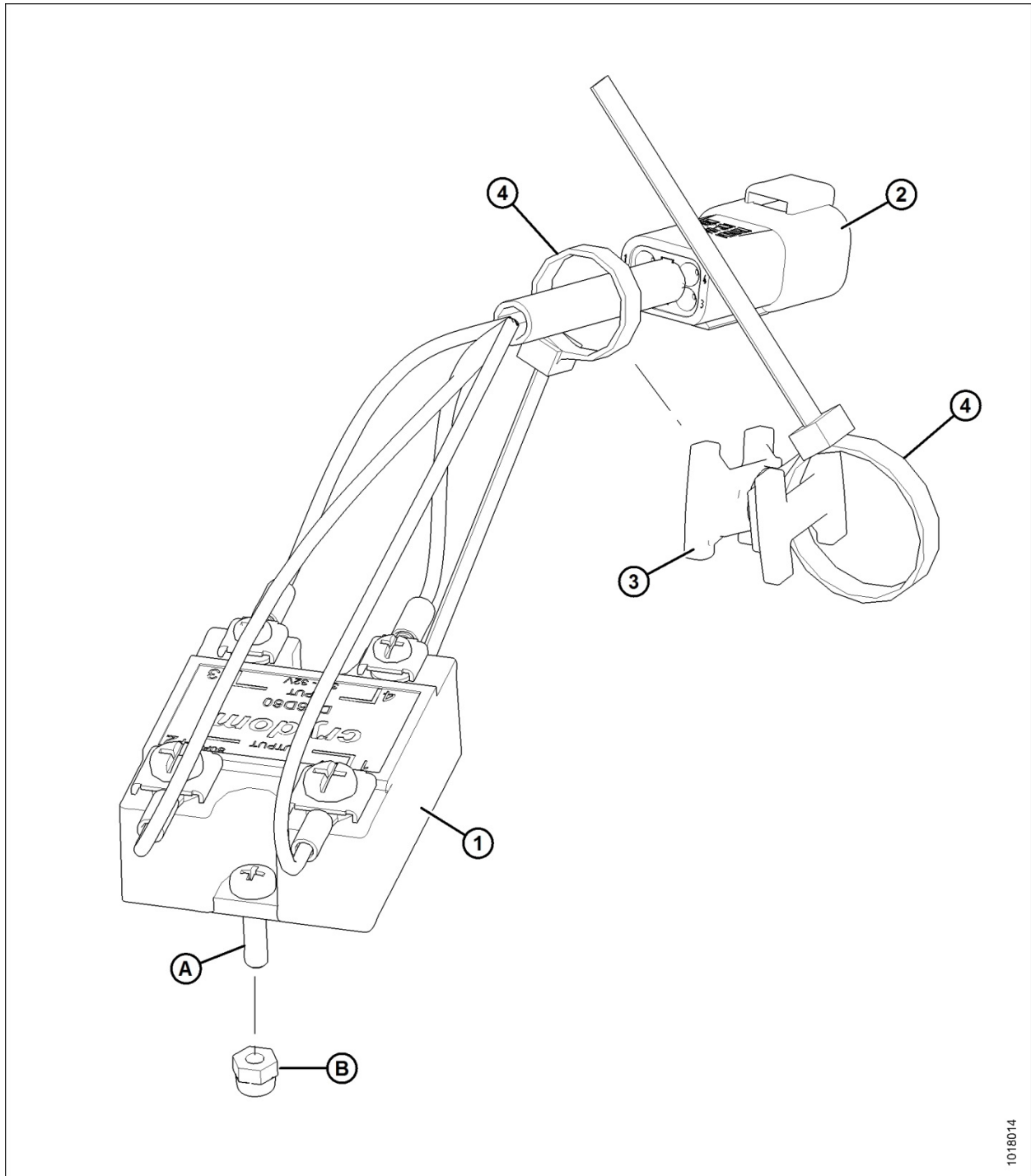
The following conventions are followed in this document:

- Right and left are determined from the operator's position, facing forward with the windrower in cab-forward position.
- Unless otherwise noted, use the standard torque values provided in the windrower operator's manual and technical manual.

M1-Series Self-Propelled Windrowers TRIMBLE® NAV II RELAY KIT (MD #209585) INSTALLATION INSTRUCTIONS

Part List

This kit includes the following parts:



1018014

**M1-Series Self-Propelled Windrowers
 TRIMBLE® NAV II RELAY KIT (MD #209585)
 INSTALLATION INSTRUCTIONS**

Ref	Part Number	Description	Quantity
1	134670	RELAY – SOLID STATE, 60 AMPS	1
2	207948	HARNESS – RELAY, NAV2 CONTROL	1
3	134442	SPACER – DUAL SWIVEL SADDLE	1
4	21763	FASTENER – CABLE TIE, BLACK	2
A	136313	SCREW – PAN HD ISO 7045 M4 X 0.7 X 16-4.8-A2L	2
B	197320	NUT – HEX NYLOC M4 X 0.7-8-A2L	2

M1-Series Self-Propelled Windrowers

TRIMBLE® NAV II RELAY KIT (MD #209585)

INSTALLATION INSTRUCTIONS

Installation Instructions

To install the Trimble® Nav II Relay kit, follow these steps:

1. Apply di-electric grease to the four ring terminals (A) on the Nav II controller relay harness (MD #207948). Harness is provided in kit.

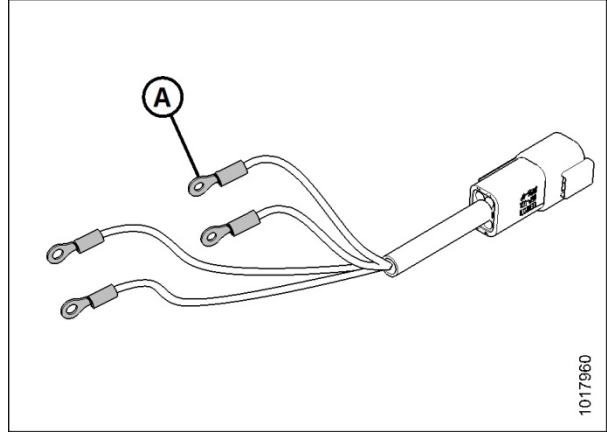


Figure 1: Nav II Controller Relay Harness (MD #207948)

2. Attach the ring terminals to the terminal slots on the relay (MD #134670) as follows:

NOTE: Install ring terminals so that all four terminals point in direction shown in Figure 1.

Ring Terminal	Terminal Slot on Relay	
T313	Output	1
T312		+2
T310	Input	+3
T311		4

Relay is provided in kit.

3. Torque the output terminals to 1.5–1.7 N·m (13–15 lbf·in).
4. Torque the input terminals to 2.0–2.2 N·m (18–19 lbf·in).

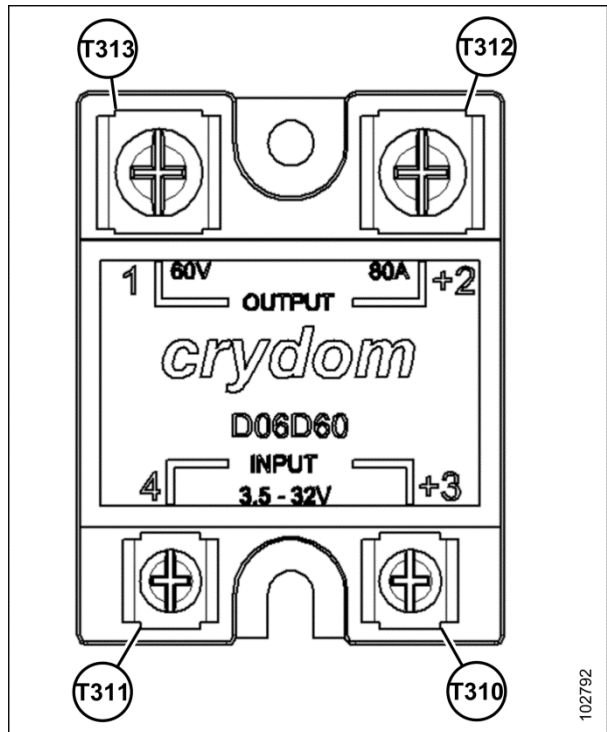


Figure 2: Relay Terminal Connections

M1-Series Self-Propelled Windrowers TRIMBLE® NAV II RELAY KIT (MD #209585) INSTALLATION INSTRUCTIONS

5. Attach dual swivel saddle spacer (A) (MD #134442) to the relay harness (B) with a black cable tie (C) (MD #21763). Spacer and cable tie are provided in kit.

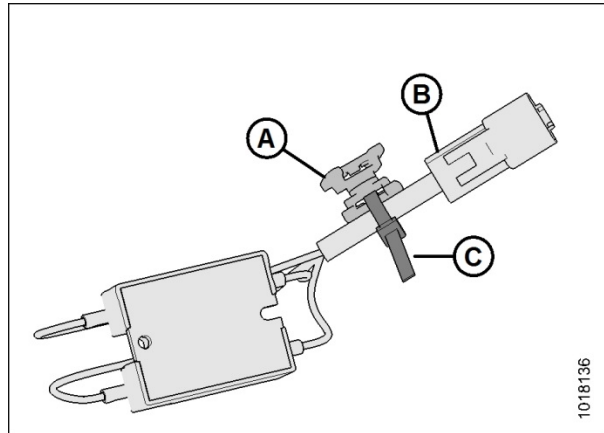


Figure 3: Spacer Attached to Relay Harness

6. Locate steering manifold (A) and mounting plate (B) under front left of cab.

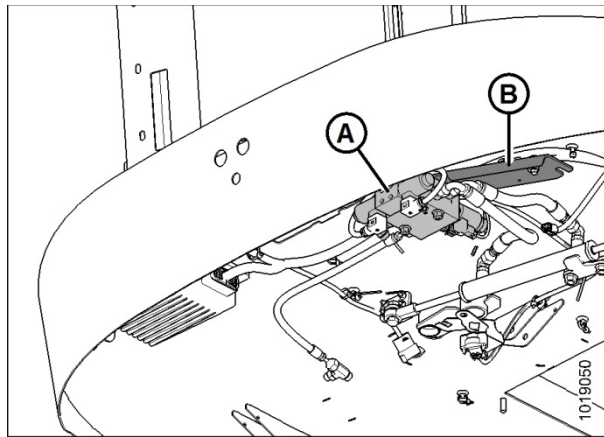


Figure 4: Steering Manifold and Mounting Plate

7. Line up relay (A) with holes in mounting plate (B).
8. Secure relay (A) to mounting plate (B) using two M4 pan head screws (C) (MD #136313) and nuts (MD #197320). Screws and nuts are provided in kit.

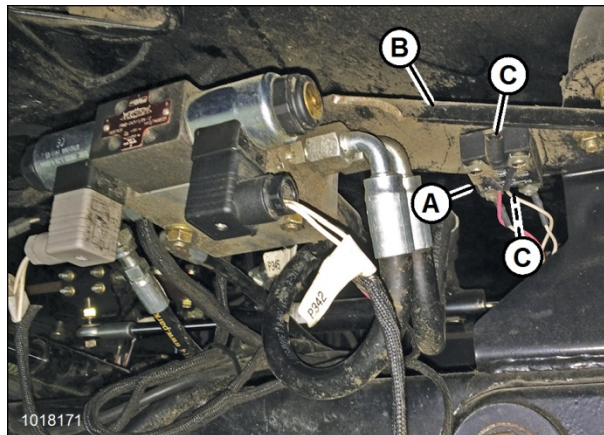


Figure 5: Relay Installed

M1-Series Self-Propelled Windrowers
TRIMBLE® NAV II RELAY KIT (MD #209585)
INSTALLATION INSTRUCTIONS

9. On the bottom of the cab, locate the C17 branch (A) of the autosteer harness. Cut the cable tie securing the C17 branch to the main harness, and remove the connector cap.
10. Connect relay harness (B) (connector C17B) to autosteer harness (A) (connector C17A).
11. Tie relay harness to steering valve hydraulic hose (C) using spacer (D) and a cable tie (E) (MD #21763). Cable tie is provided in kit.

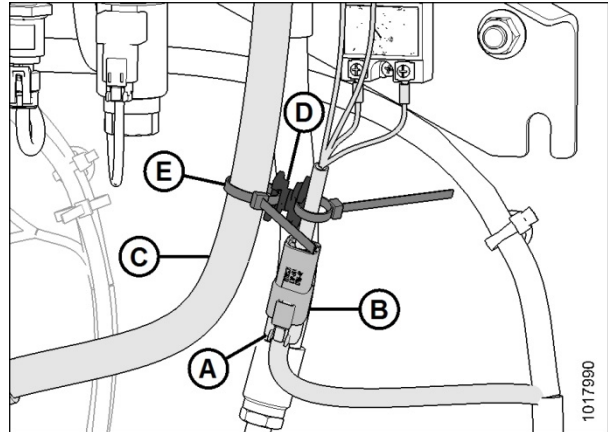


Figure 6: Relay Harness Connection (View from under Cab)