

# M Series Self-Propelled Windrower WINDROWER CONTROL MODULE (WCM) SERVICE KIT (MD #183910) INSTALLATION INSTRUCTIONS

The Windrower Control Module (WCM) Service kit (MD #183910) is intended to replace a faulty WCM. This document explains how to install the kit on M Series Windrowers.

A list of parts included in the kit is provided.

**NOTE:** Keep your MacDon publications up-to-date. The most current version of this instruction can be downloaded from our Dealer-only site (<https://portal.macdon.com>) (login required).

**NOTE:** This document is currently available in English only.

## Installation Time

Installation time for this kit is approximately 1/2 hour.

## Conventions

The following conventions are used in this document:

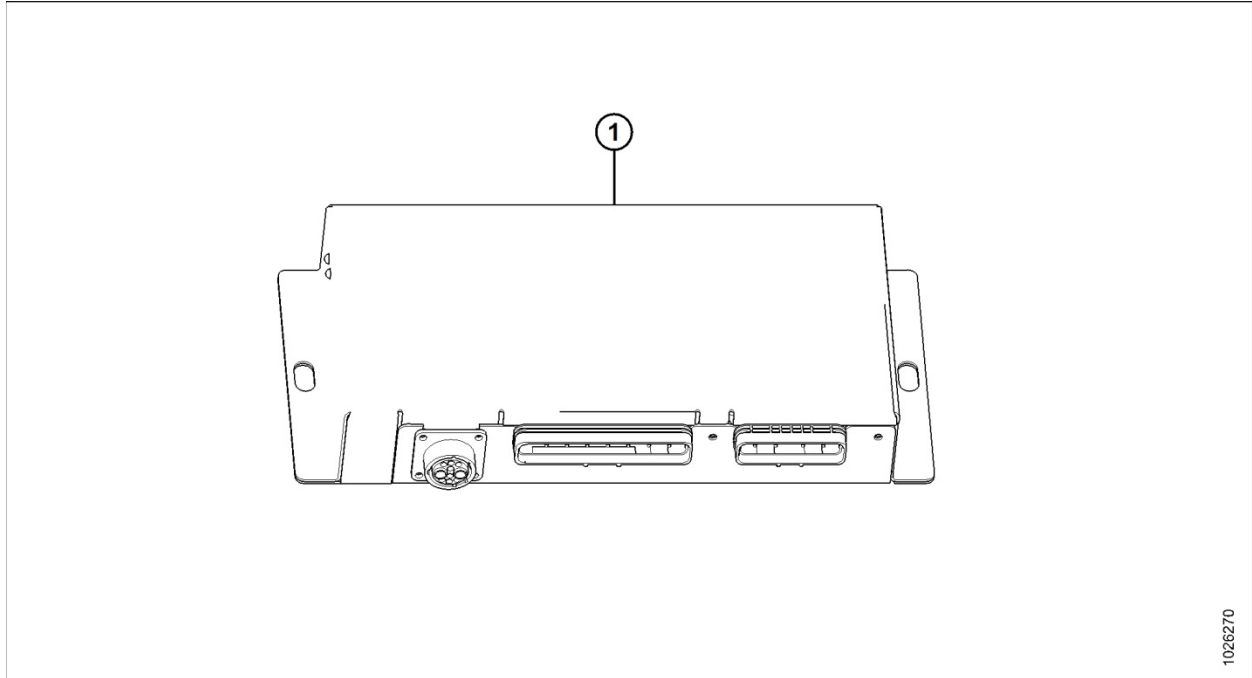
- Right and left are determined from the operator's position, facing forward with the windrower in cab-forward position.
- Unless otherwise noted, use the standard torque values provided in the windrower operator's manual and technical manual.

## Table of Contents

Parts List .....	2
Installation Instructions.....	3
Removing Existing Windrower Control Module (WCM).....	3
Installing Windrower Control Module (WCM) .....	5
Checking and Programming Software .....	7

**M Series Self-Propelled Windrower  
WINDROWER CONTROL MODULE (WCM) SERVICE KIT (MD #183910)  
INSTALLATION INSTRUCTIONS**

**Parts List**



<b>Ref</b>	<b>Part Number</b>	<b>Description</b>	<b>Qty</b>
1	183917	MODULE – WINDROWER WCM 2.1	1

# M Series Self-Propelled Windrower WINDROWER CONTROL MODULE (WCM) SERVICE KIT (MD #183910) INSTALLATION INSTRUCTIONS

## Installation Instructions

To install the Windrower Control Module (WCM) Service kit, follow these steps:



### DANGER

To avoid bodily injury or death from unexpected startup of the machine, always stop the engine and remove the key from the ignition before leaving the operator's seat for any reason.

1. Stop the engine and remove the key.
2. Open the right platform. For instructions, refer to the windrower operator's manual or technical manual.
3. Turn the battery main disconnect switch (A) to the POWER OFF position.

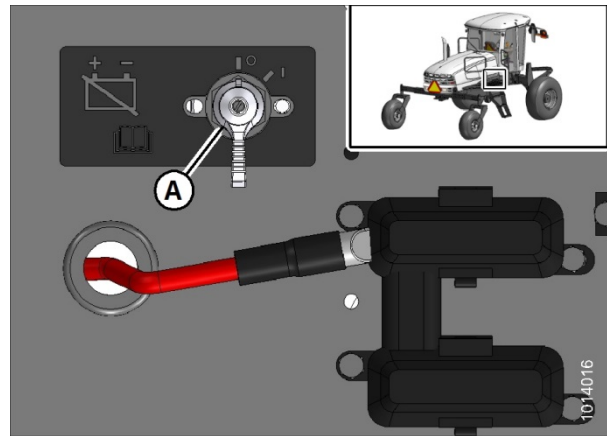


Figure 1: Battery Main Disconnect Switch

## Removing Existing Windrower Control Module (WCM)

1. Locate the manual holder (A) beneath the trainer's seat. Just above the manual holder is the WCM (B).



Figure 2: Manual Holder and WCM

## M Series Self-Propelled Windrower WINDROWER CONTROL MODULE (WCM) SERVICE KIT (MD #183910) INSTALLATION INSTRUCTIONS

2. Gently move the upholstery (C) on both sides of the manual holder to provide access to the nuts that secure it and the WCM to the frame.
3. Approximately halfway down on both sides of the manual holder, there are two nuts (A) securing it to the frame. Remove the two nuts (A).
4. Remove the manual holder.
5. Approximately halfway down on both sides of the WCM, there are two nuts (B) securing it to the frame. Remove the two nuts.

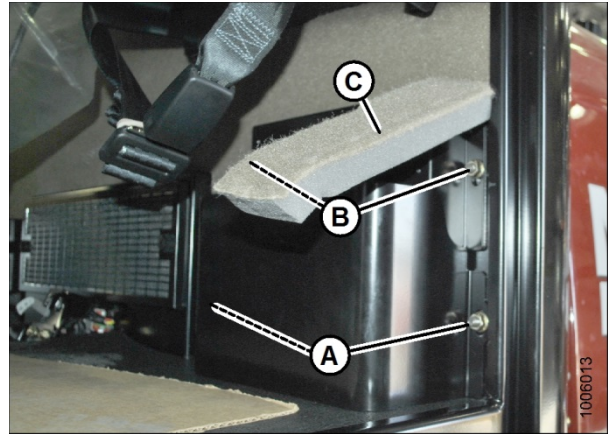


Figure 3: Upholstery and Hardware

6. Disconnect three harnesses (A), (B), and (C) connecting the WCM to the windrower.

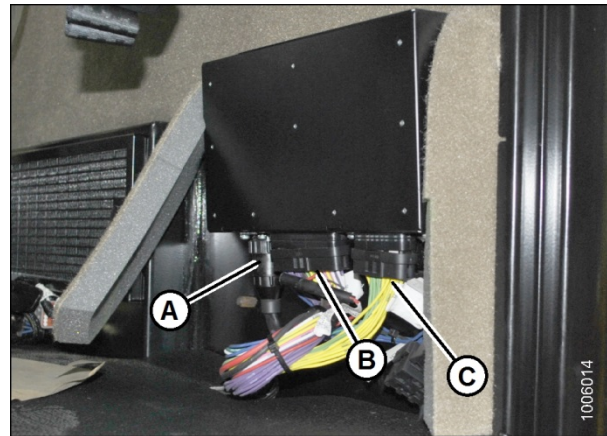


Figure 4: WCM Connected to Wiring Harness

7. Remove WCM (A).

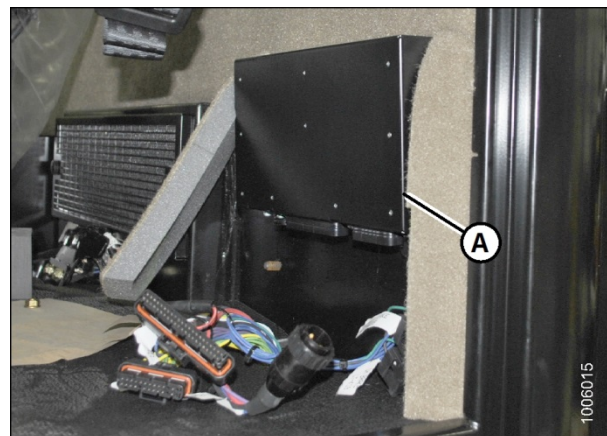


Figure 5: WCM with Wiring Harness Disconnected

# M Series Self-Propelled Windrower WINDROWER CONTROL MODULE (WCM) SERVICE KIT (MD #183910) INSTALLATION INSTRUCTIONS

## Installing Windrower Control Module (WCM)

1. Position WCM (A) (MD #183917) against back wall of cab as shown at right.

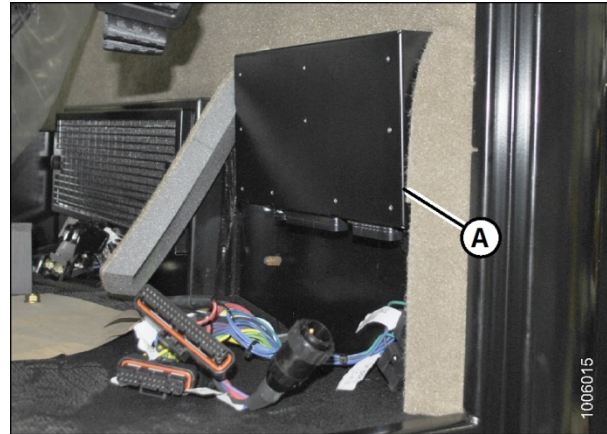


Figure 6: WCM Positioned in Cab

2. Connect the three harnesses (A), (B), and (C) to the WCM.

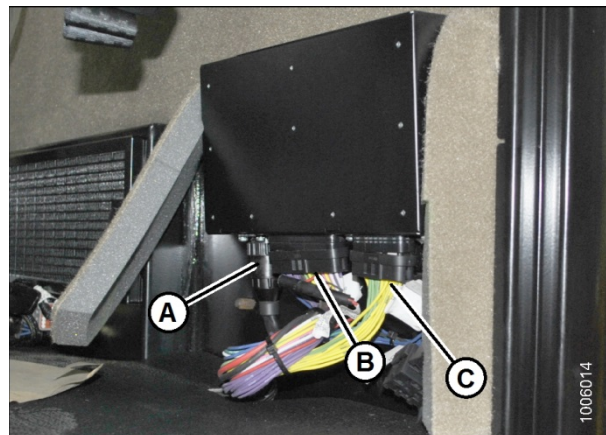


Figure 7: WCM Connected to Wiring Harness

3. Install two nuts (B) to secure the WCM to the frame.
4. Position the manual holder in front of the WCM as shown at right.
5. Install two nuts (A) to secure the manual holder to the frame.
6. Gently move the upholstery (C) to original position on both sides of the manual storage holder.

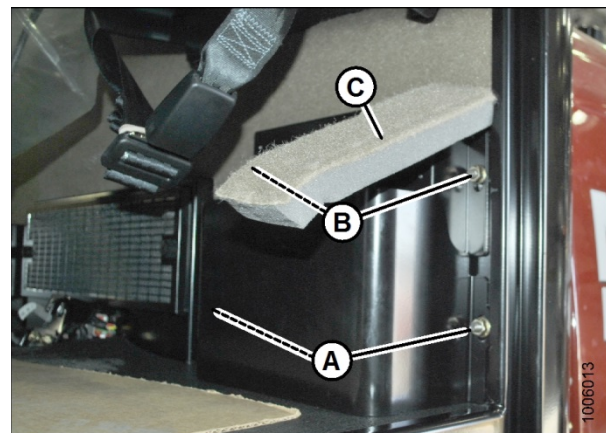


Figure 8: WCM and Manual Holder Installed

## M Series Self-Propelled Windrower WINDROWER CONTROL MODULE (WCM) SERVICE KIT (MD #183910) INSTALLATION INSTRUCTIONS

7. Turn the battery main disconnect switch (A) to the POWER ON position.

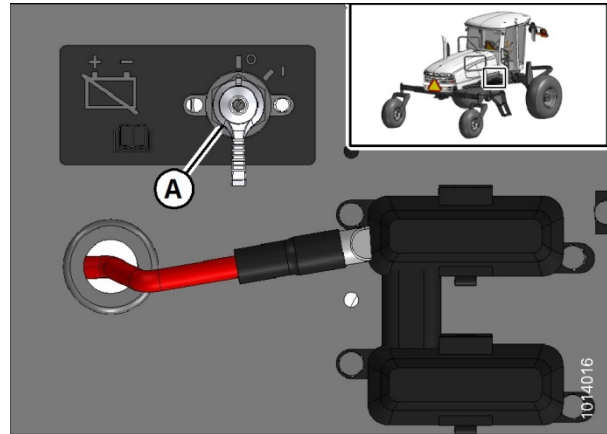


Figure 9: Battery Main Disconnect Switch

8. With the ignition key off, simultaneously press and hold DRAPER SPEED UP (A), LEFT FLOAT DOWN (B), PROGRAM (C), AND SELECT (D). After a 4-second delay, the display should read SELECT BRAND. Release the four buttons.
9. Verify that the display shows MACDON. Press SELECT (D).

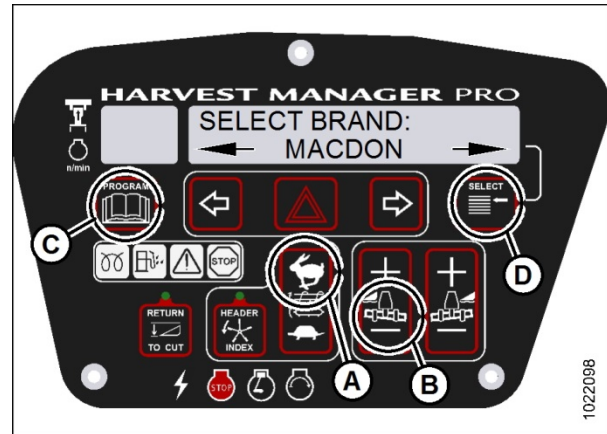


Figure 10: CDM Brand Selection

10. The display should now read SELECT MODEL. Use the left (A) or right (B) arrow to navigate the model menu. When the correct model is displayed, press SELECT (C). The screen will now go blank and the display lights will flash briefly as the system commits the changes.
11. Start windrower and ensure new WCM is functional.



Figure 11: CDM Model Selection

**M Series Self-Propelled Windrower  
WINDROWER CONTROL MODULE (WCM) SERVICE KIT (MD #183910)  
INSTALLATION INSTRUCTIONS**

**Checking and Programming Software**

**IMPORTANT:** Electronic modules are programmed with the latest software available at the time they are manufactured. Check the software versions for both cab display module (CDM) and windrower control module (WCM), and check the latest software version available for download at the MacDon Dealer Portal (<https://portal.macdon.com>). If installing into an M205 Windrower, re-programming the software is necessary. For instructions, refer to the windrower technical manual.