

**M205 Self-Propelled Windrower
CAB SUSPENSION LIMIT STRAP KIT (MD #167522)
INSTALLATION INSTRUCTIONS**

M205 Self-Propelled Windrowers may experience excessive cab movement during high-speed travel in the field. This movement may cause damage to the front cab shocks. The Cab Suspension Limit Strap kit is intended to reduce excess cab movement.

A list of parts included in the kit is provided.

NOTE: Keep your MacDon publications up-to-date. The most current version of this instruction can be downloaded from our Dealer-only site (<https://portal.macdon.com>) (login required).

NOTE: This document is currently available in English only.

Installation Time

The Cab Suspension Limit Strap kit takes approximately 2 hours to install.

Conventions

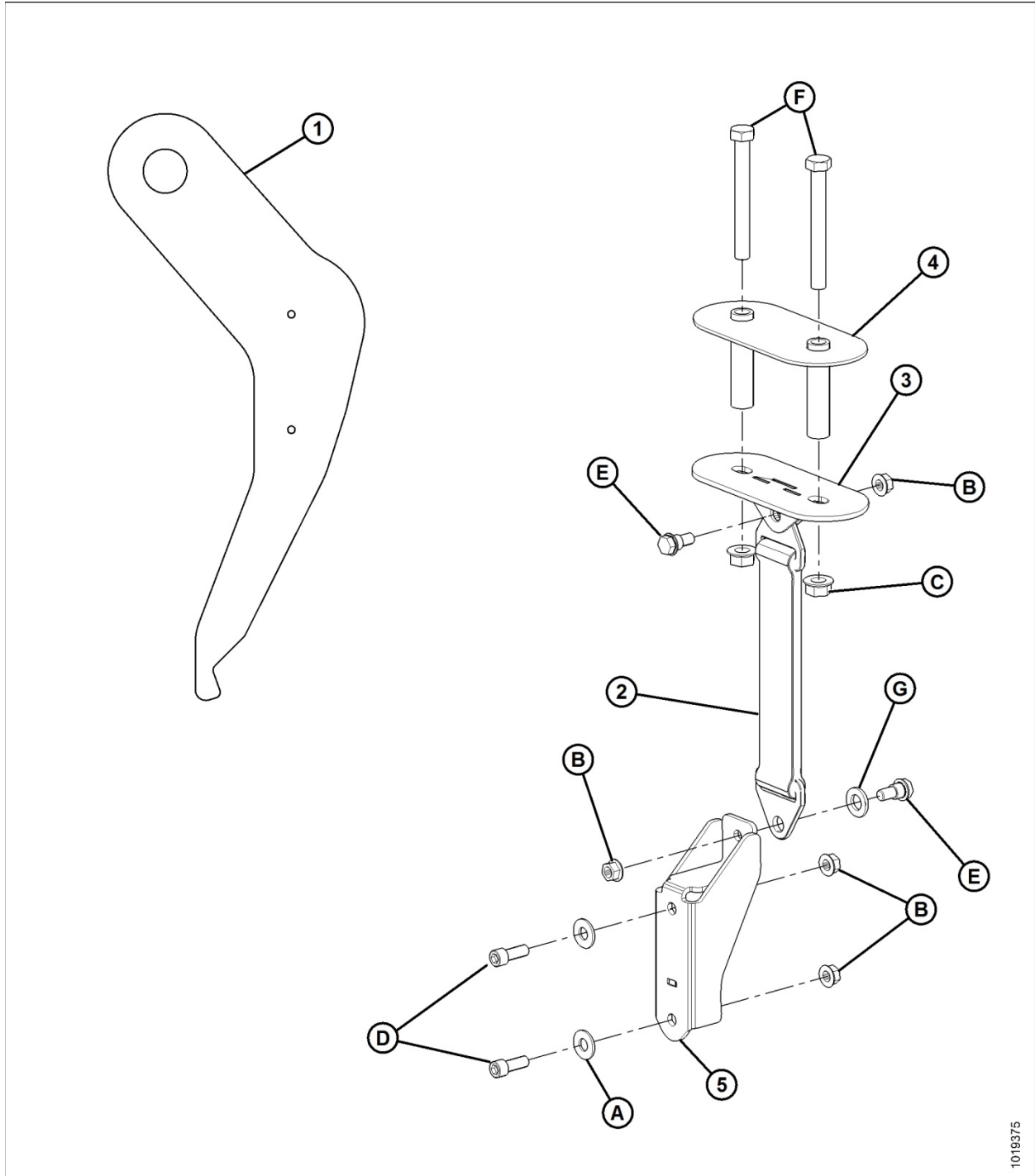
The following conventions are followed in this document:

- Right and left are determined from the operator's position, facing forward with the windrower in cab-forward position.
- Unless otherwise noted, use the standard torque values provided in the windrower operator's manual and technical manual.

**M205 Self-Propelled Windrower
CAB SUSPENSION LIMIT STRAP KIT (MD #167522)
INSTALLATION INSTRUCTIONS**

Part List

A parts list is provided in this instruction so that you can confirm that you have received all required parts before you begin installation.



1019375

**M205 Self-Propelled Windrower
CAB SUSPENSION LIMIT STRAP KIT (MD #167522)
INSTALLATION INSTRUCTIONS**

Ref	Part Number	Description	Quantity
1	NSS ¹	GUIDE – HOLE TEMPLATE	1
2	306850	STOP – LIMIT STRAP	2
3	167544	SUPPORT – CAB LIMIT MOUNT WELDMENT	2
4	167545	SUPPORT – CAB UPPER WELDMENT	2
5	167551	SUPPORT – LIMIT STRAP WELDT	2
A	18670	WASHER – FLAT SAE 7/16 ID X 1.0 IN OD AA1J	4
B	30228	NUT – FLANGE DT SM FACE 3/8-16 UNC-GR5 AA1J	8
C	50186	NUT – FLANGE LK DT 1/2-13 UNC GR5 AA1J	4
D	135381	BOLT – HEX SOC HD 3/8-16 X 1 GR8	4
E	172259	BOLT – SHOULDER .375-16 UNC AA1J	4
F	184539	BOLT – HEX HD 1/2 - 13 X 4.25 GR5 AA1J	4
G	30636	WASHER – FLAT NARROW M12-STL-SOFT AA1J	2

¹ Not sold separately.

**M205 Self-Propelled Windrower
CAB SUSPENSION LIMIT STRAP KIT (MD #167522)
INSTALLATION INSTRUCTIONS**

Installation Instructions

To install the Cab Suspension Limit Strap kit, follow these steps.

NOTE:

Throughout these instructions, when parts included in the kit are initially referenced, the part name is followed by its part number (MD #XXXXXX). If the part is not sold separately, the part name is followed by (MD #NSS). For more information, cross reference the part number to the parts list description and illustration.



DANGER

To avoid bodily injury or death from unexpected start-up of the machine, always stop the engine and remove the key from the ignition before leaving the operator's seat for any reason.

1. Shut of the engine, and remove the key from the ignition.
2. Roll floor mat (A) away from the front left or right corner of the cab to expose plug (B).

NOTE: The roof is not shown in the *Figure 1*.

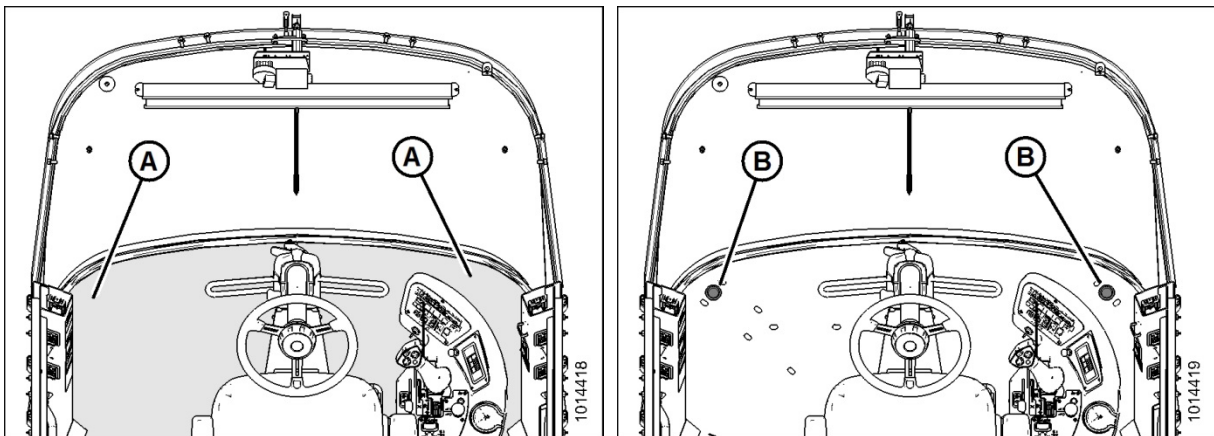


Figure 1: Top View of Windrower

**M205 Self-Propelled Windrower
CAB SUSPENSION LIMIT STRAP KIT (MD #167522)
INSTALLATION INSTRUCTIONS**

3. Clean the area and check that drill template (A) (MD #NSS) can lay flat on the floor.
4. Remove the plug from hole (C) in the floor. The plug covers the upper suspension mount hardware.
5. Align drill template (A) using vertical support post (B) and exposed suspension mount hole (C) as shown. The aligned drill template indicates proper drilling locations.
6. Hold drill template (A) in place and mark the two drill hole positions (D) using a 1/4 in. center punch.

NOTE: Remove the drill template before drilling any holes.

IMPORTANT: The floor is made of two layers. Drill only the top layer of the floor.

7. Drill 1/4 in. pilot holes at the center of the marked holes.
8. Gradually increase the drill bit size to create a 3/4 in. hole at each pilot hole location.

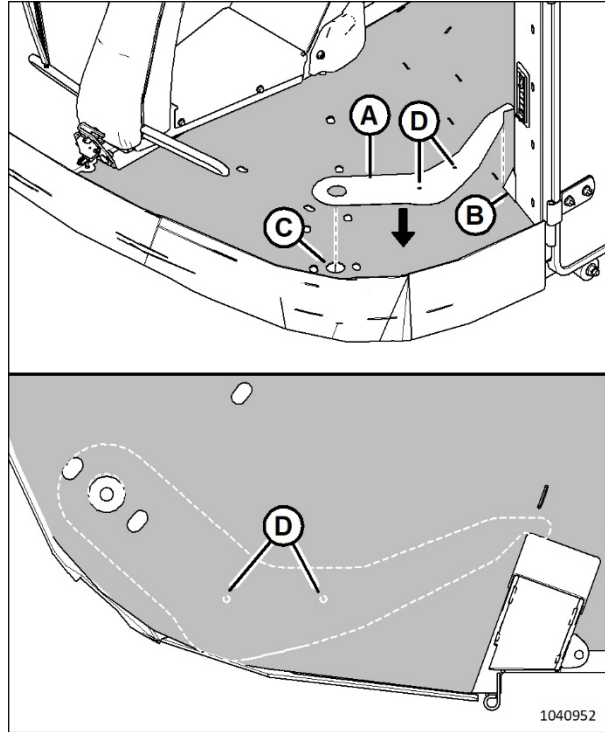


Figure 2: Drill Template Placement on Cab Floor

9. Insert cab support (A) (MD #167545) into drilled holes (B). Ensure the support sits flush to the cab floor.

NOTE: If the support does not fit, gradually increase the size of the holes using a round file or by drilling a slightly larger hole. Repeat until the cab support fits flush to the floor.

10. With the cab support sitting flush, mark a single drill location on the bottom layer of the floor by placing a 1/2 in. center punch through cab support (A).
11. Drill a small 1/4 in. pilot hole through the bottom floor. Gradually increase the drill bit size to create a 1/2 in. hole.
12. Place hex head bolt (MD #184539) through cab support (MD #167545) and floor.
13. Repeat Steps 9–11 to create the second 1/2 in. hole.

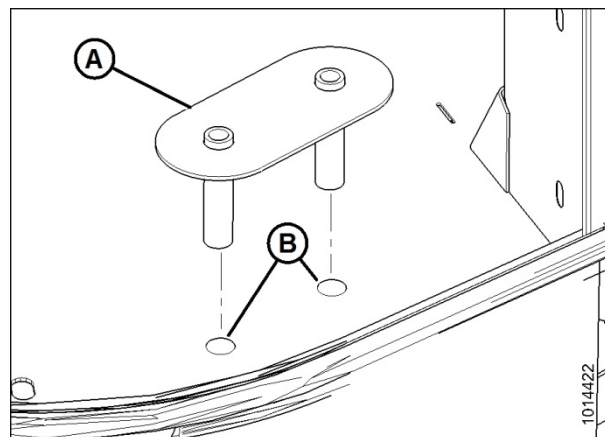


Figure 3: Cab Support Placement

**M205 Self-Propelled Windrower
CAB SUSPENSION LIMIT STRAP KIT (MD #167522)
INSTALLATION INSTRUCTIONS**

14. Remove foam around holes on the bottom of the cab so the cab limit mount (MD #167544) can sit flush against the cab.



Figure 4: Foam Removed from Windrower Cab

15. Align cab limit mount (A) (MD #167544) with the bolts extending through the bottom of the cab floor.
16. Secure the mount using two flange lock nuts (MD #50186). Torque the hardware to 107–118 Nm (79–87 lbf-ft).

NOTE: Ensure that small hole (B) on the support clevis faces the outboard side of the windrower.

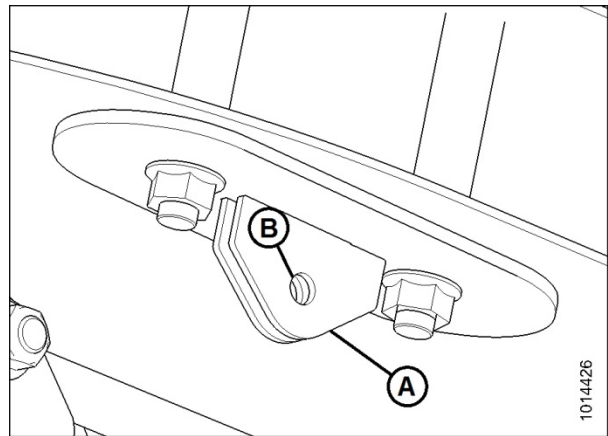


Figure 5: Installed Cab Limit Mount

17. Using two socket head screws (MD #135381), washers (MD #18670), and flange nuts (MD #30228), attach limit strap support (A) (MD #167551) to the windrower frame at the two existing holes in the lower shock mount. Tighten the hardware to 30–33 Nm (22–24 lbf-ft).

NOTE: Ensure the socket head hex screws and washers (B) face inboard side of the windrower.

NOTE: The front plate is removed from the illustration.

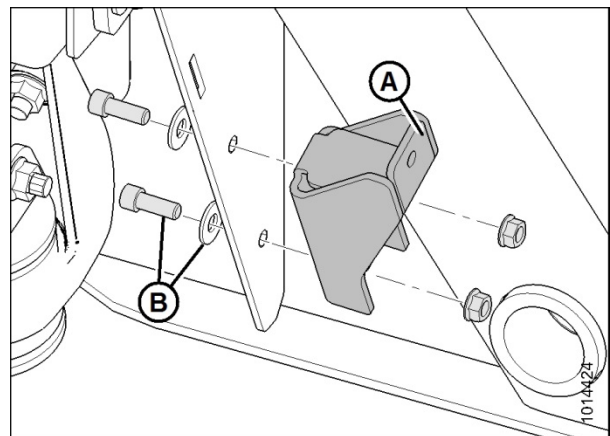


Figure 6: Limit Strap Support Attached to Shock Mount

**M205 Self-Propelled Windrower
CAB SUSPENSION LIMIT STRAP KIT (MD #167522)
INSTALLATION INSTRUCTIONS**

18. Connect limit strap (A) (MD #306850) to upper mount (B) using shoulder bolt (MD #172259) and flange nut (MD #30228).
19. Connect the limit strap to lower mount (C) using shoulder bolt (MD #172259), washer (MD #30636), and flange nut (MD #30228).

NOTE: Place the washer on the outside of the cab limit strap bracket on the lower mount.

20. Tighten the hardware to 30-33 Nm (22–24 lbf-ft).
21. Repeat the procedure on the opposite side of the windrower cab.

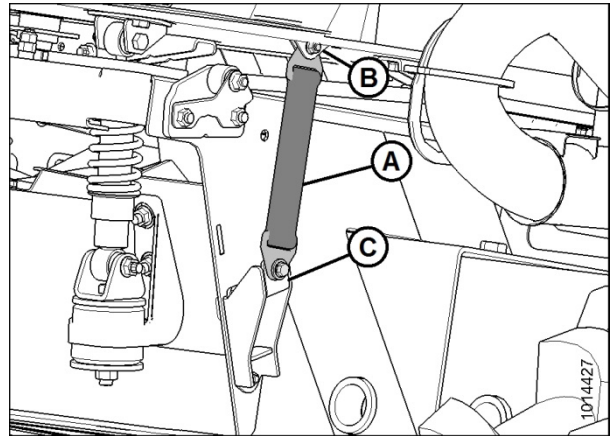


Figure 7: Installed Cab Limit Strap

**M205 Self-Propelled Windrower
CAB SUSPENSION LIMIT STRAP KIT (MD #167522)
INSTALLATION INSTRUCTIONS**

© 2023 MacDon Industries, Ltd.

The information in this publication is based on the information available and in effect at the time of printing. MacDon Industries, Ltd. makes no representation or warranty of any kind, whether expressed or implied, with respect to the information in this publication. MacDon Industries, Ltd. reserves the right to make changes at any time without notice.