

**FM100 Float Module, 872, 873, CA20, CA25, and CA25E, Combine Adapters
ROTATING TINE DRUM (RTD) REPAIR KIT (MD #114382)
INSTALLATION INSTRUCTIONS**

The RTD Repair kit can be used to repair damage around a finger on the feed auger drum on the FM100 Float Module, 872, 873, CA20, CA25, and CA25E Combine Adapters. A separate kit is required for each damaged area. This document explains how to use the kit.

A list of parts included in the kit is provided.

NOTE: Keep your MacDon publications up-to-date. The most current version of this instruction can be downloaded from our Dealer-only site (<https://portal.macdon.com>) (login required).

NOTE: This document is available in English only.

Installation Time

Installation time for this kit is approximately 30 minutes.

Conventions

The following conventions are followed in this document:

- Right- and left are determined from the operator's position. The front of the combine adapter is the side that faces the crop; the back is the side that connects to the combine.
- Unless otherwise noted, use the standard torque values provided in the header operator's manual and technical manual.

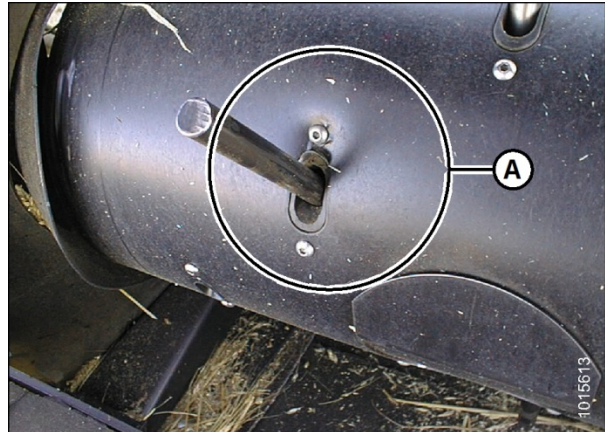


Figure 1: Damaged Auger Drum

A - Damaged Area

**FM100 Float Module, 872, 873, CA20, CA25, and CA25E, Combine Adapters
 ROTATING TINE DRUM (RTD) REPAIR KIT (MD #114382)
 INSTALLATION INSTRUCTIONS**

Parts List

This kit includes the following parts:

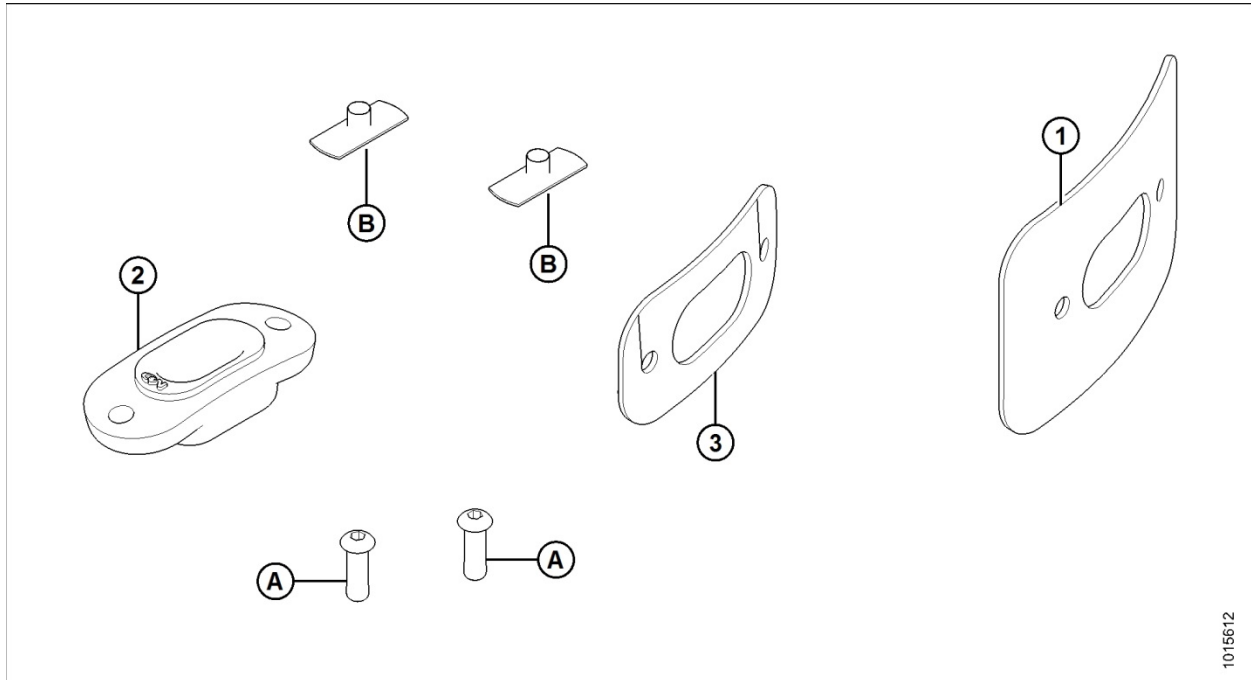


Figure 2: Parts Included in RTD Repair Kit

Ref	Part Number	Description	Quantity
1	NSS ¹	BAND – 120 MM LONG	1
2	187081	GUIDE	1
3	NSS	BAND – RTD KIT, 90 MM LONG	1
A	123084	SCREW – HEX SOCKET BUTTON HD	2
B	123202	NUT – TEE	2

¹ Not sold separately.

**FM100 Float Module, 872, 873, CA20, CA25, and CA25E, Combine Adapters
ROTATING TINE DRUM (RTD) REPAIR KIT (MD #114382)
INSTALLATION INSTRUCTIONS**

Installation Instructions

To install the RTD Repair kit, follow these steps:



CAUTION

To avoid bodily injury or death from unexpected startup of machine, always stop engine and remove key from ignition before leaving operator's seat for any reason.

1. Turn off engine and remove key.
2. Remove attaching screws (A), and then remove the access panel (B) closest to the damaged area.

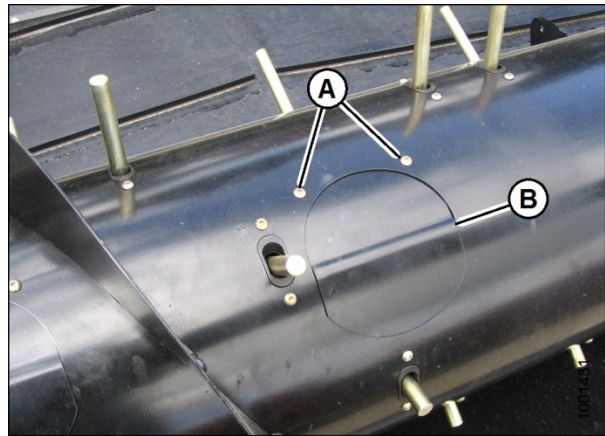


Figure 3: Access Panel

3. In the damaged area, from inside the auger drum, remove hairpin (A), and then pull tine (B) out of bushing (C). Retain hairpin for reassembly.
4. From inside the auger drum, swivel tine away from bushing, pull from plastic guide (D), and remove from auger. Retain tine for reassembly.
5. Remove screws securing plastic guide (D) to auger, and remove guide from inside auger. Discard guide and screws.

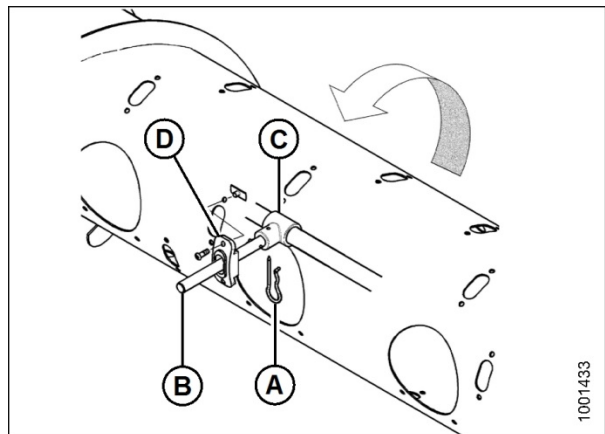


Figure 4: Auger Tine

**FM100 Float Module, 872, 873, CA20, CA25, and CA25E, Combine Adapters
ROTATING TINE DRUM (RTD) REPAIR KIT (MD #114382)
INSTALLATION INSTRUCTIONS**

- Using the smaller of the two bands provided in the kit as a template, cut out the damaged portion of the drum to the dimensions shown below (B = 45 mm (1-3/4 in.), C = 90 mm (3-1/2 in.)). Ensure the cut-out is slightly larger than band (A).

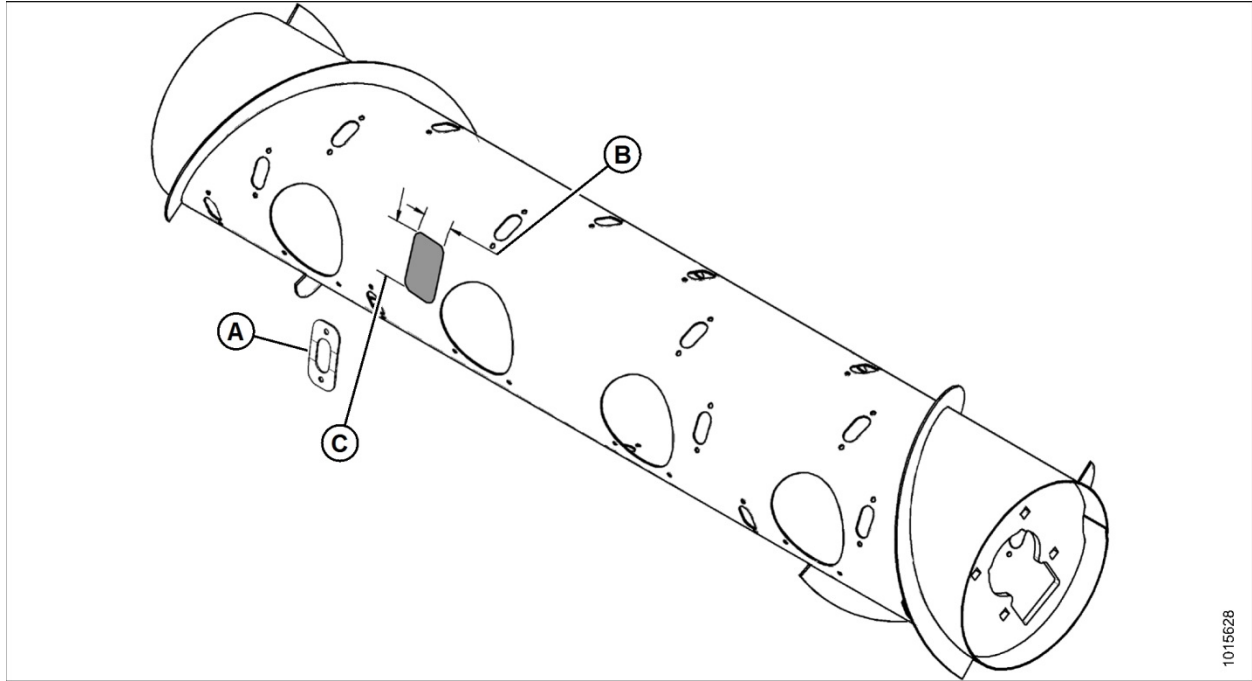


Figure 5: Cutout Measurements

FM100 Float Module, 872, 873, CA20, CA25, and CA25E, Combine Adapters
ROTATING TINE DRUM (RTD) REPAIR KIT (MD #114382)
INSTALLATION INSTRUCTIONS

7. Assemble the parts provided in the kit as shown, and clamp assembly on outside of auger drum, centering band (C) in the cutout made in Step 6.

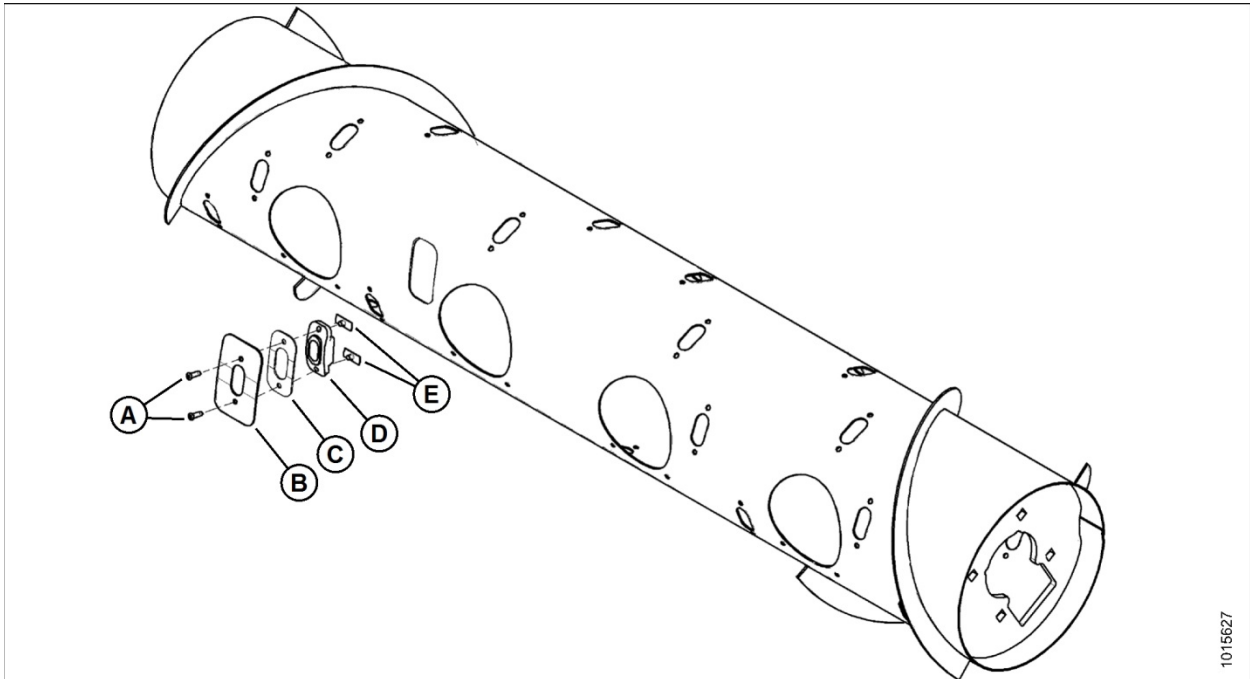


Figure 6: Assembling Parts on Outside of Auger Drum

8. Tack weld the larger band (B) to the auger drum in four places.
9. To prevent the plastic guide from melting, remove screws (A), plastic guide (D), and tee nuts (E).
10. Place a 2 mm fillet weld all the way around the larger band (B).
11. Replace screws (A), plastic guide (D), and tee nuts (E).
12. Insert the auger tine (removed in Step 4) through the new bands and guide.
13. Inside the auger drum, replace the auger tine in the bushing, and fasten in place with hairpin.
14. Replace access panel (B), and fasten in place with screws (A).

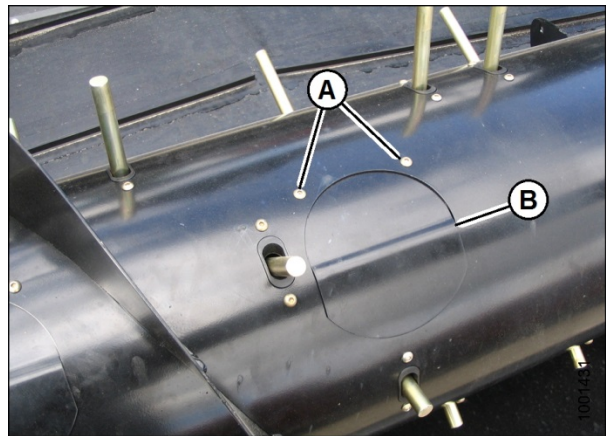


Figure 7: Access Panel

**FM100 Float Module, 872, 873, CA20, CA25, and CA25E, Combine Adapters
ROTATING TINE DRUM (RTD) REPAIR KIT (MD #114382)
INSTALLATION INSTRUCTIONS**

© 2020 MacDon Industries, Ltd.

The information in this publication is based on the information available and in effect at the time of printing. MacDon Industries, Ltd. makes no representation or warranty of any kind, whether expressed or implied, with respect to the information in this publication. MacDon Industries, Ltd. reserves the right to make changes at any time without notice.