

Model 5020 POWER TONGUE WINDROWER

PARTS CATALOG

Inside Front Cover
(blank)

**MacDon Model 5020
Power-Tongue Windrower
Parts Catalog**

CONTENTS

Main Frame, Tongue & Transport Lock..... 2
Hitch Group 3
Float and Lift Group..... 4, 5
Wheels and Tires 6, 7
Header Frame, Deflector & Shields..... 8, 9
Feed Pans & Stripper Bars..... 10, 11
Skid Shoes 12, 13
Steering & Lift Cylinder Hydraulics 14, 15
Header Drive Hydraulics 16 - 19
Pump/Gearbox Assembly..... 20, 21
Header Primary Drive..... 22, 23
Sickle and Belt Drive 24, 25
Sickle Stub Guards (Option)..... 26
Segmented Sickles..... 27
Sickle Drive Box 28, 29
Reel and Drive..... 30 - 33
Auger and Drive 34, 35
Conditioner Rolls & Drivelines..... 36, 37
Forming Shields 38, 39
Tool Box & Wrench 40
Light Group..... 41
Decals & Reflectors..... 42, 43
Paint 43
Product Identification Decals..... 44, 45
Hydraulic Header Angle Kits (Attachment)..... 46, 47
Tall Crop Kit (Attachment)..... 48

Numerical List..... 49 - 52
Suggested Stocking List..... 53, 54

ABBREVIATIONS:

- L/H - left hand, determined from Operator's position, facing forward.
- R/H - right hand
- ID - inside diameter
- OD - outside diameter
- NC - national coarse thread
- NF - national fine thread
- AR - as required (quantity varies with header size)
- REF - reference, part number is called up elsewhere in catalog.
- NSS - not serviced separately

NOTE: Common hardware is not illustrated. Alphabetic references are used to designate position and description of these items.

When ordering, be sure the complete and proper serial number is given.
Some parts vary with header size; be sure you are ordering the correct number for your windrower.

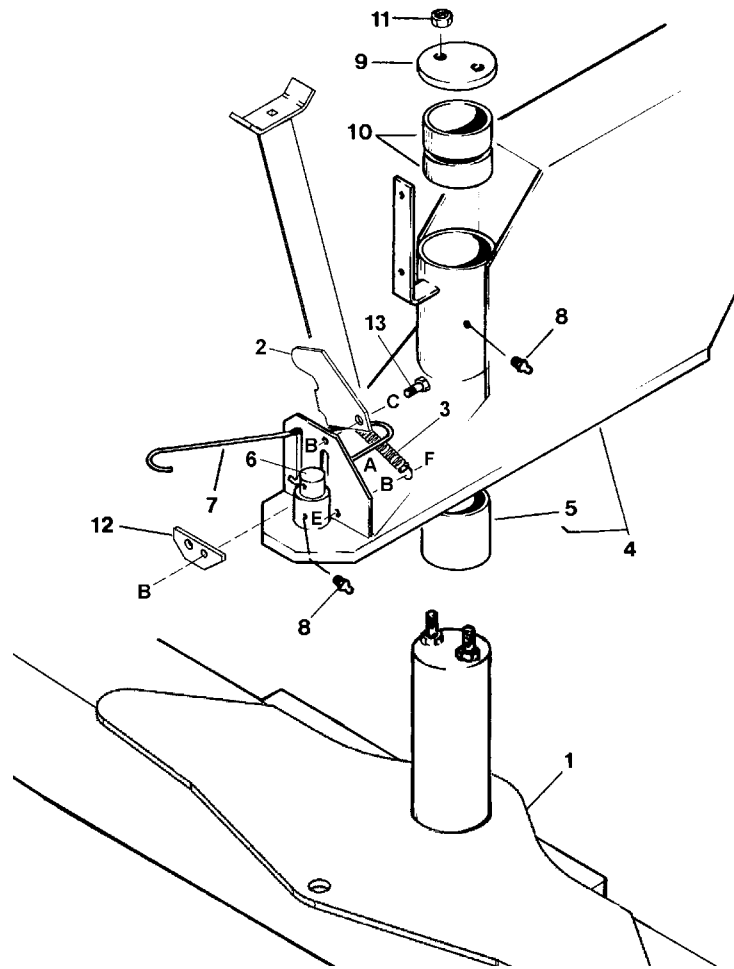
SERIAL NUMBER BREAKS:

The side of the serial number on which the dash (-) appears determines whether the part is used "up to" or "after" the serial number given.

- Example: -77746 Used on machines up to and including serial number 77746.
- 77747- Used on machines including and after serial number 77747.

BOLDED PART NUMBERS INDICATE CHANGE FROM PREVIOUS PRODUCTION YEAR

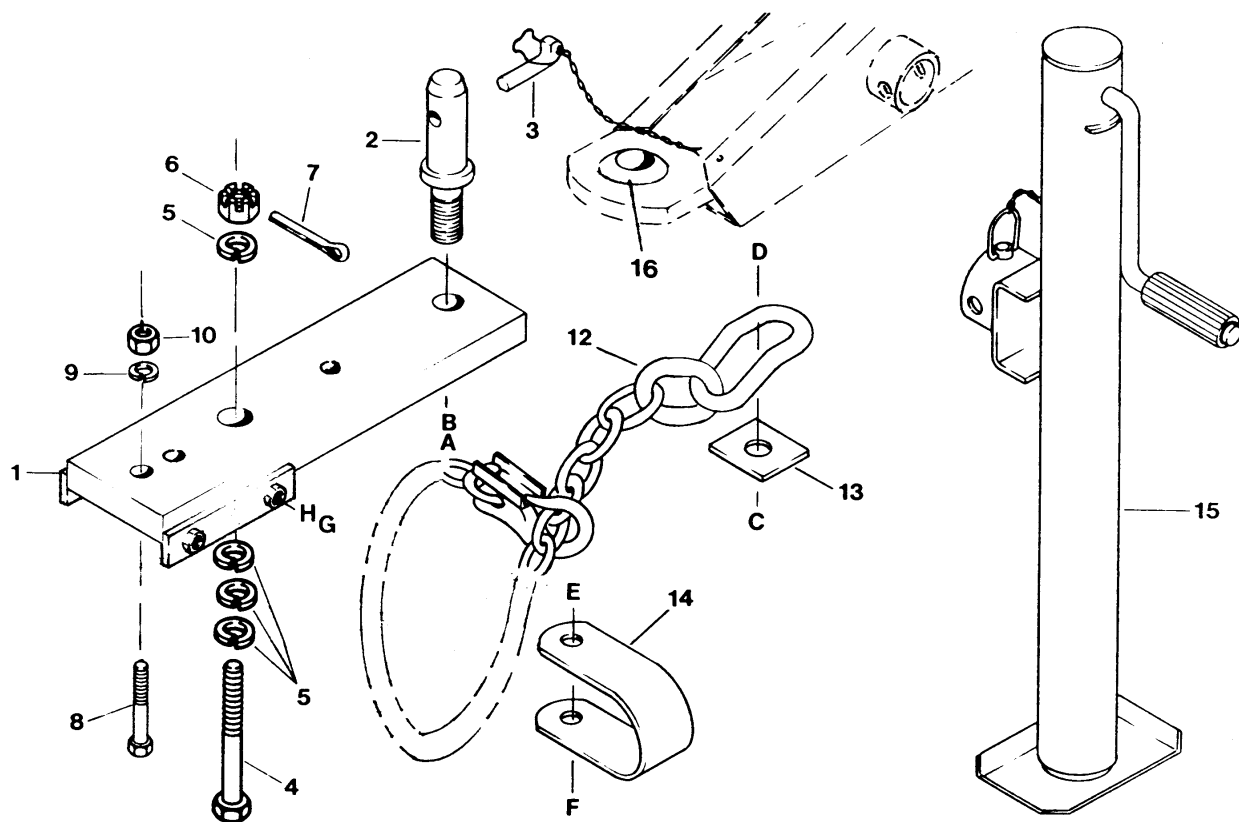
MAIN FRAME, TONGUE & TRANSPORT LOCK



REF	PART NUMBER	DESCRIPTION	QTY	SERIAL NUMBER
1	REF	FRAME - main, not serviced.....	1	
2	115559	PLATE – rod retainer.....	1	
3	115667	SPRING - extension.....	1	
4	140306	TONGUE - 12 ft. header, incl. items 5 (qty 1) and 10 (qty. 2) & decals*	1	was 41590
	140307	TONGUE - 14 ft. header, incl. items 5 (qty 1) and 10 (qty. 2) & decals*	1	was 41591
	140308	TONGUE - 16 ft. header, incl. items 5 (qty 1) and 10 (qty. 2) & decals*	1	was 41592
5	36836	BUSHING - plastic.....	1	
6	41660	PIN - transport lock.....	1	
7	41659	ROD - transport lock.....	1	
8	18671	FITTING - lube.....	2	
9	41100	RETAINER - frame shaft.....	1	
10	36823	BUSHING - plastic.....	2	
11	18666	NUT - lock, 5/8 NC distorted thread	2	
12	115133	BAR – rod retainer.....	1	
13	27647	BOLT – hex head, shoulder, 3/8 NC	1	
A	20077	BOLT – hex head, 3/8 NC x 1 inch		
B	30228	NUT – lock, smooth flange, 3/8 NC distorted thread		
C	18599	WASHER – flat, 17/32 inch ID		
E	50004	BOLT – hex head, 3/8 NC x 1-1/4 inch thread full length		
F	18669	NUT – lock, 3/8 NC distorted thread		

* **NOTE:** Item 4 includes safety and information decals but not Product I.D. decals. Order these separately. See page 44.

HITCH GROUP



REF	PART NUMBER	DESCRIPTION	QTY	SERIAL NUMBER
1	41650	EXTENSION - hitch	1	
2	30903	PIN - hitch	1	
3	30902	PIN - lock	1	
4	41655	BOLT - drilled, 1 NC x 4 inch	1	
5	18642	WASHER - lock, 1 inch	4	
6	30898	NUT - slotted hex, 1 NC	1	
7	18609	PIN - cotter, 1/4 x 2 inch	1	
8	21406	BOLT - hex head, 5/8 NC x 3-1/2 inch	1	
9	18639	WASHER - lock, 5/8 inch	1	
10	18666	NUT - lock, 5/8 NC distorted thread	1	
12	21404	CHAIN - hitch	1	
13	29467	WASHER - flat	1	
14	29598	CLEVIS - hitch chain	1	
15	41785	JACK - hitch - 2000 lb. capacity	1	-150558
	140269	JACK - hitch - 5000 lb. capacity, see NOTE below	1	150559-
16	30904	BALL JOINT - hitch (welded)	1	
A	18855	NUT - hex, 7/8 NF		
B	18641	WASHER - lock, 7/8 inch		
C	19957	BOLT - hex head, 3/4 NC x 2-1/2 inch		
D	18689	NUT - lock, 3/4 NC distorted thread		
E	21406	BOLT - hex head, 5/8 NC x 3-1/2 inch		
F	18666	NUT - lock, 5/8 NC distorted thread		
G	21871	BOLT - hex head, 5/8 NC x 2-1/2 inch thread full length		
H	18592	NUT - hex, 5/8 NC		

NOTE: Ensure jack is 5000 lb. capacity before using it to lift frame for wheel repositioning. Jack label must indicate 5000 lb. maximum capacity. Production units prior to 2003 are equipped with a 2000 lb. capacity jack intended for tongue only. The 2000 lb. capacity jack is not adequate for lifting frame.

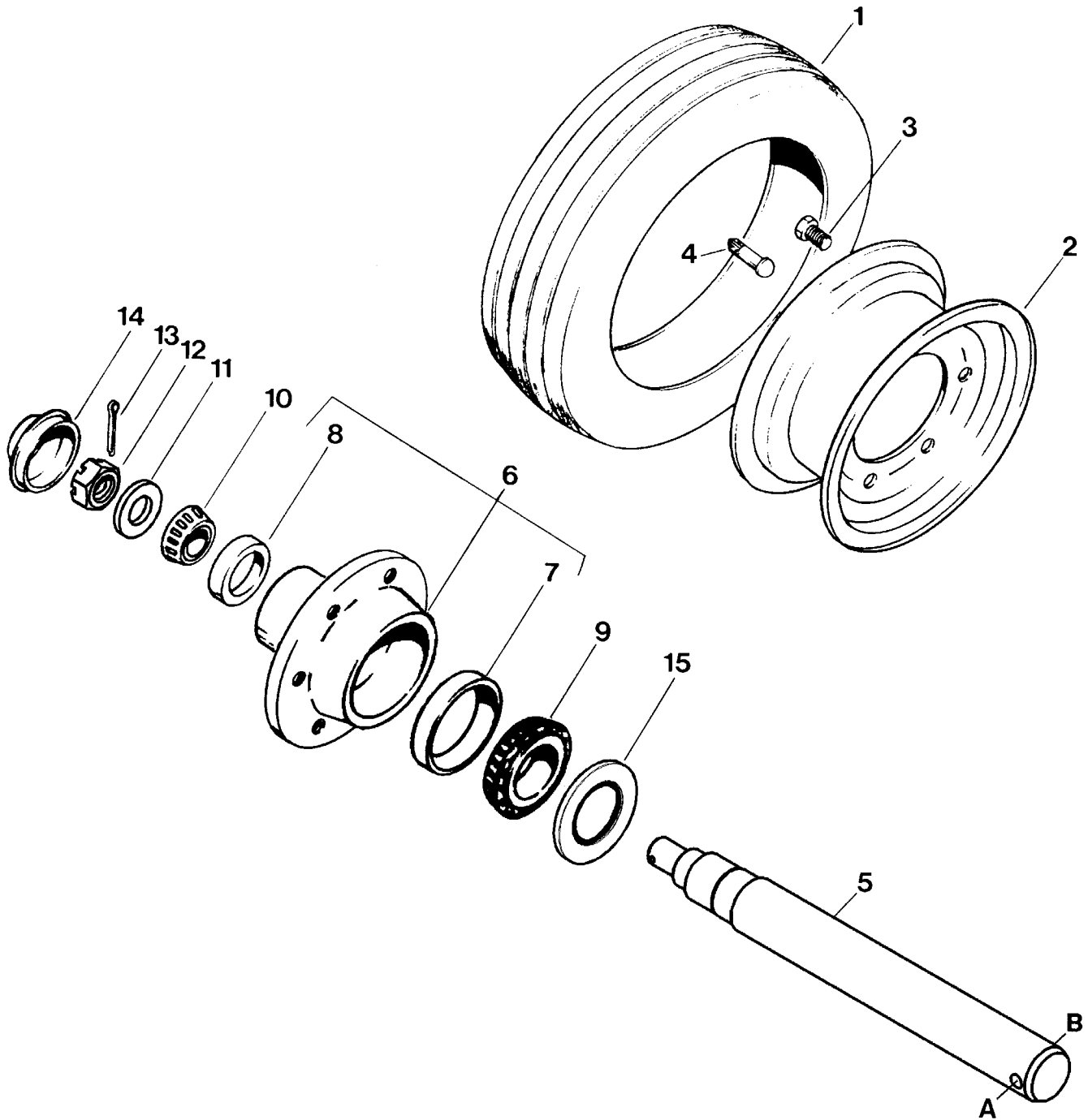
FLOAT AND LIFT GROUP

REF	PART NUMBER	DESCRIPTION	QTY		SERIAL NUMBER
			12' / 14' & 16'		
1	41090	ARM - with two bushings (item 2) & fitting (item 3).....	2		
2	1134	BUSHING - bronze	8		
3	18671	FITTING - lube.....	4		
4	41098	SPACER - tube.....	2		
5	140238	ARM - float.....	2		
6	24408	PIN - float arm to cylinder mount	2		
7	41107	PIN - lift cylinder.....	4		
8	50193	PIN - lynch	1		
9	41881	STOP - lift cylinder.....	2		
10	19926	PIN - clevis	2		
11	13125	PIN - hair.....	2		
12	41114	BAR - float link	4		
13	11644	SPACER - tube.....	2		
14	41118	PIN - spring anchor.....	2		
15	41122	BOLT - float adjusting	2		
16	21540	WASHER - flat, hardened.....	2		
17	36837	PIVOT - float spring	2		
18	24322	INSERT - spring, rear R/H, 12' only	1 / 0		
19	42690	SPRING - float, 3-3/4 inch OD.....	2		
20	41127	ARM - lower link, (includes 2 of item 2, 1 of item 21, and 1 of item 3)	2		
21	21897	BUSHING - rubber.....	2		
23	30464	PIN - clevis, 3/4 dia. x 2.76 inch effective length	1		
26	47922	INSERT - spring, upper, 5/8 NC thread.....	2		-156149
	41405	INSERT - spring, upper, 5/8 NC thread	2		156150-
27	115856	SPRING - float, 2-1/2 inch OD.....	2		-156149
	41388	SPRING - float, 3 inch OD	2		156150-
29	140064	BAR - center link.....	1		
30	140312	ROD - adjusting, cutterbar angle	1		
32	REF	CYLINDER - lift, see "Steering & Lift Cylinder Hydraulics"			
33	40766	SPRING - float, 2-1/4 inch OD, left hand only, (see note 1)	1		
35	24416	SPACER - tube.....	4		
36	30061	PIN - roll, 3/8 x 2 inch	2		
37	41244	PIN - straight, 12' & 14' headers	2		
	115825	PIN - straight, 16' header	2		
38	47925	INSERT - spring, lower	2		-156149
	41408	INSERT - spring, lower	2		156150-
39	18620	PIN - clevis, 5/8 x 1-3/8 inch.....	2		
40	42691	INSERT - spring, front	2		
41	41358	INSERT - spring, rear, left hand only, (see note 1).....	1		
42	41357	INSERT - spring, inner, left hand only, (see note 1).....	1		
43	140370	BAR - stop	2		156150-
A	30387	BOLT - hex head, 3/4 NC x 6-1/2 inch		M 18590	NUT - hex, 3/8 NC
B	18640	WASHER - lock, 3/4 inch		P 21562	BOLT - hex head, 5/8 NC x 5 inch
C	18593	NUT - hex, 3/4 NC		Q 18639	WASHER - lock, 5/8 inch
D	20078	BOLT - hex head, 3/8 NC x 1-3/4 inch		R 18592	NUT - hex, 5/8 NC
E	18669	NUT - lock, 3/8 NC distorted thread		S 21733	BOLT - hex head, 3/4 NC x 4-1/2 inch
F	19957	BOLT - hex head, 3/4 NC x 2-1/2 inch		T 50080	BOLT - hex hd, 5/8 NC x 4-1/2" full thread
G	21733	BOLT - hex head, 3/4 NC x 4-1/2 inch		U 18600	WASHER - flat, 21/32 inch ID
H	18601	WASHER - flat, 13/16 inch ID		V 21560	BOLT - hex head, 1/2 NC x 3 inch
J	18689	NUT - lock, 3/4 NC distorted thread		W 18697	NUT - lock, 1/2 NC distorted thread
K	19965	BOLT - rnd. hd, sq. neck 3/8 NC x 1"		X 18648	PIN - cotter, 3/16 x 1-1/4 inch
L	18637	WASHER - lock, 3/8 inch			

NOTES:

- For items 33, 41 & 42 - For 14' & 16' units with serial number 156149 and below, quantity is 2, used on both left and right springs. For all 12' units and 14' & 16' units with serial number 156150 and above, qty is 1, used on left hand side only.

WHEELS AND TIRES

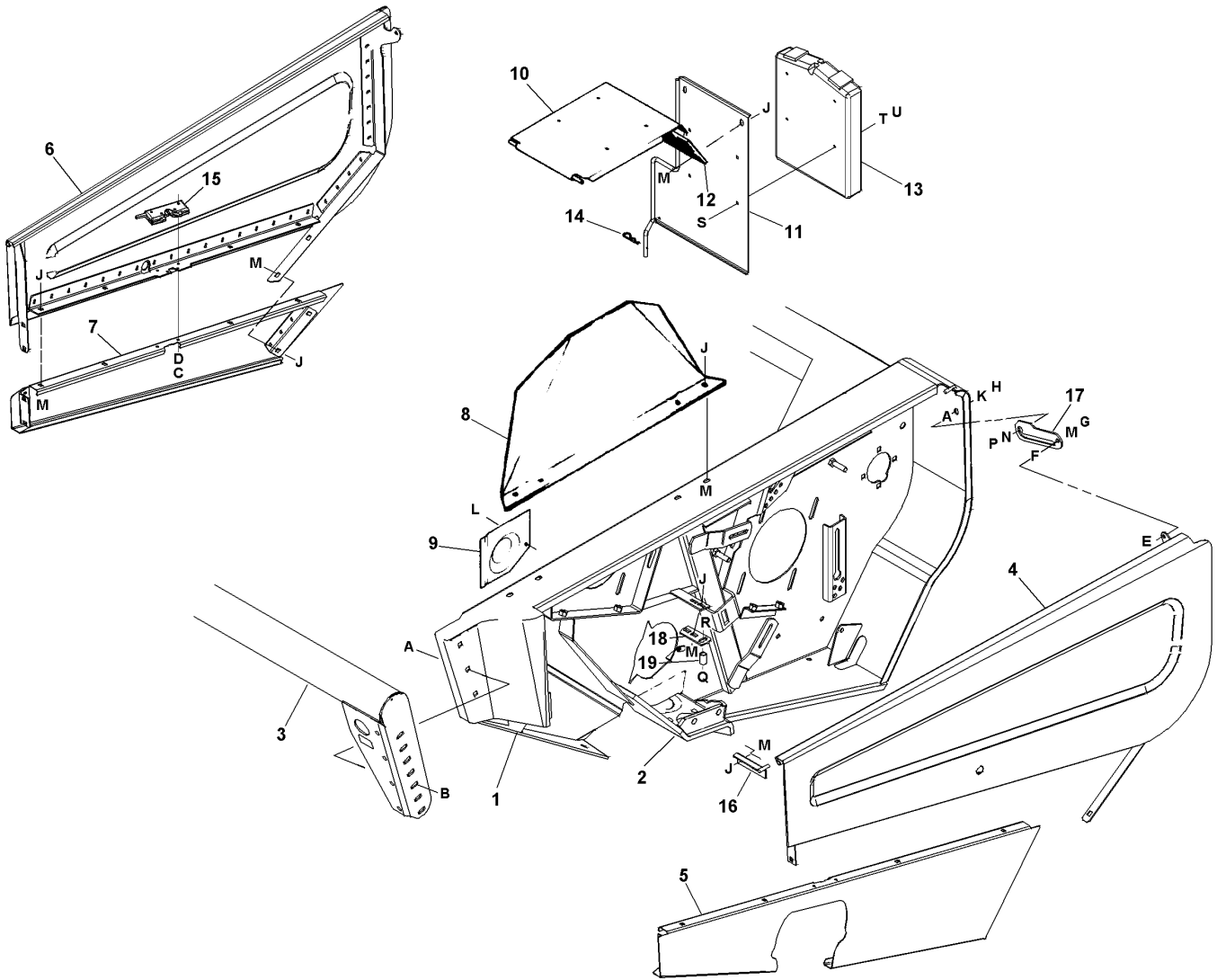


WHEELS AND TIRES

REF	PART NUMBER	DESCRIPTION	QTY	SERIAL NUMBER
1	30889	TIRE - 31 x 13.5-15 NHS 8 ply Terra-Rib	2	
2	30890	WHEEL - 15 x 10 LB, MacDon White	2	
	140309	WHEEL - 15 x 10 LB, Hitachi Sparkling White		
3	18916	BOLT - wheel, 9/16 NF	12	
4	21153	STEM - valve	2	
5	140245	SPINDLE - wheel	2	
6	140246	HUB - with cups, items 7 and 8	2	
7	140249	BEARING - cup, inner	2	
8	30701	BEARING - cup, outer	2	
9	140247	BEARING - cone, inner	2	
10	30702	BEARING - cone, outer	2	
11	31774	WASHER - flat, hardened	2	
12	19878	NUT - hex slotted, 1 inch NF	2	
13	18608	PIN - cotter	2	
14	140250	CAP - dust	2	
15	140248	SEAL - shaft	2	
A	30011	BOLT - hex head, 1/2 NC x 3-1/4 inch		
B	18697	NUT - lock, 1/2 NC distorted thread		

NOTE: For prior models 5000 and 5010, an upgrade can be made to replace hub/spindle assembly with the above items 5 to 15 inclusive, must be ordered as a group. Individual items are not interchangeable.

HEADER FRAME, DEFLECTOR & SHIELDS



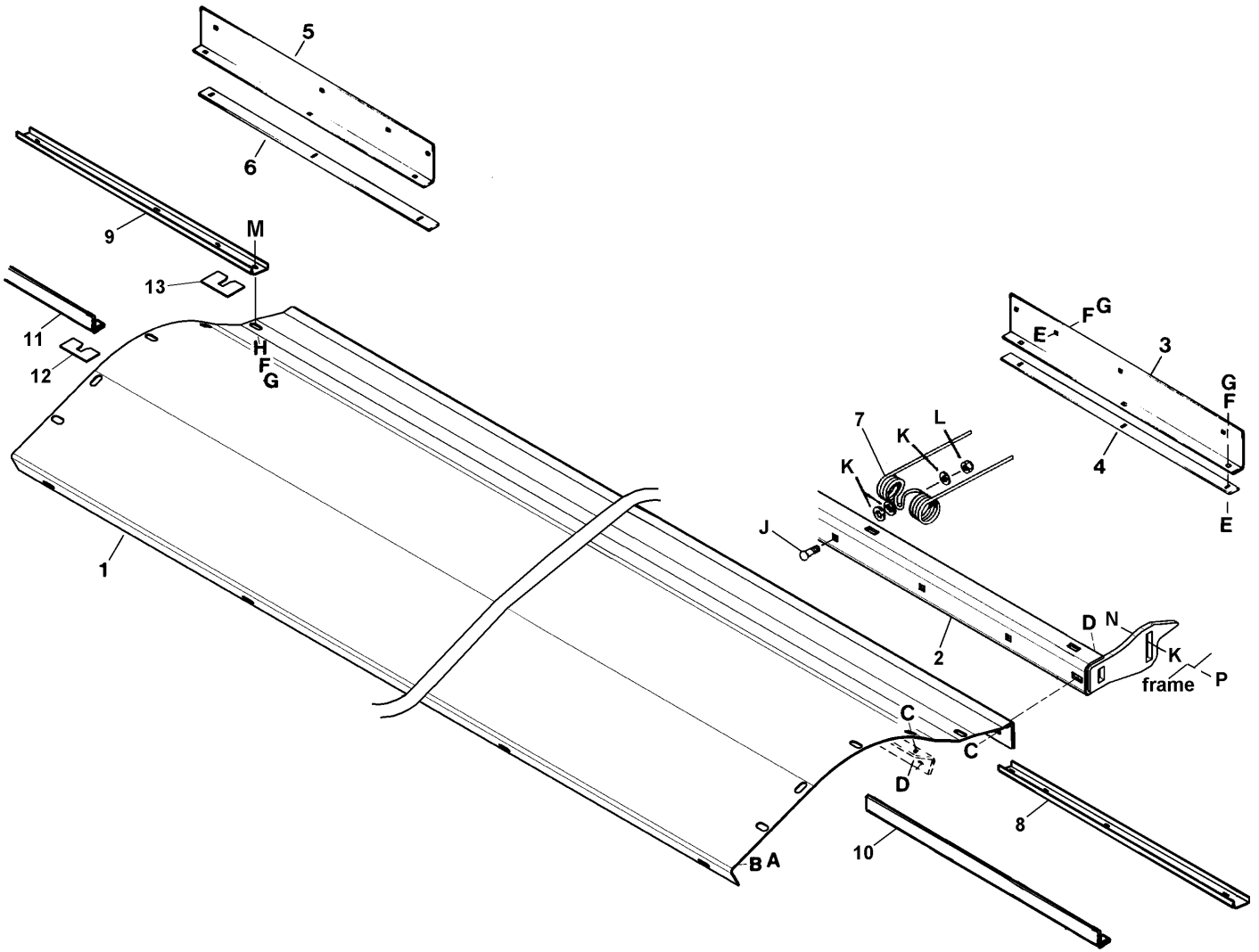
HEADER FRAME, DEFLECTOR & SHIELDS

REF	PART NUMBER	DESCRIPTION	QTY	SERIAL NUMBER
1	REF	HEADER - frame, not serviced.....	1	
2	114027	SUPPORT - sickle drive box, (welded).....	1	
		NOTE: Also required - 32926 Welding Jig - TO BE RETURNED		
3	115469	DEFLECTOR - lean bar, 12 ft. header.....	1	
	115470	DEFLECTOR - lean bar, 14 ft. header.....	1	
	115471	DEFLECTOR - lean bar, 16 ft. header.....	1	
4	140087	SHIELD - drives, left upper – red (see Note 1).....	1	
	140292	SHIELD - drives, left upper – green (see Note 1).....	1	
5	140089	SHIELD - drives, left lower.....	1	
6	140088	SHIELD - drives, right upper – red (see Note 1).....	1	
	140293	SHIELD - drives, right upper – green (see Note 1).....	1	
7	140090	SHIELD – drives, right lower.....	1	
8	41528	SHIELD - reel, left side.....	1	
9	37367	SHIELD - sickle drive box.....	1	
10	41809	SHIELD - primary drive, with decal.....	1	
11	140258	SHIELD - roll drivelines, with decal.....	1	
12	41540	HINGE - rubber.....	1	
13	118234	CASE – manual storage.....	1	
14	15380	PIN – hair.....	1	
15	140072	LATCH – shield.....	2	
16	140058	SUPPORT – shield hinge pin, left.....	1	
	140059	SUPPORT – shield hinge pin, right.....	1	
17	140103	SUPPORT – rear, shield hinge.....	2	
18	140028	BAR – catch mount.....	2	
19	37886	SPACER – latch catch.....	2	
A	21383	NUT - serrated flange lock, 1/2 NC		
B	21868	BOLT – round head, short square neck, 1/2 NC x 1 inch		
C	21573	BOLT – hex head, 1/4 NC x 1 inch		
D	18635	WASHER – lock, 1/4 inch		
E	50004	BOLT – hex head, 3/8 NC x 1-1/4 inch		
F	18598	WASHER – flat, 13/32 inch I.D.		
G	18664	NUT – hex jam, 3/8 NC		
H	30528	BOLT – hex head, 1/2 NC x 3-1/2 inch, thread full length		
J	21863	BOLT - round head, short square neck, 3/8 NC x 3/4 inch		
K	18599	WASHER – flat, 17/32 inch I.D.		
L	30693	BOLT - hex flange head, 3/8 NC x 1/2 inch		
M	30228	NUT - lock, smooth flange, 3/8 NC distorted thread		
N	50186	NUT – lock, smooth flange, 1/2 NC distorted thread		
P	21056	NUT – hex jam, 1/2 NC		
Q	21576	BOLT – hex head, 1/2 NC x 2 inch		
R	18697	NUT – lock, 1/2 NC distorted thread		
S	30242	BOLT – round head, square neck, 1/4 NC x 5/8 inch		
T	18596	WASHER – flat, 9/32 inch I.D.		
U	18724	NUT – lock, 1/4 NC distorted thread		

NOTES:

(1) – Left and right side drive shields (items 4 and 6) do **not** include rainbow or product I.D. decals

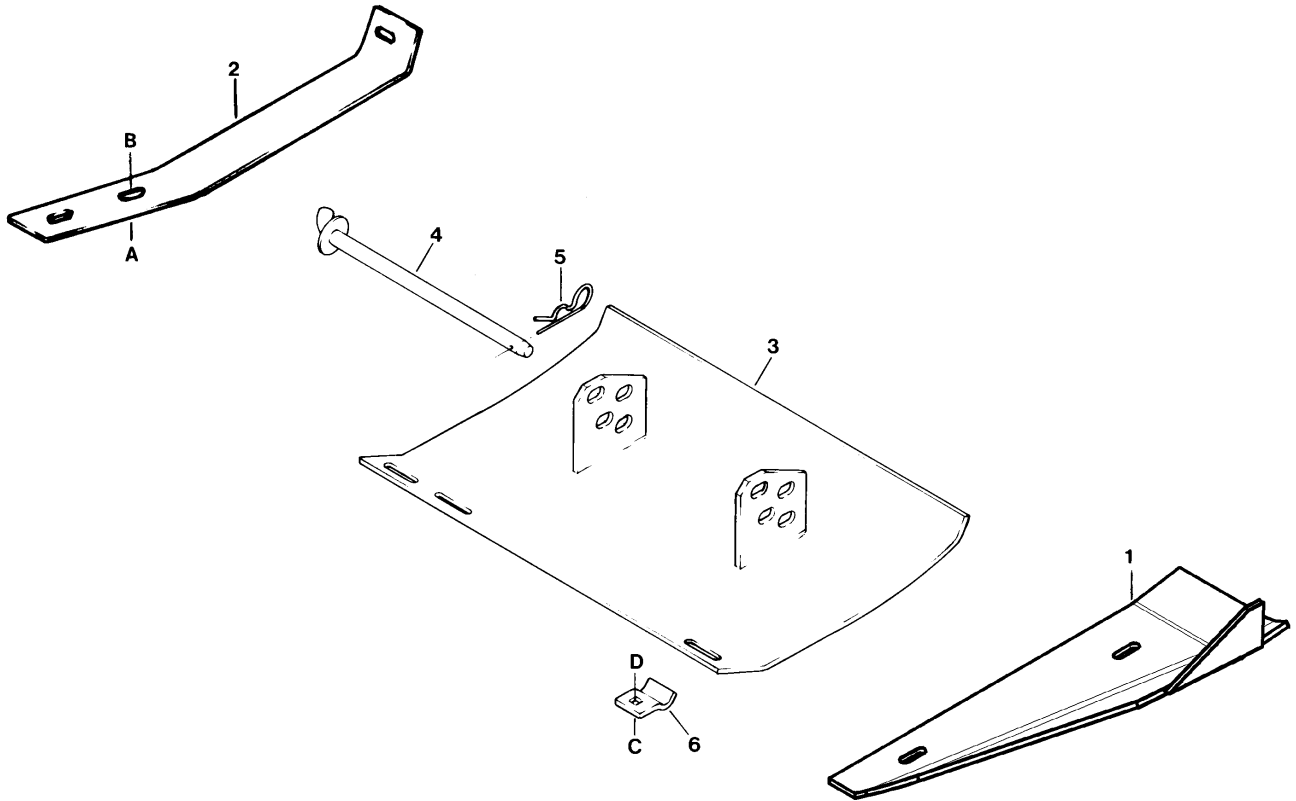
FEED PANS & STRIPPER BARS



FEED PANS & STRIPPER BARS

REF	PART NUMBER	DESCRIPTION	QTY	SERIAL NUMBER
1	41451	PAN – feed (was 115704)	1	-156149
	140353	PAN – feed	1	156150-
2	41420	CHANNEL - feed pan support	1	-150558
	140355	CHANNEL - feed pan support (was 140267)	1	150559-
3	115412	ANGLE - stripper, left rear - 12 ft. header.....	1	
	115413	ANGLE - stripper, left rear - 14 ft. header.....	1	
	115414	ANGLE - stripper, left rear - 16 ft. header.....	1	
4	41376	BAR - stripper, left rear - 12 ft. header.....	1	
	41377	BAR - stripper, left rear - 14 ft. header.....	1	
	41378	BAR - stripper, left rear - 16 ft. header.....	1	
5	115416	ANGLE - stripper, right rear - 12 ft. header.....	1	
	115417	ANGLE - stripper, right rear - 14 ft. header.....	1	
	115418	ANGLE - stripper, right rear - 16 ft. header.....	1	
6	41379	BAR - stripper, right rear - 12 ft. header	1	
	41380	BAR - stripper, right rear - 14 ft. header	1	
	41381	BAR - stripper, right rear - 16 ft. header	1	
7	47681	FINGER - steel	11	
8	115088	CHANNEL – stripper. left center – 12 ft. header	1	
	115089	CHANNEL – stripper. left center – 14 ft. header	1	
	115090	CHANNEL – stripper. left center – 16 ft. header	1	
9	115093	CHANNEL – stripper. right center – 12 ft. header	1	
	115094	CHANNEL – stripper. right center – 14 ft. header	1	
	115095	CHANNEL – stripper. right center – 16 ft. header	1	
10	115654	ANGLE - stripper, left front - 12 ft. header.....	1	
	115655	ANGLE - stripper, left front - 14 ft. header.....	1	
	115656	ANGLE - stripper, left front - 16 ft. header.....	1	
11	115658	ANGLE - stripper, right front - 12 ft. header.....	1	
	115659	ANGLE - stripper, right front - 14 ft. header.....	1	
	115660	ANGLE - stripper, right front - 16 ft. header.....	1	
12	155100	SHIM – stripper bar, use with front strippers	A/R	
13	155101	SHIM – stripper bar, use with center strippers	A/R	
A	21055	SCREW - self-tapping, 1/4 NC x 1/2 inch		
B	18596	WASHER - flat, 9/32 inch ID		
C	21863	BOLT - round head, square neck, 3/8 NC x 3/4 inch		
D	21452	NUT - serrated flange lock, 3/8 NC		
E	21281	BOLT - round head, square neck, 5/16 NC x 3/4 inch		
F	18636	WASHER - lock, 5/16 inch		
G	18589	NUT - hex, 5/16 NC		
H	18597	WASHER - flat, 11/32 inch ID		
J	21484	BOLT - round head, square neck, 3/8 NC x 1-1/2 inch		
K	18599	WASHER - flat, 17/32 inch I.D.		
L	30228	NUT - lock, smooth flange, 3/8 NC distorted thread		
M	21282	BOLT - round head, square neck, 5/16 NC x 1 inch		
N	21471	BOLT – round head, square neck, 1/2 NC x 1-1/4 inch		
P	50186	NUT - lock, smooth flange, 1/2 NC distorted thread		

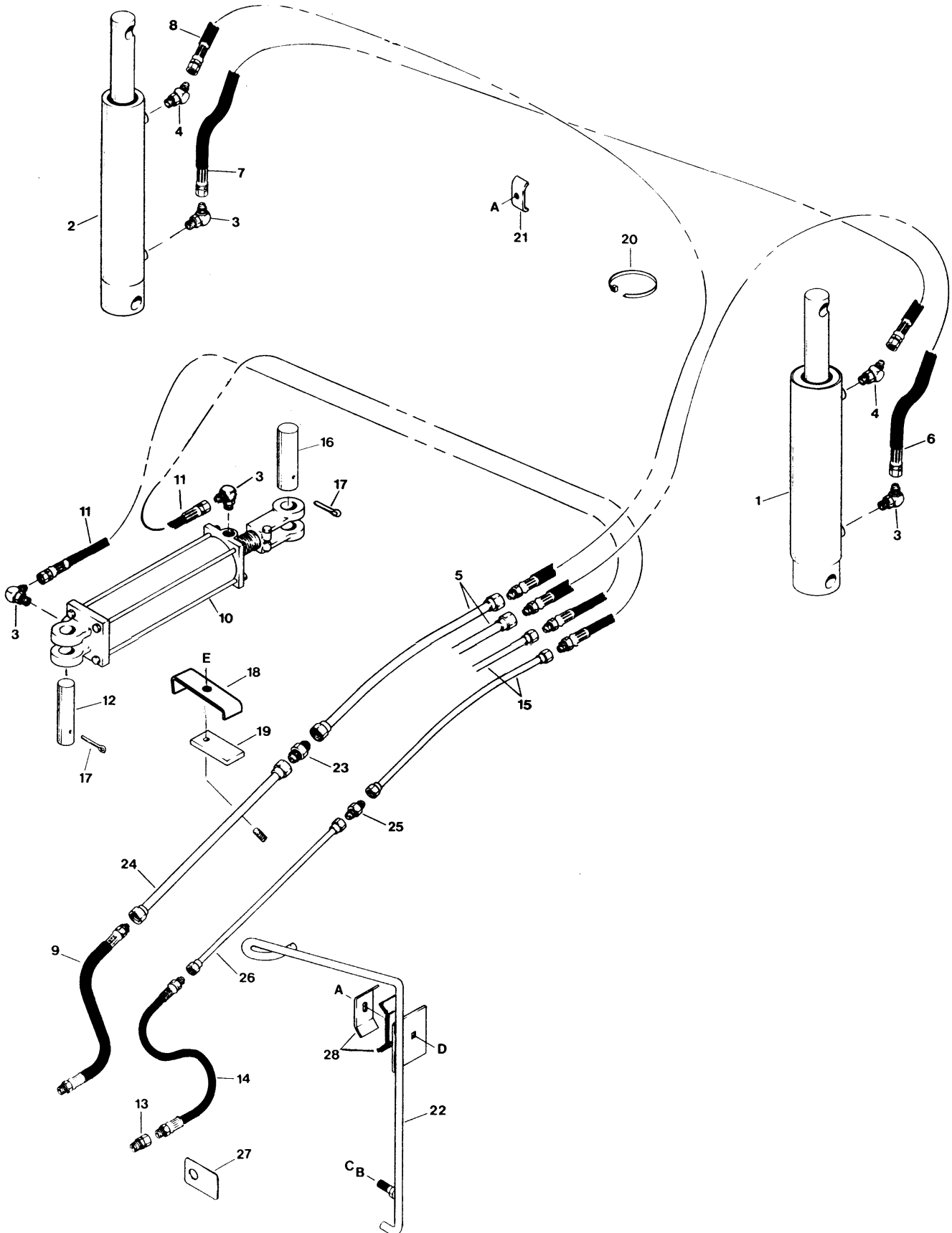
SKID SHOES



SKID SHOES

REF	PART NUMBER	DESCRIPTION	QTY	SERIAL NUMBER
1	140203	SHOE - skid, left.....	1	
2	41410	SHOE - skid, right.....	1	
3	41413	SHOE - skid, adjustable	2	
4	41417	ROD - skid shoe height adjustment.....	2	
5	13125	PIN - hair.....	2	
6	36627	SUPPORT - skid shoe, front.....	4	
	B 2149	KIT - skid shoes, adjustable (Contains two shoes 41413, complete with rods, pins, supports and hardware. Available through WholeGoods only.)		
A	19965	BOLT - round head square neck, 3/8 NC x 1 inch		
B	21452	NUT - serrated flange lock, 3/8 NC		
C	21468	BOLT - round head square neck, 7/16 NC x 1-3/4 inch		
D	18654	NUT - hex, 7/16 NC		

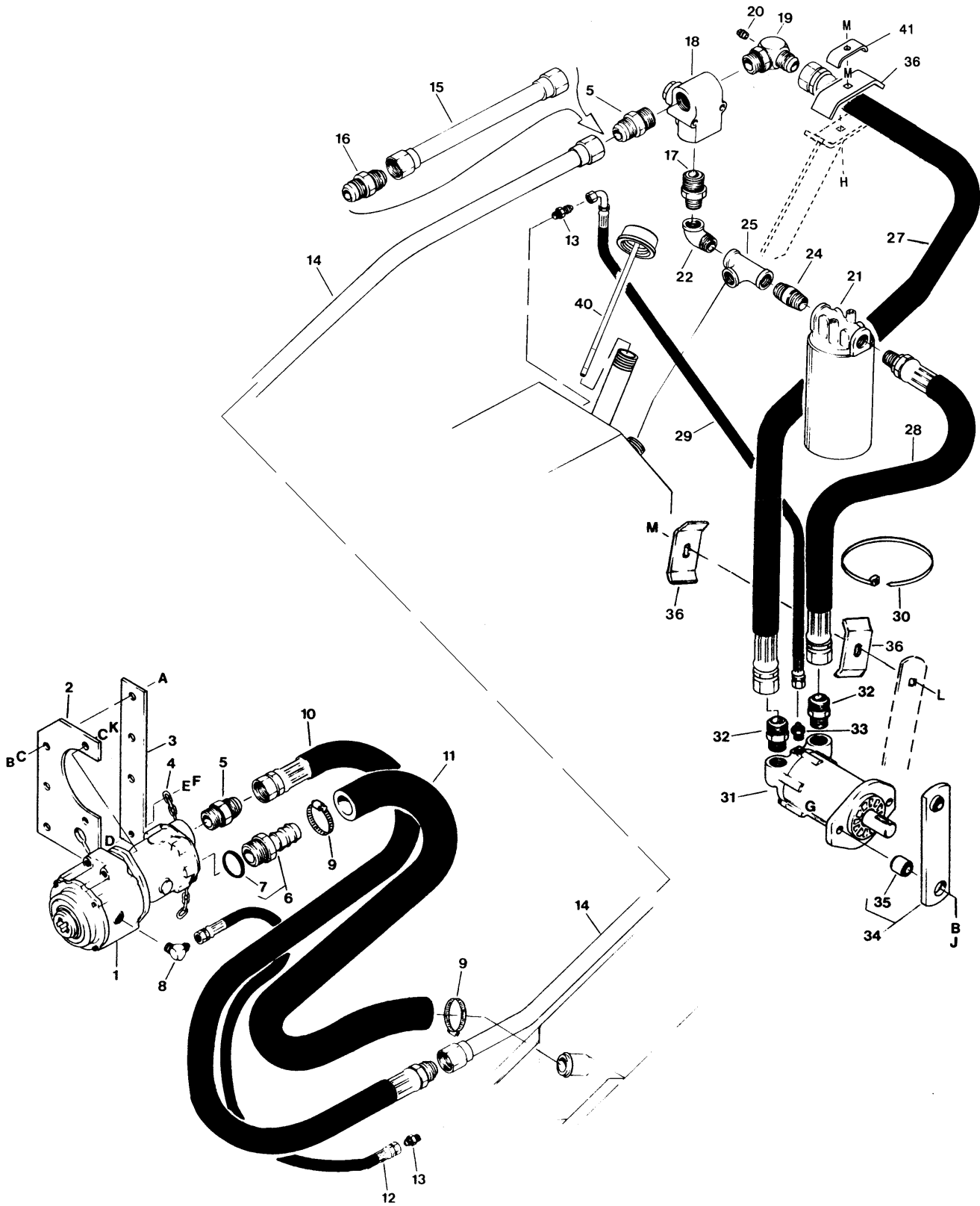
STEERING & LIFT CYLINDER HYDRAULICS



STEERING & LIFT CYLINDER HYDRAULICS

REF	PART NUMBER	DESCRIPTION	QTY	SERIAL NUMBER
1	41870	CYLINDER - lift, left side (master, 3.0" bore)	1	
	42125	SEAL KIT - for cylinder 41870	1	
2	41871	CYLINDER - lift, right side (slave, 2.5" bore).....	1	
	42126	SEAL KIT - for cylinder 41871 (2.5" bore)	1	
3	30282	FITTING - 90° elbow, 9/16 O-ring x 3/8 inch tube	4	
4	30284	FITTING - 45° elbow, 9/16 O-ring x 3/8 inch tube	2	
5	41907	LINE - hydraulic, lift, rear section - 12 ft. header	2	
	41908	LINE - hydraulic, lift, rear section - 14 ft. header	2	
	41909	LINE - hydraulic, lift, rear section - 16 ft. header	2	
6	41868	HOSE - line to left cylinder, 12 ft. header	1	
	41864	HOSE - line to left cylinder, 14 & 16 ft. header	1	
7	41860	HOSE - left to right cylinder, 12 ft. header.....	1	
	41861	HOSE - left to right cylinder, 14 & 16 ft. header	1	
8	41866	HOSE - right cylinder to line, 12 ft. header	1	
	41867	HOSE - right cylinder to line, 14 & 16 ft. header.....	1	
9	41859	HOSE - lift line to tractor.....	2	
10	41872	CYLINDER - steering	1	
	50165	SEAL KIT - for steering cylinder	1	
11	36845	HOSE - line to steering cylinder	2	
12	41707	PIN - steering cylinder, barrel end	1	
13	30377	RESTRICTOR - fitting, 0.052 inch diameter orifice	1	
14	36888	HOSE - to tractor	2	
15	41904	LINE - hydraulic, steering, rear section - 12 ft. header	2	
	41905	LINE - hydraulic, steering, rear section - 14 ft. header	2	
	41906	LINE - hydraulic, steering, rear section - 16 ft. header	2	
16	41708	PIN - steering cylinder, rod end	1	
17	18607	PIN - cotter, 5/32 x 1-1/2 inch	2	
18	100001	HOLDER - hydraulic line (quantity 5 for 12' header)	6	
19	36811	PAD - rubber (quantity 5 for 12' header).....	6	
20	21763	FASTENER - plastic tie	6	
21	32225	HOLDER - hose (quantity 9 for 12' header).....	11	
22	115705	GUIDE - hose	1	
23	30846	FITTING - union, 1/2 inch tube	2	
24	41909	LINE - hydraulic, lift, front section.....	2	
25	30375	FITTING - union, 3/8 inch tube	2	
26	41906	LINE - hydraulic, steering, front section.....	2	
27	41579	TAG - "Hitch Left"	1	
	41580	TAG - "Hitch Right"	1	
	41581	TAG - "Raise Header".....	1	
	41582	TAG - "Lower Header"	1	
28	24051	HOLDER - hose.....	2	
A	30228	NUT - lock, flange head, 3/8 NC distorted thread		
B	18638	WASHER - lock, 1/2 inch		
C	18591	NUT - hex, 1/2 NC		
D	30307	BOLT - round head, square neck, 3/8 NC x 3 inch		
E	18697	NUT - lock, 1/2 NC distorted thread		

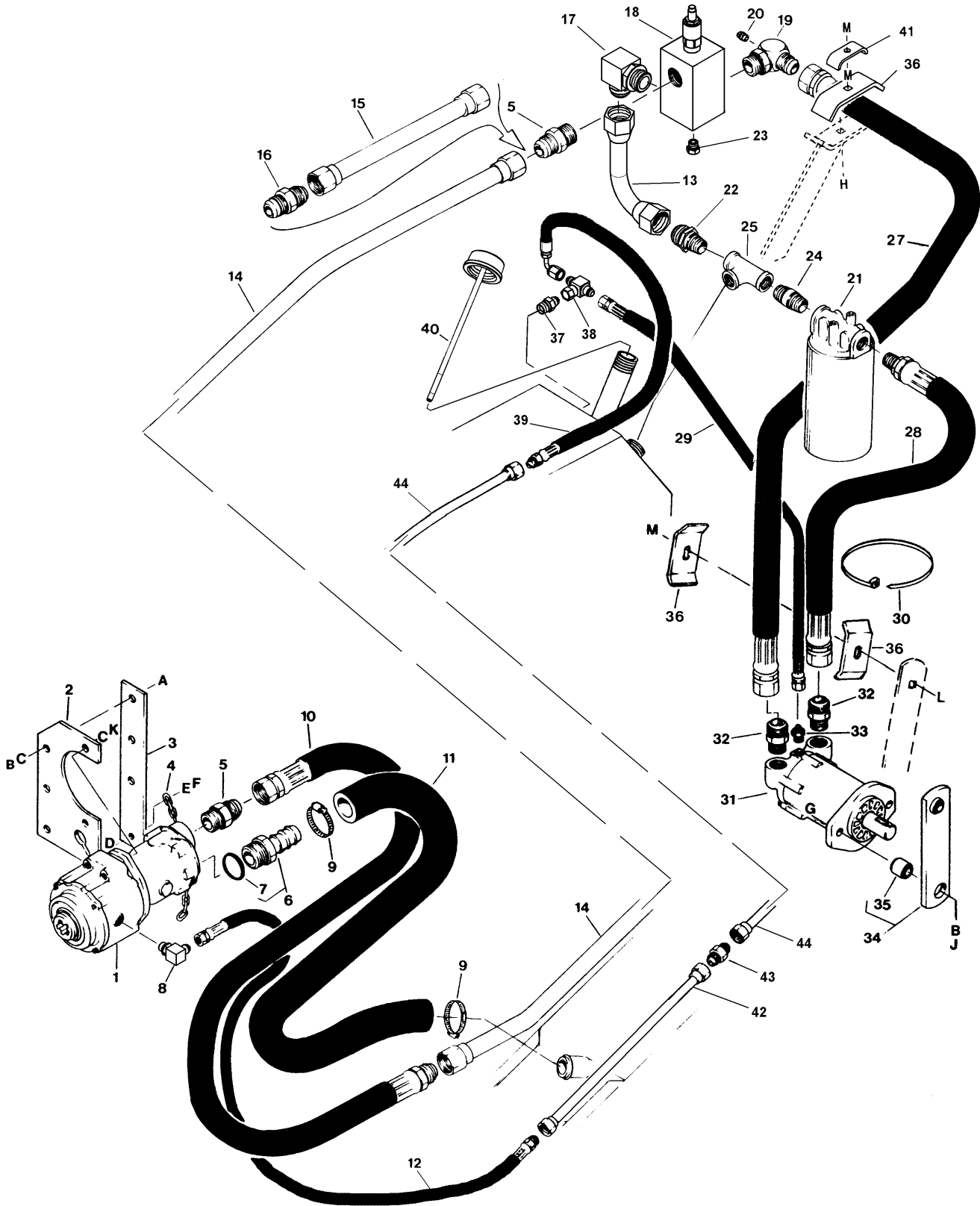
HEADER DRIVE HYDRAULICS SERIAL NO. 150558 AND BELOW



**HEADER DRIVE HYDRAULICS
SERIAL NO. 150558 AND BELOW**

REF	PART NUMBER	DESCRIPTION	QTY	SERIAL NUMBER
1	REF	PUMP/GEARBOX ASSEMBLY - see page 20	1	
2	41543	PLATE - pump	1	
3	41545	ARM - torque	1	
4	36880	CHAIN - 21 link	1	
5	21828	FITTING - adapter, 1-5/16 O-ring x 1 inch tube	2	
6	30910	FITTING - barbed, includes item 7, 1-5/8 O-ring x 1-1/4 ID hose	1	
7	30911	O-RING - for barbed fitting (30910)	1	
8	30927	FITTING - elbow, 9/16 O-ring x 1/4 inch tube	1	
9	17958	CLAMP - hose	2	
10	24042	HOSE - pressure, pump to line	1	
11	36842	HOSE - suction, reservoir to pump	1	
12	36868	HOSE - pump case drain	1	
13	21884	FITTING - adapter, 3/8 NPT x 1/4 inch tube	2	
14	41900	LINE - hydraulic, front section	1	
15	41901	LINE - hydraulic, rear section - 12 ft. header	1	
	41902	LINE - hydraulic, rear section - 14 ft. header	1	
	41903	LINE - hydraulic, rear section - 16 ft. header	1	
16	30968	FITTING - union, 1 inch tube	1	
17	30893	FITTING - adapter, 1-5/16 O-ring x 1 inch NPT	1	
18	36912	VALVE - relief, complete - 4000 psi	1	
	36913	CARTRIDGE - replacement, 4000 psi	1	
	36853	SEAL KIT - for relief valve 36912	1	
19	41663	FITTING - elbow, 1-5/16 O-ring x 1 inch tube, tapped	1	
20	6007	PLUG - pipe, 1/4 NPT	1	
21	30895	ELEMENT - hydraulic oil filter	1	
	30894	FILTER HEAD WITH ELEMENT - includes 30895	1	
22	21819	FITTING - street elbow, 1 inch NPT	1	
24	140369	FITTING - nipple, 1 inch NPT (was 21193)	1	
25	30891	FITTING - tee, 1 inch NPT	1	
27	36841	HOSE - pressure, relief valve to motor	1	
28	36840	HOSE - return, motor to tee	1	
29	36844	HOSE - motor case drain	1	
30	30753	FASTENER - plastic tie	AR	
31	36855	MOTOR - hydraulic	1	
	36856	SEAL KIT - for hydraulic motor	1	
32	21840	FITTING - adapter, 1-1/16 O-ring x 1 inch tube	2	
33	16227	FITTING - adapter, 9/16 O-ring x 1/4 inch tube	1	
34	41817	BAR - with bushings	1	
35	21810	BUSHING - rubber	2	
36	24051	HOLDER - hose	3	
40	115701	INDICATOR - oil level	1	
41	32225	HOLDER - hose	1	
A	21491	BOLT - hex head, 1/2 NC x 1-1/4 inch		
B	18591	NUT - hex, 1/2 NC		
C	18638	WASHER - lock, 1/2 inch		
D	20077	BOLT - hex head, 3/8 NC x 1 inch		
E	18598	WASHER - flat, 13/32 inch ID		
F	18669	NUT - lock, 3/8 NC distorted thread		
G	21760	BOLT - hex head, 1/2 NC x 2-1/2 inch		
H	18759	BOLT - hex head, 3/8 NC x 3-1/2 inch thread full length		
J	18697	NUT - lock, 1/2 NC distorted thread		
K	21565	BOLT - hex head, 1/2 NC x 1-3/4 inch		
L	30307	BOLT - round head, square neck, 3/8 NC x 3 inch		
M	30228	NUT - lock, smooth flange, 3/8 NC distorted thread		

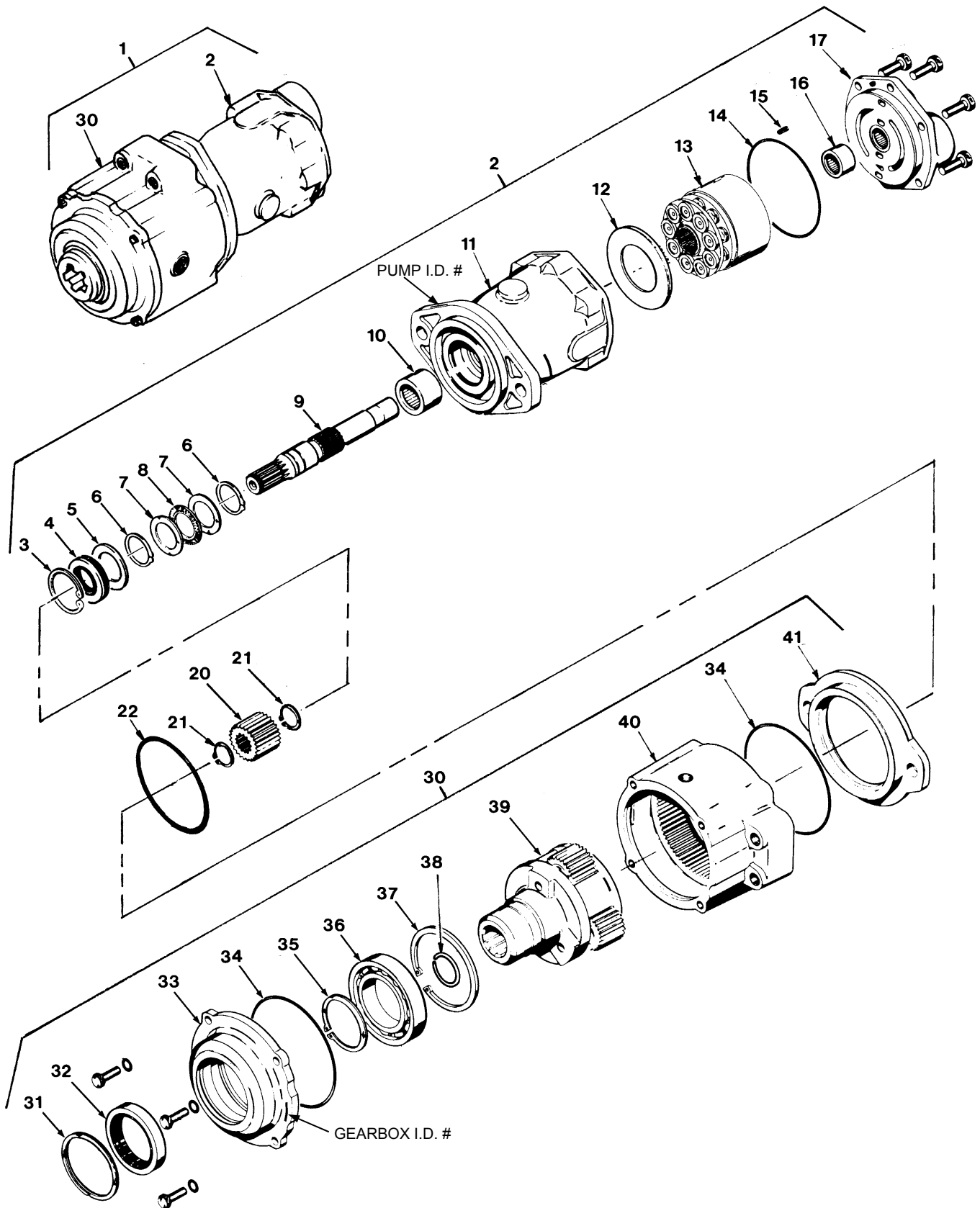
HEADER DRIVE HYDRAULICS SERIAL NO. 150559 AND ABOVE



HEADER DRIVE HYDRAULICS SERIAL NO. 150559 AND ABOVE

REF	PART NUMBER	DESCRIPTION	QTY	SERIAL NUMBER	
1	REF	PUMP/GEARBOX ASSEMBLY - see page 20.....	1		
2	41543	PLATE - pump.....	1		
3	41545	ARM - torque.....	1		
4	36880	CHAIN - 21 link	1		
5	21828	FITTING - adapter, 1-5/16 O-ring x 1 inch tube	2		
6	30910	FITTING - barbed, includes item 7, 1-5/8 O-ring x 1-1/4 ID hose	1		
7	30911	O-RING - for barbed fitting (30910).....	1		
8	30282	FITTING - elbow, 9/16 O-ring x 3/8 tube	1		
9	17958	CLAMP - hose.....	2		
10	24042	HOSE - pressure, pump to line	1		
11	36842	HOSE - suction, reservoir to pump	1		
12	140260	HOSE - pump case drain, to front of hitch	1		
13	140264	LINE - hydraulic, to relief valve.....	1		
14	41900	LINE - hydraulic, front section	1		
15	41901	LINE - hydraulic, rear section - 12 ft. header	1		
	41902	LINE - hydraulic, rear section - 14 ft. header	1		
	41903	LINE - hydraulic, rear section - 16 ft. header	1		
16	30968	FITTING - union, 1 inch tube.....	1		
17	21827	FITTING - elbow, 1-5/16 O-ring x 1 inch tube	1		
18	140271	VALVE - relief, complete - 4000 psi	1		
	140272	CARTRIDGE - replacement, 4000 psi.....	1		
	140273	SEAL KIT - for relief valve 140271	1		
19	41663	FITTING - elbow, 1-5/16 O-ring x 1 inch tube, tapped	1		
20	6007	PLUG - pipe, 1/4 NPT	1		
21	30895	ELEMENT - hydraulic oil filter	1		
	30894	FILTER HEAD WITH ELEMENT - includes 30895	1		
22	140274	FITTING - adapter, 1 inch tube x 1 inch NPT.....	1		
23	30994	FITTING - plug, 9/16 O-ring	1		
24	140369	FITTING - nipple, 1 inch NPT (was 21193).....	1		
25	30891	FITTING - tee, 1 inch NPT	1		
27	36841	HOSE - pressure, relief valve to motor	1		
28	36840	HOSE - return, motor to tee	1		
29	31805	HOSE - motor case drain	1		
30	30753	FASTENER - plastic tie.....	AR		
31	36855	MOTOR - hydraulic	1		
	36856	SEAL KIT - for hydraulic motor	1		
32	21840	FITTING - adapter, 1-1/16 O-ring x 1 inch tube	2		
33	15903	FITTING - adapter, 9/16 O-ring x 3/8 tube	1		
34	41817	BAR - with bushings.....	1		
35	21810	BUSHING - rubber	2		
36	24051	HOLDER - hose	3		
37	18880	FITTING - adapter, 3/8 NPT x 3/8 tube	1		
38	106724	FITTING - branch tee, 3/8 tube	1		
39	140261	HOSE - pump case drain, rear of hitch	1		
40	115701	INDICATOR - oil level	1		
41	32225	HOLDER - hose	1		
42	41907	LINE - hydraulic, pump case drain, front section - 12 ft. header	1		
	41908	LINE - hydraulic, pump case drain, front section - 14 ft. header	1		
	41909	LINE - hydraulic, pump case drain, front section - 16 ft. header	1		
43	30846	FITTING - union, 1/2 tube	1		
44	41909	LINE - hydraulic, pump case drain, rear section	1		
A	21491	BOLT - hex head, 1/2 NC x 1-1/4 inch	G	21760	BOLT - hex head, 1/2 NC x 2-1/2 inch
B	18591	NUT - hex, 1/2 NC	H	18759	BOLT - hex hd. 3/8 NC x 3-1/2" thrd. full
C	18638	WASHER - lock, 1/2 inch	J	18697	NUT - lock, 1/2 NC distorted thread
D	20077	BOLT - hex head, 3/8 NC x 1 inch	K	21565	BOLT - hex head, 1/2 NC x 1-3/4 inch
E	18598	WASHER - flat, 13/32 inch ID	L	30307	BOLT - md hd, square neck, 3/8 NC x 3"
F	18669	NUT - lock, 3/8 NC distorted thread	M	30228	NUT - lock, smth flange, 3/8 NC dist. thd.

PUMP/GEARBOX ASSEMBLY

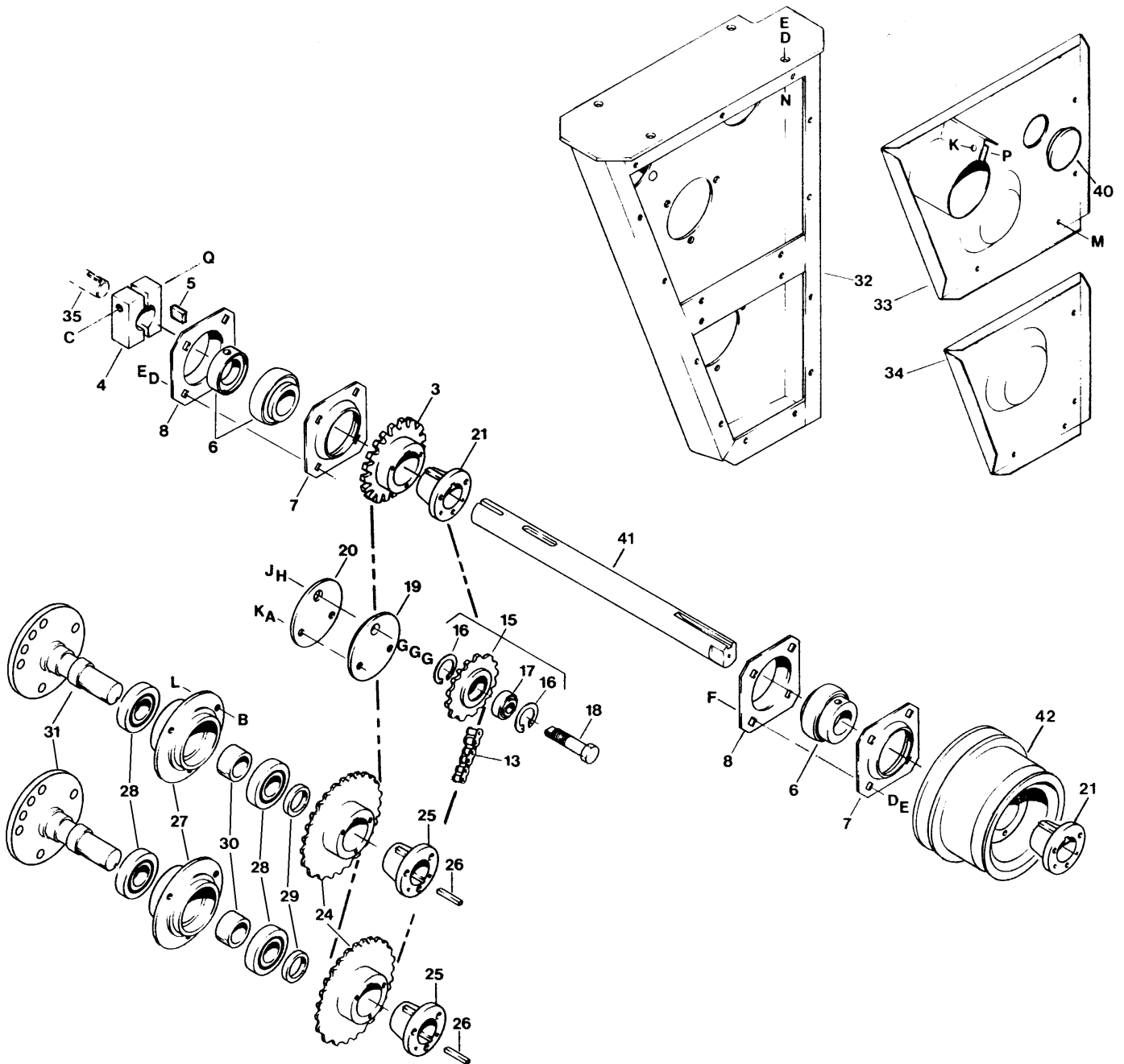


PUMP/GEARBOX ASSEMBLY

REF	PART NUMBER	DESCRIPTION	QTY	SERIAL NUMBER
1	36909	PUMP/GEARBOX ASS'Y. - 540 RPM, incl. items 2, 20 to 22, and 30.....	1	
	36859	PUMP/GEARBOX ASS'Y. - 1000 RPM, incl. items 2, 20 to 22, and 30.....	1	
<u>PISTON PUMP COMPONENTS</u>				
2	36882	PUMP - piston, 540 RPM - includes items 3 to 17 (Eaton 73428 LA_).....	1	
	36891	PUMP - piston, 1000 RPM - includes items 3 to 17 (Eaton 73424 LA_).....	1	
3	18900 *	RING - retaining, outer.....	1	
4	50217 *	SEAL - shaft (was 30046).....	1	
5		WASHER - flat, 1-19/32 x 2 x 5/64 inch.....	1	
6	30144 *	RING - retaining.....	2	
7	30140	BEARING RACE - thrust.....	2	
8	30141	BEARING - thrust.....	1	
9		SHAFT - drive.....	1	
10	21420	BEARING - needle, housing.....	1	
11		HOUSING ASSEMBLY 540 RPM (2.77 cu.in./rev. displacement).....	1	
		HOUSING ASSEMBLY 1000 RPM (2.01 cu.in./rev. displacement).....	1	
12		INSERT - cam plate.....	1	
13		ROTATING ASSEMBLY.....	1	
14	30045 *	O-RING - housing to back plate.....	1	
15		ROLL PIN.....	1	
16		BEARING - needle, back plate (Torrington B-1412).....	1	
17		BACK PLATE ASSEMBLY.....	1	
*	30247	SEAL KIT - for piston pump, includes items marked *		
<u>CONNECTING COMPONENTS</u>				
20	50099	SUN GEAR - 540 RPM, pump to gear box connection.....	1	
	50100	SUN GEAR - 1000 RPM, pump to gear box connection.....	1	
21	5924	RING - retaining, sun gear.....	2	
22	30045	O-RING - pump to gear box connection.....	1	
<u>GEARBOX COMPONENTS</u>				
30	36883	GEARBOX - 540 RPM - includes items 31 to 41 (Eaton 77020_ _).....	1	
	36892	GEARBOX - 1000 RPM - includes items 31 to 41 (Eaton 77030_ _).....	1	
31		+ RING - retaining, internal 3 inch.....	1	
32		+ SEAL - shaft.....	1	
33		PLATE - front.....	1	
34		+ O-RING - housing to front plate and housing to adapter plate.....	2	
35		+ RING - retaining, external 2-5/32 inch.....	1	
36	50208	BEARING - carrier.....	1	
37		+ RING - retaining, internal 3-9/16 inch.....	1	
38		+ RING - lock.....	1	
39	36942	CARRIER ASSEMBLY - 540 RPM.....	1	
	36943	CARRIER ASSEMBLY - 1000 RPM.....	1	
40		HOUSING.....	1	
41		PLATE - adapter.....	1	
+	36854	SEAL KIT - for gearbox, includes items marked +		

Pump & Gearbox Matching – Pump (item 2) and gearbox (item 30) must be properly matched for 540 or 1000 rpm. If problems arise related to RPM (sickle plugging, vibration etc.), check that components are matched as follows:
 540 RPM: Pump 73428 LA_ with Box 77020_ _
 1000 RPM: Pump 73424 LA_ with Box 77030_ _
 Model numbers are stamped on the pump mounting flange and the gearbox front plate.

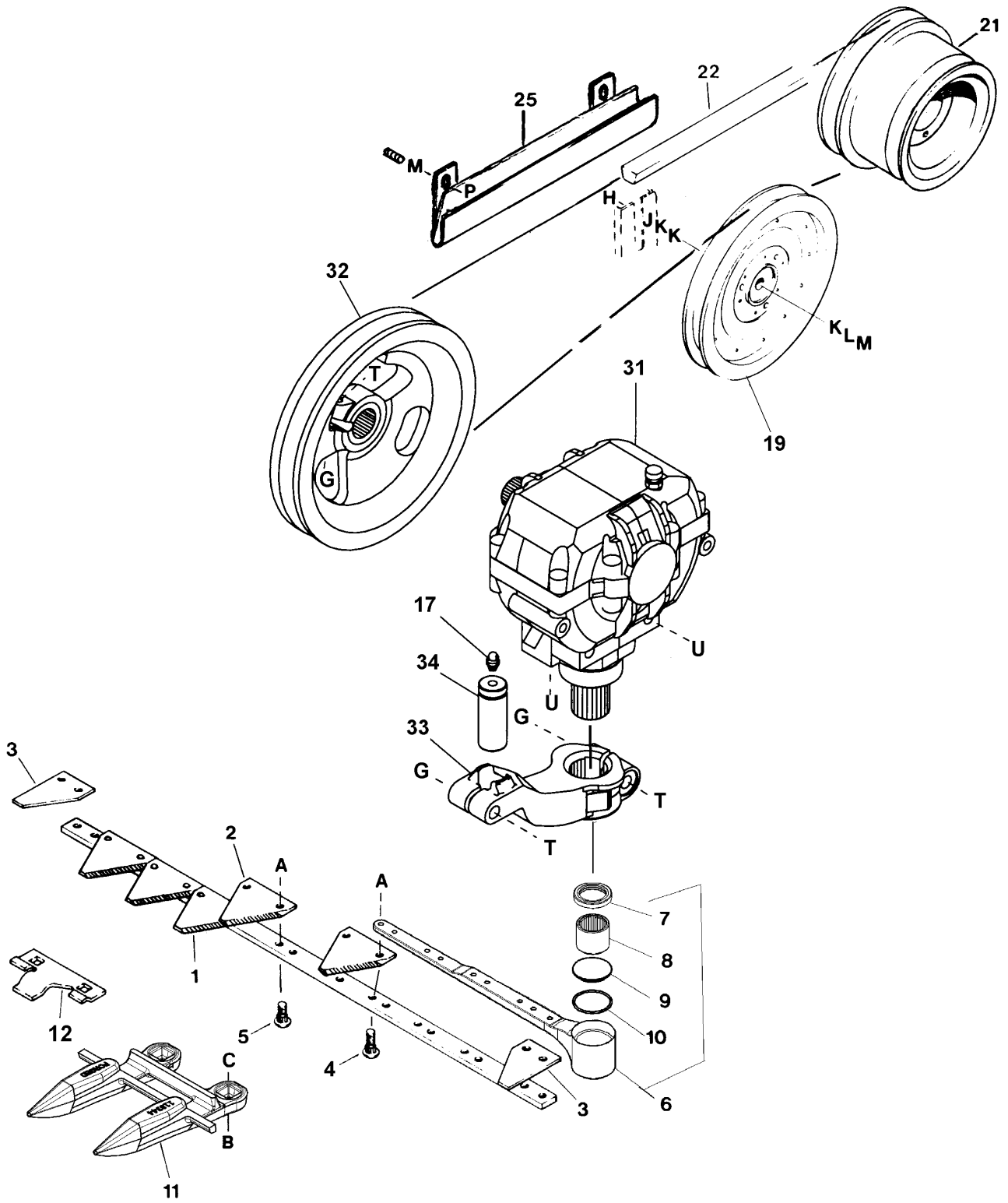
HEADER PRIMARY DRIVE



HEADER PRIMARY DRIVE

REF	PART NUMBER	DESCRIPTION	QTY	SERIAL NUMBER
3	19117	SPROCKET - driver, rolls	1	
4	36819	CLAMP HALF - drive shaft to motor shaft	2	
5	115698	KEY - 1/4 x 1/2 x 13/16 inch	1	
6	30031	BEARING - ball, with lock collar	2	
7	30576	FLANGE - bearing	2	
8	41034	FLANGE - bearing, with lube fitting	2	
13	41806	CHAIN - roller, roll drive, #60H x 85 pitches plus connector link	1	
		(Use Genuine MacDon part only.)		
15	9333	SPROCKET ASSEMBLY - idler, includes items 16 & 17	1	
16	795	RING - retaining, internal	2	
17	9213	BEARING - ball	1	
18	41454	BOLT - special	1	
19	41455	DISC - inner, chain tightener	1	
20	41456	DISC - outer, chain tightener	1	
21	30256	BUSHING - split taper, with outer/inner key	2	
24	28496	SPROCKET - roll drive	2	
25	115074	BUSHING - split taper, with outer key (was 21934)	2	
26	26846	KEY - 5/16 square x 1-1/2 inch	2	
27	41844	HUB - bearing	2	
28	14911	BEARING - ball	4	
29	41841	BUSHING - steel	2	
30	41850	SPACER	2	
31	115898	SHAFT - roll drive	2	
32	41830	HOUSING - drive	1	
33	41824	COVER - upper	1	
34	41821	COVER - lower	1	
35	REF	MOTOR - hydraulic, see "Header Drive Hydraulics"	1	
40	140240	PLUG - plastic	1	
41	41992	SHAFT - drive, 12 ft. header	1	
	41993	SHAFT - drive, 14 ft. header	1	
	41994	SHAFT - drive, 16 ft. header	1	
42	41924	PULLEY - driver, auger and sickle	1	
A	18637	WASHER - lock, 3/8 inch		
B	20077	BOLT - hex head, 3/8 NC x 1 inch		
C	30011	BOLT - hex head, 1/2 NC x 3-1/4 inch		
D	18638	WASHER - lock, 1/2 inch		
E	18591	NUT - hex, 1/2 NC		
F	21575	BOLT - hex head, 1/2 NC x 1 inch		
G	18600	WASHER - flat, 21/32 inch ID		
H	18639	WASHER - lock, 5/8 inch		
J	18592	NUT - hex, 5/8 NC		
K	21567	BOLT - hex head, 3/8 NC x 3/4 inch		
L	21452	NUT - serrated flange, 3/8 NC		
M	21055	SCREW - self tapping, 1/4 NC x 1/2 inch		
N	21491	BOLT - hex head, 1/2 NC x 1-1/4 inch		
P	18669	NUT - lock, 3/8 NC distorted thread		
Q	18697	NUT - lock, 1/2 NC distorted thread		

SICKLE AND BELT DRIVE



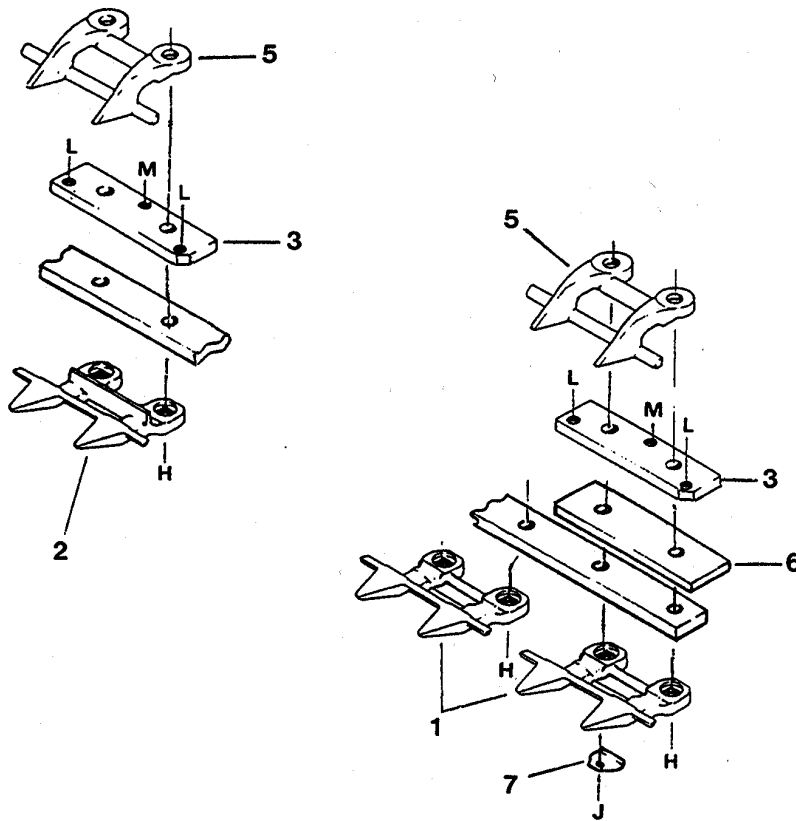
SICKLE AND BELT DRIVE

REF	PART NUMBER	DESCRIPTION	QTY	SERIAL NUMBER
1	34181	SICKLE ASSEMBLY - bolted sections, less head, 12 ft.....	1	
	34182	SICKLE ASSEMBLY - bolted sections, less head, 14 ft.....	1	
	34183	SICKLE ASSEMBLY - bolted sections, less head, 16 ft.....	1	
2	34390	SECTION - sickle, over-serrated (Kondex)	see note (1)	
	118475	SECTION – sickle, over-serrated (Busatis)	OPT	
3	34391	SECTION - half, left and right end.....	2	
4	30668	SCREW - button head, ribbed neck #12 NC x 1 inch.....	9	
5	30696	SCREW - button head, ribbed neck #12 NC x 5/8 inch.....	see note (2)	
6	115321	HEAD - sickle, includes items 7, 8, 9 & 10	1	
7	113222	SEAL - sickle head (install with lip facing outwards)	1	
8	100500	BEARING - needle, sickle head	1	
9	113937	PLUG - sickle head.....	1	
10	115670	O-RING – sickle head.....	1	
11	118345	SPECIAL SICKLE GUARD - first three at left end only (was 28014)	3	
	118344	SICKLE GUARD - used at all other positions (was 28013)	see note (3)	
12	28815	GUIDE - sickle	see note (4)	
17	21194	FITTING - lube, 90°	1	
19	21862	PULLEY - idler, back-side	1	
21	REF	PULLEY - driver, see "Header Primary Drive", page 23.....	1	
22	9530	BELT - sickle drive.....	1	
25	41424	GUIDE - belt	1	
31	REF	DRIVE – sickle, see “Sickle Drive”, page 29	1	
32	47832	PULLEY - driven.....	1	
33	113698	ARM – output.....	1	
34	113229	PIN – sickle head.....	1	
A	30669	NUT - lock, #12 NC distorted thread		
B	21468	BOLT - round head square neck, 7/16 NC x 1-3/4 inch - thru guard, guide & shoe support		
	8218	BOLT - round head square neck, 7/16 NC x 1-1/2 inch - thru guard & guide		
C	18654	NUT - hex, 7/16 NC		
G	18666	NUT - lock, 5/8 NC distorted thread		
H	30027	BOLT - round head square neck, 1/2 NC x 2-1/4 inch		
J	18600	WASHER - flat, 21/32 inch ID		
K	18599	WASHER - flat, 17/32 inch ID - use as required for idler alignment		
L	18638	WASHER - lock, 1/2 inch		
M	18591	NUT - hex, 1/2 NC		
P	21383	NUT - serrated flange lock, 1/2 NC		
T	21583	BOLT – hex head, 5/8 NC x 3 inch		
U	100233	BOLT – hex head, 5/8 NC x 1-1/2 inch		

NOTES:

- (1) - Quantities: 12 ft = 49, 14 ft = 57, 16 ft = 65
(2) - Quantities: 12 ft = 93, 14 ft = 109, 16 ft = 125
(3) - Quantities: 12 ft = 22, 14 ft = 26, 16 ft = 30
(4) - Quantities: 12 ft = 22, 14 ft = 26, 16 ft = 30

SICKLE STUB GUARDS (OPTION)



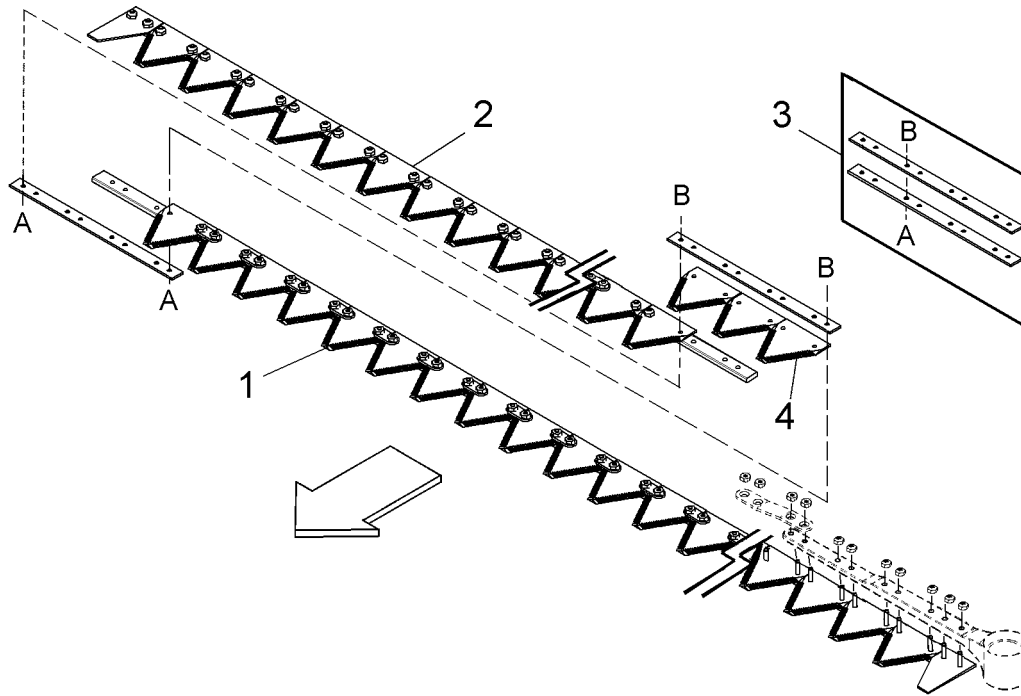
REF	PART NUMBER	DESCRIPTION	QTY	SERIAL NUMBER
	B 2515	STUB GUARD CONVERSION KIT - 12' Header, complete		
	B 2516	STUB GUARD CONVERSION KIT - 14' Header, complete		
	B 2517	STUB GUARD CONVERSION KIT - 16' Header, complete		
		Kits available through WholeGoods only		
1	118347	SPECIAL END GUARD - no trash bar, first three positions at L/H end (was 34975)	3	
2	118346	GUARD - stub (was 34974)		see note (1)
3	34980	BAR - adjuster		see note (2)
5	34359	GUIDE - sickle		see note (2)
6	47324	BAR - spacer	1	
7	REF	CLIP - skid shoe front support		
H	30862	BOLT - round head, square neck, 7/16 NC x 2-1/2 inch (used at all guards except at skid shoe clips)		
J	21665	BOLT - round head, square neck, 7/16 NC x 2-3/4 inch (used at skid shoe clips)		
L	50119	BOLT - hex head, 3/8 NC x 3/4 inch, stainless steel		
M	50120	BOLT - hex head, 3/8 NC x 1 inch, stainless steel		

NOTES:

(1) - Quantities: 12' = 22, 14' = 26, 16' = 30

(2) - Quantities: 12' = 25, 14' = 29, 18' = 33

SEGMENTED SICKLE



NOTE: A total of 4 special guards are required with head segments, as they have a slightly wider back than production sickles. Install 4 of item 11, from page 25 to prevent premature sickle failure.

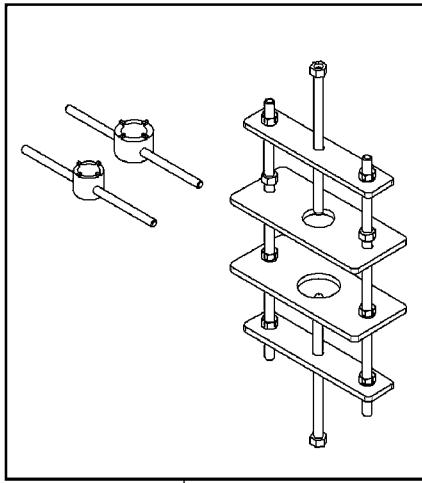
FINE SICKLES (ONLY) – COMPLETE

NOTE: For a complete single sickle, you will need:

12'	Item 1	129000	Left, head seg.	Qty. 1
	Item 2	129006	Right, tail seg.	Qty. 1
	Item 3	129043	MacDon Splice Kit	Qty. 1
	Item 4	34390	Section	Qty. 3
14'	Item 1	129000	Left, head seg.	Qty. 1
	Item 2	129007	Right, tail seg.	Qty. 1
	Item 3	129043	MacDon Splice Kit	Qty. 1
	Item 4	34390	Section	Qty. 3
16'	Item 1	129000	Left, head seg.	Qty. 1
	Item 2	129008	Right, tail seg.	Qty. 1
	Item 3	129043	MacDon Splice Kit	Qty. 1
	Item 4	34390	Section	Qty. 3

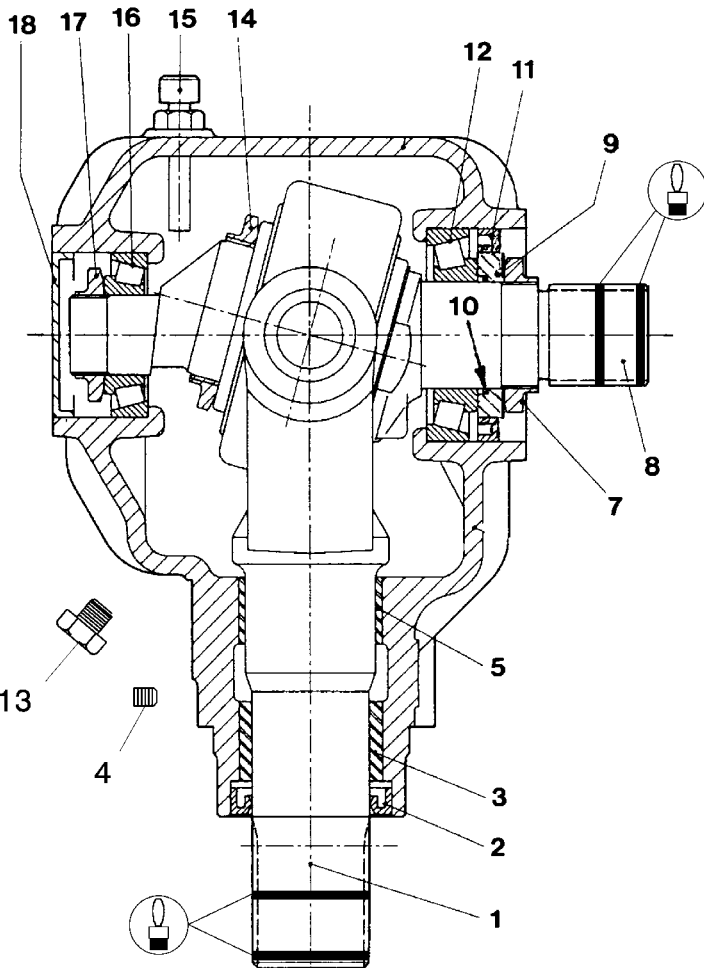
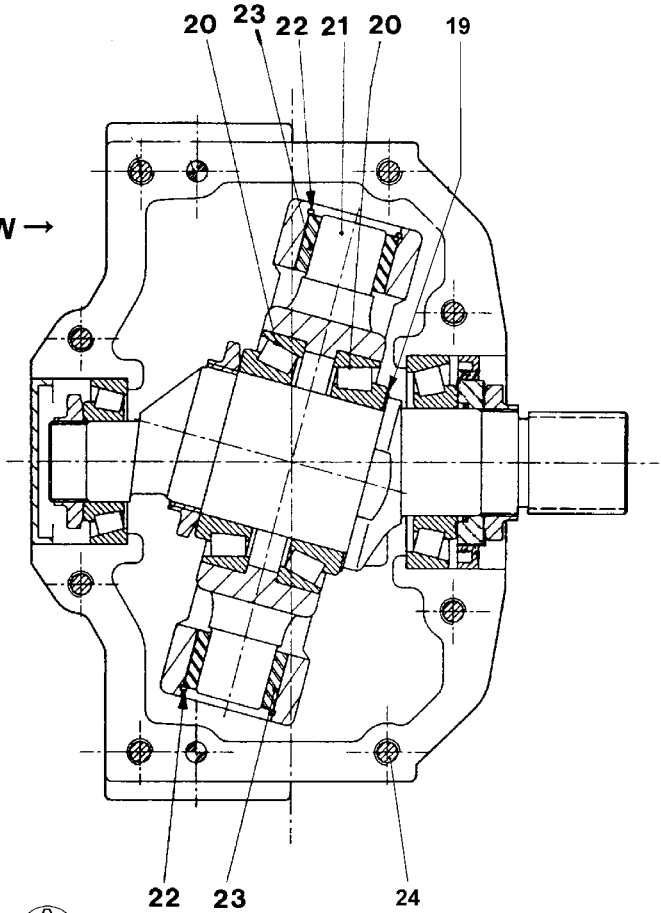
A	129299	SCREW - 90° csk skt hd, #12-24 NC x 0.812"
B	30669	NUT -csk, center lock, #12-24 NC

SICKLE DRIVE BOX



25

TOP VIEW →



← SIDE VIEW

103673

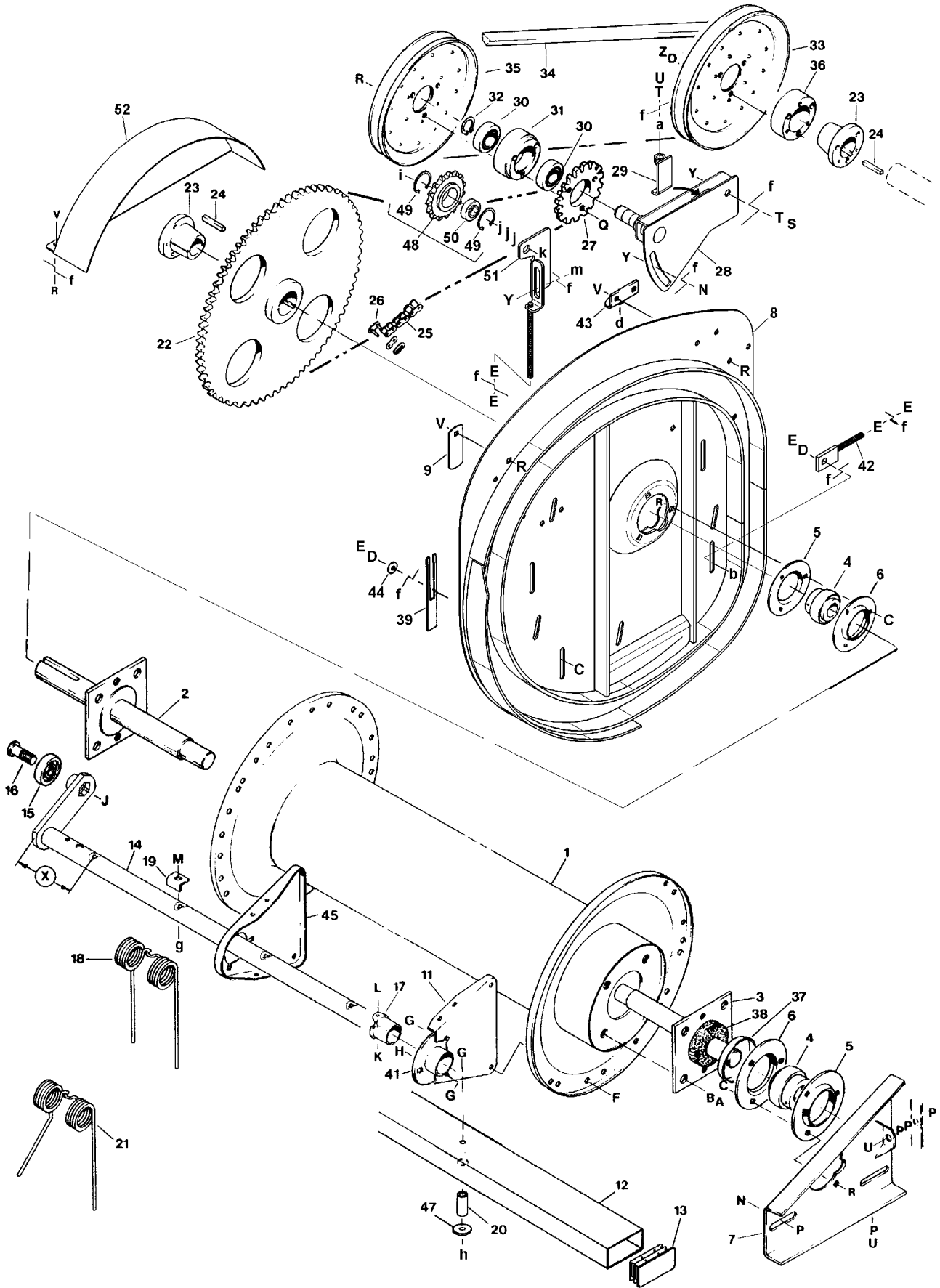
SICKLE DRIVE BOX

REF	PART NUMBER	DESCRIPTION	QTY	SERIAL NUMBER
	100532	DRIVE - sickle, complete	1	
1	100706	YOKE - output	1	
2	100707	SEAL - oil, output shaft	1	
3	100708	BUSHING - bronze	1	
4	103565	PLUG - hex socket	2	
5	100726	BUSHING - steel	1	
7	100709	NUT - special	1	
8	100710	SHAFT - input	1	
9	102629	SPACER - 60 mm O.D.	1	
10	100712	O-RING	1	
11	102630	SEAL - oil, input shaft, 60 mm I.D.	1	
12	100714	BEARING ASSEMBLY - cup & cone	1	
13	103096	PLUG - oil drain	2	
14	100715	NUT - lock, M55 x 2	1	
15	100716	BREATHER PLUG - with dipstick	1	
16	100717	BEARING ASSEMBLY - cup & cone	1	
17	100718	NUT - lock, M30 x 1.5	1	
18	100719	CAP - dust	1	
19	113152	SHIM - input shaft	1	
20	100720	BEARING ASSEMBLY - cup & cone	2	
21	100721	PIVOT	1	
22	100722	RING - retaining, internal	2	
23	100723	BUSHING - bronze	2	
24	113153	BOLT - socket head, M10 x 50 mm	8	
25	139003	TOOL KIT - sickle drive box disassembly/assembly	A/R	



REF Apply Loctite 243 adhesive or equivalent to splines before assembly

REEL & DRIVE



REEL & DRIVE

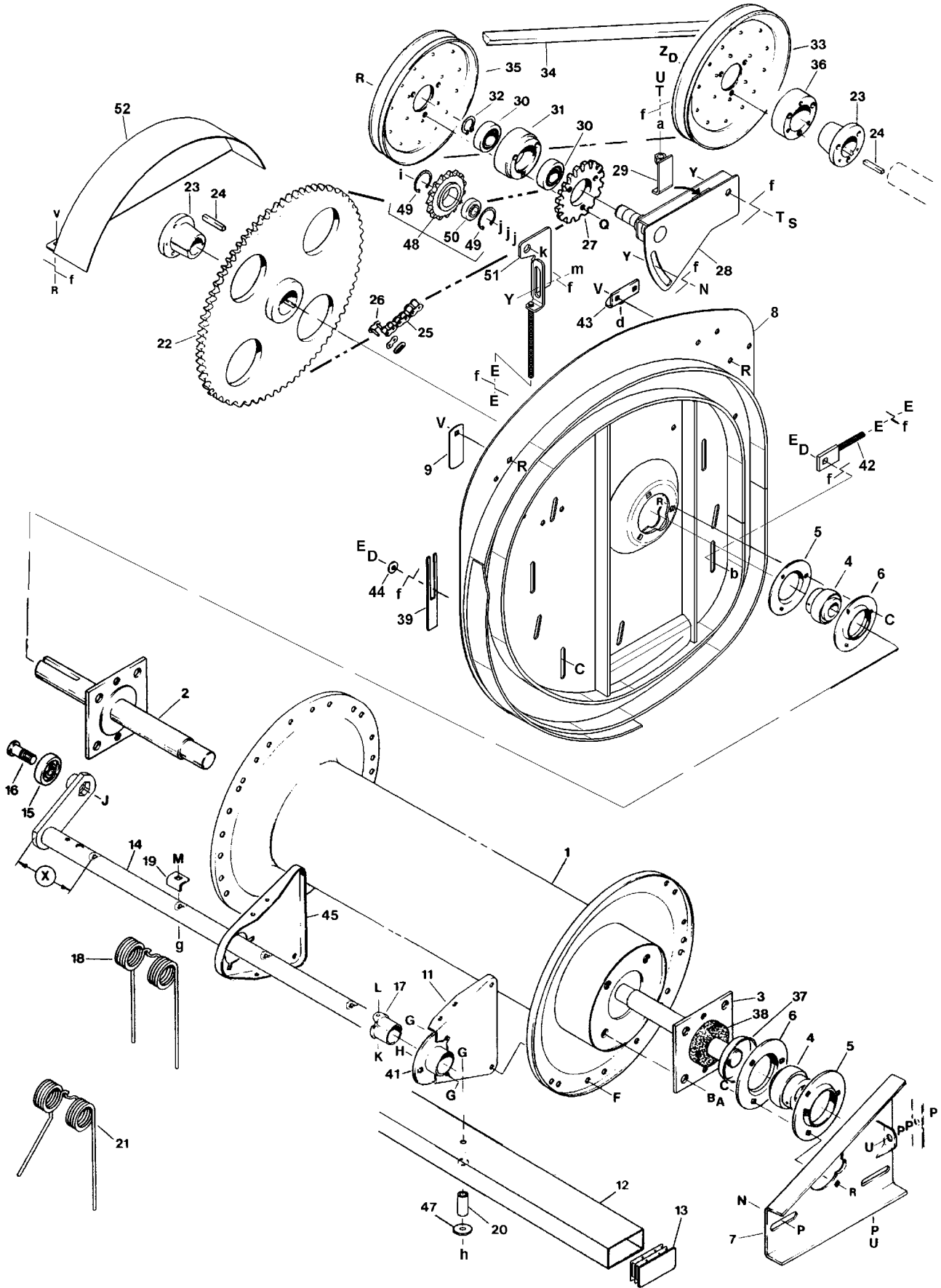
REF	PART NUMBER	DESCRIPTION	QTY	SERIAL NUMBER
1	41717	TUBE - reel, 12 ft. header.....	1	
	41718	TUBE - reel, 14 ft. header.....	1	
	41719	TUBE - reel, 16 ft. header.....	1	
2	41734	SHAFT - reel drive, right hand.....	1	
3	41730	SHAFT - reel drive, left hand.....	1	
4	21936	BEARING - ball, with lock collar.....	2	
5	30603	FLANGE - bearing, with lube fitting.....	2	
6	30602	FLANGE - bearing.....	2	
7	41439	SUPPORT - reel, left hand.....	1	
8	140096	CAM PLATE - reel.....	1	
9	47418	COVER - cam bearing access.....	1	
11	47300	• ARM - reel.....	see note (1)	
12	115551	• BAT - reel, 12 ft. header.....	5	
	115552	• BAT - reel, 14 ft. header.....	5	
	115553	• BAT - reel, 16 ft. header.....	5	
13	115134	• PLUG - plastic, bat ends.....	10	
14	140215	• TUBE - finger, 12 ft. header, dimension "X" = 4-1/2 in. (113 mm).....	3	
	140217	• TUBE - finger, 14 ft. header, dimension "X" = 4-1/2 in. (113 mm).....	3	
	140219	• TUBE - finger, 16 ft. header, dimension "X" = 4-1/2 in. (113 mm).....	3	
	140216	TUBE - finger, 12 ft. header, dimension "X" = 6-5/16 in. (161 mm).....	2	
	140218	TUBE - finger, 14 ft. header, dimension "X" = 6-5/16 in. (161 mm).....	2	
	140220	TUBE - finger, 16 ft. header, dimension "X" = 6-5/16 in. (161 mm).....	2	
15	21940	• BEARING - cam follower.....	5	
16	28346	• BOLT - special, cam follower.....	5	
17	28790	• BUSHING - plastic, reel arm.....	see note (2)	
18	47681	• FINGER - pick-up, double (5 coil, .250" dia. wire).....	see note (3)	
19	19183	• HOLDER - finger.....	see note (4)	
20	103650	• SPACER - bat stiffening.....	see note (2)	
21	47680	• FINGER - right end (5 coil, .250" dia. wire).....	3	
22	36796	SPROCKET - reel drive.....	1	
23	115074	BUSHING - split taper.....	2	
24	17194	KEY - 5/16 square x 2 inch.....	2	
25	140105	CHAIN - roller, reel drive.....	1	
26	16659	LINK - connector.....	1	
27	41884	SPROCKET - reel driver.....	1	
28	140041	ARM - reel drive.....	1	
29	140046	BRACKET - tensioning.....	1	
30	21062	BEARING - ball.....	2	
31	41891	HUB - pulley, at drive arm.....	1	
32	18898	RING - retaining, external.....	1	
33	41887	PULLEY - reel drive, 10-1/2 inch O.D. (267 mm).....	1	
34	36012	BELT - reel drive.....	1	
35	41886	PULLEY - reel drive, 9-1/2 inch O.D. (241 mm).....	1	
36	41890	HUB - pulley, at auger shaft.....	1	
37	41794	COVER - bearing.....	1	
38	41793	SEAL - rubber.....	1	

NOTES:

- (1) - Quantities: 12 ft = 10, 14 ft = 15, 16 ft = 15
(2) - Quantities: 12 ft = 15, 14 ft = 20, 16 ft = 20
(3) - Quantities: 12 ft = 87, 14 ft = 102, 16 ft = 117
(4) - Quantities: 12 ft = 90, 14 ft = 105, 16 ft = 120

- Reel Bat Replacement Kit - includes all items marked • on pages 31 & 33 in proper size and quantity for one complete bat. (Kits available through WholeGoods only).
B2890 - Bat Assembly - complete - 12' Header
B2891 - Bat Assembly - complete - 14' Header
B2892 - Bat Assembly - complete - 16' Header

REEL & DRIVE



REEL & DRIVE

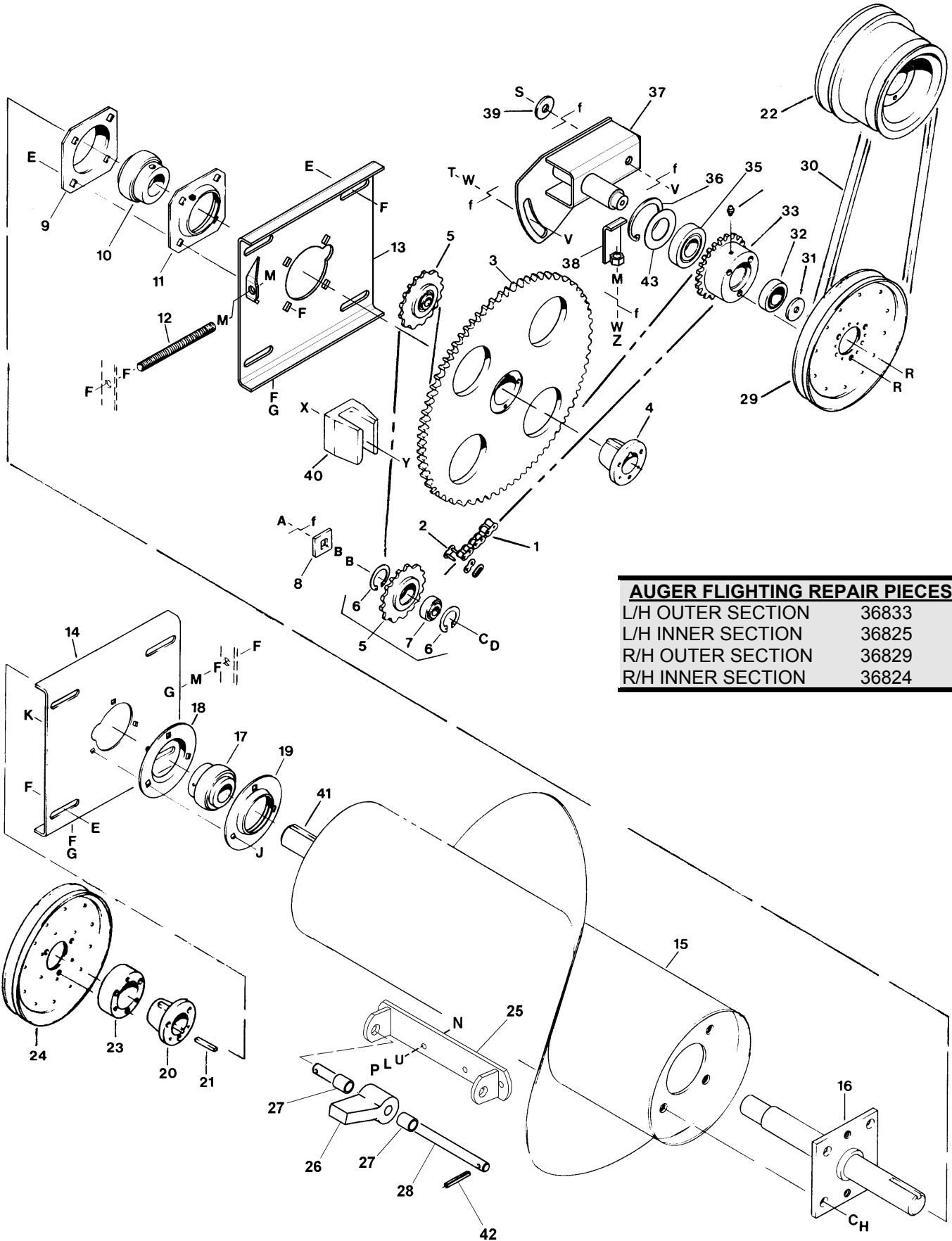
REF	PART NUMBER	DESCRIPTION	QTY	SERIAL NUMBER
39	16837	BAR - spacer, use to square cam plate to reel	AR	
41	47295	• DISC - reel bushing	see note (2)	
42	140073	STUD - reel fore-aft adjustment.....	1	
43	115574	ANGLE - cam vertical adjustment	2	
44	20535	WASHER - flat.....	3	
45	34752	• ARM - reel, right hand end of each bat.....	5	
47	103837	• WASHER - flat.....	see note (2)	
48	9333	SPROCKET ASSEMBLY - idler, includes items 49 & 50	1	
49	795	RING - retaining.....	2	
50	9213	BEARING - ball.....	1	
51	140039	BRACKET – idler sprocket	1	
52	140055	SHIELD – reel drive sprocket	1	
A	21594	BOLT - hex head, 5/8 NC x 1-1/2 inch		
B	18639	WASHER - lock, 5/8 inch		
C	19965	BOLT - round head square neck, 3/8 NC x 1 inch		
D	18637	WASHER - lock, 3/8 inch		
E	18590	NUT - hex, 3/8 NC		
F	21755	• BOLT - hex flange head, 5/16 NC x 1/2 inch		
G	30280	• NUT - lock, smooth flange, 5/16 NC distorted thread		
H	21281	• BOLT - round head square neck, 5/16 x 3/4 inch		
J	21941	• NUT - hex jam, 5/8 NC distorted thread		
K	21570	• BOLT - hex head, 1/4 NC x 2 inch		
L	18724	• NUT - lock, 1/4 NC distorted thread		
M	21488	• BOLT - round head square neck, 5/16 NC x 1-3/4 inch		
N	21868	BOLT - round head square neck, 1/2 NC x 1 inch		
P	21383	NUT - serrated flange lock, 1/2 NC		
Q	21102	BOLT - hex head, 3/8 NC x 2-1/2 inch		
R	30228	NUT - lock, smooth flange, 3/8 NC distorted thread		
S	21578	BOLT – hex head, 1/2 NC x 2-1/4 inch		
T	18599	WASHER - flat, 17/32 inch I.D.		
U	30528	BOLT - hex head, 1/2 NC x 3-1/2 inch, thread full length		
V	21863	BOLT - round head square neck, 3/8 NC x 3/4 inch		
Y	50186	NUT - lock, smooth flange, 1/2 NC distorted thread		
Z	20077	BOLT - hex head, 3/8 NC x 1 inch		
a	18591	NUT – hex, 1/2 NC		
b	19966	BOLT - round head, square neck, 3/8 NC x 1-1/4 inch		
d	21672	BOLT - hex head, 1/2 NC x 3 inch thread full length		
f	REF	Indicates where hardware passes through frame member		
g	18690	• NUT – lock, 5/16 NC distorted thread		
h	21569	• BOLT – hex head, 5/16 NC x 2 inch		
i	21587	BOLT – hex head, 5/8 NC x 2 inch		
j	18600	WASHER – flat, 21/32 inch I.D.		
k	18666	NUT – lock, 5/8 NC distorted thread		
m	21560	BOLT – hex head, 1/2 NC x 3 inch		

NOTES:

(2) - Quantities: 12 ft = 15, 14 ft = 20, 16 ft = 20

- Reel Bat Replacement Kit – includes all items marked • on pages 31 & 33 in proper size and quantity for one complete bat. (Kits available through WholeGoods only).
B2890 – Bat Assembly – complete – 12' Header
B2891 – Bat Assembly – complete – 14' Header
B2892 – Bat Assembly – complete – 16' Header

AUGER & DRIVE

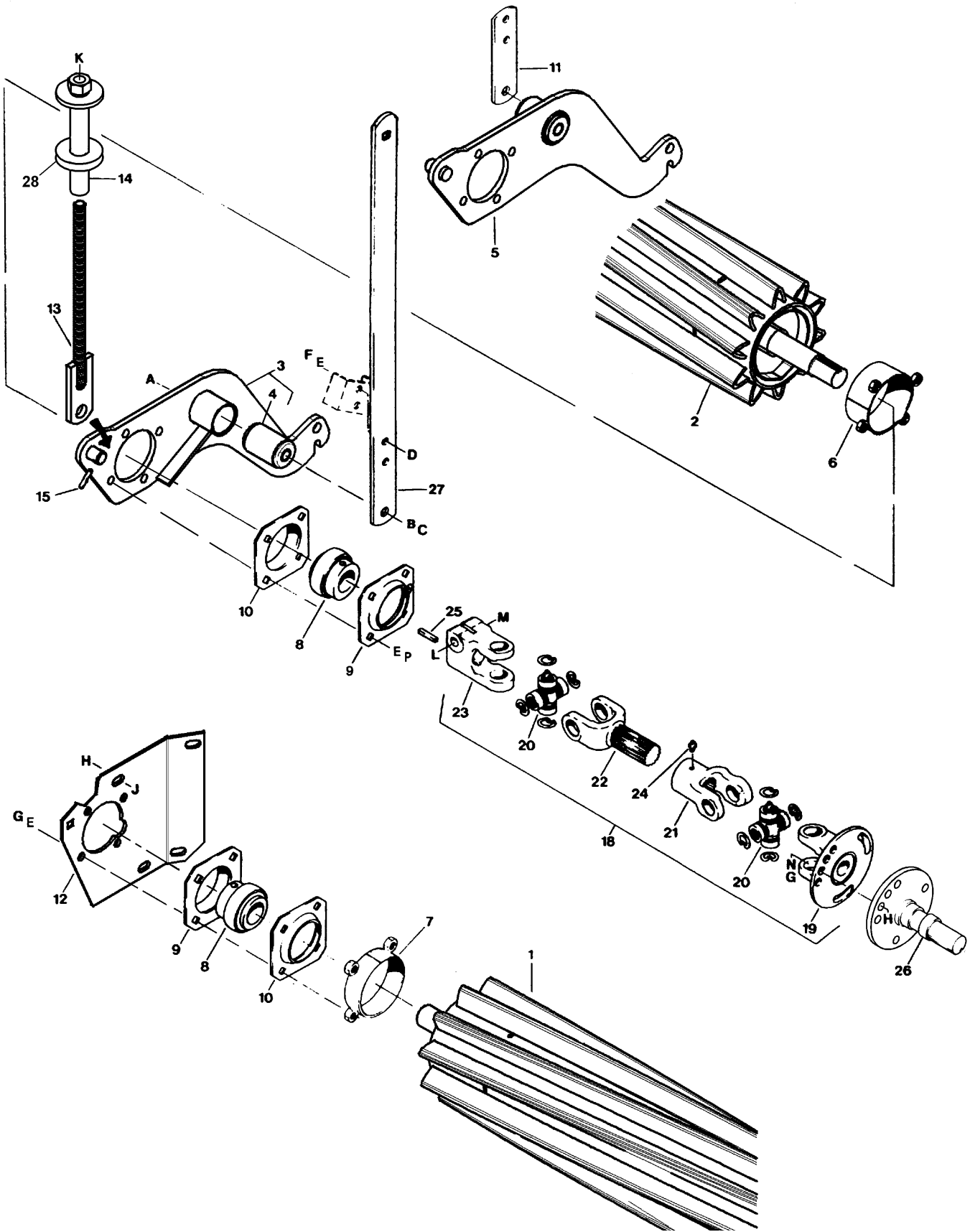


AUGER FLIGHTING REPAIR PIECES	
L/H OUTER SECTION	36833
L/H INNER SECTION	36825
R/H OUTER SECTION	36829
R/H INNER SECTION	36824

AUGER & DRIVE

REF	PART NUMBER	DESCRIPTION	QTY	SERIAL NUMBER	
1	41662	CHAIN - roller, auger drive	1		
2	16659	LINK - connector	1		
3	36796	SPROCKET - auger drive	1		
4	30256	BUSHING - split taper	1		
5	9333	SPROCKET ASSEMBLY - idler, includes items 6 & 7	2		
6	795	RING - retaining	4		
7	9213	BEARING - ball	2		
8	34581	WASHER - square	2		
9	30576	FLANGE - bearing	1		
10	30031	BEARING - ball, with lock collar	1		
11	30575	FLANGE - bearing, with lube fitting	1		
12	22018	STUD - auger positioning	1		
13	41435	SUPPORT - auger, left	1		
14	41431	SUPPORT - auger, right	1		
15	115708	AUGER - 12 ft. header, bolted shafts both ends	1		
	115709	AUGER - 14 ft. header, bolted shafts both ends	1		
	115710	AUGER - 16 ft. header, bolted shafts both ends	1		
16	41700	SHAFT - auger drive, left	1		
17	21936	BEARING - ball, with lock collar	1		
18	30603	FLANGE - bearing, with lube fitting	1		
19	30602	FLANGE - bearing	1		
20	REF	BUSHING - split taper, see "Reel & Drive"	1		
21	REF	KEY - 5/16 square x 2 inch, see "Reel & Drive"	1		
22	REF	PULLEY - driver, see "Header Primary Drive"	1		
23	REF	HUB - reel drive, see "Reel & Drive"	1		
24	REF	PULLEY - reel drive, see "Reel & Drive"	1		
25	115402	SUPPORT - finger mounting	6		
26	115854	FINGER - rubber	18		
27	103377	SPACER - finger mounting	12		
28	115408	ROD - finger mounting	6		
29	47328	PULLEY - auger drive	1		
30	36012	BELT - auger drive	1		
31	44623	WASHER - flat	1		
32	21062	BEARING - ball	1		
33	41949	SPROCKET - auger drive	1		
34	18671	FITTING - lube	1		
35	14911	BEARING - ball	1		
36	38854	RING - retaining, internal	1		
37	140048	ARM - auger drive	1		
38	140046	BRACKET - tensioning	1		
39	4761	WASHER - flat	1		
40	39274	GUIDE - chain	2		
41	47444	SHAFT - auger, right (bolted)	1		
42	16681	PIN - roll, 5/16 x 2 inch	12		
43	140316	WASHER - flat	1		
A	18525	BOLT - rnd. hd. sq. nk, 5/8 NC x 2-1/2"	P	18589	NUT - hex, 5/16 NC
B	18600	WASHER - flat, 21/32 inch ID (quantity may vary for alignment)	R	21975	BOLT - serr. flange hd, 3/8 NC x 1 inch
C	18639	WASHER - lock, 5/8 inch	S	21589	BOLT - hex head, 1/2 NC x 4 inch
D	18592	NUT - hex, 5/8 NC	T	21575	BOLT - hex head, 1/2 NC x 1 inch
E	21868	BOLT - rnd. hd. sq. nk, 1/2 NC x 1 inch	U	18597	WASHER - flat, 11/32 inch I.D.
F	21383	NUT - serrated flange lock, 1/2 NC	V	50186	NUT - lock, smooth fl. 1/2 NC dist. thd.
G	30528	BOLT - hx hd, 1/2 NC x 3-1/2", thread full	W	18599	WASHER - flat, 17/32 inch ID
H	21594	BOLT - hex head, 5/8 NC x 1-1/2 inch	X	21452	NUT - serrated flange lock, 3/8 NC
J	19965	BOLT - rnd. hd. sq. nk, 3/8 NC x 1 inch	Y	19966	BOLT - md hd, square nk, 3/8 NC x 1-1/4"
K	30228	NUT - lock, smooth fl. 3/8 NC dist. thd.	Z	21672	BOLT - hex head, 1/2 NC x 3, thread full
L	18636	WASHER - lock, 5/16 inch	~ f	REF	Indicates where hardware passes through frame member.
M	18591	NUT - hex, 1/2 NC			
N	21282	BOLT - rnd. hd. sq. nk, 5/16 NC x 1"			

CONDITIONER ROLLS & DRIVELINES



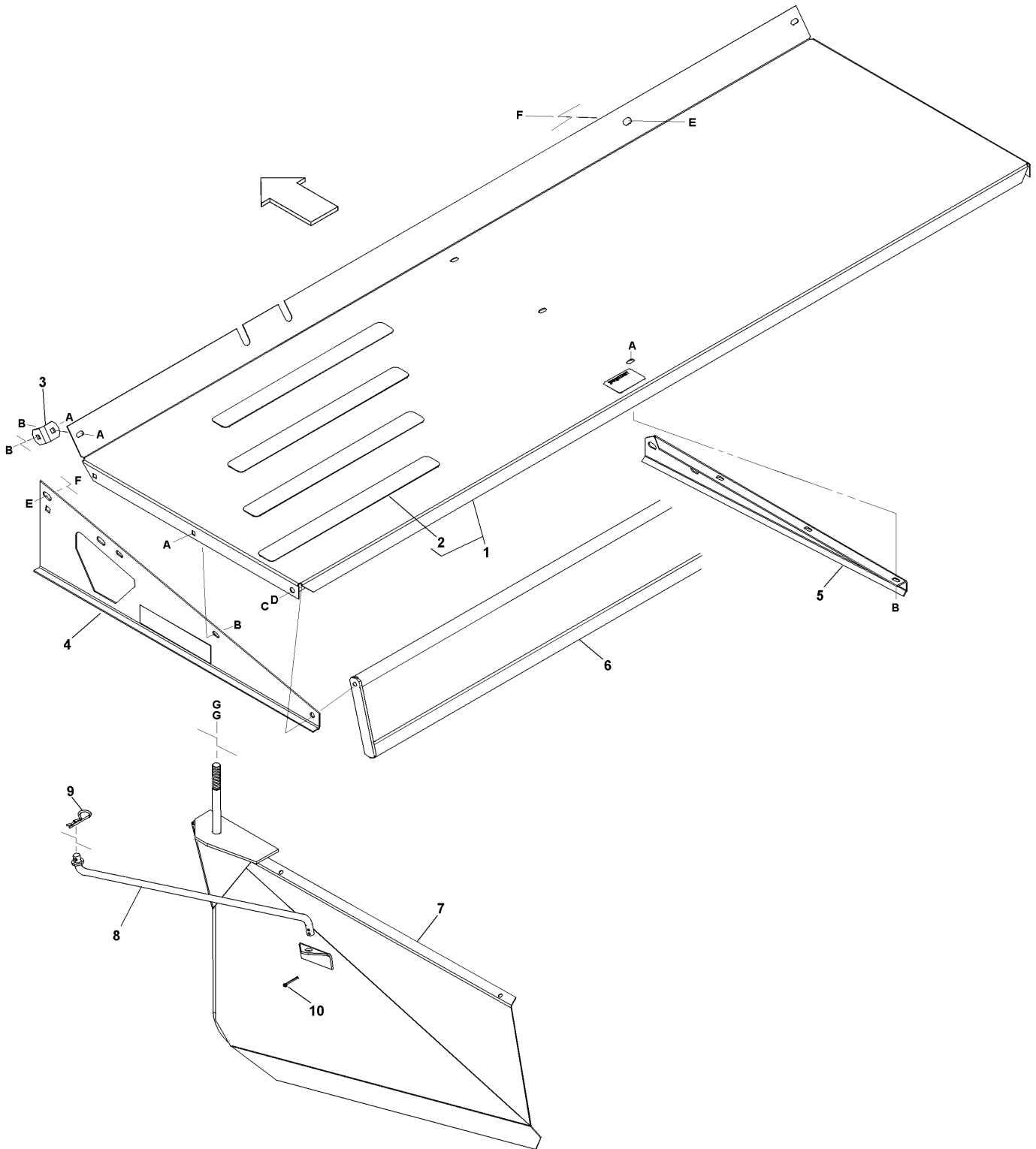
CONDITIONER ROLLS & DRIVELINES

REF	PART NUMBER	DESCRIPTION	QTY	SERIAL NUMBER
1	115399	ROLL - conditioner, L/H twist, (see note 1)	1	
2	115400	ROLL - conditioner, R/H twist, (see note 1).....	1	
3	115933	ARM - upper roll support, left hand (includes item 4)	1	
4	21897	BUSHING - rubber.....	2	
5	115934	ARM - upper roll support, right hand (includes item 4)	1	
6	41490	GUARD - upper roll	2	
7	41493	GUARD - lower roll	2	
8	30031	BEARING - ball, with lock collar	4	
9	30575	FLANGE - bearing, with lube fitting	4	
10	30576	FLANGE - bearing	4	
11	41496	BAR - upper roll support, right hand	1	
12	140363	SUPPORT - lower roll, right hand (was 140147).....	1	
13	115831	ROD - roll gap adjustment, with decal	2	
14	140349	TUBE - roll gap adjustment (was 41507).....	2	
15	16008	PIN - roll, 5/16 x 1-1/2 inch	2	
18	36816	DRIVELINE - conditioner rolls, includes items 19 - 24	2	
19	36876	YOKE - flange.....	2	
20	115396	CROSS AND BEARING KIT	4	
21	36877	YOKE - spline bore	2	
22	36878	YOKE - spline shaft	2	
23	36817	YOKE - clamp.....	2	
24	18671	FITTING - lube.....	2	
25	26846	KEY - 5/16 square x 1-1/2 inch.....	2	
26	REF	SHAFT - roll drive, see "Header Primary Drive"	2	
27	41497	BAR - upper roll support, left hand	1	
28	140347	WASHER - rubber	2	
A	21720	BOLT - hex head, 5/8 NC x 4-1/2 inch		
B	18639	WASHER - lock, 5/8 inch		
C	18592	NUT - hex, 5/8 NC		
D	21575	BOLT - hex head, 1/2 NC x 1 inch		
E	18638	WASHER - lock, 1/2 inch		
F	18591	NUT - hex, 1/2 NC		
G	21491	BOLT - hex head, 1/2 NC x 1-1/4 inch		
H	21383	NUT - serrated flange lock, 1/2 NC		
J	21066	BOLT - round head square neck, 1/2 NC x 1 inch		
K	18593	NUT - hex 3/4 NC		
L	21560	BOLT - hex head, 1/2 NC x 3 inch, Grade 5 (Torque: 80 ft.lbs.)		
M	50186	NUT - lock, smooth flange, 1/2 NC distorted thread		
N	18599	WASHER - flat, 17/32 inch ID		
P	18723	BOLT - hex head, 1/2 NC x 1-1/2 inch		

NOTES:

- To ensure proper meshing of rolls, before ordering check "twist" of roll to be replaced by viewing from either end. Machine must have one L/H twist and one R/H twist roll. Units in the serial number range 144177 to 150558 have the L/H twist roll in the upper position and the R/H twist roll in the lower position. Units outside this range have the L/H twist roll in the lower position and the R/H twist roll in the upper position.

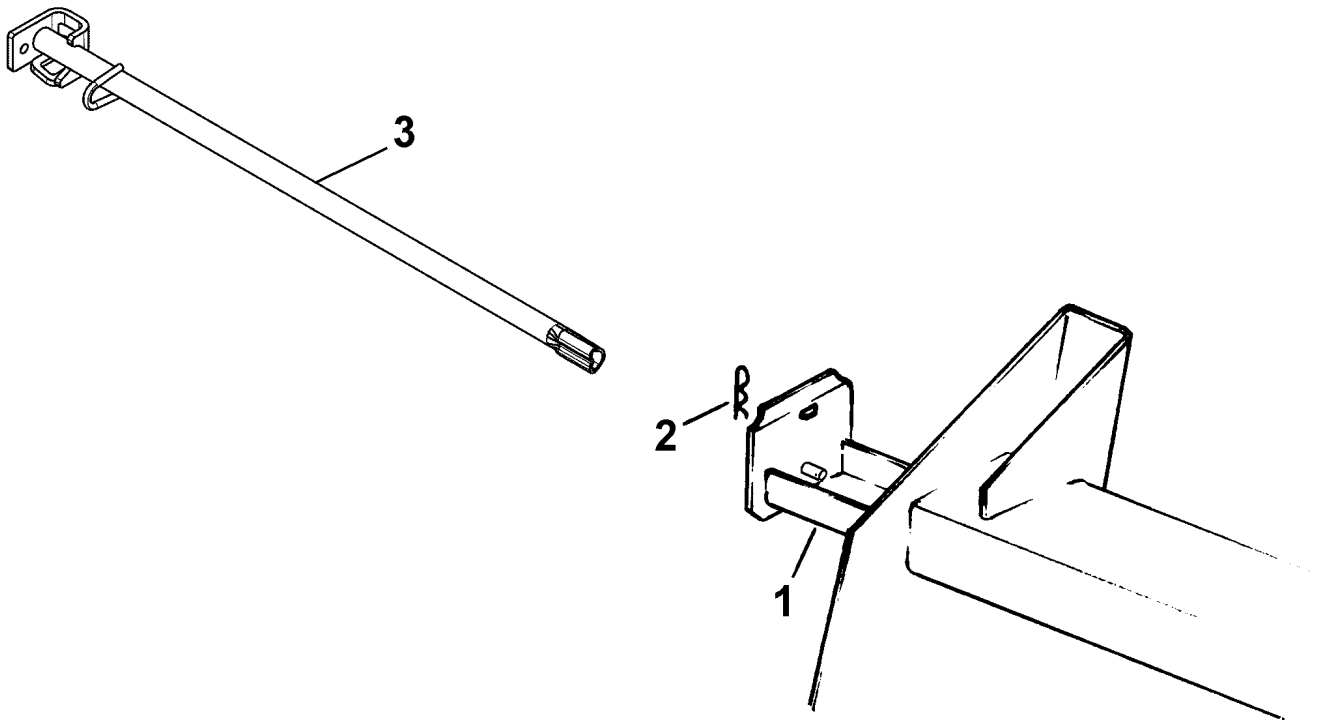
FORMING SHIELDS



FORMING SHIELDS

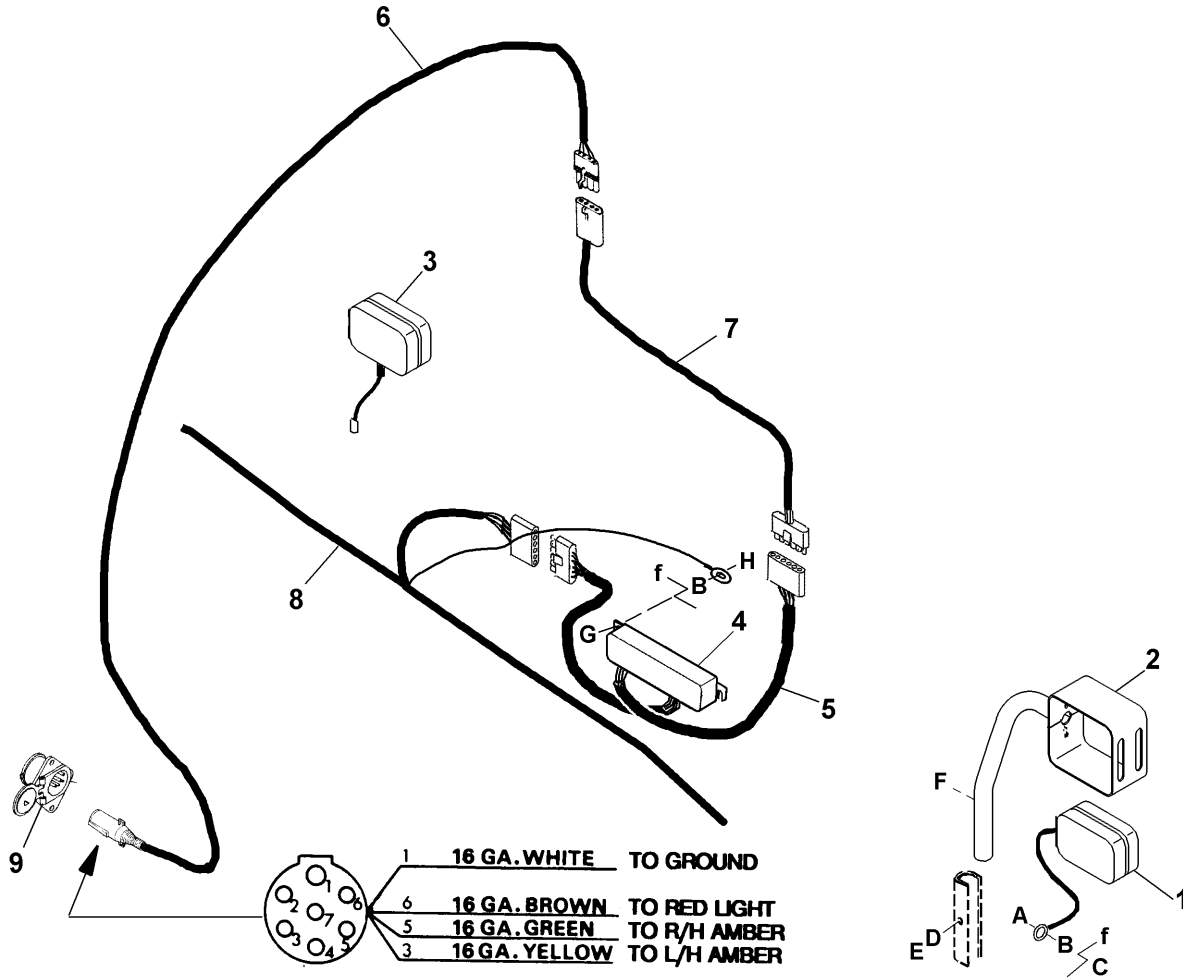
REF	PART NUMBER	DESCRIPTION	QTY	SERIAL NUMBER
1	140227	COVER – top, with grips (item 2) and decal - red	1	
	140319	COVER – top, with grips (item 2) and decal - black	1	
2	140225	STRIP – anti-slip.....	4	
3	140202	ANGLE – cover front mount	2	
4	140178	SUPPORT – left, with reflector - red.....	1	
	140321	SUPPORT – left, with reflector - black	1	
	140179	SUPPORT – right, with reflector - red	1	
	140322	SUPPORT – right, with reflector - black	1	
5	41932	SUPPORT - center	1	
6	41925	DEFLECTOR – rear - red	1	
	140335	DEFLECTOR – rear - black.....	1	
7	140160	DEFLECTOR – left side - red	1	
	140327	DEFLECTOR – left side - black.....	1	
	140161	DEFLECTOR – right side - red	1	
	140328	DEFLECTOR – right side - black.....	1	
8	115876	ROD – side deflector adjusting	2	
9	13125	PIN – hair.....	2	
10	18607	PIN – cotter, 5/32 dia. x 1-1/2 inch	4	
A	21863	BOLT - round head, square neck, 3/8 NC x 3/4 inch		
B	30228	NUT - lock, smooth flange, 3/8 NC distorted thread		
C	21575	BOLT - hex head, 1/2 NC x 1 inch		
D	18638	WASHER - lock, 1/2 inch		
E	21868	BOLT - round head, square neck, 1/2 NC x 1 inch		
F	21383	NUT - serrated flange, 1/2 NC		
G	18593	NUT - hex, 3/4 NC		
~	REF	Indicates where hardware passes through frame member		

TOOL BOX & WRENCH



REF	PART NUMBER	DESCRIPTION	QTY	SERIAL NUMBER
1	41025	BOX - tool	1	
2	13125	PIN - hair.....	2	
3	140135	TOOL - guard straightener / drive wrench (shaft engaging).....	1	

LIGHT GROUP



REF	PART NUMBER	DESCRIPTION	QTY	SERIAL NUMBER
1	113511	LIGHT - amber.....	2	
2	113471	SUPPORT – amber light, left.....	1	
	113473	SUPPORT – amber light right	1	
3	112152	LIGHT - red.....	2	
4	113579	MODULE – light relay	1	
5	115723	CONDUIT - slit.....	2	
6	36910	HARNESS - tongue section, includes connector and plug.....	1	
	30710	PLUG - 7 pole	1	
	31061	CONNECTOR KIT – 4-way	1	
7	115714	HARNESS – connector section, tongue to module	1	
8	115715	HARNESS – frame section, module to lights	1	
9	30461	RECEPTACLE - 7 pole, tractor	1	
A	21572	BOLT – hex head, 1/4 NC x 5/8 inch		
B	113757	WASHER – lock, external tooth, 1/4 inch I.D.		
C	18724	NUT – lock, 1/4 NC distorted thread		
D	18590	NUT - hex, 3/8 NC		
E	21567	BOLT – hex head, 3/8 NC x 3/4 inch		
F	50124	SCREW – hex washer head, 5/16 x 1/2 inch thread cutting		
G	135020	SCREW – truss head, #8 NC x 3/4 inch		
H	135021	NUT – keps lock, #8 NC		
~f	REF	Indicates where hardware passes through frame member.		

DECALS & REFLECTORS

CAUTION

To avoid injury or death from improper or unsafe machine operation:

1. Read the Operator's Manual, and follow all safety instructions. If you do not have a manual, obtain one from your dealer.
2. Do not allow untrained persons to operate the machine.
3. Review safety instructions with all operators annually.
4. Ensure that all safety signs are installed and legible.
5. Make certain everyone is clear of machine before starting engine and during operation.
6. Keep riders off the machine.
7. Keep all shields in place, and stay clear of moving parts.
8. Disengage header drive, put transmission in neutral, apply park brake and wait for all movement to stop before leaving operator's position.
9. Do not service, adjust, lubricate, clean or unplug machine with engine running or key in ignition.
10. Engage mechanical locks before servicing header or reel in the raised position.
11. Use slow moving vehicle emblem and flashing warning lights when operating on roadways unless prohibited by law.

* 32009

CAUTION

Before transporting windrower:
To avoid injury and/or machine damage caused by sudden, unexpected movement of hitch swing hydraulics:

1. Move latch rod to transport position.
2. Swing hitch to center until lock is engaged.

* 140280

CAUTION

To avoid injury and/or machine damage caused by loss of control:

1. Read Operator's Manual before transporting.
2. Do not tow with a vehicle weighing less than 5000 lbs. (2300 kg).
3. Secure all pins and hitch chain in transport position.
4. Do not transport at speeds greater than 20 m.p.h. (30 km/h).
5. Reduce transport speed for corners and slippery conditions.
6. Obey all highway traffic regulations in your area when transporting on public roads.
7. Use slow moving vehicle emblem and flashing warning lights unless prohibited by law.

* 32008

DANGER

Rest header on ground or engage mechanical locks before going under unit. See Operator's Manual.

* 44811

WARNING

To avoid injury, stop engine before opening power drive system shield. Keep all shields in place.

* 32738

WARNING

DO NOT GO NEAR LEAKS

- High pressure oil easily punctures skin causing serious injury, gangrene or death.
- If injured, seek emergency medical help. Immediate surgery is required to remove oil.
- Do not use finger or skin to check for leaks.
- Lower load or relieve hydraulic pressure before loosening fittings.

* 6884

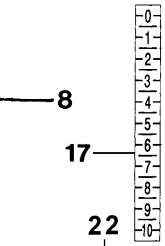
IMPORTANT

WORKING POSITION

pump mounted to tractor PTO
loop chain as shown
tractor drawbar

STORAGE POSITION
Hang pump by chain on forked bracket on hitch

NOTE: Pump weight - 70 lbs. (32 kg)



WARNING

STAY CLEAR of the machine while it is running. Contact with rotating reel, moving knife or conveyor can cause injury or death. Stop engine and remove key to perform any inspection, maintenance or repair work.

* 28420

Operate only with 540 rpm PTO.

14 in. (356 mm)

See tractor Operator's Manual for drawbar adjustment instruction.

* 32005

WARNING

To avoid bodily injury from fall of raised frame, use 5000 lbs. minimum capacity jack only. Block frame leg before removing wheel. See Operator's Manual for proper procedure.

* 140311



WARNING

To avoid bodily injury from contact with hot oil, do not remove dipstick when system is hot. See Operator's Manual for proper venting procedure when system is cold.

* 115100

IMPORTANT

Position side deflectors equal distance from center pivot.

IMPORTANT

See Operator's Manual for correct chain adjustment procedure. Service chain with Genuine Macdon Part only.

* 115031

NO LIFT OR TIE

This product may be covered by one or more of the following patents:

- CDN. # 1075914
- CDN. # 1226739
- CDN. # 1240159
- CDN. # 1244248
- CDN. # 1267292
- U.S. # 4346909
- U.S. # 4573309
- U.S. # 4660361
- U.S. # 4662161
- U.S. # 4909026
- U.S. # 4956966
- U.S. # 5005343

Other patents pending.

9

15

IMPORTANT

Standard guard with rear support. End guard - no rear support.

To prevent damage to cutting components, replace guards with the proper type. Note that the first three guards at the drive end(s) have no rear support.

IMPORTANT

Torque wheel bolts to 120 ft.-lbs. Retorque after first hour of operation.

DECALS & REFLECTORS

REF	PART NUMBER	DESCRIPTION	QTY	SERIAL NUMBER
1	32009	DECAL - CAUTION, general precautions.....	1	
2	140290	DECAL - CAUTION, transport lock (was 41666).....	1	
3	44611	DECAL - DANGER, header locks.....	2	
4	32738	DECAL - WARNING, shields & guards	3	
5	32008	DECAL - CAUTION, transport precautions	1	
6	28403	DECAL - WARNING, clear while running	3	
7	32005	DECAL - 540 rpm PTO	1	
	32006	DECAL - 1000 rpm PTO	1	
8	41668	DECAL - hydraulic pump	1	
9	23163	DECAL - 10 hour lube	1	
	23164	DECAL - 25 hour lube	1	
	23165	DECAL - 50 hour lube	16	
11	115146	REFLECTOR - amber	6	
	115147	REFLECTOR - red (qty. 4 for 16').....	2	
	115145	REFLECTOR - Day-Glow Orange (qty. 4 for 16').....	2	
12	23292	DECAL - no lift or tie	2	
13	32070	DECAL - patents.....	1	
14	122019	DECAL - IMPORTANT: Guards.....	1	
15	21032	REFLECTOR - slow moving vehicle	1	
16	18631	SCREW - machine, Phillips pan head #10 NC x 1/2 inch	2	
	21492	NUT - flange, #10 NC	2	
17	115817	DECAL - roll gap, includes two decals.....	1	
19	101375	DECAL - Wheel bolt torque.	1	
20	44944	DECAL - WARNING, hydraulic oil leaks.....	2	
21	115100	DECAL - WARNING, hot oil.....	1	
22	115782	DECAL - forming shield deflectors.....	1	
23	115781	DECAL - chain adjustment	1	
24	140311	DECAL - WARNING, 5000 lb. jack.....	1	150559-

PAINT

REF	PART NUMBER	DESCRIPTION	QTY	SERIAL NUMBER
	135148	PAINT - black, spray can (55 - 65 Gloss Level) (was 25990)		
	25991	PAINT - black, 1 litre (55 - 65 Gloss Level)		
	32879	PAINT - white, spray can		
	23957	PAINT - white, 1 litre		
	23950	PAINT - red, spray can		
	32880	PAINT - red, 1 litre		

PRODUCT IDENTIFICATION DECALS - MacDon



1
HITCH / FRAME TUBE / DEFLECTOR

MacDon — 2

5020 MOWER CONDITIONER — 3

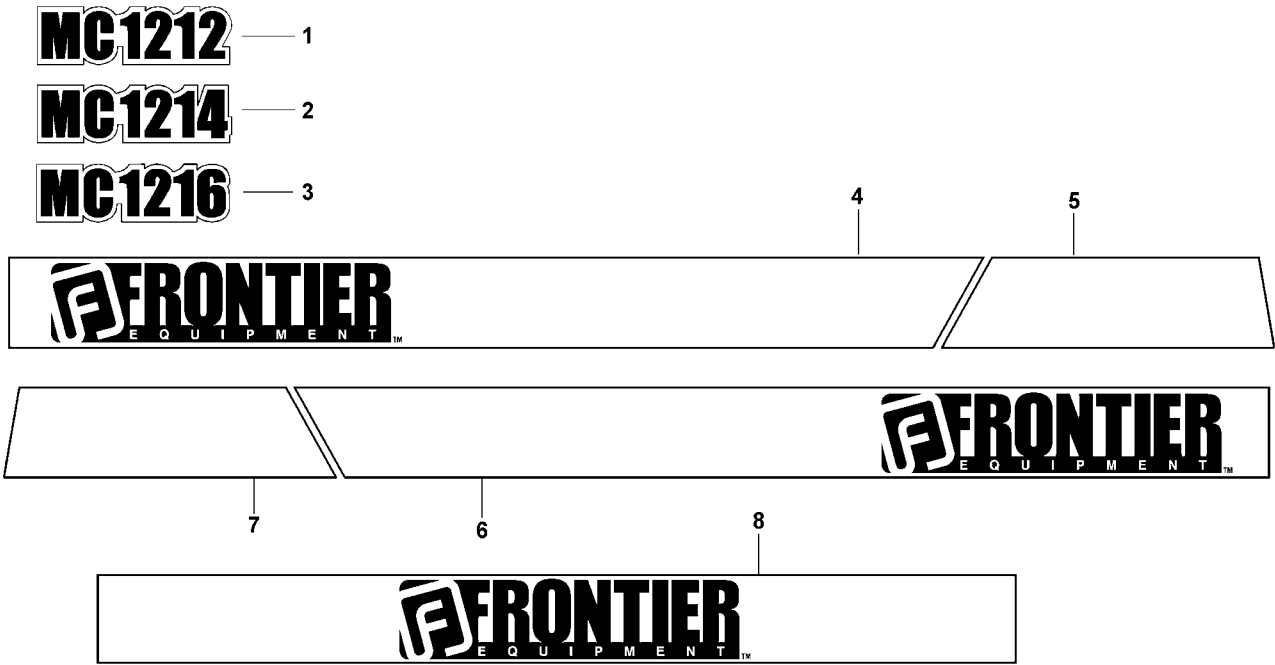


4
END SHIELDS

REF	PART NUMBER	DESCRIPTION	QTY	SERIAL NUMBER
1	115689	DECAL – rainbow, 102 x 1660 mm – frame tube	1	-150558
	140288	DECAL – rainbow, 102 x 2324 mm – rear deflector	1	150559-
	102527	DECAL – rainbow, 153 x 1500 mm – hitch..... see note (1) 12' & 14' – rear section (both sides) 16' – front and rear sections (both sides)		
	115049	DECAL – rainbow, 153 x 750 mm – 12' hitch front section (both sides)	2	
	115048	DECAL – rainbow, 153 x 1170 mm - 14' hitch front section (both sides)	2	
2	102582	DECAL – MacDon, 82 mm high – frame tube / deflector	1	
	102524	DECAL – MacDon, 122 mm high – hitch.....	2	
3	115909	DECAL – 5020 MOWER CONDITIONER	2	
4	115509	DECAL - MacDon on rainbow, tapered, L/H.....	1	
	115510	DECAL - MacDon on rainbow, tapered, R/H	1	

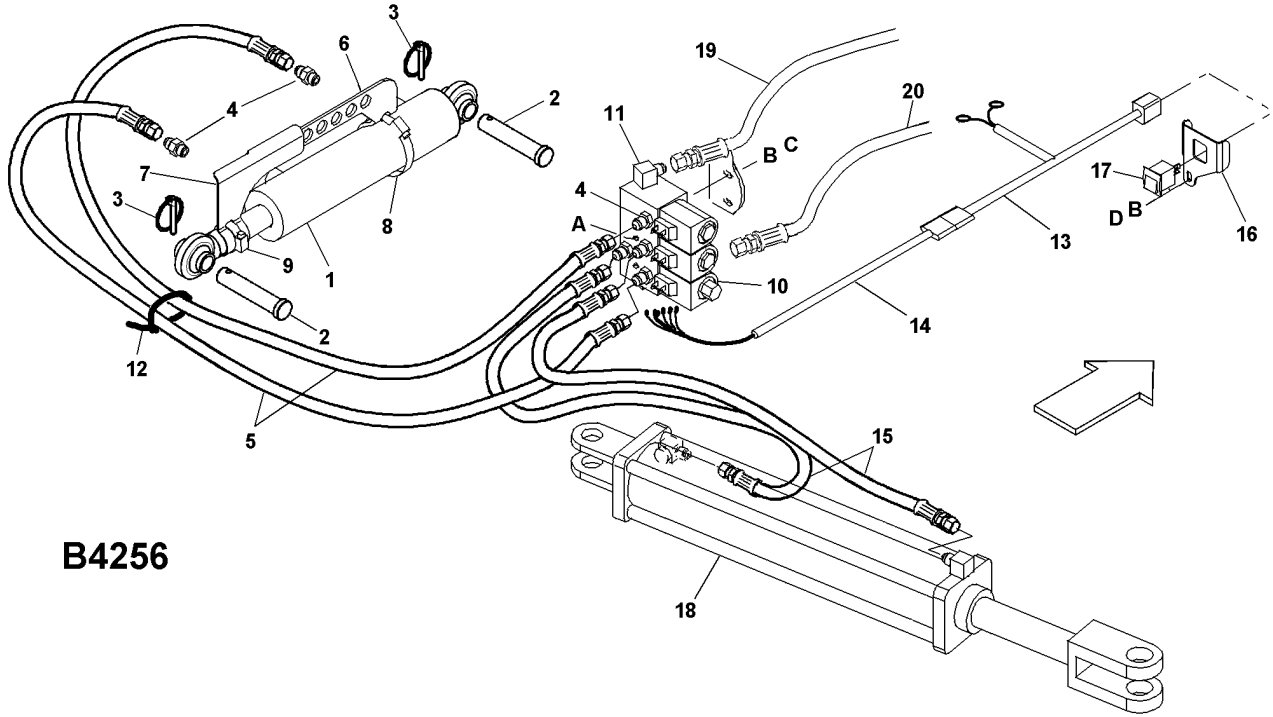
NOTES: (1) - Quantities: 12 ft = 2, 14 ft = 2, 16 ft = 4

PRODUCT IDENTIFICATION DECALS - Frontier



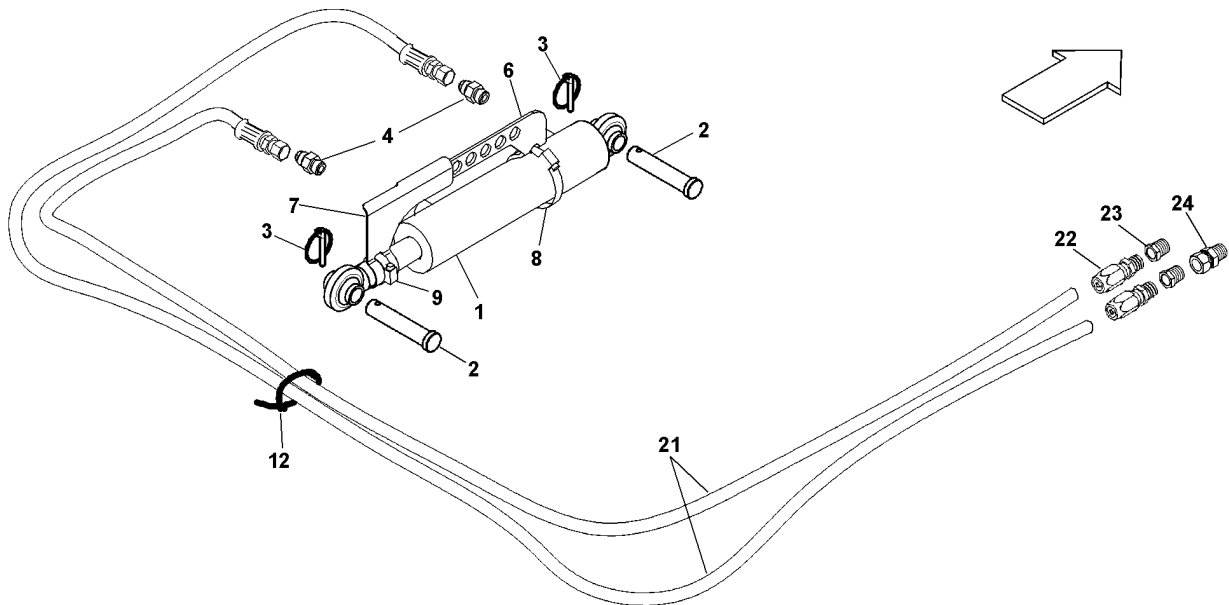
REF	PART NUMBER	DESCRIPTION	QTY	SERIAL NUMBER
1	140275	DECAL – MC1212 – end shields, 12'	2	
2	140276	DECAL – MC1214 – end shields, 14'	2	
3	140277	DECAL – MC1216 – end shields, 16'	2	
4	140281	DECAL – Frontier, hitch front left (cut to suit for 12' & 14').....	1	
5	140285	DECAL – hitch rear left.....	1	
6	140284	DECAL – Frontier, hitch front right (cut to suit for 12' & 14')	1	
7	140286	DECAL – hitch rear right.....	1	
8	140287	DECAL – Frontier, rear deflector	1	

HYDRAULIC HEADER ANGLE KITS (ATTACHMENTS)



B4256

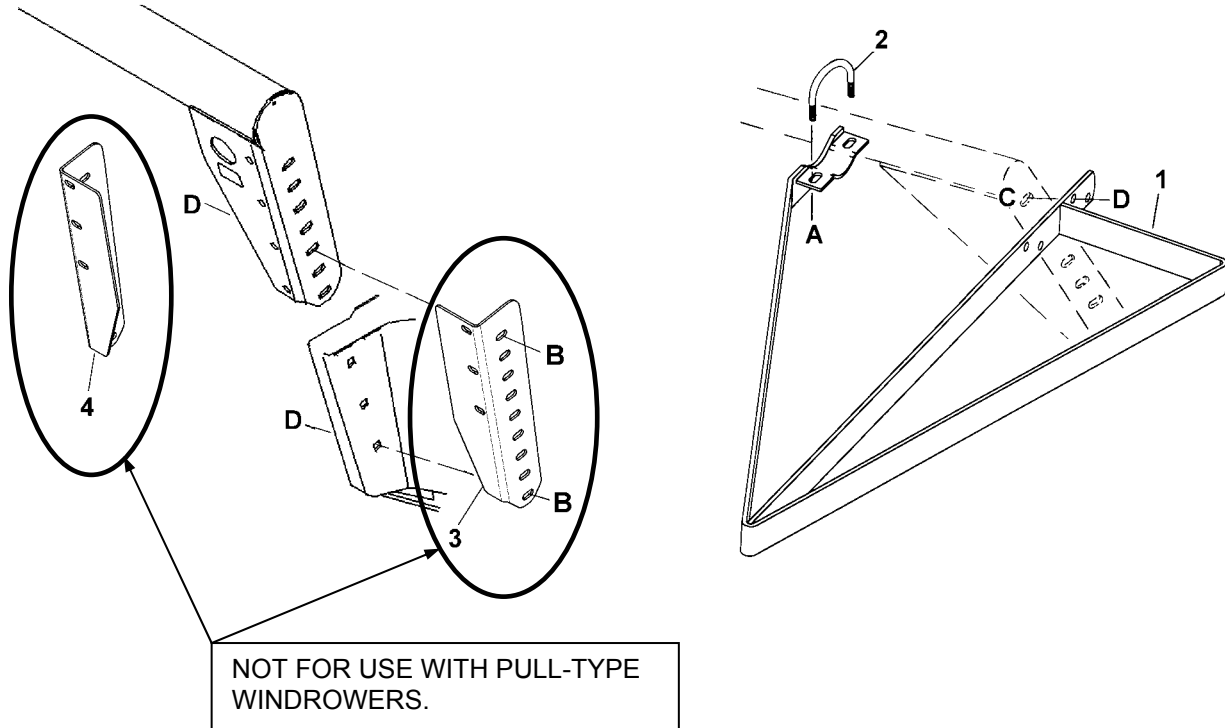
B4257



HYDRAULIC HEADER ANGLE KITS (ATTACHMENTS)

REF	PART NUMBER	DESCRIPTION	QTY	SERIAL NUMBER
	B 4256	KIT – hydraulic header angle, uses existing tongue steering cylinder hydraulic circuit. Kit available through WholeGoods only		
1	111035	CYLINDER – hydraulic, header angle	1	
2	20312	PIN – clevis, 3/4 dia. x 3.23 inch effective length	2	
3	50193	PIN – lynch	2	
4	15903	FITTING – adapter, 3/8 tube x 9/16 O-ring.....	6	
	50219	O-RING – for 9/16 fitting		
5	31805	HOSE – valve to header angle cylinder.....	2	
6	140188	BAR – gauge indicator.....	1	
7	140189	GAUGE – header angle.....	1	
8	21913	CLAMP – hose	1	
9	113532	CLAMP – hose	1	
10	140174	VALVE – selector	1	
11	30282	FITTING - 90° elbow, 3/8 tube x 9/16 O-ring.....	2	
	50219	O-RING – for 9/16 fitting		
12	21763	TIE – plastic.....	12	
13	115803	HARNESS – wiring, tractor section	1	
14	115804	HARNESS – wiring, hitch to valve.....	1	
15	31823	HOSE – valve to steering cylinder.....	2	
16	140199	SUPPORT – switch mount	1	
17	109062	SWITCH – rocker	1	
18	REF	CYLINDER – steering, see “Steering and Lift Cylinder Hydraulics”	1	
19	REF	HOSE – “Hitch Left” (removed from barrel end of steering cylinder).....	1	
20	REF	HOSE – “Hitch Right” (removed from rod end of steering cylinder)	1	
A	21854	BOLT – hex head, 1/4 NC x 2-1/2 inch		
B	18596	WASHER – flat, 9/32 inch I.D.		
C	18724	NUT – lock, 1/4 NC distorted thread		
D	21055	SCREW – self tapping, 1/4 x 1/2 inch		
	B 4257	KIT – hydraulic header angle, requires separate hydraulic circuit from tractor. Kit available through WholeGoods only		
1	111035	CYLINDER – hydraulic, header angle	1	
2	20312	PIN – clevis, 3/4 dia. x 3.23 inch effective length	2	
3	50193	PIN – lynch	2	
4	15903	FITTING – adapter, 3/8 tube x 9/16 O-ring.....	2	
	50219	O-RING – for 9/16 fitting		
6	140188	BAR – gauge indicator.....	1	
7	140189	GAUGE – header angle.....	1	
8	21913	CLAMP – hose	1	
9	113532	CLAMP – hose	1	
12	21763	TIE – plastic.....	12	
21	140229	HOSE – tractor to header angle cylinder.....	2	
22	140228	FITTING – hose end, reusable, 3/8 NPT male	2	
23	21980	FITTING – reducer, 3/8 NPT female x 1/2 NPT male.....	2	
24	30377	RESTRICTOR - fitting, 0.052 inch diameter orifice	1	

TALL CROP KIT (ATTACHMENT)



REF	PART NUMBER	DESCRIPTION	QTY	SERIAL NUMBER
	B 2539	KIT - tall crop, complete (includes dividers, lean bar extensions and hardware) Kit available through WholeGoods only.		
1	47345	DIVIDER - left hand	1	
	47346	DIVIDER - right hand	1	
2	47231	BOLT - "U", for 4 inch (100 mm) tube	2	
	47225	BOLT - "U", for 3 inch (75 mm) tube (not used in this application)	2	
3	140254	EXTENSION – left, lean bar (not used in this application)	1	
4	140255	EXTENSION – right, lean bar (not used in this application)	1	
A	30228	NUT - lock, smooth flange, 3/8 NC distorted thread		
B	21868	BOLT – round head, short square neck, 1/2 NC x 1 inch		
C	21449	BOLT - flange head, 1/2 NC x 1 inch		
D	21383	NUT - serrated flange, 1/2 NC		

NUMERICAL LIST

PART NO.	PAGE	PART NO.	PAGE	PART NO.	PAGE	PART NO.	PAGE
795	23	18880	19	24042	17	30668	25
795	33	18898	31	24042	19	30696	25
795	35	18900	21	24051	15	30701	7
1134	5	18916	7	24051	17	30702	7
4761	35	19117	23	24051	19	30710	41
5924	21	19183	31	24322	5	30753	17
6007	17	19878	7	24408	5	30753	19
6007	19	19926	5	24416	5	30846	15
9213	23	20312	47	25991	43	30846	19
9213	33	20312	47	26846	23	30889	7
9213	35	20535	33	26846	37	30890	7
9333	23	21032	43	27647	2	30891	17
9333	33	21062	31	28346	31	30891	19
9333	35	21062	35	28403	43	30893	17
9530	25	21153	7	28496	23	30894	17
11644	5	21194	25	28790	31	30894	19
13125	5	21404	3	28815	25	30895	17
13125	13	21406	3	29467	3	30895	19
13125	39	21420	21	29598	3	30898	3
13125	40	21492	43	30031	23	30902	3
14911	23	21540	5	30031	35	30903	3
14911	35	21763	15	30031	37	30904	3
15380	9	21763	47	30045	21	30910	17
15903	19	21763	47	30045	21	30910	19
15903	47	21810	17	30061	5	30911	17
15903	47	21810	19	30140	21	30911	19
16008	37	21819	17	30141	21	30927	17
16227	17	21827	19	30144	21	30968	17
16659	31	21828	17	30247	21	30968	19
16659	35	21828	19	30256	23	30994	19
16681	35	21840	17	30256	35	31061	41
16837	33	21840	19	30282	15	31774	7
17194	31	21862	25	30282	19	31805	19
17958	17	21884	17	30282	47	31805	47
17958	19	21897	5	30284	15	31823	47
18607	15	21897	37	30375	15	32005	43
18607	39	21913	47	30377	15	32006	43
18608	7	21913	47	30377	47	32008	43
18609	3	21936	31	30461	41	32009	43
18620	5	21936	35	30464	5	32070	43
18631	43	21940	31	30575	35	32225	15
18639	3	21980	47	30575	37	32225	17
18642	3	22018	35	30576	23	32225	19
18666	2	23163	43	30576	35	32738	43
18666	3	23164	43	30576	37	32879	43
18671	2	23165	43	30602	31	32880	43
18671	5	23292	43	30602	35	34181	25
18671	35	23950	43	30603	31	34182	25
18671	37	23957	43	30603	35	34183	25

NUMERICAL LIST

PART NO.	PAGE	PART NO.	PAGE	PART NO.	PAGE	PART NO.	PAGE
34359	26	36909	21	41528	9	41881	5
34390	27	36910	41	41540	9	41884	31
34390	25	36912	17	41543	17	41886	31
34391	25	36913	17	41543	19	41887	31
34581	35	36942	21	41545	17	41890	31
34752	33	36943	21	41545	19	41891	31
34980	26	37367	9	41579	15	41900	17
36012	31	37886	9	41580	15	41900	19
36012	35	38854	35	41581	15	41901	17
36627	13	39274	35	41582	15	41901	19
36796	31	40766	5	41650	3	41902	17
36796	35	41025	40	41655	3	41902	19
36811	15	41034	23	41659	2	41903	17
36816	37	41090	5	41660	2	41903	19
36817	37	41098	5	41662	35	41904	15
36819	23	41100	2	41663	17	41905	15
36823	2	41107	5	41663	19	41906	15
36824	34	41114	5	41668	43	41906	15
36825	34	41118	5	41700	35	41907	15
36829	34	41122	5	41707	15	41907	19
36833	34	41127	5	41708	15	41908	15
36836	2	41244	5	41717	31	41908	19
36837	5	41357	5	41718	31	41909	15
36840	17	41358	5	41719	31	41909	15
36840	19	41376	11	41730	31	41909	19
36841	17	41377	11	41734	31	41909	19
36841	19	41378	11	41785	3	41924	23
36842	17	41379	11	41793	31	41925	39
36842	19	41380	11	41794	31	41932	39
36844	17	41381	11	41806	23	41949	35
36845	15	41388	5	41809	9	41992	23
36853	17	41405	5	41817	17	41993	23
36854	21	41408	5	41817	19	41994	23
36855	17	41410	13	41821	23	42125	15
36855	19	41413	13	41824	23	42126	15
36856	17	41417	13	41830	23	42690	5
36856	19	41420	11	41841	23	42691	5
36859	21	41424	25	41844	23	44611	43
36868	17	41431	35	41850	23	44623	35
36876	37	41435	35	41859	15	44944	43
36877	37	41439	31	41860	15	47225	48
36878	37	41451	11	41861	15	47231	48
36880	17	41454	23	41864	15	47295	33
36880	19	41455	23	41866	15	47300	31
36882	21	41456	23	41867	15	47324	26
36883	21	41490	37	41868	15	47328	35
36888	15	41493	37	41870	15	47345	48
36891	21	41496	37	41871	15	47346	48
36892	21	41497	37	41872	15	47418	31

NUMERICAL LIST

PART NO.	PAGE	PART NO.	PAGE	PART NO.	PAGE	PART NO.	PAGE
47444	35	106724	19	115509	44	129007	27
47680	31	109062	47	115510	44	129008	27
47681	11	111035	47	115551	31	129043	27
47681	31	111035	47	115552	31	135148	43
47832	25	112152	41	115553	31	139003	29
47922	5	113152	29	115559	2	140028	9
47925	5	113153	29	115574	33	140039	33
50099	21	113222	25	115654	11	140041	31
50100	21	113229	25	115655	11	140046	31
50165	15	113471	41	115656	11	140046	35
50193	5	113473	41	115658	11	140048	35
50193	47	113511	41	115659	11	140055	33
50193	47	113532	47	115660	11	140058	9
50208	21	113532	47	115667	2	140059	9
50217	21	113579	41	115670	25	140064	5
50219	47	113698	25	115689	44	140072	9
50219	47	113937	25	115698	23	140073	33
50219	47	114027	9	115701	17	140087	9
100001	15	115048	44	115701	19	140088	9
100500	25	115049	44	115705	15	140089	9
100532	29	115074	23	115708	35	140090	9
100706	29	115074	31	115709	35	140096	31
100707	29	115088	11	115710	35	140103	9
100708	29	115089	11	115714	41	140105	31
100709	29	115090	11	115715	41	140135	40
100710	29	115093	11	115723	41	140160	39
100712	29	115094	11	115781	43	140161	39
100714	29	115095	11	115782	43	140174	47
100715	29	115100	43	115803	47	140178	39
100716	29	115133	2	115804	47	140179	39
100717	29	115134	31	115817	43	140188	47
100718	29	115145	43	115825	5	140188	47
100719	29	115146	43	115831	37	140189	47
100720	29	115147	43	115854	35	140199	47
100721	29	115321	25	115856	5	140202	39
100722	29	115396	37	115876	39	140203	13
100723	29	115399	37	115898	23	140215	31
100726	29	115400	37	115909	44	140216	31
101375	43	115402	35	115933	37	140217	31
102524	44	115408	35	115934	37	140218	31
102527	44	115412	11	118234	9	140219	31
102582	44	115413	11	118344	25	140220	31
102629	29	115414	11	118345	25	140225	39
102630	29	115416	11	118346	26	140227	39
103096	29	115417	11	118347	26	140228	47
103377	35	115418	11	118475	25	140229	47
103565	29	115469	9	122019	43	140238	5
103650	31	115470	9	129000	27	140240	23
103837	33	115471	9	129006	27	140245	7

NUMERICAL LIST

<u>PART NO.</u>	<u>PAGE</u>	<u>PART NO.</u>	<u>PAGE</u>	<u>PART NO.</u>	<u>PAGE</u>	<u>PART NO.</u>	<u>PAGE</u>
140246	7	155100	11				
140247	7	155101	11				
140248	7	B 2149	13				
140249	7	B 2515	26				
140250	7	B 2516	26				
140254	48	B 2517	26				
140255	48	B 2539	48				
140258	9	B 2890	31				
140260	19	B 2891	31				
140261	19	B 2892	31				
140264	19	B 4256	47				
140269	3	B 4257	47				
140271	19						
140272	19						
140273	19						
140274	19						
140275	45						
140276	45						
140277	45						
140281	45						
140284	45						
140285	45						
140286	45						
140287	45						
140288	44						
140290	43						
140292	9						
140293	9						
140306	2						
140307	2						
140308	2						
140309	7						
140311	43						
140312	5						
140316	35						
140319	39						
140321	39						
140322	39						
140327	39						
140328	39						
140335	39						
140347	37						
140349	37						
140353	11						
140355	11						
140363	37						
140369	17						
140369	19						
140370	5						

**Model 5020 Power Tongue Windrower
SUGGESTED STOCKING LIST**

P.C. REF	PART NUMBER	DESCRIPTION	SUGGESTED QTY.		ORDER QTY	UNIT PRICE	EXT. PRICE
			2 UNITS	5 UNITS			
<u>WHEELS AND TIRES - Parts Catalog Page 7</u>							
6	140246	HUB - with cups	1	1			
14	140250	CAP - dust	1	1			
<u>SKID SHOES - Parts Catalog Page 13</u>							
1	140203	SHOE - skid, left	0	1			
6	36627	SUPPORT - front	2	4			
<u>STEERING & LIFT CYLINDER HYDRAULICS - Parts Catalog Page 15</u>							
1	42125	SEAL KIT - master lift cylinder	0	1			
2	42126	SEAL KIT - slave lift cylinder	0	1			
10	50165	SEAL KIT - steering cylinder	1	1			
<u>HEADER DRIVE HYDRAULICS - Parts Catalog Page 19</u>							
18	140272	CARTRIDGE - relief valve	0	1			
	140273	SEAL KIT - relief valve	1	1			
21	30895	ELEMENT - hydraulic oil filter	2	6			
31	36856	SEAL KIT - hydraulic motor	1	1			
35	21810	BUSHING - rubber	1	2			
<u>PUMP/GEARBOX ASSEMBLY - Parts Catalog Page 21</u>							
	36854	SEAL KIT - gearbox	1	1			
<u>HEADER PRIMARY DRIVE - Parts Catalog Page 23</u>							
6	30031	BEARING - ball, with lock collar	1	4			
7	30576	FLANGE - bearing	1	3			
15	9333	SPROCKET ASSEMBLY - idler	0	1			
<u>SICKLE & BELT DRIVE - Parts Catalog Page 25</u>							
1	34181 *	SICKLE ASS'Y - less head, 12 ft.	1	3			
	34182 *	SICKLE ASS'Y - less head, 14 ft.	1	3			
	34183 *	SICKLE ASS'Y - less head, 16 ft.	1	3			
2	34390	SECTION - sickle	50	200			
3	34391	SECTION - half, end	2	8			
4	30668	BOLT - sickle head	15	60			
5	30696	BOLT - sickle section	50	200			
6	115321	HEAD - sickle	1	2			
7	113222	SEAL - sickle head	1	3			
8	100500	BEARING - needle, sickle head	1	3			
11	118345	SICKLE GUARD - left end	2	8			
	118344	SICKLE GUARD	10	100			
12	28815	GUIDE - sickle	5	30			
19	21862	PULLEY - idler	0	1			
22	9530	BELT - sickle drive	1	3			
33	113698	ARM - output	1	1			
34	113229	PIN - sickle head	1	4			
A	30669	NUT - sickle	50	200			

* - Order to suit header sizes sold.

**Model 5020 Power Tongue Windrower
SUGGESTED STOCKING LIST**

P.C. REF	PART NUMBER	DESCRIPTION	SUGGESTED QTY.		ORDER QTY	UNIT PRICE	EXT. PRICE
			2 UNITS	5 UNITS			
<u>SICKLE DRIVE BOX - Parts Catalog Page 29</u>							
	100532	DRIVE - sickle, complete	0	1			
1	100706	YOKE - output	0	1			
2	100707	SEAL - oil, output shaft	2	4			
3	100708	BUSHING - bronze	1	2			
5	100726	BUSHING - steel	1	2			
8	100710	SHAFT - input	0	1			
10	100712	O-RING	1	2			
11	102630	SEAL - oil, input shaft	1	2			
12	100714	BEARING ASS'Y - cup & cone	1	2			
16	100717	BEARING ASS'Y - cup & cone	1	2			
18	100719	CAP - dust	1	2			
20	100720	BEARING ASS'Y - cup & cone	2	4			
21	100721	PIVOT	0	1			
22	100722	RING - retaining, internal	2	4			
23	100723	BUSHING - bronze	2	4			
<u>REEL & DRIVE - Parts Catalog Page 31 & 33</u>							
4	21936	BEARING - ball, with lock collar	1	2			
5	30603	FLANGE - bearing, with lube fitting	1	1			
6	30602	FLANGE - bearing	1	1			
15	21940	BEARING - cam follower	2	5			
16	28346	BOLT - special, cam follower	1	2			
17	28790	BUSHING - plastic, reel arm	5	15			
18	47681	FINGER - pick-up, double	20	60			
19	19183	HOLDER - finger	5	20			
21	47680	FINGER - right end	1	3			
30	21062	BEARING - ball	1	4			
34	36012	BELT - reel drive	1	2			
41	47295	DISC - reel bushing	1	4			
<u>CONDITIONER ROLLS & DRIVELINES - Parts Catalog Page 37</u>							
4	21897	BUSHING - rubber	1	2			
18	36816	DRIVELINE - conditioner rolls	0	1			
20	115396	CROSS AND BEARING KIT	1	2			
<u>PAINT - Parts Catalog Page 43</u>							
	25991	PAINT - black, 1 litre	1	1			
	23957	PAINT - white, 1 litre	1	1			
	32880	PAINT - red, 1 litre	1	1			