

Model 4000 MOWER CONDITIONER PARTS CATALOG

TABLE OF CONTENTS

Main Frame and Header Frame	2,3
Hitch Group	4,5
Rockshaft and Wheels	6,7
Linkage Group: Header to Frame.....	8,9
Forming Shield Group	10,11
Skid Shoes	12,13
Reel	14,15
Reel Drive	16,17
Sickle and Drive.....	18,19
Sickle Stub Guards (Option).....	20,21
Sickle Drive Assembly.....	22,23
Rolls and Float Arms	24,25
Drives Group	26,27
Drivelines and Gear Drive.....	28,29
Clutch Assembly.....	30,31
Gear Drive Assembly.....	32,33
Decals, Reflectors, and Paint	34,35
Product Identification Decals	36,37
Hydraulics	38,39
Light Group.....	40
Numerical List.....	41,42
Suggested Stocking List.....	43,44

ABBREVIATIONS

L/H - left hand (Determined from Operator's position, facing forward.)
R/H - right hand
I.D. - inside diameter
O.D. - outside diameter
A/R - as required (quantity varies)
REF - reference, part number called up elsewhere in catalog
NSS - not serviced separately
NC - national coarse thread
NF - national fine thread

NOTE: Common hardware is not illustrated. Alphabetic references are used to designate position and description of these items.

When ordering, be sure the complete and proper serial number is given. Some parts vary with header size; be sure you are ordering the correct number for your header.

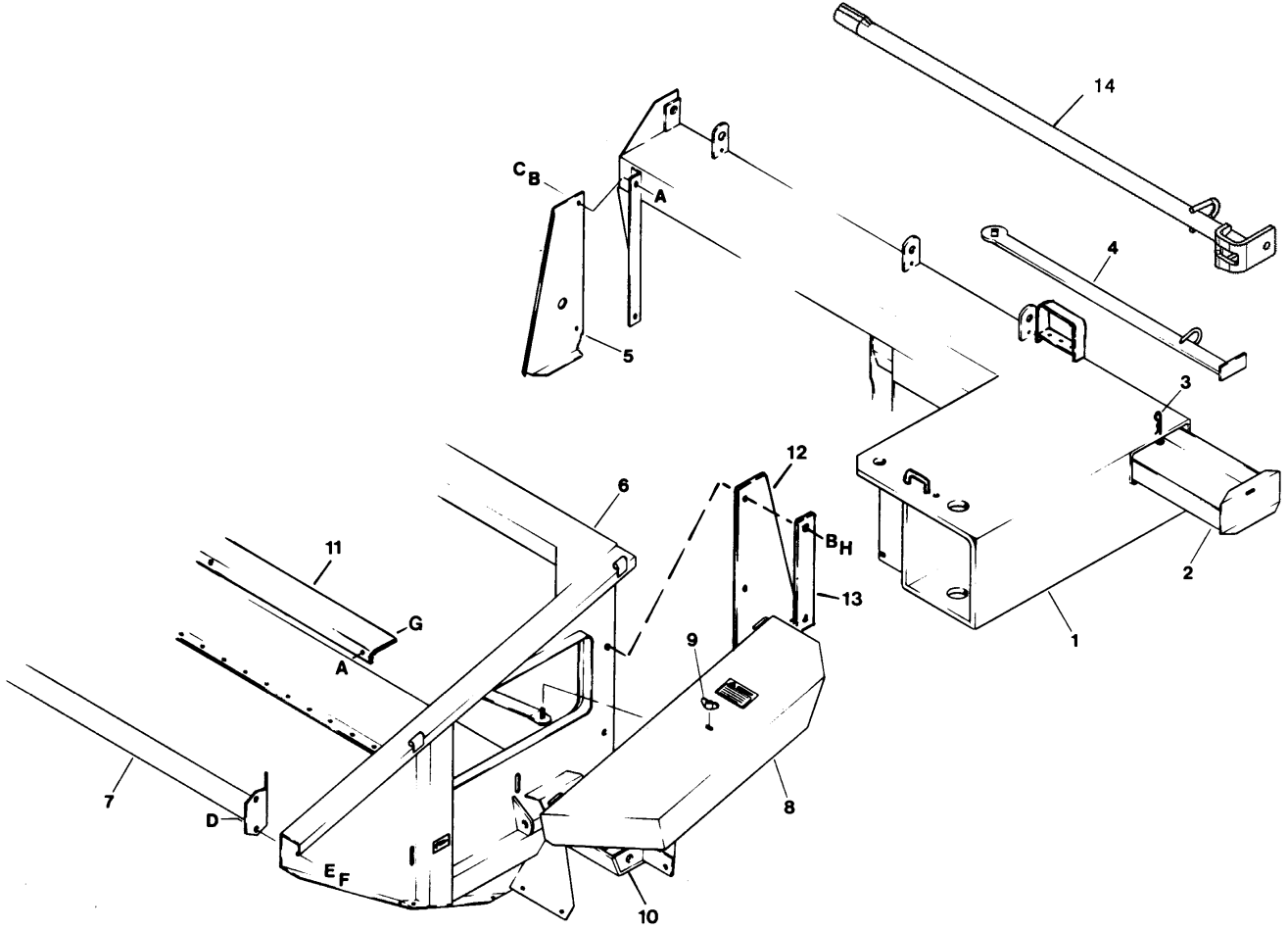
SERIAL NUMBER BREAKS

The side of the serial number on which the dash (-) appears determines whether the part is used "up to" or "after" the serial number given.

Example:	-74924	Used on machines up to and including serial number 74924.
	74925-	Used on machines including and after serial number 74925.

BOLDDED PART NUMBERS INDICATE CHANGE FROM PREVIOUS PRODUCTION YEAR

MAIN FRAME and HEADER FRAME

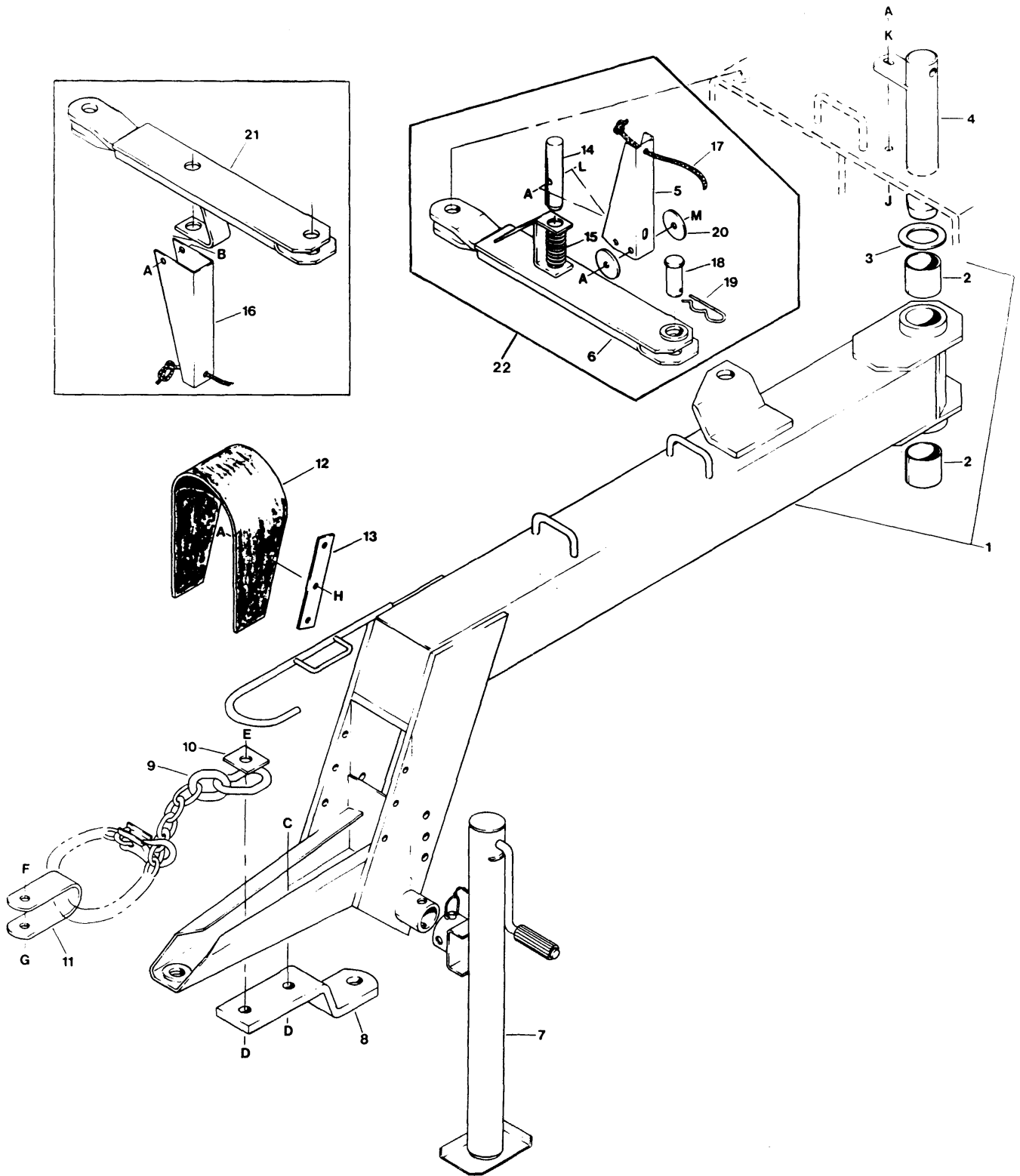


MAIN FRAME and HEADER FRAME

REF	PART NUMBER	DESCRIPTION	QTY	SERIAL NUMBER
1	REF	FRAME - main, not serviced	1	
2	36110	BOX - tool.....	1	
3	13125	PIN - hair	1	
4	34625	TOOL - drive wrench/guard straightener.....	1	-102199
5	36103	SHIELD - right hand, with decals.....	1	
6	REF	FRAME - header, not serviced	1	
7	36610	DEFLECTOR - lean bar	1	-74321
	36723	DEFLECTOR - lean bar	1	74322-
8	36616	SHIELD - reel drive, with decals.....	1	
9	21289	NUT - wing, 3/8 inch NC.....	1	
10	36517	SUPPORT - sickle drive box (welded - see Note 1).....	1	
11	36142	EXTENSION - feed pan	1	
12	36133	SEAL - rubber.....	1	
13	36132	BAR - seal mounting	1	
14	140135	TOOL - drive wrench/guard straightener (was 52031)	1	102200-
A	21863	BOLT - round head, square neck, 3/8 NC x 3/4 inch		
B	18637	WASHER - lock, 3/8 inch		
C	18590	NUT - hex, 3/8 NC		
D	21575	BOLT - hex head, 1/2 NC x 1 inch		
E	18638	WASHER - lock, 1/2 inch		
F	18591	NUT - hex, 1/2 NC		
G	21452	NUT - serrated flange, 3/8 NC		
H	20077	BOLT - hex head, 3/8 NC x 1 inch		

NOTES: 1. Also required for item 10 is Part No. 32926 WELDING JIG. This item to be returned.

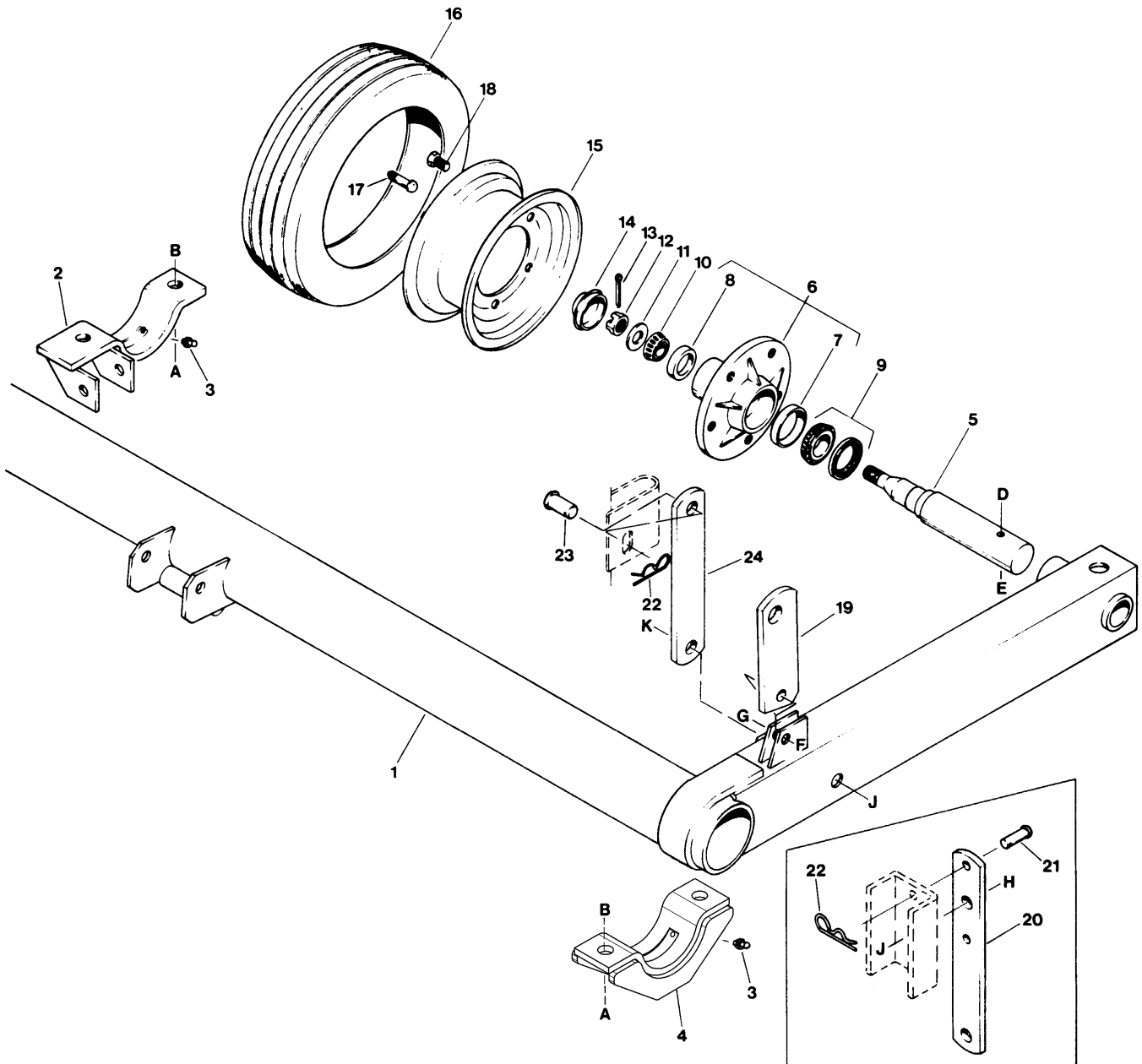
HITCH GROUP



HITCH GROUP

REF	PART NUMBER	DESCRIPTION	QTY	SERIAL NUMBER
1	36150	HITCH - with bushings and decals	1	-76500
	36600	HITCH - with bushings and decals	1	76501-
2	25579	BUSHING - hitch pivot.....	2	
3	27160	WASHER - flat	1	
4	36196	PIN - hitch.....	1	
5	36251	CHANNEL - link release.....	1	76501-
6	36214	LINK - hitch control.....	1	76501-
7	36176	JACK - hitch	1	
8	36180	LUG - clevis.....	1	
9	21404	CHAIN - hitch	1	
10	29467	WASHER - rectangular	1	
11	29598	CLEVIS - chain.....	1	
12	36211	SHIELD - drive line.....	1	
13	36212	BAR - reinforcement.....	2	
14	36207	PIN - link.....	1	
15	29028	SPRING - compression.....	1	
16	36213	CHANNEL - link release.....	1	-76500
17	36019	ROPE - link release.....	1	
18	30525	PIN - clevis, 1 x 2 1/2 inch.....	2	
19	13125	PIN - hair	2	
20	1246	WASHER - flat	2	76501-
21	36200	LINK - hitch control.....	1	-76500
22	B 2068	KIT - mechanical hitch position control, complete (Kit available through WholeGoods only.)		
A	18669	NUT - lock, 3/8 NC distorted thread		
B	20055	BOLT - hex head, 3/8 NC x 2 1/4 inch		
C	30811	BOLT - hex head, 3/4 NC x 2 inch		
D	18689	NUT - lock, 3/4 NC distorted thread		
E	19957	BOLT - hex head, 3/4 NC x 2 1/2 inch		
F	21406	BOLT - hex head, 5/8 NC x 3 1/2 inch		
G	18666	NUT - lock, 5/8 NC distorted thread		
H	21264	BOLT - hex head, 3/8 NC x 1 1/4 inch		
J	21561	BOLT - hex head, 3/8 NC x 1 1/2 inch		
K	18598	WASHER - flat, 13/32 inch I.D.		
L	21102	BOLT - hex head, 3/8 NC x 2 1/2 inch		
M	21568	BOLT - hex head, 3/8 NC x 3 inch		

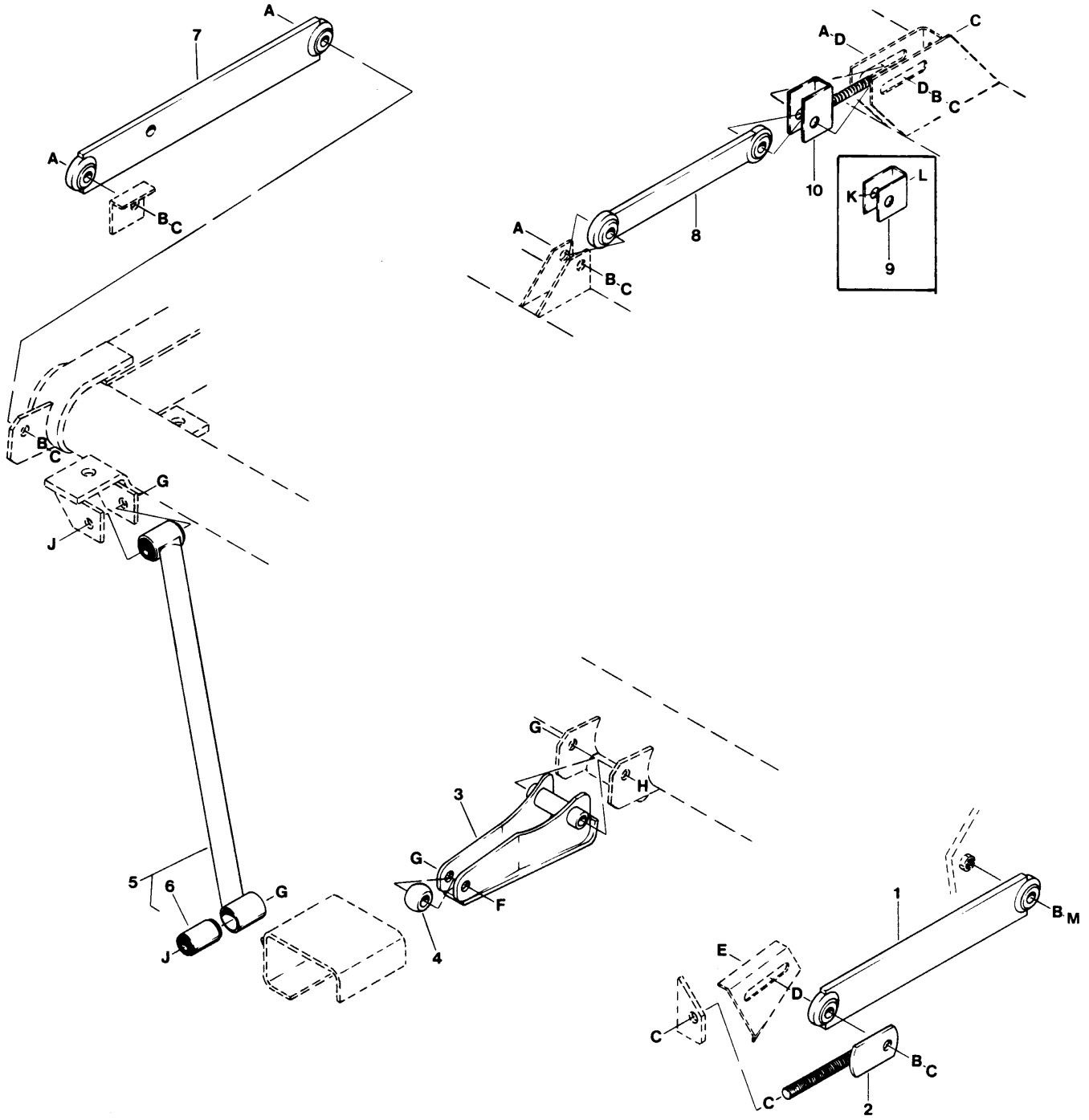
ROCKSHAFT & WHEELS



ROCKSHAFT & WHEELS

REF	PART NUMBER	DESCRIPTION	QTY	SERIAL NUMBER
1	36298	ROCKSHAFT - with decals	1	
2	36332	CAP - bearing, right hand.....	1	
3	18671	FITTING - lube, straight.....	2	
4	141175	CAP - bearing, left hand (was 36324)	1	
5	36325	SPINDLE - wheel.....	2	
6	21686	HUB - with bearing cups.....	2	
7	7900	BEARING - cup, inner	2	
8	7909	BEARING - cup, outer	2	
9	7910	BEARING - cone, with seal	2	
10	7920	BEARING - cone	2	
11	18601	WASHER - flat, 13/16 inch I.D.	2	
12	5512	NUT - slotted hex, 3/4 inch NF	2	
13	18648	PIN - cotter, 3/16 x 1 1/4 inch.....	2	
14	21687	CAP - dust.....	2	
15	30445	WHEEL - 14 x 8 KB.....	2	
16	30446	TIRE - 9.5L - 14 I1 Rib Implement	2	
17	21395	STEM - valve.....	2	
18	21719	BOLT - wheel	10	
19	36329	ARM - radius	1	
20	36328	STOP - lift cylinder.....	1	-74321
21	19927	PIN - clevis, 1/2 x 1.18 inch effective length.....	1	-74321
22	13125	PIN - hair	1	
23	11814	PIN - clevis, 3/4 x 1.18 inch effective length.....	1	74322-
24	36335	SUPPORT - cylinder stop.....	1	74322-
A	30811	BOLT - hex head, 3/4 NC x 2 inch		
B	18689	NUT - lock, 3/4 NC distorted thread		
D	21102	BOLT - hex head, 3/8 NC x 2 1/2 inch		
E	21390	NUT - lock, 3/8 NC distorted thread		
F	21587	BOLT - hex head, 5/8 NC x 2 inch		
G	18666	NUT - lock, 5/8 NC distorted thread		
H	19957	BOLT - hex head, 3/4 NC x 2 1/2 inch		-74321
J	102636	NUT - side lock, 3/4 NC distorted thread		
K	21733	BOLT - hex head, 3/4 NC x 4 1/2 inch		74322-

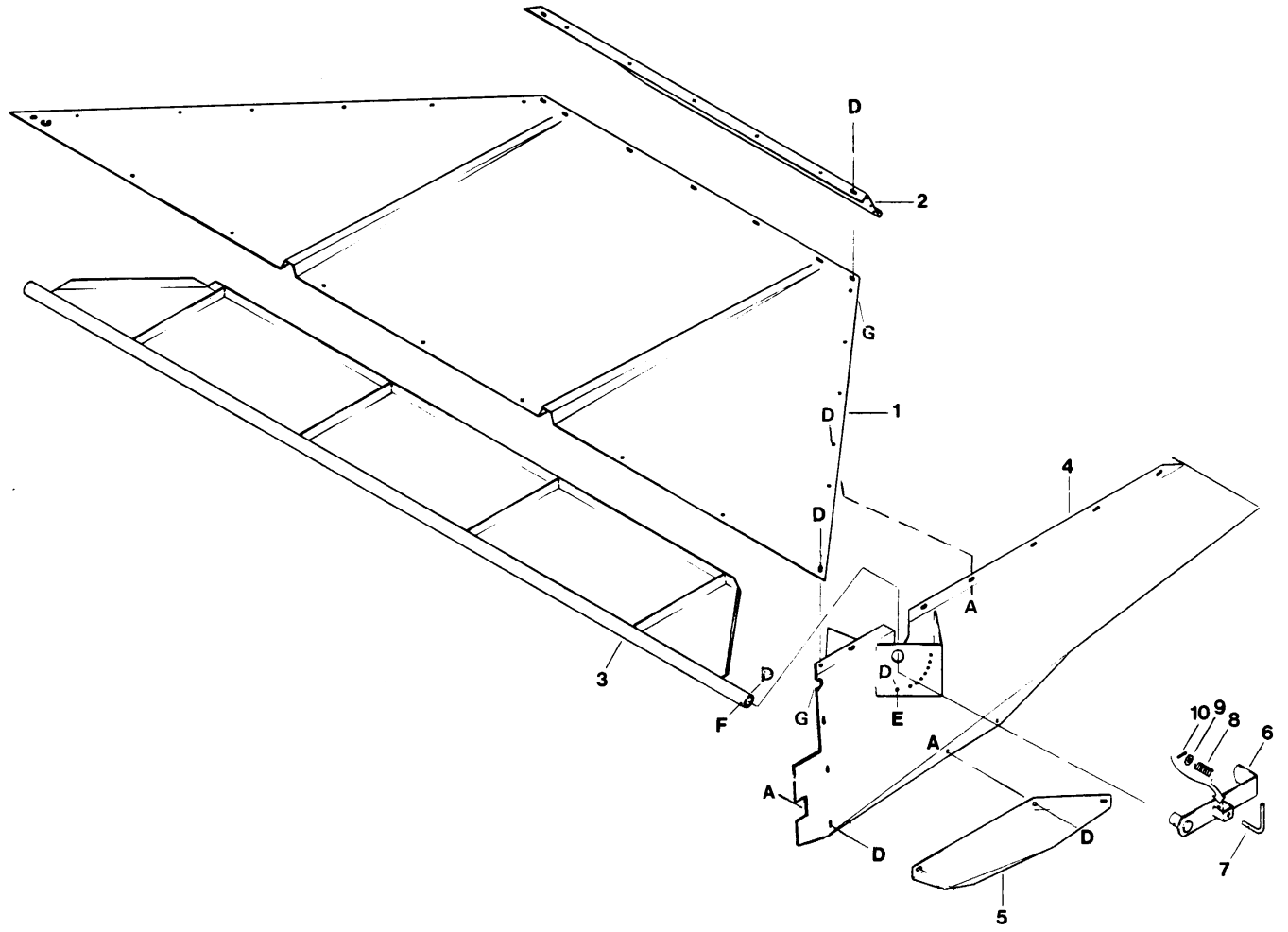
LINKAGE GROUP: HEADER TO FRAME



LINKAGE GROUP: HEADER TO FRAME

REF	PART NUMBER	DESCRIPTION	QTY	SERIAL NUMBER
1	36628	LINK - float, left hand.....	1	
2	36622	ADJUSTER - sickle drive belt tension.....	1	
3	36336	LINK - center, bottom.....	1	
4	36026	BALL - steel.....	1	
5	36920	LINK - cross, with bushings.....	1	
6	13626	BUSHING - rubber.....	2	
7	36636	LINK - float, right hand.....	1	
8	36280	LINK - center, top.....	1	
9	36284	CHANNEL - top link.....	1	-76500
10	36388	CHANNEL - with stud, top link.....	1	76501-
A	21584	BOLT - hex head, 5/8 NC x 2 1/2 inch		
B	18639	WASHER - lock, 5/8 inch		
C	18592	NUT - hex, 5/8 NC		
D	18600	WASHER - flat, 21/32 inch I.D.		
E	30759	BOLT - round head, square neck, 5/8 NC x 2 1/2 inch		
F	21583	BOLT - hex head, 5/8 NC x 3 inch		
G	18666	NUT - lock, 5/8 NC distorted thread		
H	21562	BOLT - hex head, 5/8 NC x 5 inch		
J	21406	BOLT - hex head, 5/8 NC x 3 1/2 inch		
K	30812	BOLT - round head, square neck, 3/8 NC x 4 inch thread full length		
L	18590	NUT - hex, 3/8 NC		
M	21587	BOLT - hex head, 5/8 NC x 2 inch		

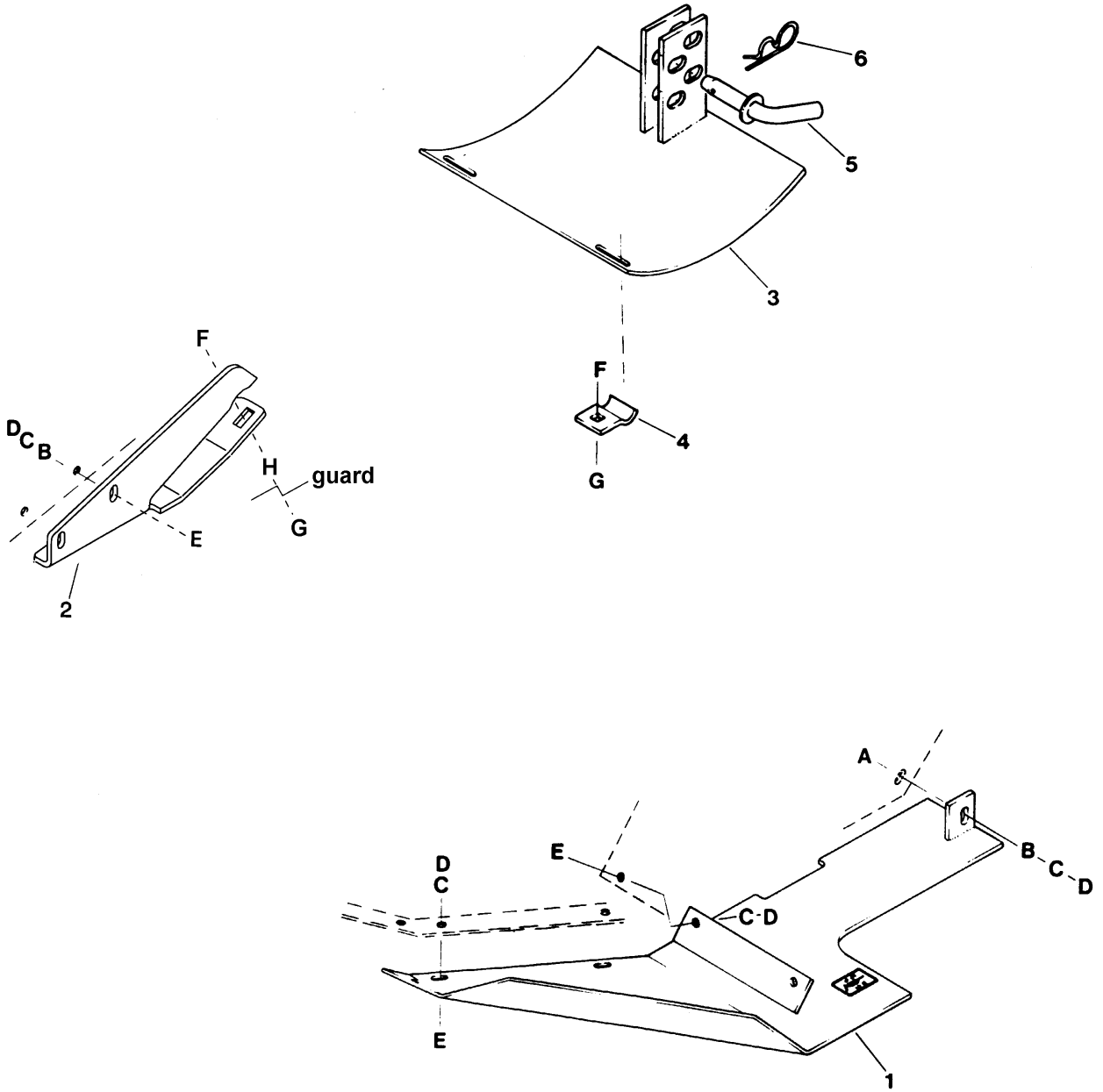
FORMING SHIELD GROUP



FORMING SHIELD GROUP

REF	PART NUMBER	DESCRIPTION	QTY	SERIAL NUMBER
1	36344	COVER - top	1	
2	36292	DEFLECTOR - rear	1	
3	36450	GATE - windrow forming	1	
4	36432	DEFLECTOR - side, left	1	
	36433	DEFLECTOR - side, right	1	
5	36457	DEFLECTOR - light crop, left	1	
	36458	DEFLECTOR - light crop, right	1	
6	36444	HANDLE - gate control	1	
7	36278	PIN - "L"	1	
8	19739	SPRING - compression	1	
9	18598	WASHER - flat, 13/32 inch I.D.	1	
10	18632	PIN - roll, 1/8 x 1 inch	1	
A	21863	BOLT - round head, square neck, 3/8 NC x 3/4 inch		
D	30228	NUT - lock, smooth flange, 3/8 NC distorted thread		
E	21567	BOLT - hex head, 3/8 NC x 3/4 inch		
F	20078	BOLT - hex head, 3/8 NC x 1 3/4 inch		
G	19965	BOLT - round head, square neck, 3/8 NC x 1 inch		

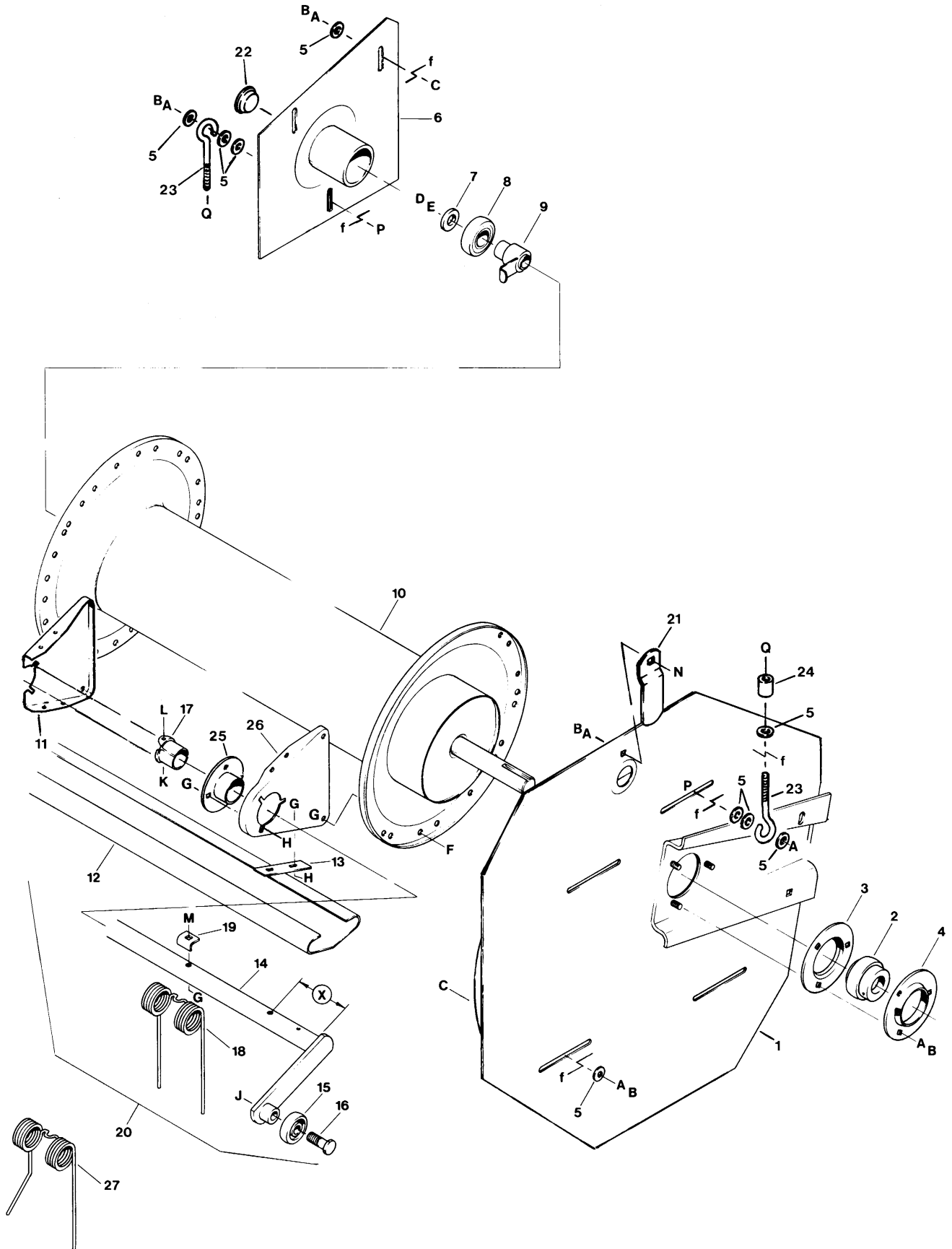
SKID SHOES



SKID SHOES

REF	PART NUMBER	DESCRIPTION	QTY	SERIAL NUMBER
1	36601	SHOE - skid, left hand, with decal.....	1	
2	36755	SHOE - skid, right hand.....	1	-102199
	36809	SHOE - skid, right hand.....	1	102200-115999
	104090	SHOE - skid, right hand.....	1	116000-
3	36590	SHOE - skid, adjustable	3	-76500
	36625	SHOE - skid, adjustable	3	76501-
4	36596	SUPPORT - front.....	6	-76500
	36627	SUPPORT - front.....	6	76501-
5	36586	PIN - skid shoe	3	
6	13125	PIN - hair	3	
A	19966	BOLT - round head, square neck, 3/8 NC x 1 1/4 inch		
B	18598	WASHER - flat, 13/32 inch I.D.		
C	18637	WASHER - lock, 3/8 inch		
D	18590	NUT - hex, 3/8 NC		
E	19965	BOLT - round head, square neck, 3/8 NC x 1 inch		
F	18654	NUT - hex, 7/16 NC		
G	21468	BOLT - round head, square neck, 7/16 NC x 1 3/4 inch		
H	18599	WASHER - flat, 17/32 inch I.D.		

REEL



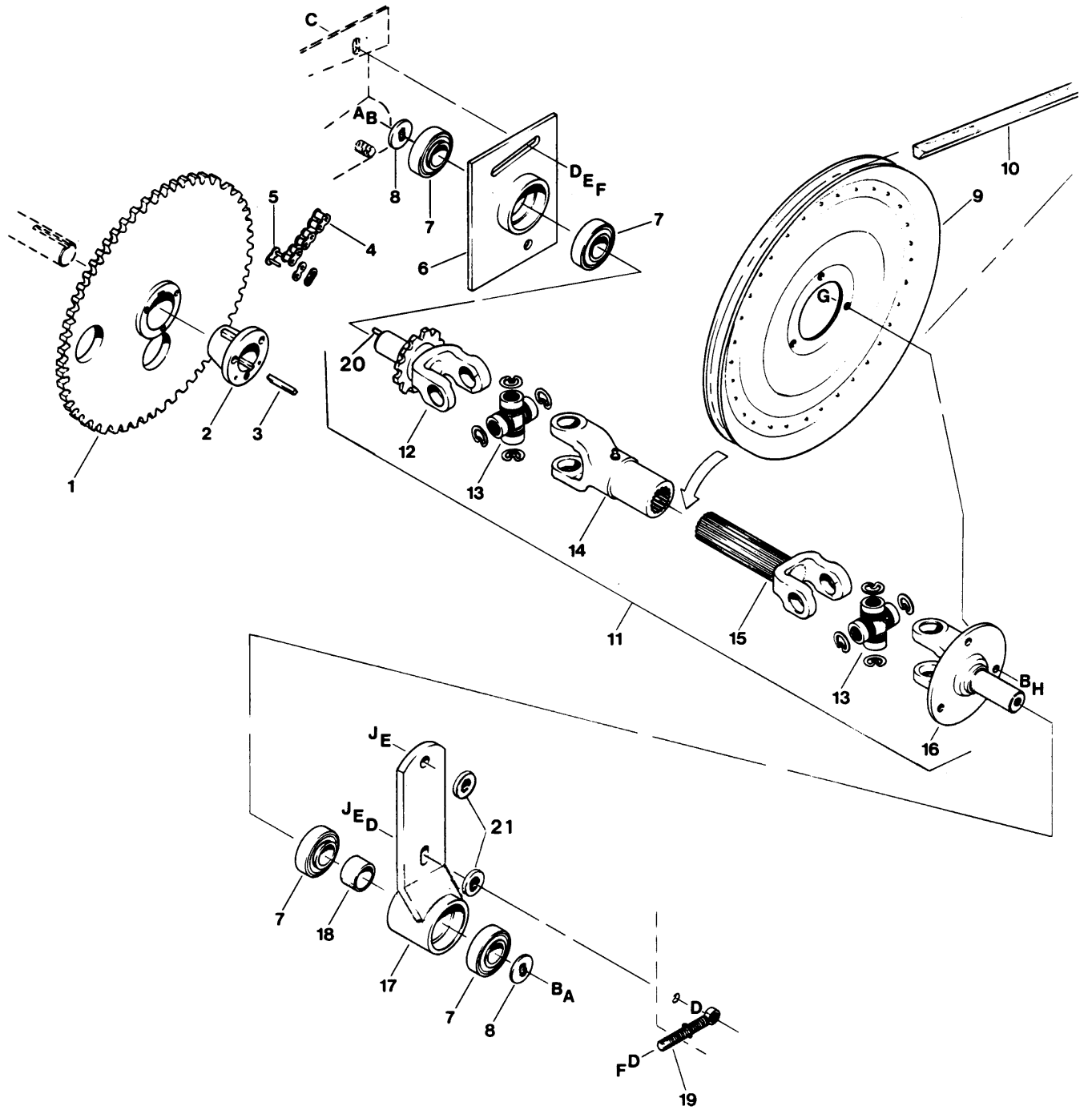
REEL

REF	PART NUMBER	DESCRIPTION	QTY	SERIAL NUMBER
1	36392	CAM - reel	1	
2	21936	BEARING - with collar	1	
3	30602	FLANGE - bearing.....	1	
4	30603	FLANGE - bearing, with lube fitting	1	
5	20535	WASHER - flat	12	
6	36410	SUPPORT - reel, R/H.....	1	
7	15325	WASHER - flat	1	
8	30519	BEARING - less collar	1	
9	36405	SHAFT - reel, R/H	1	
10	36350	TUBE - main, reel.....	1	
11	36368	ARM - reel, (see NOTE 1 below).....	10	-82885
	47300	ARM - reel, (see NOTE 1 below).....	10	82886-
12	36374	BAT - reel	5	
13	34813	HOLDER - bat	15	
14	36377	TUBE - finger, dimension (x) = 4 1/2 in. (115 mm)	2	
	36378	TUBE - finger, dimension (x) = 6 1/8 in. (155 mm)	3	
15	21940	BEARING - cam follower.....	5	
16	28346	BOLT - special, cam follower	5	
17	28790	BUSHING - plastic, reel arm	15	
18	34351	FINGER - pick-up, double (4 coil, .225" dia. wire).....	65	-115999
	47681	FINGER - pick-up, double (5 coil, .250" dia. wire).....	63	116000-
19	19183	HOLDER - finger	65	
20	B 2028	BAT ASSEMBLY - complete, includes items 11 to 19, 25, 26 and hardware F to M in proper quantities for one complete bat. (Available through WholeGoods only.)		
21	34583	COVER - cam follower	1	
22	30931	CAP - plastic.....	1	
23	15637	EYEBOLT	2	
24	18440	SPACER - tube.....	1	
25	47295	DISC - reel bushing	15	
26	34752	ARM - reel, left end of each bat.....	5	
27	115120	FINGER - pick-up, double, R/H end	2	
A	18637	WASHER - lock, 3/8 inch		
B	18590	NUT - hex, 3/8 NC		
C	19965	BOLT - round head, square neck, 3/8 NC x 1 inch		
D	30876	BOLT - hex head, 3/4 NC x 4 inch		
E	18640	WASHER - lock, 3/4 inch		
F	21755	BOLT - flange head, 5/16 NC x 1/2 inch		
G	30280	NUT - lock, smooth flange, 5/16 NC distorted thread		
H	21281	BOLT - round head, square neck, 5/16 NC x 3/4 inch		
J	21941	NUT - lock, jam 5/8 NC distorted thread		
K	21570	BOLT - hex head, 1/4 NC x 2 inch		
L	18724	NUT - lock, 1/4 NC distorted thread		
M	21488	BOLT - round head, square neck, 5/16 NC x 1 3/4 inch		
N	21472	BOLT - round head, square neck, 3/8 NC x 3/4 inch		
P	21484	BOLT - round head, square neck, 3/8 NC x 1 1/2 inch		
Q	18669	NUT - lock, 3/8 NC distorted thread		
~ f	REF	Indicates where hardware passes through frame member.		

NOTES:

(1) - If replacing one piece reel arm (36368) with cut-away version (47300), also order item 25 (47295 - DISC).

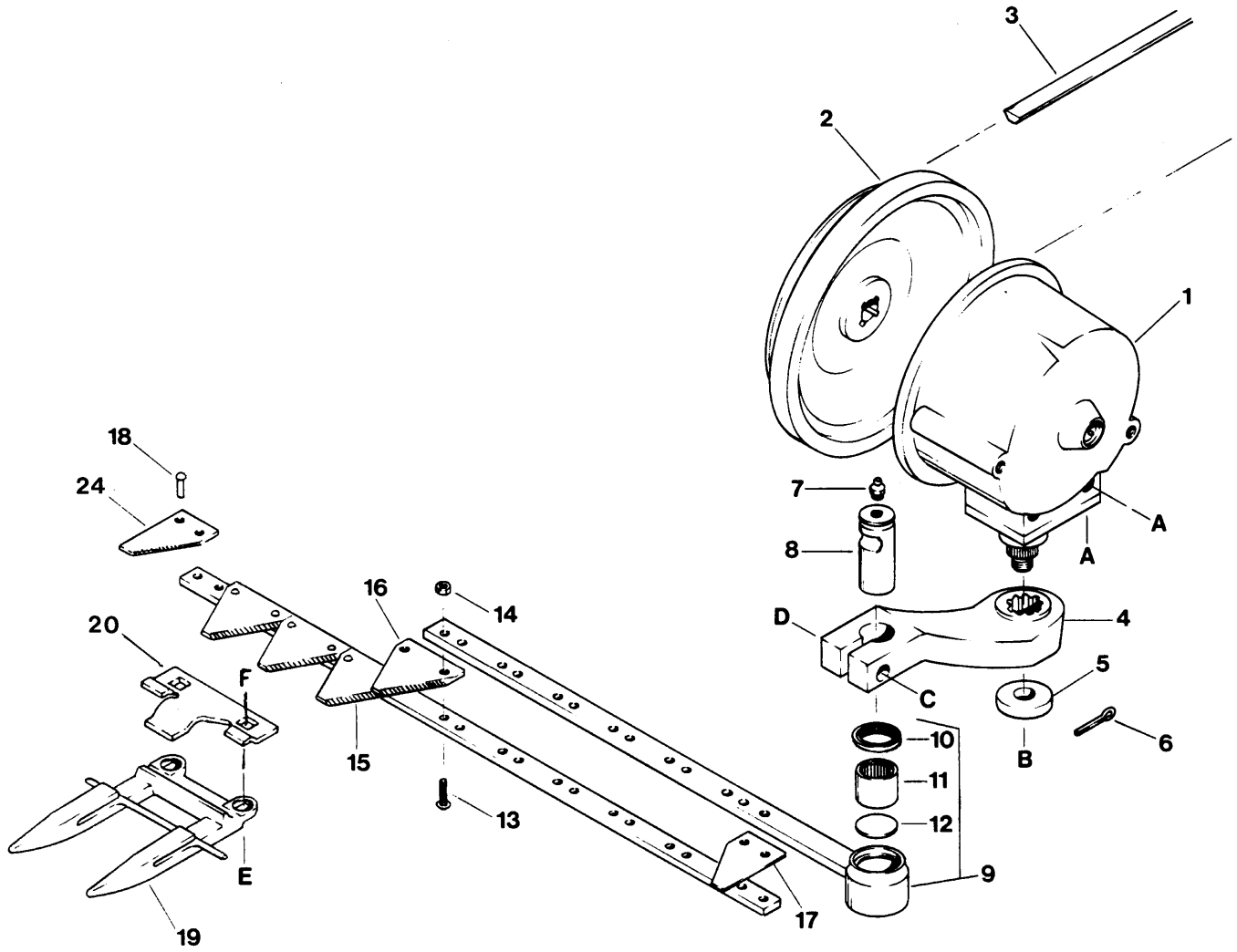
REEL DRIVE



REEL DRIVE

REF	PART NUMBER	DESCRIPTION	QTY	SERIAL NUMBER
1	36420	SPROCKET - reel drive.....	1	
2	21934	BUSHING - taper lock	1	
3	17194	KEY - 5/16 square x 2 inch.....	1	
4	30757	CHAIN - roller, # 60 x 61 links	1	
5	6636	LINK - connecting.....	1	
6	36423	SUPPORT - bearing.....	1	
7	36430	BEARING - ball, less collar	4	
8	36223	WASHER - flat, slotted I.D.	2	
9	36240	PULLEY - reel drive.....	1	
10	36013	BELT - reel drive	1	
11	36224	DRIVELINE - reel, includes items 12 to 16, and 20	1	
12	36672	YOKE - with sprocket and shaft, includes item 20	1	
13	30622	CROSS and BEARING KIT	2	
14	36675	YOKE - with spline tube.....	1	
15	36674	YOKE - with spline shaft.....	1	
16	36673	YOKE - with flange and shaft	1	
17	36244	ARM - bearing support	1	
18	36250	SPACER - bearing.....	1	
19	36252	ROD - adjuster	1	
20	30907	PIN - roll, 1/8 x 3/4 inch	1	
21	42592	WASHER - flat, belt alignment	A/R	
A	21567	BOLT - hex head, 3/8 NC x 3/4 inch		
B	18637	WASHER - lock, 3/8 inch		
C	21471	BOLT - round head, square neck, 1/2 NC x 1 1/4 inch		
D	18599	WASHER - flat, 17/32 inch I.D.		
E	18638	WASHER - lock, 1/2 inch		
F	18591	NUT - hex, 1/2 NC		
G	20077	BOLT - hex head, 3/8 NC x 1 inch		
H	18590	NUT - hex, 3/8 NC		
J	21565	BOLT - hex head, 1/2 NC x 1 3/4 inch		

SICKLE AND DRIVE



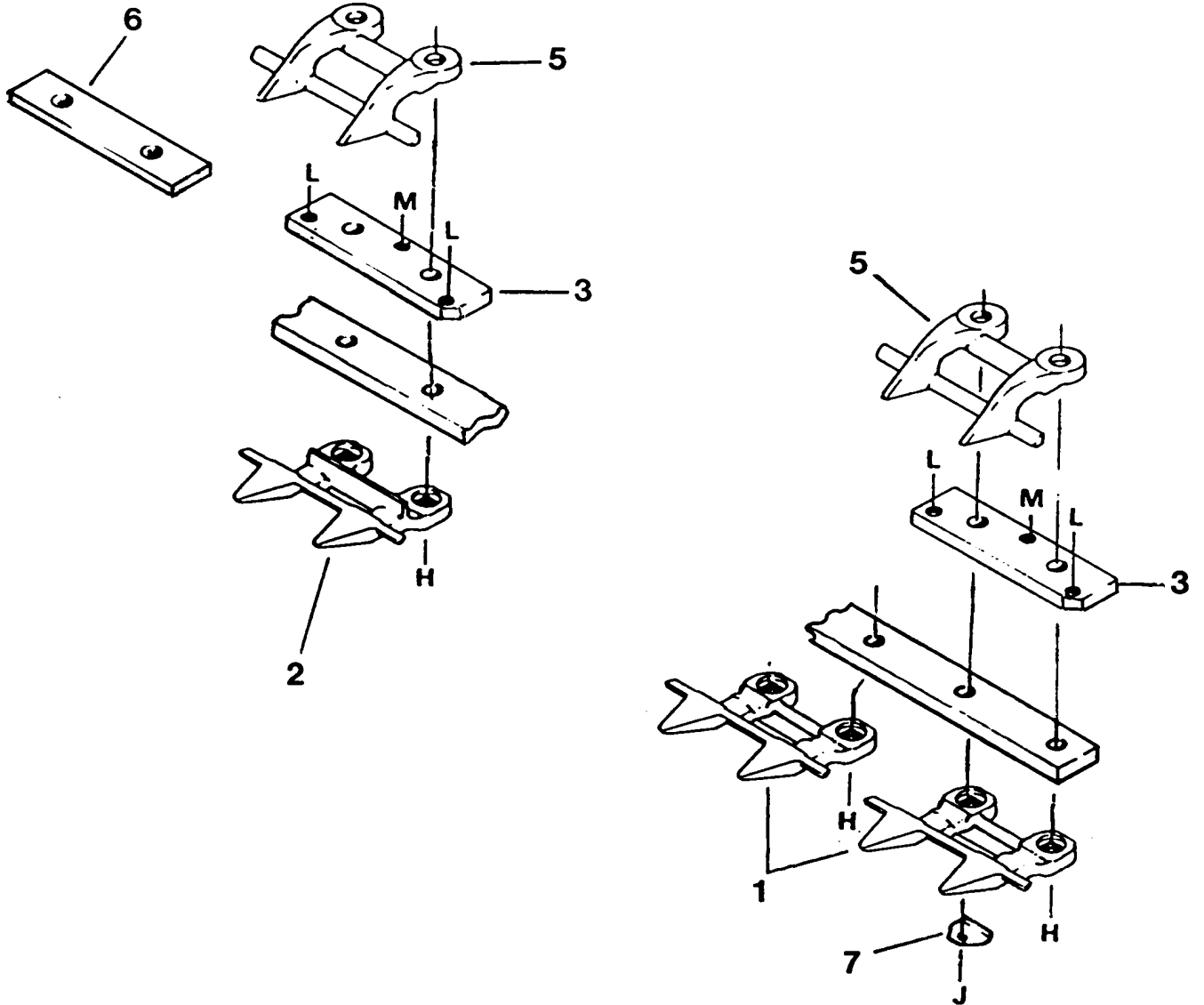
SICKLE AND DRIVE

REF	PART NUMBER	DESCRIPTION	QTY	SERIAL NUMBER
1	REF	DRIVE - sickle, see page 21	1	
2	36000	PULLEY - sickle drive.....	1	
3	36012	BELT - sickle drive	1	
4	33834	ARM - drive.....	1	
5	REF	WASHER - flat, see page 21	1	
6	18648	PIN - cotter, 3/16 x 1 1/4 inch.....	1	
7	21887	FITTING - lube, straight 1/8 inch NPT.....	1	
8	26321	PIN - sickle head	1	-124499
	115082	PIN - sickle head	1	124500-
9	36015	HEAD - sickle, includes items 10-12, see Note 1.....	1	-124499
	115121	HEAD - sickle, includes items 10-12	1	124500-
10	37930	SEAL - sickle head (install with lip facing outwards), see Note 1.....	1	-124499
	113222	SEAL - sickle head (install with lip facing outwards)	1	124500-
11	30607	BEARING - needle	1	
12	34389	PLUG - sickle head	1	
13	30668	SCREW - ribbed neck, # 12 NC x 1 inch	13	
	30696	SCREW - ribbed neck, #12 NC x 5/8 inch	65	
14	30669	NUT - lock, # 12 NC distorted thread	78	
15	36931	SICKLE ASSEMBLY - less head.....	1	
16	34390	SECTION - sickle, over-serrated (Kondex).....	37	
	118475	SECTION - sickle, over-serrated (Busatis).....	OPT	
17	34391	SECTION - left end, smooth	1	
18	7258	RIVET - 0.208 x 5/8 inch	65	-77000
19	28014	SPECIAL GUARD - sickle, first two at left end only	2	
	28013	GUARD - sickle, used at all other positions	17	
20	28815	CLIP - hold down.....	16	
24	36936	SECTION - right end, serrated.....	1	
A	30809	BOLT - hex head, 5/8 NC x 2 inch, Grade 8		-74321
	30861	BOLT - hex flange head, 5/8 NF x 2 inch, Grade 8.....		74322-
B	REF	NUT - slotted hex, see page 21		
C	30922	BOLT - hex head, 5/8 NC x 2 3/4 inch		
D	18666	NUT - lock, 5/8 NC distorted thread		
E	8218	BOLT - round head, square neck, 7/16 NC x 1 1/2 inch		
	21468	BOLT - round head, square neck, 7/16 NC x 1 3/4 inch - through shoe at extreme right end of header		
F	18654	NUT - hex, 7/16 NC		

NOTES:

1. Newer sickle head 115121 and seal 113222 may be used to replace 36015 head and 37930 seal, respectively. When making either of these substitutions, also order item 8, 115082 sickle head pin. Pin 115082 must be used with seal 113222.

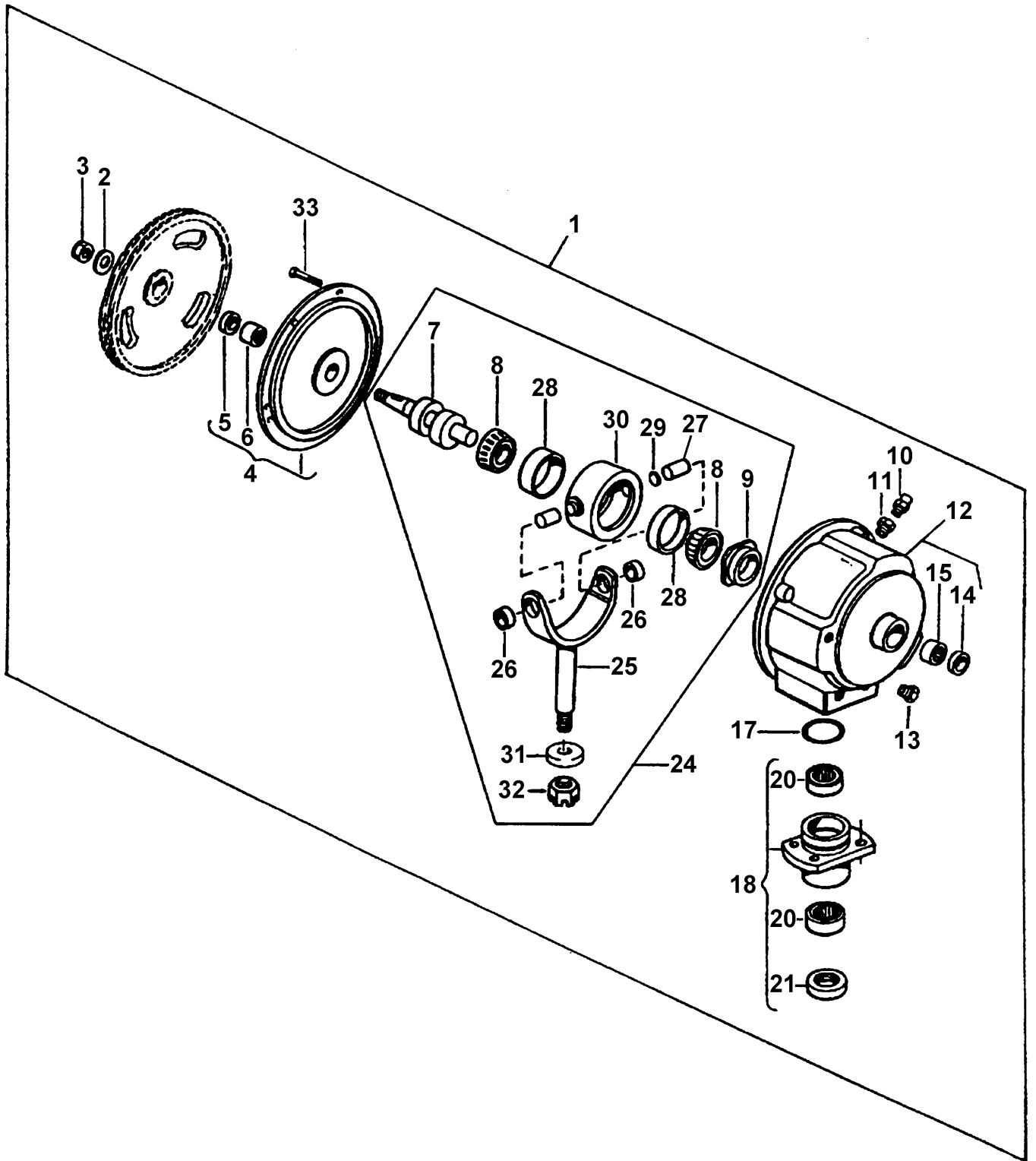
SICKLE STUB GUARDS (OPTION)



SICKLE STUB GUARDS (OPTION)

REF	PART NUMBER	DESCRIPTION	QTY	SERIAL NUMBER
	B 2514	STUB GUARD CONVERSION KIT - 9' Header, complete		
1	34975	SPECIAL END GUARD - no trash bar, first two positions at L/H end.....	2	
2	34974	GUARD - stub	17	
3	34980	BAR - adjuster	19	
5	34359	GUIDE - sickle.....	19	
6	47324	BAR - spacer - used between cutterbar and adjuster bar at R/H end.....	1	
7	REF	CLIP - skid shoe front support		
H	30862	BOLT - round head, square neck, 7/16 NC x 2 1/2 inch (used at all guards except at skid shoe clips)		
J	21665	BOLT - round head, square neck, 7/16 NC x 2 3/4 inch (used at skid shoe clips)		
L	50119	BOLT - hex head, 3/8 NC x 3/4 inch, stainless steel		
M	50120	BOLT - hex head, 3/8 NC x 1 inch, stainless steel		

SICKLE DRIVE



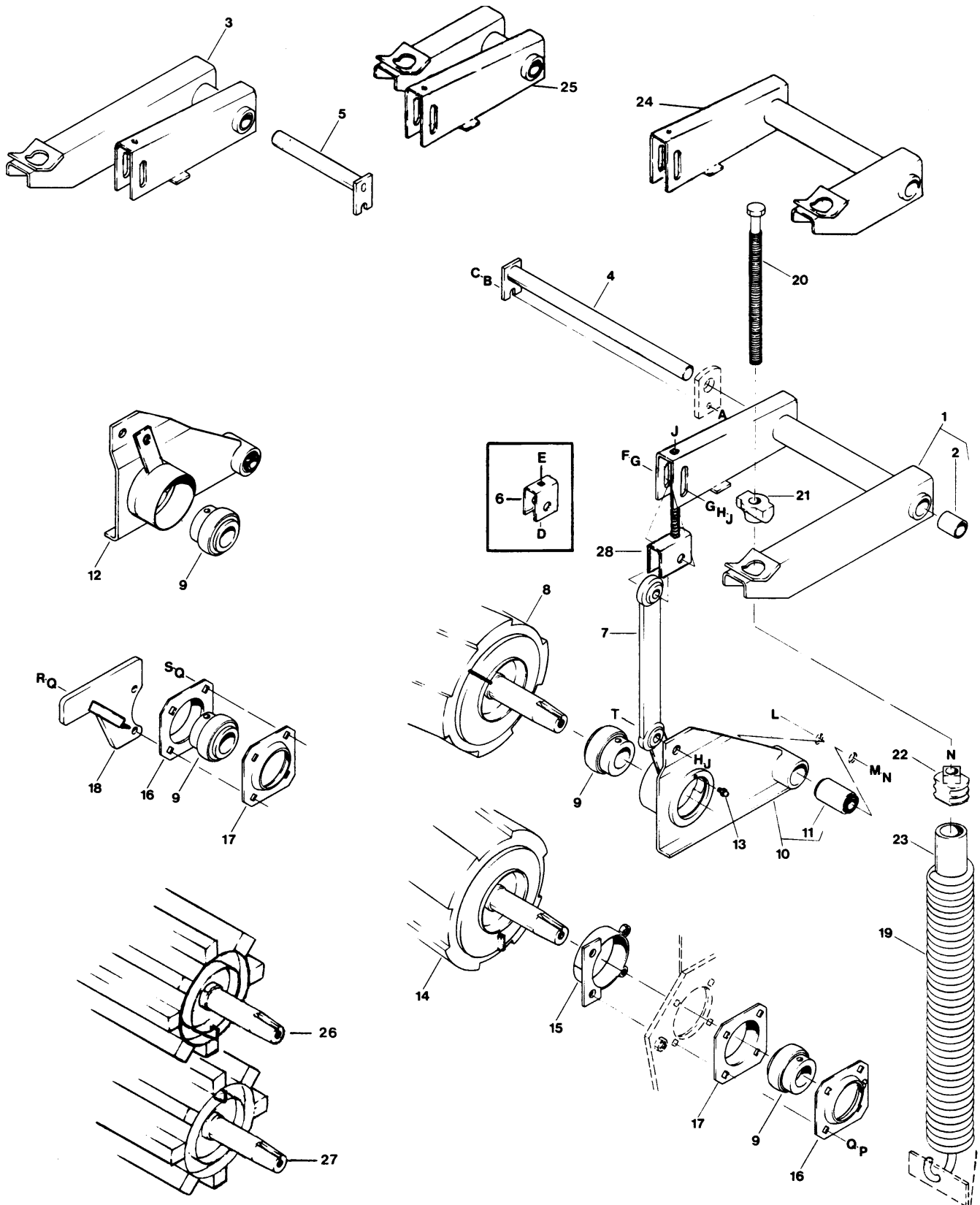
SICKLE DRIVE

REF	PART NUMBER	DESCRIPTION	QTY	SERIAL NUMBER
1	26320	DRIVE - sickle, complete - includes mounting hardware (see Note 1)	1	
2	21417	WASHER - flat, .78 I.D. x 1 5/8 O.D. X 1/8 inch thick	1	
3	18689	NUT - lock, 3/4 inch NC distorted thread	1	
4	21421	COVER ASSEMBLY - includes items 5 & 6	1	
5	30814	SEAL - oil.....	1	
6	21420	BEARING - needle	1	
7	21712	SHAFT - drive.....	1	
8	21512	BEARING - cone	2	
9	21424	NUT - stake, 1 15/16 - 20 hex spiral	1	
10	21425	VALVE - relief	1	
11	21024	FITTING - reducer bushing, 3/8 x 1/8 pipe thread	1	
12	26319	HOUSING ASSEMBLY - including #14, 15 and mounting bolts	1	
13	21151	PLUG - 3/8 NPT	1	
14	30815	SEAL - oil.....	1	
15	21513	BEARING - needle	1	
17	21514	O-RING - 2 5/8 x 2 7/8 x 1/8 inch.....	1	
18	26318	CAP ASSEMBLY - includes items 20 & 21	1	
20	21516	BEARING - needle	2	
21	21517	SEAL - oil.....	1	
24	50179	YOKE/HOUSING ASSEMBLY, includes items 25 - 32 (see Notes 1 & 2) ...	1	
	47988	YOKE/HOUSING ASSEMBLY, includes items 7 - 9 and 25 - 32	1	
25	NSS	YOKE - output, with bushings (order 50179).....	1	
26	NSS	BUSHING - bronze (order 50179)	2	
27	NSS	SPINDLE (order 50179)	2	
28	21519	BEARING - cup	2	
29	NSS	PLUG - nylon, 7/8 dia. x 1/64 inch thick (order 50179)	2	
30	NSS	HOUSING - bearing (order 50179).....	1	
31	21717	WASHER - flat, for 3/4 NC thread (see Note 1)	1	
	43981	WASHER - flat, for 7/8 NF thread (see Note 1)	1	
32	5440	NUT - slotted hex, 3/4 NC (see Note 1)	1	
	1166	NUT - slotted hex, 7/8 NF (see Note 1).....	1	
33	30269	BOLT - flange head, 5/16 NC x 1 inch	6	
	NSS	Not Serviced Separately		

NOTES:

- Starting with 1996 production, a running change is taking place which increases yoke thread size from 3/4 NC to 7/8 NF.
- Starting in 1998, stock of 50179 will not be replenished, and will be superseded by 47988 when stock is depleted.

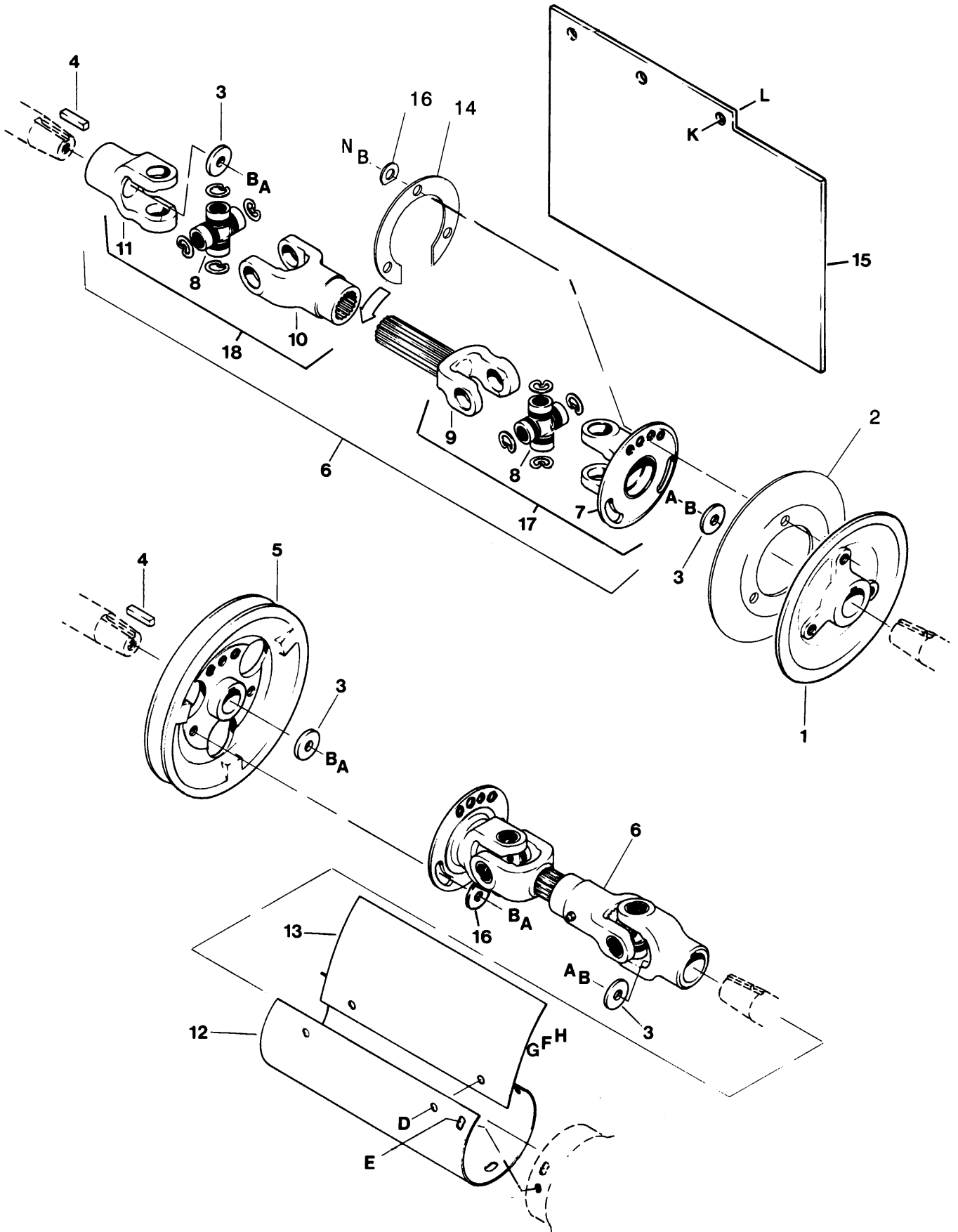
ROLLS & FLOAT ARMS



ROLLS & FLOAT ARMS

REF	PART NUMBER	DESCRIPTION	QTY	SERIAL NUMBER
NOTE: (RR) = Rubber Roll Units (SR) = Steel Roll Units				
1	36470	ARM - float, left hand - with bushings (RR)	1	
2	36025	BUSHING - bronze	4	
3	36471	ARM - float, right hand - with bushings (RR)	1	
4	36495	SHAFT - left	1	
5	36496	SHAFT - right	1	
6	36284	CHANNEL - link	2	-76500
7	36280	LINK - roll arm	2	
8	36007	ROLL - rubber, upper	1	
9	30031	BEARING - with collar	4	
10	36260	ARM - roll, left hand - with bushing	1	
11	30574	BUSHING - rubber	2	
12	36261	ARM - roll, right hand - with bushing	1	
13	18671	FITTING - lube, straight	2	
14	36006	ROLL - rubber, lower	1	
15	36285	RING - lower	2	
16	47070	FLANGE - bearing, with 90° lube fitting	2	
17	30576	FLANGE - bearing	2	
18	36121	STOP - right hand (RR) [as shown]	1	
	36124	STOP - right hand (SR) [no welded angle]	1	
19	36009	SPRING - float	2	
20	36021	DRAWBOLT - spring	2	
21	36011	TRUNNION	2	
22	36010	INSERT - spring	2	
23	36022	TUBE - plastic	2	
24	36713	ARM - float, left hand - with bushings [item 2] (SR)	1	
25	36714	ARM - float, right hand - with bushings [item 2] (SR)	1	
26	36695	ROLL - steel, upper	1	
27	36696	ROLL - steel, lower	1	
28	36417	CHANNEL - with stud, link	2	76501-
A	20077	BOLT - hex head, 3/8 NC x 1 inch		
B	18598	WASHER - flat, 13/32 inch I.D.		
C	18669	NUT - lock, 3/8 NC distorted thread		
D	30432	BOLT - round head, square neck, 3/8 NC x 2 1/4 inch		
E	18590	NUT - hex, 3/8 NC		
F	30922	BOLT - hex head, 5/8 NC x 2 3/4 inch		
G	18600	WASHER - flat, 21/32 inch I.D.		
H	18639	WASHER - lock, 5/8 inch		
J	18592	NUT - hex, 5/8 NC		
L	21733	BOLT - hex head, 3/4 NC x 4 1/2 inch		
M	18640	WASHER - lock, 3/4 inch		
N	18593	NUT - hex, 3/4 NC		
P	18723	BOLT - hex head, 1/2 NC x 1 1/2 inch		
Q	18638	WASHER - lock, 1/2 inch		
R	21565	BOLT - hex head, 1/2 NC x 1 3/4 inch		
S	21491	BOLT - hex head, 1/2 NC x 1 1/4 inch		
T	30664	BOLT - hex head, 5/8 NC x 2 1/4 inch		

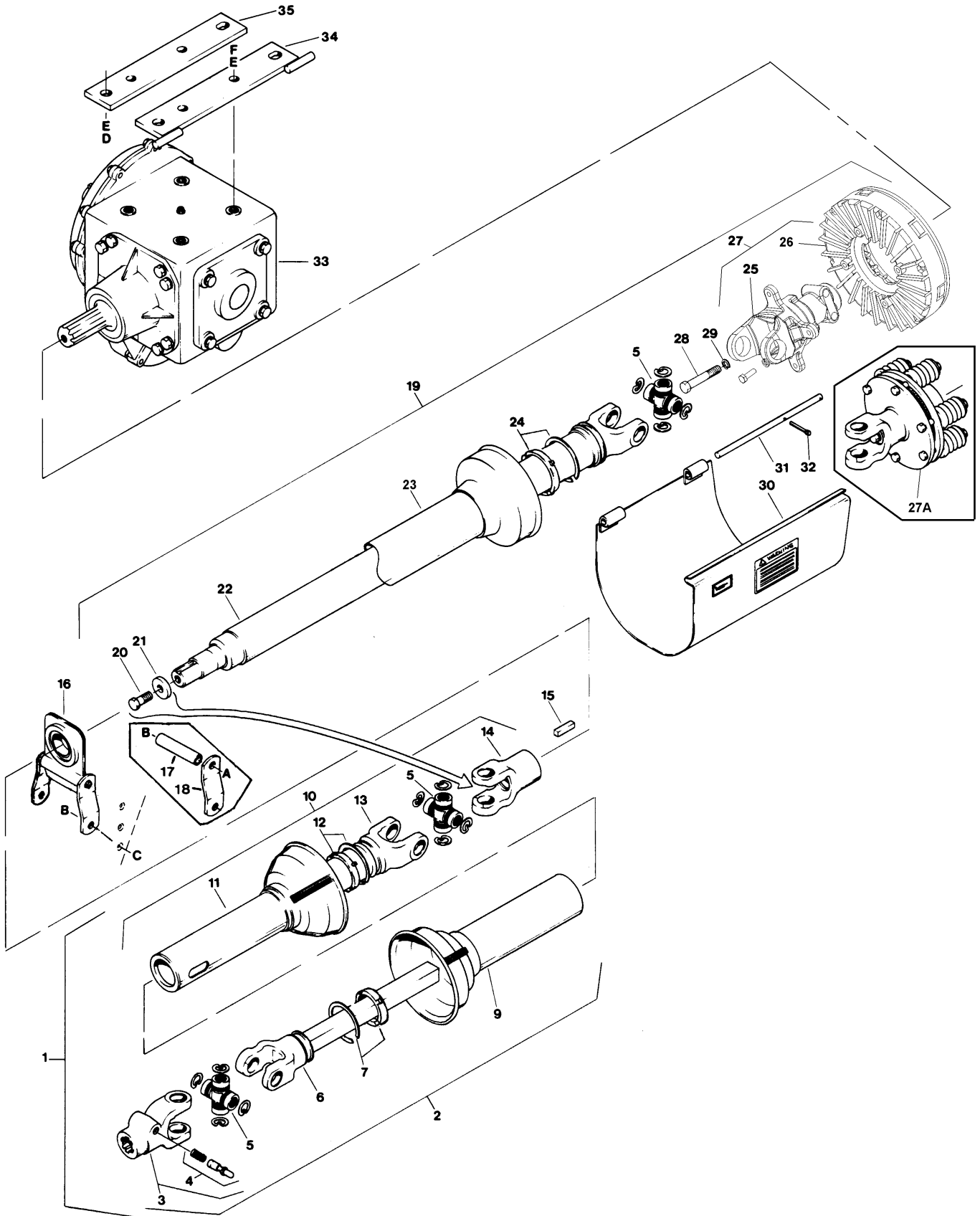
DRIVES GROUP



DRIVES GROUP

REF	PART NUMBER	DESCRIPTION	QTY	SERIAL NUMBER
1	36001	PULLEY - half, reel drive	1	
2	36236	PULLEY - half.....	1	
3	4761	WASHER - flat	4	
4	36256	KEY - 3/8 square x 1 9/16 inch.....	2	
5	36002	PULLEY - sickle drive.....	1	
6	36220	DRIVELINE - roll, includes items 7 - 11	2	
7	36668	YOKE - with plate	2	
8	30622	CROSS and BEARING KIT	4	
9	36669	YOKE - with spline shaft.....	2	
10	36670	YOKE - with spline tube.....	2	
11	36671	YOKE - with tapered bore.....	2	
12	36116	SHIELD - lower driveline, with decals.....	1	
13	36118	SHIELD - plastic	1	
14	36257	SHIM - pulley	1	
15	36140	FLAP - rubber	1	
16	36229	WASHER - trimmed	6	
17	36687	JOINT ASSEMBLY - with shaft	1	
18	36688	JOINT ASSEMBLY - with tube	1	
A	21491	BOLT - hex head, 1/2 NC x 1 1/4 inch		
B	18638	WASHER - lock, 1/2 inch		
D	21567	BOLT - hex head, 3/8 NC x 3/4 inch		
E	30693	BOLT - serrated flange head, 3/8 NC x 1/2 inch		
F	18637	WASHER - lock, 3/8 inch		
G	18598	WASHER - flat, 13/32 inch I.D.		
H	18590	NUT - hex, 3/8 NC		
K	21863	BOLT - round head, square neck, 3/8 NC x 3/4 inch		
L	30228	NUT - lock, smooth flange, 3/8 NC distorted thread		
N	18723	BOLT - hex head, 1/2 NC x 1 1/2 inch		

DRIVELINES & GEAR DRIVE

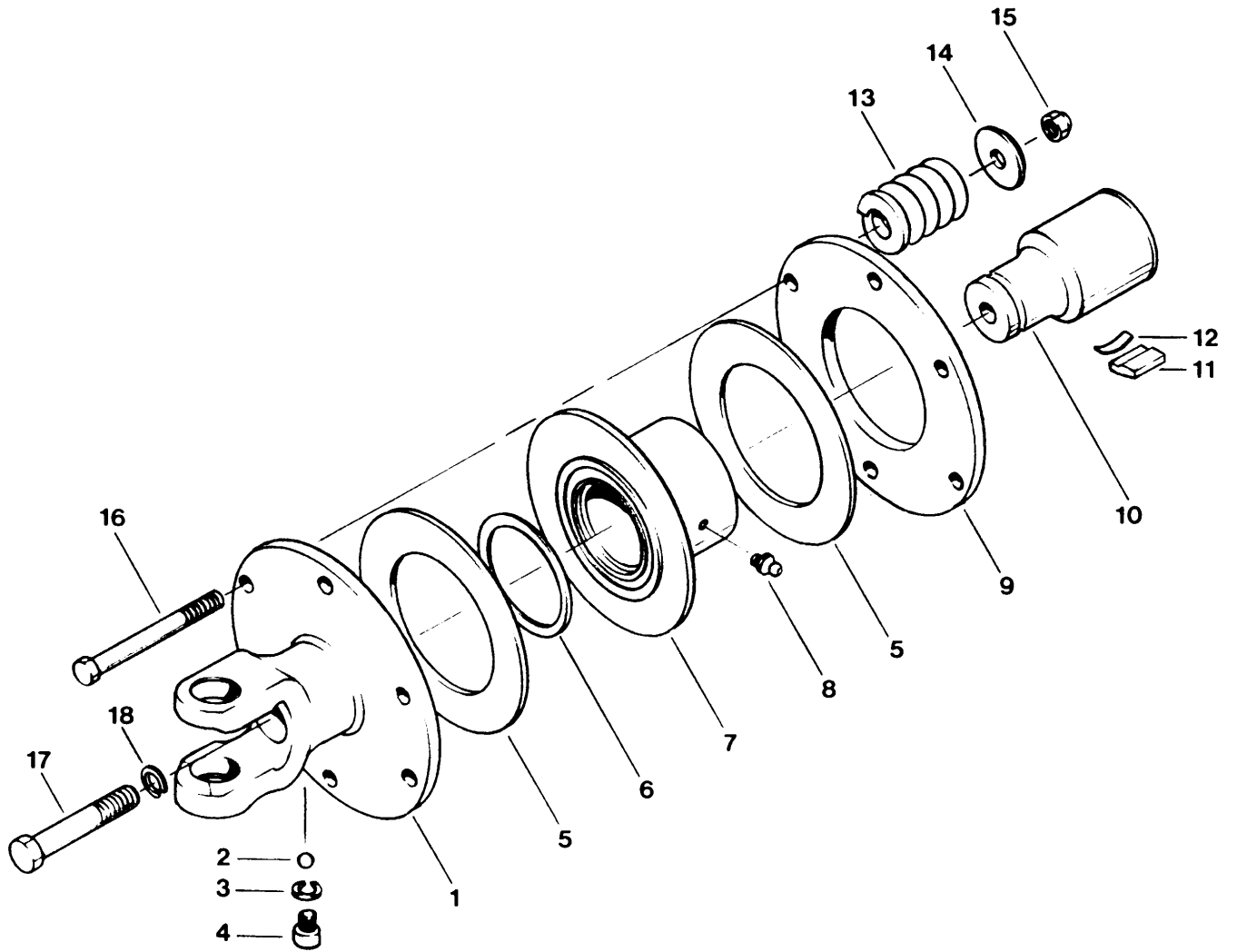


DRIVELINES & GEAR DRIVE

REF	PART NUMBER	DESCRIPTION	QTY	SERIAL NUMBER
1	36209	DRIVELINE - telescoping, includes items 2 & 10.....	1	
2	36685	JOINT - with shaft and shield, includes items 3 - 9.....	1	
3	36641	YOKE - lock, includes item 4.....	1	
4	36642	KIT - repair, includes pin and spring.....	1	
5	36649	CROSS and BEARING KIT.....	3	
6	NSS	YOKE - with shaft, order item 2.....	1	
7	32804	BEARING KIT - outer shield, includes bearing and retainer.....	1	
9	36643	SHIELD - outer.....	1	
10	36686	JOINT - with tube and shield, includes items 5, 7, 11-14.....	1	
11	36645	SHIELD - inner.....	1	
12	32805	BEARING KIT - inner shield, includes bearing and retainer.....	1	
13	NSS	YOKE - with tube, order item 10.....	1	
14	36650	YOKE - end.....	1	
15	36256	KEY - 3/8 square x 1 9/16 inch.....	1	
16	36217	BEARING - hanger.....	1	
17	36208	SPACER.....	1	-74321
18	36204	SUPPORT - hanger bearing.....	2	-74321
19	36210	DRIVELINE - fixed length, includes items 5, 20-24 and 27A.....	1	-76500
	115752	DRIVELINE - fixed length, includes items 5 and 20-29 (was 36237).....	1	76501-
20	36679	BOLT - drilled hex head, 1/2 NF x 1 1/4 inch.....	1	
21	18770	WASHER - flat.....	1	
22	36653	YOKE - with shaft.....	1	-76500
	36238	YOKE - with shaft.....	1	76501-
23	36654	SHIELD - driveline, with centralizer.....	1	-76500
	36239	SHIELD - driveline, with centralizer.....	1	76501-
24	32802	BEARING KIT - shield, includes bearing and retainer.....	1	
25	141170	YOKE & HUB ASSEMBLY.....	1	150559-
26	141171	CLUTCH PACK.....	1	150559-
	141172	DISC - friction, included in clutch pack 141171.....	2	150559-
27	141173	CLUTCH ASSEMBLY, consists of items 25 & 26.....	1	150559-
27A	36658	CLUTCH ASSEMBLY - see Page 30 for components.....	1	-150558
28	36677	BOLT - special, hex head, 1/2 NF with thread coating.....	1	
29	18638	WASHER - lock, 1/2 inch.....	1	
30	36105	SHIELD - clutch, with decals.....	1	
31	36108	PIN - shield hinge.....	1	
32	18648	PIN - cotter, 3/16 x 1 1/4 inch.....	2	
33	36008	DRIVE - gear, see page 32 for components.....	1	
34	36230	SUPPORT - gear drive, with pins.....	1	
35	36231	SUPPORT - gear drive.....	1	
A	30209	BOLT - hex head, 1/2 NC x 4 1/2 inch.....		-74321
B	18697	NUT - lock, 1/2 NC distorted thread		
C	18723	BOLT - hex head, 1/2 NC x 1 1/2 inch		
D	21871	BOLT - hex head, 5/8 NC x 2 1/2 inch thread full length		
E	18639	WASHER - lock, 5/8 inch		
F	21594	BOLT - hex head, 5/8 NC x 1 1/2 inch		

CLUTCH ASSEMBLY

Serial Number 150558 and below

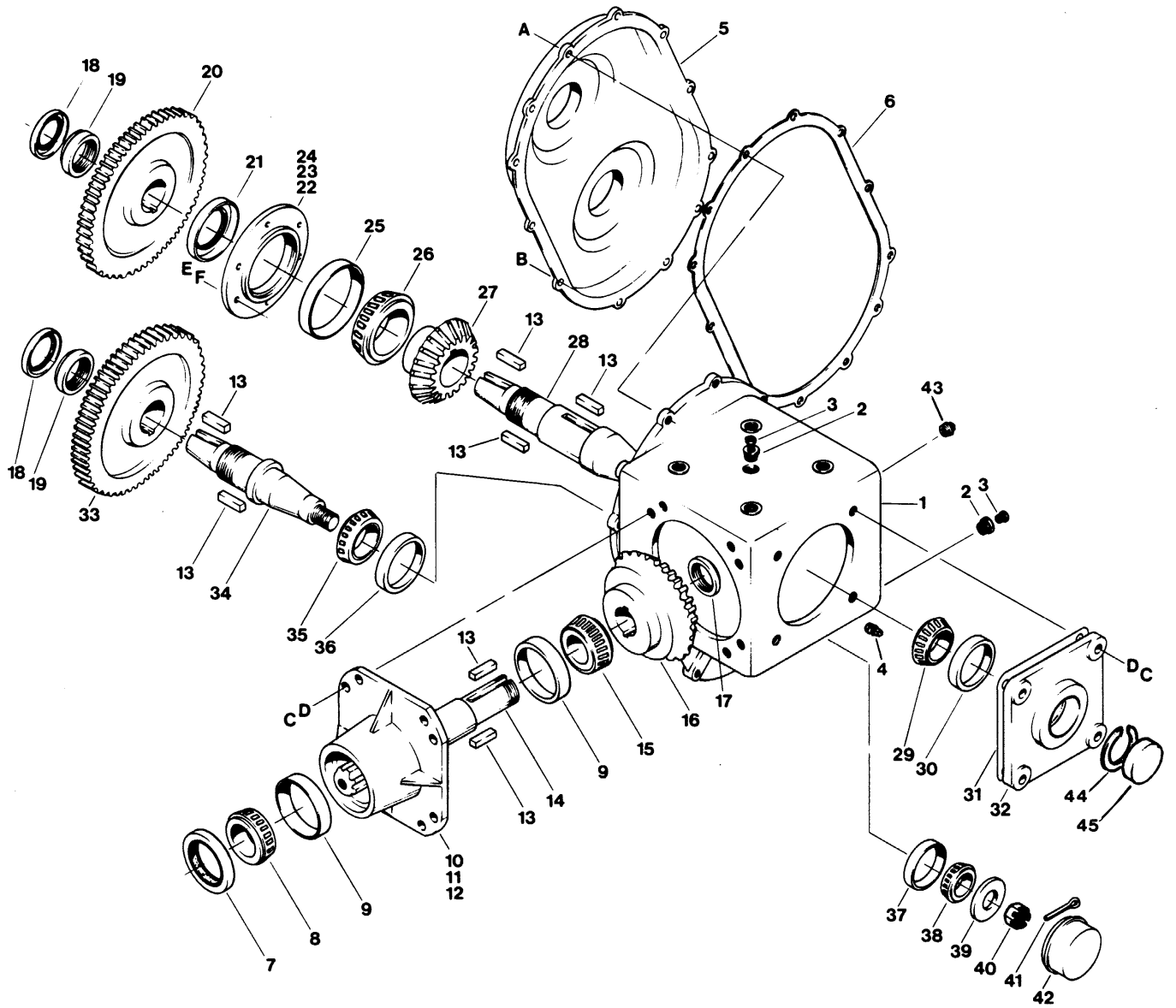


CLUTCH ASSEMBLY
Serial Number 150558 and below

REF	PART NUMBER	DESCRIPTION	QTY	SERIAL NUMBER
..	36658	CLUTCH ASSEMBLY - complete.....	1	
1	36652	YOKE - with plate	1	
2	36662	BALL - 5/16 inch.....	14	
3	18637	WASHER - lock, 3/8 inch	1	
4	36661	SCREW - socket head, 3/8 NC x 17/64 inch.....	1	
5	36665	PAD - friction	2	
6	36666	SEAL - housing.....	1	
7	36678	HOUSING - drive, with flange	1	
8	21887	FITTING - lube, straight 1/8 inch NPT.....	3	
9	36676	PLATE - clutch	1	
10	36667	DRIVE - inner	1	
11	36663	KEY - drive	2	
12	36664	SPRING - leaf.....	2	
13	36659	SPRING - compression.....	6	
14	36660	WASHER - clutch spring.....	6	
15	18669	NUT - lock, 3/8 NC distorted thread	6	
16	21593	BOLT - hex head, 3/8 NC x 4 inch	6	
17	36677	BOLT - special, hex head, 1/2 NF with thread coating.....	1	
18	18638	WASHER - lock, 1/2 inch	1	

NOTE: These parts have been discontinued by the supplier. Availability is limited. If part is out of stock, replace entire clutch assembly with assembly 141173 (item 27 on page 29).

GEAR DRIVE ASSEMBLY



GEAR DRIVE ASSEMBLY

REF	PART NUMBER	DESCRIPTION	QTY	SERIAL NUMBER
..	36008	GEAR DRIVE ASSEMBLY - complete	1	
1	NSS	HOUSING - drive.....	1	
2	21024	FITTING - reducer bushing, 3/8 x 1/8 pipe thread	2	
3	21425	BREATHER - 1/8 NPT	2	
4	21791	PLUG - square head, 3/8 NPT	2	
5	30767	COVER - output	1	
6	30797	GASKET - output cover.....	1	
7	30793	SEAL - input	1	
8	30776	BEARING - cone	1	
9	30774	BEARING - cup	2	
10	NSS	HUB - input.....	1	
11	NSS	SHIM - hub	A/R	-85999
	NSS	O-RING - input hub	1	86000-
12	30796	GASKET - hub.....	1	-85999
13	36256	KEY - 3/8 square x 1 9/16 inch.....	7	
14	30785	SHAFT - input.....	1	
15	30775	BEARING - cone	1	
16	30768	GEAR - bevel, 27 teeth.....	1	
17	30782	NUT - stake, 1 1/2 inch - 18	1	
18	30788	SEAL - output	2	
19	30781	NUT - stake, 1 5/8 inch - 18	2	
20	NSS	GEAR - spur, 68 teeth, 1 inch wide	1	
21	30790	SEAL - inner	1	
22	NSS	COVER - inner	1	
23	NSS	GASKET - inner cover.....	1	
24	30798	SHIM - bearing	A/R	
25	30780	BEARING - cup	1	
26	30779	BEARING - cone	1	
27	30769	GEAR - bevel, 20 teeth.....	1	
28	NSS	SHAFT - output, upper	1	
29	30772	BEARING - cone	1	
30	30773	BEARING - cup	1	
31	NSS	SHIM - housing cover	A/R	-85999
	NSS	O-RING - housing cover.....	1	86000-
32	NSS	COVER - housing.....	1	
33	NSS	GEAR - spur, 68 teeth, 1 1/8 inch wide	1	
34	NSS	SHAFT - output, lower.....	1	
35	30778	BEARING - cone	1	
36	30777	BEARING - cup	1	
37	7900	BEARING - cup	1	
38	21376	BEARING - cone	1	
39	NSS	SPACER.....	1	
40	1166	NUT - slotted, 7/8 NF	1	
41	18648	PIN - cotter, 3/16 x 1 1/4 inch	1	
42	30520	CAP - lower drive.....	1	
43	NSS	PLUG - square head, 1/2 NPT	1	
44	30834	RING - retaining, internal.....	1	
45	30837	CAP - upper drive.....	1	
A	NSS	BOLT - shoulder, 5/16 x 5/8 inch, 3/16 NC		-85999
	NSS	BOLT - shoulder, 5/16 x 5/8 inch, 1/4 NC		86000-
B	21558	BOLT - hex head, 5/16 NC x 3/4 inch		
C	21491	BOLT - hex head, 1/2 NC x 1 1/4 inch		
D	18638	WASHER - lock, 1/2 inch		
E	21087	BOLT - hex head, 5/16 NC x 1 inch		
F	18636	WASHER - lock, 5/16 inch		

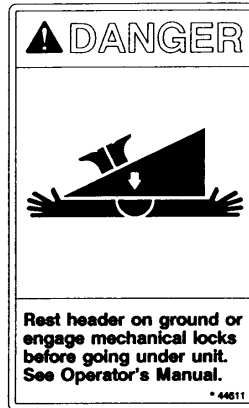
DECALS and REFLECTORS



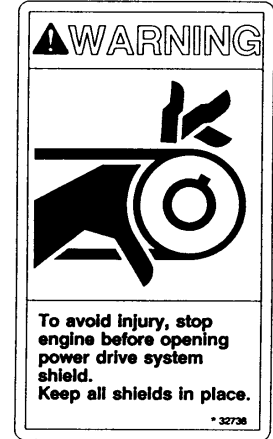
1



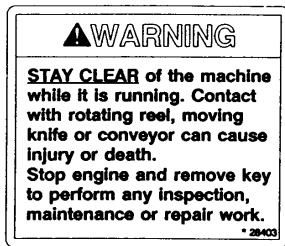
2



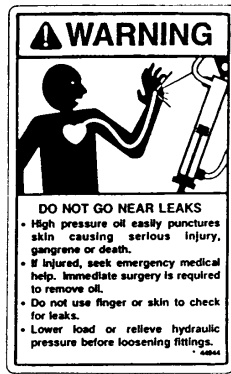
3



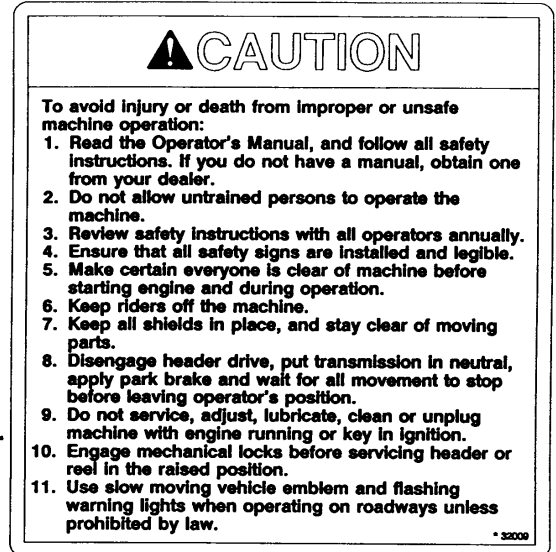
4



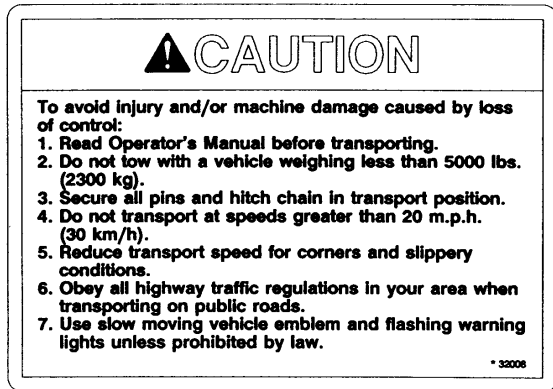
5



14



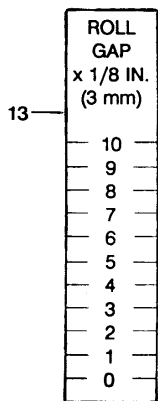
6



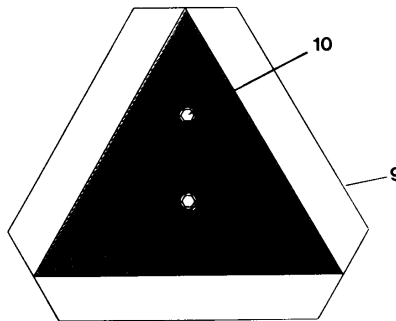
7



8

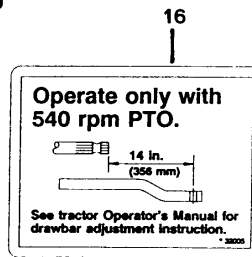


13

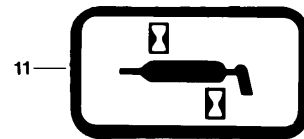


10

9



16



11

DECALS and REFLECTORS

REF	PART NUMBER	DESCRIPTION	QTY	SERIAL NUMBER
1	30316	DECAL - DANGER: Rotating Driveline		
2	36651	DECAL - DANGER: Driveline Shield Missing		
3	44611	DECAL - DANGER: Servicing Raised Header		
4	32738	DECAL - WARNING: Shields and Guards		
5	28403	DECAL - WARNING: Clear While Running		
6	32009	DECAL - CAUTION: General Safety		
7	32008	DECAL - CAUTION: Transport Safety		
8	115147	REFLECTOR – red (was 26694)		
	115145	REFLECTOR – Day-Glow Orange		
9	21032	REFLECTOR - Slow Moving Vehicle		
10	21055	SCREW - hex washer head, 1/4 NC x 1/2 inch thread forming		
11	23163	DECAL - 10 hour grease		
	23165	DECAL - 50 hour grease		
	25929	DECAL - 5 hour grease		-124499
	23164	DECAL – 25 hour grease		124500-
13	36310	DECAL - Roll Gap		76501-
14	44944	DECAL - WARNING: Hydraulic Oil Leaks		
16	32005	DECAL - 540 rpm PTO		

PAINT

23951	PAINT - black, spray can (25 – 35 Gloss Level)	-124499
23955	PAINT - black, 1 litre (25 – 35 Gloss Level)	-124499
135148	PAINT - black, spray can (55 – 65 Gloss Level) (was 25990).....	124500-
25991	PAINT - black, 1 litre (55 – 65 Gloss Level)	124500-
32879	PAINT - spray can, white	
23957	PAINT - white, 1 litre	
23917	PAINT - spray can, red	-82885
23950	PAINT - spray can, red	82886-
32880	PAINT - red, 1 litre.....	82886-

PRODUCT IDENTIFICATION DECALS



2

3

MacDon —1

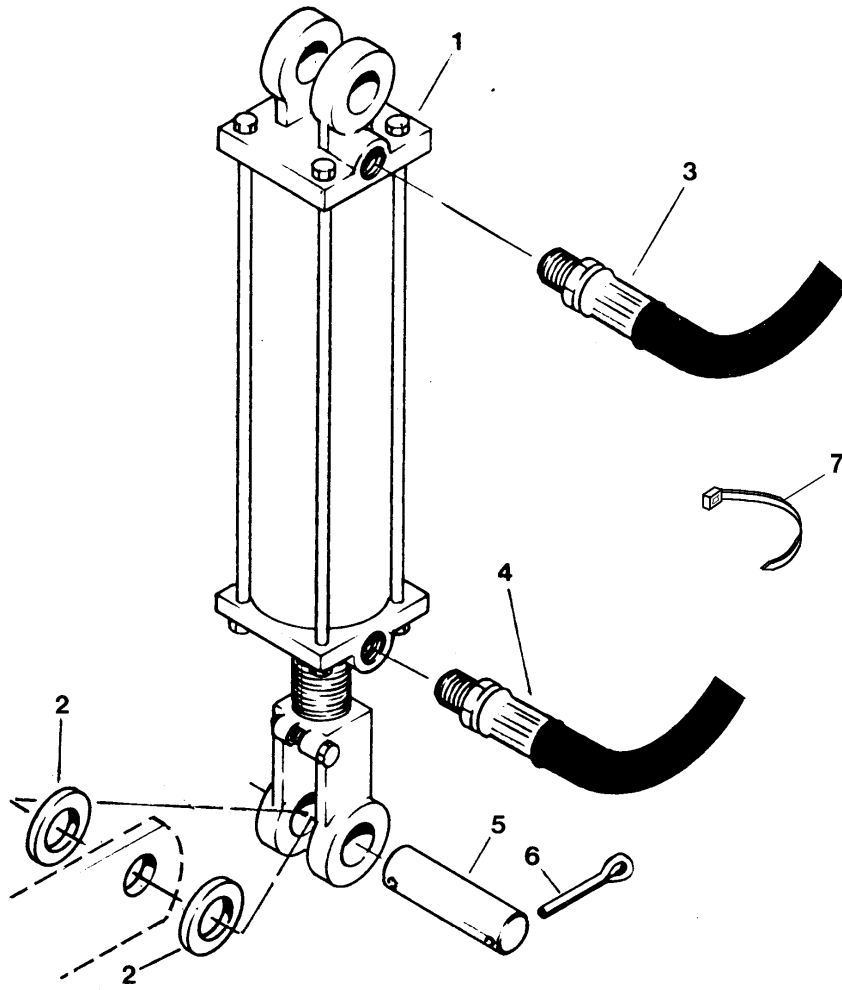
4000

4000 MOWER CONDITIONER —4

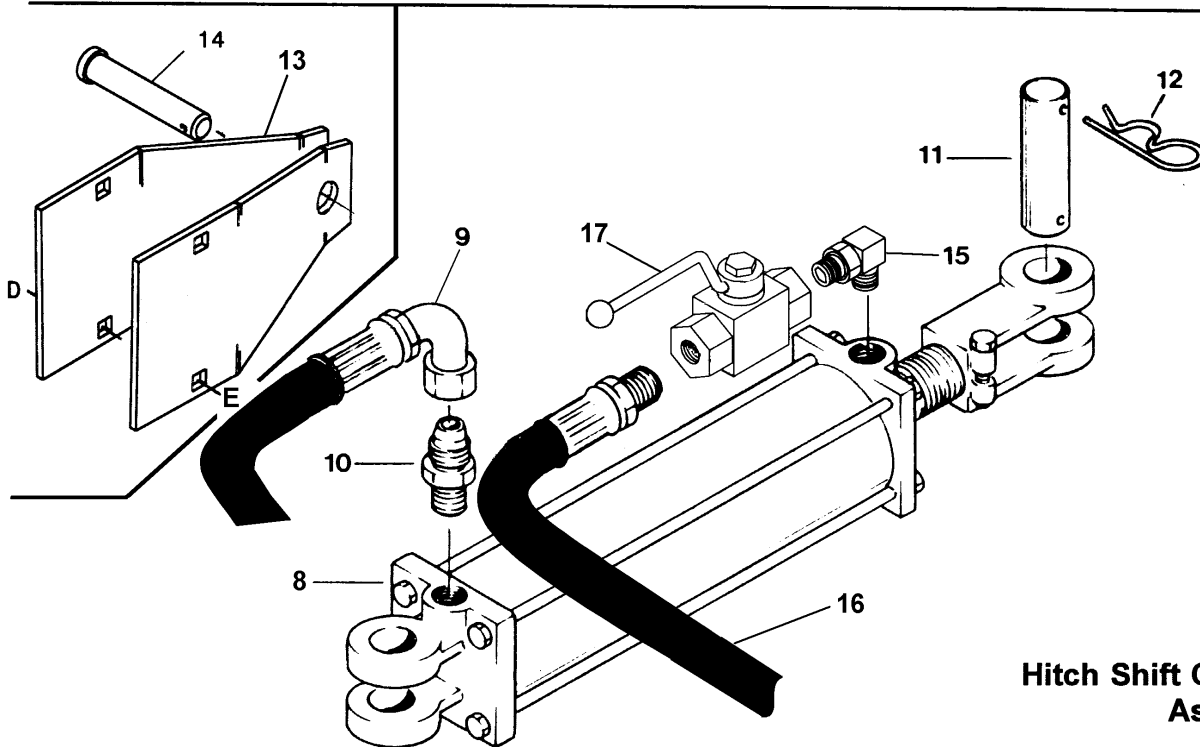
PROUCT IDENTIFICATION DECALS

REF	PART NUMBER	DESCRIPTION	QTY	SERIAL NUMBER
1	45403	DECAL – MacDon		-124499
	102582	DECAL – MacDon, 82 mm high (hitch)	1	124500-
	102524	DECAL – MacDon, 122 mm high (rear & R/H side)	2	124500-
2	25880	DECAL - rainbow, rear deflector		-124499
	25881	DECAL - rainbow, left side deflector, front		-124499
	25886	DECAL - rainbow, left side deflector, rear		-124499
	25888	DECAL - rainbow, right side deflector		-124499
	25883	DECAL - rainbow, hitch		-124499
	25872	DECAL - rainbow, header frame, right side.....		-124499
	115037	DECAL - rainbow, rear deflector	1	124500-
	102518	DECAL - rainbow, left side deflector	1	124500-
	102516	DECAL - rainbow, right side deflector	1	124500-
	102526	DECAL - rainbow, hitch	1	124500-
	115086	DECAL – rainbow, main frame, left side (extension of hitch decal)	1	124500-
	115036	DECAL - rainbow, header frame, right side.....	1	124500-
3	45416	DECAL – 4000.....		-124499
4	102522	DECAL – 4000 MOWER CONDITIONER.....		124500-

HYDRAULICS



Lift Cylinder Assembly

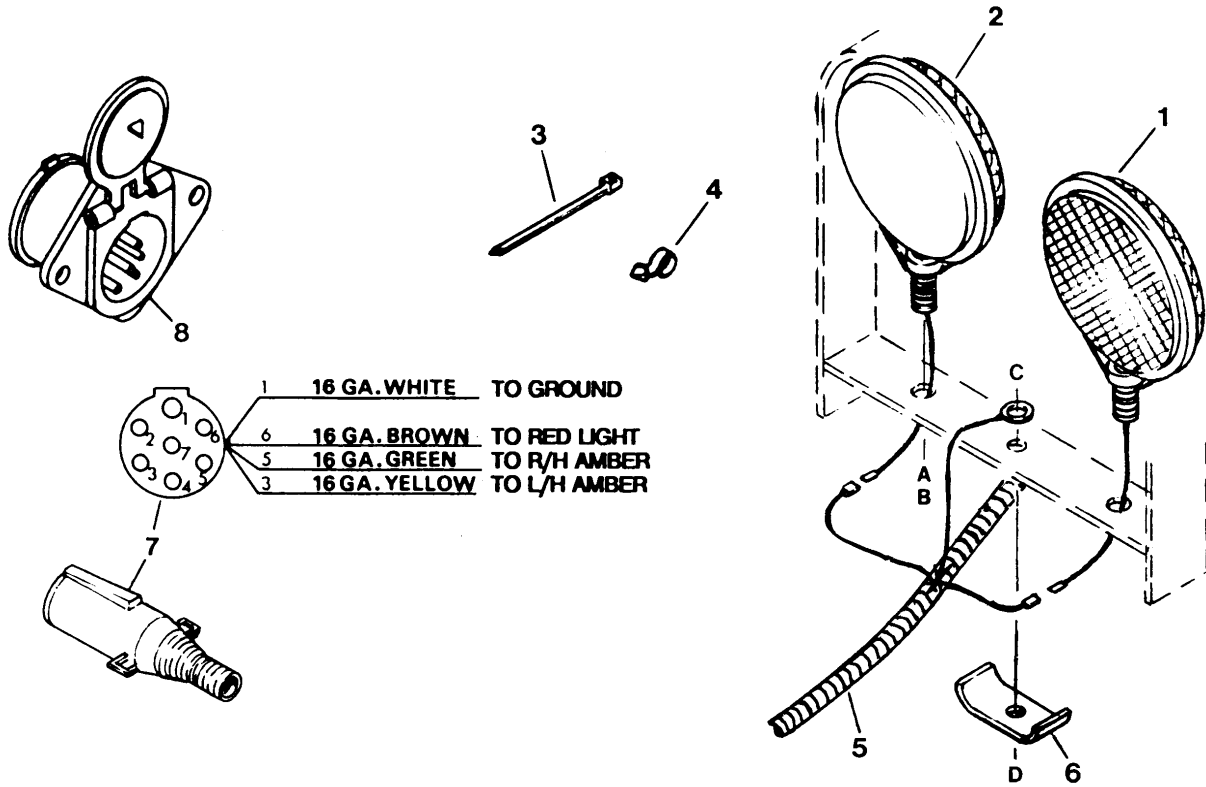


Hitch Shift Cylinder Assembly

HYDRAULICS

REF	PART NUMBER	DESCRIPTION	QTY	SERIAL NUMBER
1	36372	CYLINDER - hydraulic.....	1	
	50164	SEAL KIT - for hydraulic cylinder		
2	13756	WASHER - flat	2	
3	36370	HOSE - hydraulic, barrel end.....	1	-76500
	36375	HOSE - hydraulic, barrel end.....	1	76501-
4	36375	HOSE - hydraulic, rod end.....	1	-76500
	36561	HOSE - hydraulic, rod end.....	1	76501-
5	31492	PIN - cylinder	2	
6	18609	PIN - cotter, 1/4 x 2 inch.....	4	
7	21763	FASTENER – nylon tie, 7 ½ inch	3	
	30753	FASTENER – nylon tie, 14 ¾ inch	2	
8	36372	CYLINDER - hydraulic.....	1	
	50164	SEAL KIT - for hydraulic cylinder		
9	26842	HOSE - hydraulic.....	2	-76500
	36560	HOSE – hydraulic (qty. 2 for Serial No. 76501 – 124499).....	1	76501-
10	21848	CONNECTOR - male 1/2 tube x 1/2 NPT (qty. 2 for S.N. up to124499).....	1	
11	31492	PIN - cylinder	2	
12	13125	PIN - hair	5	
13	100071	STOP - cylinder	2	-124499
14	19958	PIN - clevis, 5/8 dia. x 3.23 inch effective length.....	1	-124499
15	115098	FITTING - 90° elbow, 9/16 O-ring x ½ NPT	1	124500-
	50219	O-RING – for 9/16 fitting		
16	115099	HOSE – hydraulic.....	1	124500-
17	108100	VALVE – ball, shut-off	1	124500-
D	30475	BOLT - round head, square neck, 3/8 NC x 4 1/2 inch		-124499
E	30228	NUT - lock, smooth flange, 3/8 NC distorted thread		-124499

LIGHT GROUP
(Serial No. 76501 and up)



REF	PART NUMBER	DESCRIPTION	QTY	SERIAL NUMBER
1	16539	LIGHT - amber	2	
2	21402	LIGHT - red	1	
3	16661	FASTENER - nylon tie, 5 1/2 inch	3	
	21763	FASTENER - nylon tie, 7 1/2 inch	1	
4	30542	CLIP - nylon.....	4	
5	36730	HARNESS - wiring, includes item 7	1	
6	32225	HOLDER - hose / harness.....	1	
7	30710	PLUG - 7 pole.....	1	
8	30461	RECEPTACLE - 7 pole	1	
A	18638	WASHER - lock, 1/2 inch		
B	6771	NUT - hex, 1/2 NF		
C	21561	BOLT - hex head, 3/8 NC x 1 1/2 inch		
D	18669	NUT - lock, 3/8 NC distorted thread		

NUMERICAL LIST

PART NO.	PAGE	PART NO.	PAGE	PART NO.	PAGE	PART NO.	PAGE
1166	23	21289	3	26321	19	30796	33
1166	33	21376	33	26842	39	30797	33
1246	5	21395	7	27160	5	30798	33
4761	27	21402	40	28013	19	30814	23
5440	23	21404	5	28014	19	30815	23
5512	7	21417	23	28346	15	30834	33
6636	17	21420	23	28403	35	30837	33
7258	19	21421	23	28790	15	30907	17
7900	7	21424	23	28815	19	30931	15
7900	33	21425	23	29028	5	31492	39
7909	7	21425	33	29467	5	31492	39
7910	7	21512	23	29598	5	32005	35
7920	7	21513	23	30031	25	32008	35
11814	7	21514	23	30269	23	32009	35
13125	3	21516	23	30316	35	32225	40
13125	5	21517	23	30445	7	32738	35
13125	7	21519	23	30446	7	32802	29
13125	13	21593	31	30461	40	32804	29
13125	39	21686	7	30519	15	32805	29
13626	9	21687	7	30520	33	32879	35
13756	39	21712	23	30525	5	32880	35
15325	15	21717	23	30542	40	33834	19
15637	15	21719	7	30574	25	34351	15
16539	40	21763	39	30576	25	34359	21
16661	40	21763	40	30602	15	34389	19
17194	17	21791	33	30603	15	34390	19
18440	15	21848	39	30607	19	34391	19
18598	11	21887	19	30622	17	34583	15
18601	7	21887	31	30622	27	34625	3
18609	39	21934	17	30668	19	34752	15
18632	11	21936	15	30669	19	34813	15
18637	31	21940	15	30696	19	34974	21
18638	29	23163	35	30710	40	34975	21
18638	31	23164	35	30753	39	34980	21
18648	7	23165	35	30757	17	36000	19
18648	19	23917	35	30767	33	36001	27
18648	29	23950	35	30768	33	36002	27
18648	33	23951	35	30769	33	36006	25
18669	31	23955	35	30772	33	36007	25
18671	7	23957	35	30773	33	36008	29
18671	25	25579	5	30774	33	36008	33
18689	23	25872	37	30775	33	36009	25
18770	29	25880	37	30776	33	36010	25
19183	15	25881	37	30777	33	36011	25
19739	11	25883	37	30778	33	36012	19
19927	7	25886	37	30779	33	36013	17
19958	39	25888	37	30780	33	36015	19
20535	15	25929	35	30781	33	36019	5
21024	23	25990	35	30782	33	36021	25
21024	33	25991	35	30785	33	36022	25
21032	35	26318	23	30788	33	36025	25
21055	35	26319	23	30790	33	36026	9
21151	23	26320	23	30793	33	36103	3

NUMERICAL LIST

PART NO.	PAGE	PART NO.	PAGE	PART NO.	PAGE	PART NO.	PAGE
36105	29	36298	7	36642	29	45403	37
36108	29	36310	35	36643	29	45416	37
36110	3	36325	7	36645	29	47070	25
36116	27	36328	7	36649	29	47295	15
36118	27	36329	7	36650	29	47300	15
36121	25	36332	7	36651	35	47324	21
36124	25	36335	7	36652	31	47681	15
36132	3	36336	9	36653	29	47988	23
36133	3	36344	11	36654	29	50164	39
36140	27	36350	15	36658	29	50164	39
36142	3	36368	15	36658	31	50179	23
36150	5	36370	39	36659	31	50219	39
36176	5	36372	39	36660	31	100071	39
36180	5	36372	39	36661	31	102516	37
36196	5	36374	15	36662	31	102518	37
36200	5	36375	39	36663	31	102522	37
36204	29	36375	39	36664	31	102524	37
36207	5	36377	15	36665	31	102526	37
36208	29	36378	15	36666	31	102582	37
36209	29	36388	9	36667	31	104090	13
36210	29	36392	15	36668	27	108100	39
36211	5	36405	15	36669	27	113222	19
36212	5	36410	15	36670	27	115036	37
36213	5	36417	25	36671	27	115037	37
36214	5	36420	17	36672	17	115082	19
36217	29	36423	17	36673	17	115086	37
36220	27	36430	17	36674	17	115098	39
36223	17	36432	11	36675	17	115099	39
36224	17	36433	11	36676	31	115120	15
36229	27	36444	11	36677	29	115121	19
36230	29	36450	11	36677	31	115145	35
36231	29	36457	11	36678	31	115147	35
36236	27	36458	11	36679	29	115752	29
36238	29	36470	25	36685	29	118475	19
36239	29	36471	25	36686	29	135148	35
36240	17	36495	25	36687	27	140135	3
36244	17	36496	25	36688	27	141170	29
36250	17	36517	3	36695	25	141171	29
36251	5	36560	39	36696	25	141172	29
36252	17	36561	39	36713	25	141173	29
36256	27	36586	13	36714	25	141175	7
36256	29	36590	13	36723	3	B 2028	15
36256	33	36596	13	36730	40	B 2068	5
36257	27	36600	5	36755	13	B 2514	21
36260	25	36601	13	36809	13		
36261	25	36610	3	36920	9		
36278	11	36616	3	36931	19		
36280	9	36622	9	36936	19		
36280	25	36625	13	37930	19		
36284	9	36627	13	42592	17		
36284	25	36628	9	43981	23		
36285	25	36636	9	44611	35		
36292	11	36641	29	44944	35		

**Model 4000 Mower Conditioner
SUGGESTED STOCKING LIST**

P.C. REF	PART NUMBER	DESCRIPTION	SUGGESTED QTY.		ORDER QTY	UNIT PRICE	EXT. PRICE
			2 UNITS	5 UNITS			
<u>SKID SHOES - Parts Catalog Pg 13</u>							
4	36627	SUPPORT - front	1	4			
<u>REEL - Parts Catalog Pg 15</u>							
2	21936	BEARING - with collar	1	2			
8	30519	BEARING - less collar	0	2			
15	21940	BEARING - cam follower	1	5			
16	28346	BOLT - special, cam follower	1	2			
17	28790	BUSHING - plastic, reel arm	5	10			
18	47681	FINGER - pick-up, double	10	50			
19	19183	HOLDER - finger	5	20			
25	47295	DISC - reel bushing	1	4			
<u>REEL DRIVE - Parts Catalog Pg 17</u>							
10	36013	BELT - reel drive	1	2			
13	30622	CROSS and BEARING KIT	1	1			
<u>SICKLE AND DRIVE - Parts Catalog Pg 19</u>							
3	36012	BELT - sickle drive	1	3			
4	33834	ARM - drive	1	2			
8	115082	PIN - sickle head	1	1			
9	115121	HEAD - sickle	1	2			
10	113222	SEAL - sickle head	1	3			
11	30607	BEARING - needle	1	3			
12	34389	PLUG - sickle head	1	1			
13	30668	SCREW - # 12 NC x 1 inch	15	60			
	30696	SCREW - #12 NC x 5/8 inch	50	200			
14	30669	NUT - lock, # 12 NC	50	200			
15	36931	SICKLE ASSEMBLY - less head	1	3			
16	34390	SECTION - sickle	25	200			
17	34391	SECTION - end	2	8			
19	28014	GUARD - sickle, left end	2	8			
	28013	GUARD - sickle	10	100			
20	28815	CLIP - hold down	2	20			
<u>SICKLE DRIVE ASSEMBLY - Parts Catalog Pg 23</u>							
1	26320	DRIVE - sickle, complete	0	1			
5	30814	SEAL - oil	1	1			
6	21420	BEARING - needle	1	2			
8	21512	BEARING - cone	1	2			
14	30815	SEAL - oil	1	1			
15	21513	BEARING - needle	1	2			
17	21514	O-RING	1	2			
20	21516	BEARING - needle	1	2			
21	21517	SEAL - oil	1	1			
24	47988	YOKE/HOUSING ASSEMBLY	0	1			
28	21519	BEARING - cup	1	2			

**Model 4000 Mower Conditioner
SUGGESTED STOCKING LIST**

P.C. REF	PART NUMBER	DESCRIPTION	SUGGESTED QTY.		ORDER QTY	UNIT PRICE	EXT. PRICE
			2 UNITS	5 UNITS			
<u>ROLLS & FLOAT ARMS - Parts Catalog Pg 25</u>							
9	30031	BEARING - with collar	0	2			
16	47070	FLANGE - bearing, with fitting	1	2			
17	30576	FLANGE - bearing	1	2			
<u>DRIVES GROUP - Parts Catalog Pg 27</u>							
6	36220	DRIVELINE - roll	0	1			
<u>PAINT - Parts Catalog Pg 35</u>							
	25991	PAINT - black, 1 litre	1	1			
	23957	PAINT - white, 1 litre	1	1			
	32880	PAINT - red, 1 litre	1	1			
<u>HYDRAULICS - Parts Catalog Pg 39</u>							
1	50164	SEAL KIT - hydraulic cylinder	1	1			