

MacDon® *The Harvesting Specialists.*



Performance Options

D2 Series Windrower Draper Headers



D2 Series Windrower Draper Headers



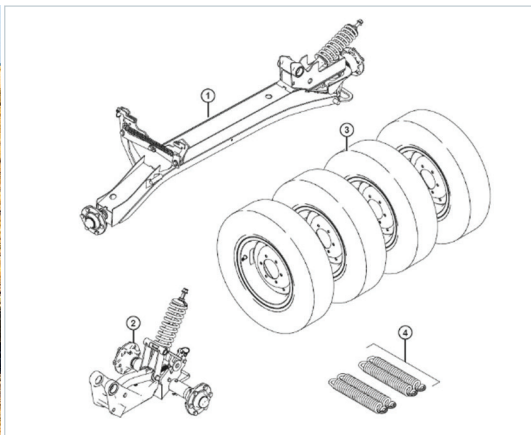
More Capacity, Durability, and Speed.

MacDon D2 Series Windrower Draper Headers feature super-sized capacity thanks to the ultra-deep 50-inch (127 cm) deep draper deck. MacDon’s all-new super-structured five-sided back tube frame design supports this tremendous capacity. And at the front, loading those massive drapers up is MacDon’s ClearCut™ High-Speed Cutting System. ***Capacity, durability, and speed that’s how MacDon D2 Series Headers get you more.***



TABLE OF CONTENTS

EasyMove™ Slow Speed Transport	4
Stabilizer Wheels	5
Full Length Upper Cross Auger	6
Vertiblade™ Vertical Knives	7
Rock Retarder Kit	8
High Wear Skid Shoes	9
Crop Divider Storage Bracket	10
Stubble Light Kit	11
Tine Tube / Reel Conversion Kits	12
Swath Forming Rods (center delivery)	13
Rice Divider Rods	14
Lodged Crop Reel Fingers	15
Crop Lifter Kit and Storage Rack	16
HC20 Hay Conditioner	17
Swath End Delivery Kits	18



WHAT IT IS/DOES

MacDon's EasyMove™ Transport System makes it easier than ever to move your D2 Series Draper from field to field.

This Performance Option is entirely self-contained on the header and allows towing behind your windrower at speeds up to 32 km/h (20 mph).

Headers equipped with this option also have the advantage of using the spring-loaded stabilizer wheels to help steady the header when cutting off the ground in bumpy field conditions creating an even stubble height.

FEATURES/BENEFITS

- » Transports D2 headers safely from field to field
- » Prevents the header from bouncing or rocking side to side
- » Allows for an even cutting height when cutting off the ground
- » Locks into a rigid position completely off the ground when they are not in use

Notes:

Always follow local traffic laws and regulations.

IDEAL CROP CONDITIONS

Crop conditions where cutting off the ground is necessary.

IDEAL FIELD CONDITIONS

Bumpy field condition.

SPECIFICS

Compatible With:

D2

Collector Bundle #:

C2173 - D230/35/40/41

Collector contains: base kit, wheels, and tow pole.

Weight:

C2173 – 379 kg (836 lbs) contains:

1 x B6288 – 230 kg (506 lbs)

2 x B7398 – 94 kg (207 lbs)

1 x B7392 – 55 kg (121 lbs)

Dealer Set-Up Time:

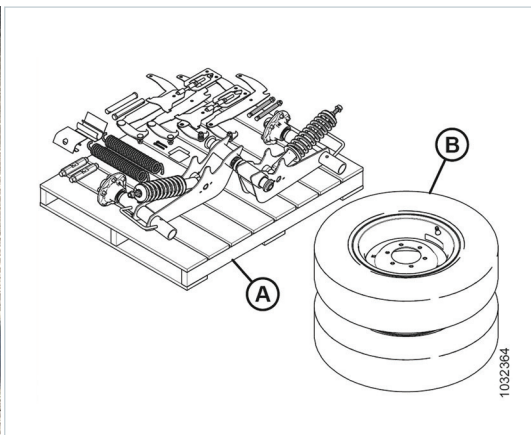
6 hrs – 2 People required

Instruction #:

214571

Stabilizer Wheels

MacDon



WHAT IT IS/DOES

Spring-loaded stabilizer wheels help to steady the header when cutting off the ground in bumpy field conditions creating an even stubble height.

FEATURES/BENEFITS

- » Prevents the header from bouncing or rocking side to side
- » Allows for an even cutting height when cutting off the ground
- » Locks into a rigid position completely off the ground when they are not in use

IDEAL CROP CONDITIONS

Crop conditions where cutting off the ground is necessary.

IDEAL FIELD CONDITIONS

Bumpy field condition.

SPECIFICS

Compatible With:

D230, D235, D241

Bundle #:

C2171 – Includes B6460 (Supports & Hubs), and B7398 (Wheels & Tires)

Weight:

C2171 – 159 kg (350 lbs) contains:
1 x B6460 – 109 kg (240 lbs);
1 x B7398 – 47 kg (103 lbs)

Dealer Set-up Time:

2 hrs

Instruction #:

214954

Full Length Upper Cross Auger

MacDon



WHAT IT DOES

The upper cross auger attaches in front of the backtube and improves crop feeding into the center of the header in heavy crop conditions. It is ideal for high-volume harvesting of forages, peas, canola, mustard and other tall, bushy, hard to feed crops. It prevents crop from balling up on the drapers and flowing over the backtube.

FEATURES/BENEFITS

- » Moves heavy, bushy, high-volume crops to the center of the header for smooth feeding
- » Variable pitch flighting at the center of the auger aggressively drives crop into the combine
- » Features a shut-off valve to disengage the drive when the auger is not required
- » Upper Cross Auger speed is relative to side draper speed
- » True full length auger

IDEAL CROP CONDITIONS

High volume and bushy crop conditions.

IDEAL FIELD CONDITIONS

Any field condition.

SPECIFICS

Compatible With:

D2

Instruction #:

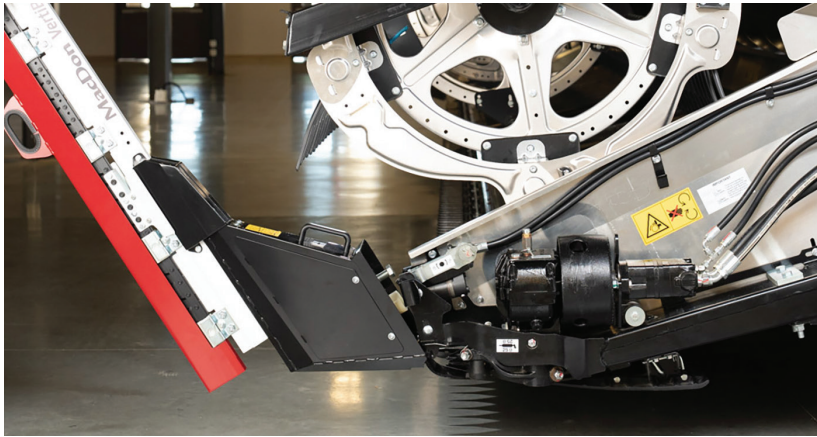
214973 (Completion Kit), 215294 (Hydraulic Plumbing)

Description	Bundle #	Completion Time (hrs)	Weight (lbs)	Weight (kg)
15' One Piece	B7290	3	153	69
20' One Piece	B7291	3	180	82
25' Two Piece	B6413	3.5	281	127
30' Two Piece	B6414	3.5	312	142
35' Two Piece	B6415	3.5	343	156
41' Two Piece	B6416	3.5	360	163
15' Hydraulic Lines*	B7270	1	31	14
20' Hydraulic Lines*	B7271	1	34	15
25' Hydraulic Lines*	B7338	1	38	17

**Hydraulic line kits needed for headers WITHOUT factory installed plumbing*

VertiBlade™ Vertical Knives

MacDon



WHAT IT DOES

Vertical knives significantly reduce seed shatter loss from dividing interferences of the standard crop dividers and allow for consistent dividing in all conditions. The vertical knife attaches to a MacDon designed mount that fits on the header ends.

FEATURES/BENEFITS

- » Quick attach and removal, hydraulically driven allows for adjustable speed
- » Motor stays mounted low on the header
- » No hydraulic hoses to connect. Hoses remain on the header.

IDEAL CROP CONDITIONS

Canola and oilseed rape, or any other bushy, tangled crop.

IDEAL FIELD CONDITIONS

Any field condition.

SPECIFICS

Compatible With:

D2

Bundle#

B7029

Set-up Time:

3 hrs

Weight:

156 kg (344 lbs)

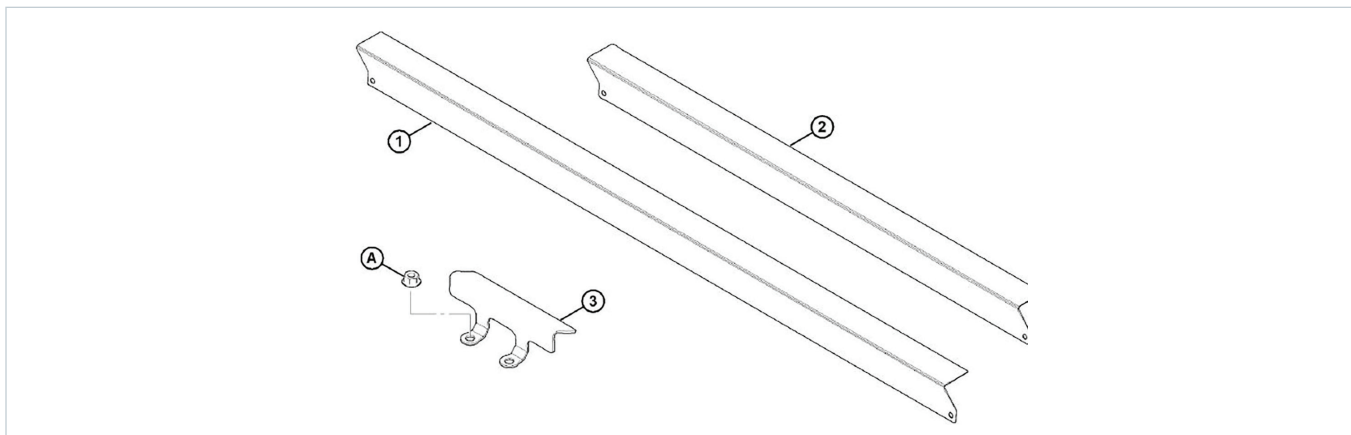
Instruction #:

215293 (Hydraulics), 215042 (Completion)

Description	Bundle #	Setup Time (hrs)	Weight (lbs)	Weight (kg)
15' Hydraulic Lines	B7274	3	38	17
20' Hydraulic Lines	B7275	3	41	19
25' Hydraulic Lines	B7339	3	43	20
30' Hydraulic Lines	B7127	3	46	21
35' Hydraulic Lines	B7128	3	48	22
41' Hydraulic Lines	B7130	3	57	26

Rock Retarder Kit

MacDon



WHAT IT DOES

The rock retarder kit is ideal for situations where cutting low is necessary in rocky field conditions. In these rocky conditions, this kit will help prevent rock ingestion by preventing most stones up to the size of a baseball from getting onto the drapers.

FEATURES/BENEFITS

- » Allows ground level cutting in rocky field conditions
- » Prevents most smaller rocks from getting onto the drapers and into the combine
- » Compatible with both Pointed and PlugFree™ Guards

IDEAL CROP CONDITIONS

Most crop conditions.

IDEAL FIELD CONDITIONS

Rocky field conditions.

Notes:

This kit may impede crop flow in short crops.

SPECIFICS

Compatible With:

D225, D230, D235, D241

Bundle #:

B7122

Weight:

20 kg (43 lbs)

Dealer Set-up Time:

1 hour

Instruction #:

215280

High Wear Skid Shoes

MacDon



WHAT IT DOES

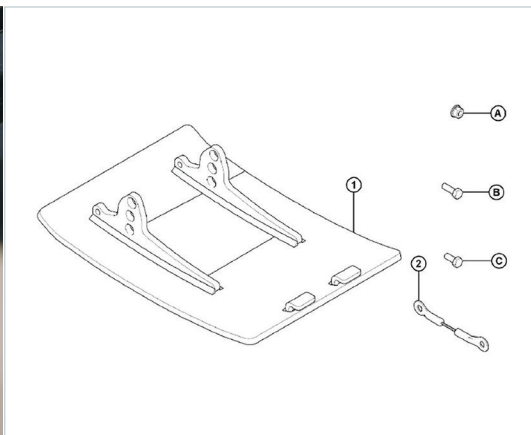
The High Wear Skid Shoes kit provides extended wear skid shoes for use in rocky, abrasive conditions.

FEATURES/BENEFITS

» Quick attach. Intended to replace existing polyethylene skid shoes

Notes:

This kit is not recommended for use in wet mud or in conditions vulnerable to sparking (flint rock).



IDEAL CROP CONDITIONS

Normal dry conditions.

IDEAL FIELD CONDITIONS

Rocky, abrasive soil conditions.

SPECIFICS

Compatible With:

D2

Bundle #:

B6801

Weight:

31 kg (68 lbs)

Dealer Set-up Time:

30 min

Instruction #:

214977

Crop Divider Storage Bracket

MacDon



WHAT IT DOES

Divider storage brackets attach to the back of the header. They allow for quick removal and storage of the divider cones and, if required, reduce the transport width of the header.

FEATURES/BENEFITS

- » Allow for quick disconnect of divider cones
- » Divider cones store on the header

IDEAL CROP CONDITIONS

Any crop condition.

IDEAL FIELD CONDITIONS

Any field condition.

SPECIFICS

Compatible With:

D2

Bundle #:

B7030

Weight:

4.5 kg (10 lbs)

Dealer Set-up Time:

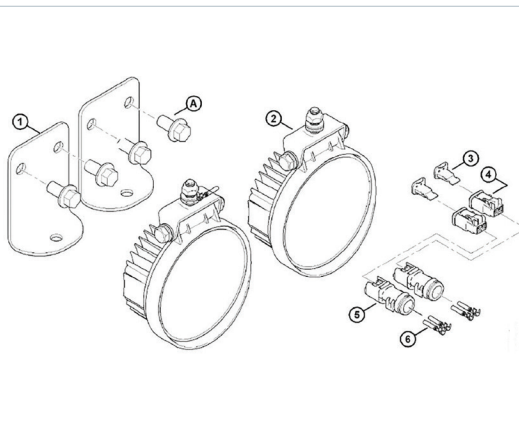
30 min

Instruction #:

215229

Stubble Light Kit

MacDon



WHAT IT DOES

The Stubble Light kit consists of two rugged LED lights and brackets. For lighting behind the header outboard of the header legs.

FEATURES/BENEFITS

- » Better visibility in low light conditions
- » Low current draw, under 2 amps each
- » 2025 lumens each

IDEAL CROP CONDITIONS

Any crop condition.

IDEAL FIELD CONDITIONS

Any field condition.

SPECIFICS

Compatible With:

D225, D230, D235, D241

Bundle #:

B7575

Weight:

2 kg (5 lbs)

Dealer Set-up Time:

15 min

Instruction #:

215045

Tine Tube / Reel Conversion Kits



WHAT IT DOES

Tine Tube / Reel Conversion kits convert a standard 5 bat (tine tube) reel into a 6 or 9 bat reel.

The additional tine tubes and reel tines allow for a slower reel speed with less load on each individual tine tube; gently lifting delicate or lodged crop.

FEATURES/BENEFITS

» Improves feeding performance in severely lodged or delicate crops.

IDEAL CROP CONDITIONS

Stringy or delicate crops.

IDEAL FIELD CONDITIONS

Any field condition.

SPECIFICS

Compatible With:

D2

Description	Bundle #	USUP (hrs)	Weight (lbs)	Weight (kg)
20' SR 6-9 Bat Plastic Fingers	B7360	8	148	67
25' SR 6-9 Bat Plastic Fingers	B7361	9	180	82
30' DR 6-9 Bat Plastic Fingers	B7362	12	240	109
41' DR 5-6 Bat Plastic Fingers	B7359	12	121	55

Swath Forming Rods (center delivery)

MacDon

WHAT IT DOES

Swath forming rods form windrows with the crop heads pointing into the center of the windrow.

This kit is mainly used for grass seed cutting applications.

FEATURES/BENEFITS

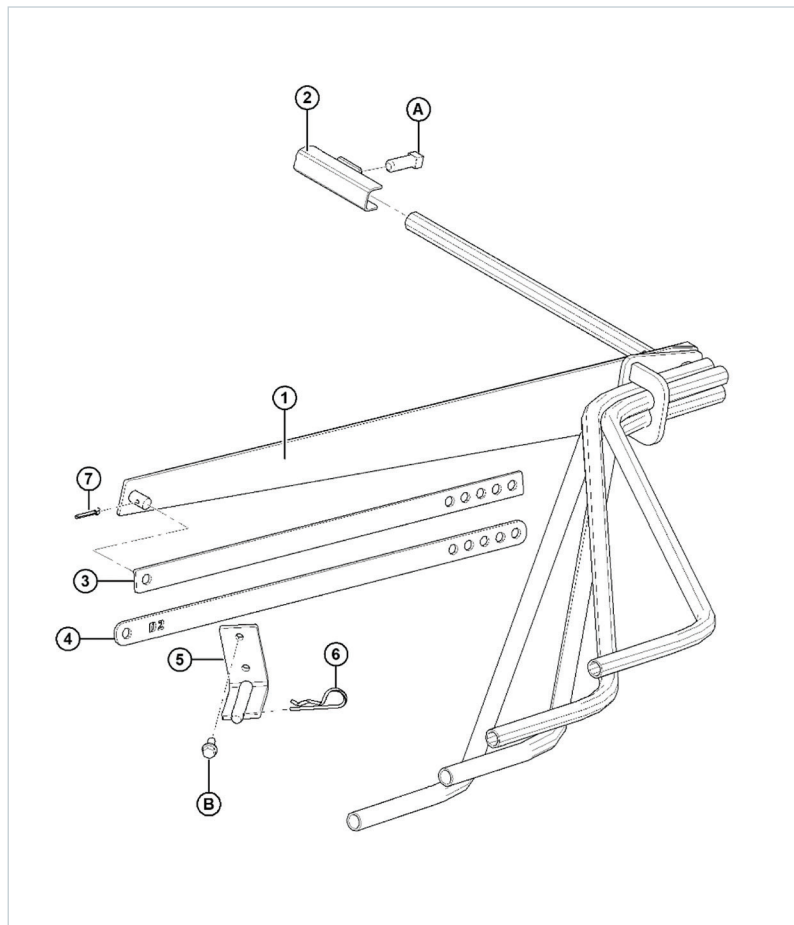
» Helps protect against shattering.

IDEAL CROP CONDITIONS

Grass Seed

IDEAL FIELD CONDITIONS

Any field conditions.



SPECIFICS

Compatible With:

D2

Bundle #:

B7383

Weight:

45 kg (100 lbs)

Dealer Set-up Time:

1 hour

Instruction #:

215936



WHAT IT DOES

Rice Divider Rods help divide slightly lodged or leaning crop. This kit is mainly used in rice cutting applications.

FEATURES/BENEFITS

- » Helps separate leaning crop at the divider point of the header for a cleaner cut between the header and standing crop.
- » Prevents the divider from going over top of the leaning crop.

IDEAL CROP CONDITIONS

Rice

IDEAL FIELD CONDITIONS

Leaning crop.

SPECIFICS

Compatible With:

D2

Bundle #:

B7238

Weight:

11 kg (25 lbs)

Dealer Set-up Time:

1 hour

Lodged Crop Reel Fingers

MacDon

WHAT IT DOES

This kit is intended to help the reel grab or bring in lodged or downed crop on the ends of the header.

FEATURES/BENEFITS

» Aids in picking up severely lodged crop near the dividers to help divide and cut the crop.

IDEAL CROP CONDITIONS

Severely lodged or downed, heavy crop such as rice.

IDEAL FIELD CONDITIONS

Any field conditions.

IMPORTANT:

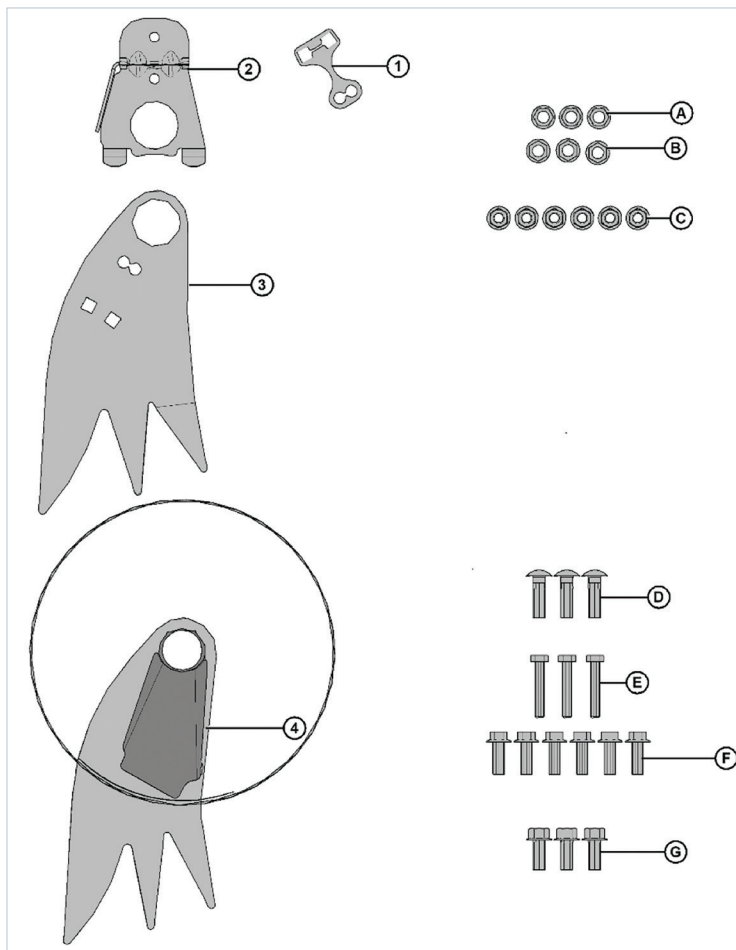
When operating a header with the reel lowered and in the aft position, Lodged Crop Fingers could contact the draper deflectors.

The Lodged Crop Fingers kit should not be installed on a header with an upper cross auger when the reel is in the canola position as the lodged crop fingers will contact the auger when the reel is fully aft.

Lodged Crop Fingers DO NOT clear diagonal braces on single reel headers in the aft position on D2 headers.

Lodged Crop Fingers risk damaging the upper cross auger when the reel is fully retracted AND in the aft position.

Lodged Crop Fingers are not compatible with Swath End Delivery Kits



SPECIFICS

Compatible With:

D2

Bundle #:

B7230

Weight:

10.8 kg (24 lbs)

Dealer Set-up Time:

1 hour

Instruction #:

215406

Crop Lifter Kit and Storage Rack

MacDon



WHAT IT DOES

The crop lifters attach to the cutterbar and are designed to lift downed and lodged crops. For use when the crop is flat to the ground, and some extra lifting action is required, or a taller stubble height is needed.

The crop lifter rack comes as a set of two and mounts to the backtube of the header allowing for convenient storage of the crop lifters when they are not in use.

FEATURES/BENEFITS

- » Aids the header in lifting downed and lodged crops
- » Attaches and detaches quickly and conveniently stores on-board with the crop lifter rack

Notes:

Crop Lifter Storage Rack may interfere with other options depending on how the header is configured. For example some configurations that might not work; EasyMove Slow Speed Transport combine extension hitch storage location, crop divider storage bracket, stabilizer/gauge wheel.

IDEAL CROP CONDITIONS

Lodged cereal crops.

IDEAL FIELD CONDITIONS

Any field condition.

PARTS

Header Model	Number of Kits (B7022) Required
D215 and D220	x2
D215 and D220	x3
D230	x3
D235 and D241	x4

SPECIFICS

Compatible With:

D2

Bundle #:

B7022	Crop Lifters
B7023	Storage Rack

Weight:

12 kg (26 lbs)

Dealer Set-up Time:

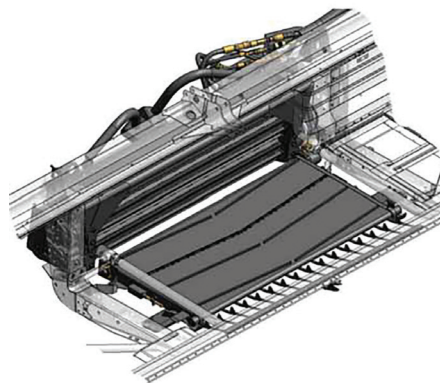
30 min	Crop Lifters
30 min	Storage Rack

Instruction #:

214975	Crop Lifters
214974	Storage Rack

HC20 Hay Conditioner

MacDon



WHAT IT IS/DOES

The HC20 provides opportunity for customers to condition crop at wider widths (up to 35 ft) on D2 draper headers in a single pass.

FEATURES/BENEFITS

- » Condition crops with your draper header
- » Up to 35 ft single pass conditioning
- » Fully compatible with D2 to install and condition or remove and swath

IDEAL CROP CONDITIONS

Lighter hay.

IDEAL FIELD CONDITIONS

Any field condition.

SPECIFICS

Compatible With:

M2 Series windrower paired with a D215, D220, D225, D230, and D235 (with timed double knife drive)

Collector Bundle #:

C2251

Contains:

- | | |
|-------|---|
| B7477 | HC20 Base Conditioner with hydraulic completion package |
| B7478 | HC20 Feed Deck, Rock Grate, and Mounting Brackets |
| B7479 | HC20 Forming shields |
| B7519 | HC20 Information Package |

Weight:

C2251 – 1400 lbs / 635 kg

Dealer Set-Up Time:

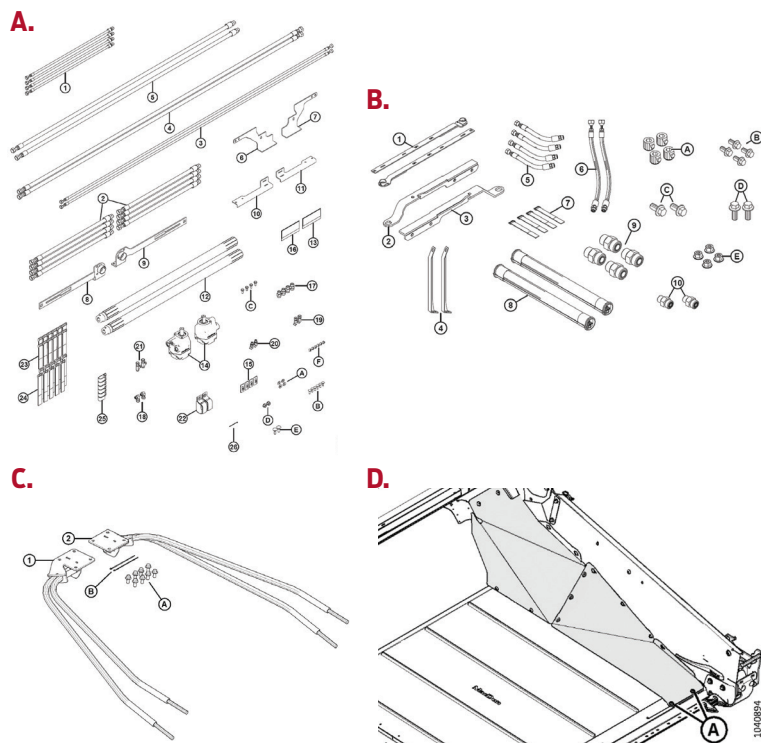
3 hrs

Instruction #:

262400

Swath End Delivery Kits

MacDon



HEAVY FORAGE KITS

A. B7268

Double Draper Drive Kit is recommended if using swath end delivery in heavy forage, such as when laying two windrows that can be picked up in a single pass of a forage harvester.

B. B7267

Draper Extension Kit extends draper length to narrow swath opening up to 20" (500mm) and is typically required with the B7268.

CROP FLOW KITS

C. B6447 (Left) / B6448 (Right)

Swath Deflector Rods help prevent delivered crop at the opening from falling beyond the end of the header and interfering with the standing crop. These are recommended to be paired with the B7634 for headers that are used primarily for end delivery.

D. B7634

Wide End Deflectors are used to push cut crop over to clear the header skid shoe when end delivering. It leaves more room between the windrow and the standing crop, so there is room for the divider on the return pass.

WHAT IT IS/DOES

Hydraulic deck shift allows the draper opening to be moved from the centre of the header to either the right or left end of the header, so that two windrows can be laid beside each other.

FEATURES/BENEFITS

- » Ensure maximum performance when using swath end delivery
- » Keep cut crop from interfering with the standing crop
- » Helps crop flow smoothly from the header into a windrow

IDEAL CROP CONDITIONS

Double Draper Drive Kit and Draper Extension Kit is recommended for heavy forage crops

IDEAL FIELD CONDITIONS

Whenever swath end delivery is desired

SPECIFICS

Compatible With:

D225, D230, and D235 with hydraulic deck shift

Collector Bundle #:

B7268	Double Draper Drive Kit
B7267	Draper Extension Kit
B6447 (Left) B6448 (Right)	Swath Deflector Rods
B7634	Wide End Deflectors

Weight:

B7268	Double Draper Drive Kit: 180 lbs / 80 kg
B7267	Draper Extension Kit: 44 lbs / 20 kg
B6447 (Left) B6448 (Right)	Swath Deflector Rods: 15 lbs / 6.8 kg (each)
B7634	Wide End Deflectors: 9 lbs / 4.1 kg

Dealer Set-Up Time:

B7268	Double Draper Drive Kit: 4 hrs
B7267	Draper Extension Kit: 2 hrs
B6447 (Left) B6448 (Right)	Swath Deflector Rods: 1 hr (each)
B7634	Wide End Deflectors: 1 hr

Instruction #:

B7268	Double Draper Drive Kit: 262024
B7267	Draper Extension Kit: 262023
B6447 (Left) B6448 (Right)	Swath Deflector Rods: 214976
B7634	Wide End Deflectors: 215851



MacDon[®] *The Harvesting Specialists.*

MacDon.com