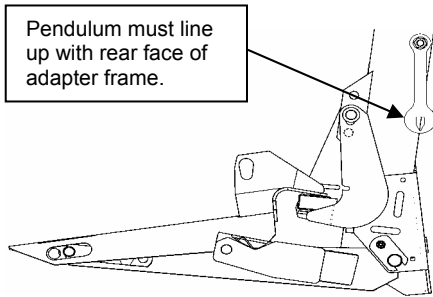


# QUICK REFERENCE CARD: CNH WIDE DECK – AFX COMBINES

## Combine Initial Settings

- Fully retract header tilt cylinder and lower header until it slightly contacts the ground. At this point adjust feeder faceplate angle to align pendulum with rear face of adapter (if applicable).



- Adjust front drum height to small grains position as per combine operators manual.
- Ensure feeder house output shaft speed is 575 rpm.
- Adjust feeder house faceplate rearward towards the cab to flattest position.

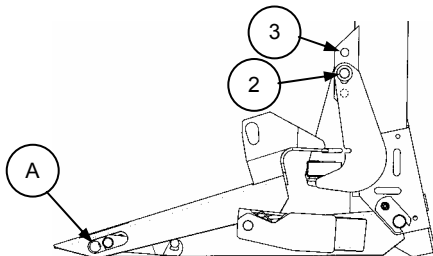


AFX FEEDER HOUSE

- Remove all feeder house dust shields, enclosure panels, etc.

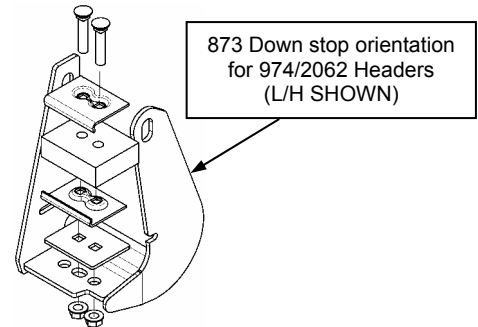
## 873 Adapter Initial Settings

- Place adapter float pin in proper hole for your header model as follows:
  - 963/2042/972/1052/973/2052/974/2062 headers in hole (A).
- Place adapter down stop pin in proper hole for your header model as follows:

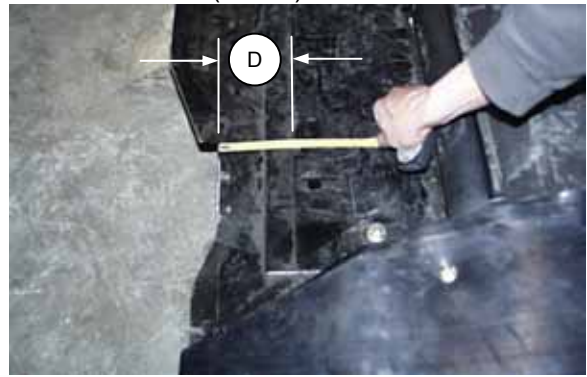


- 973/2052/974/2062 headers in hole (2), (factory set).
- 963/2042/972/1052 headers in hole (3).

- If mounting adapter to a 974/2062 header, move down stop pad to outboard set of holes (both sides) as shown. **NOTE:** If mounting to a 963/2042/972/1052/973/2052 header, orientation is correct as shipped.

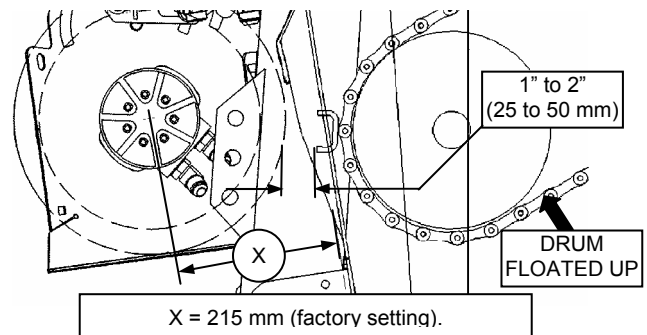


- For 972/973/974 - Install skid plate on adapter feed pan so dim. D = 3-1/2" (90 mm).



- For 963 - Slide transition plate rearward until feed pan bolts hit rear of slot.
  - Refer to 873 Operator's Manual for adjustment details.

- Adjust RTD position to achieve 1" to 2" dimension. **Note:** To achieve this feed chain on combine may need to be fully extended.

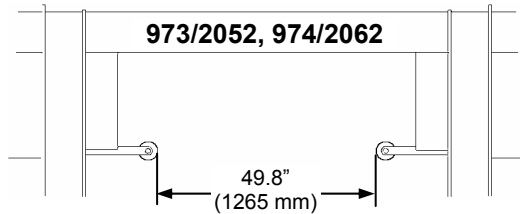


- Set the center link between the header and adapter to 19-1/4" (490 mm) length (pin to pin).
- Set the float to specs given on pages 3 & 4.
- Set the draper speed flow control so number "4" is at the 12 o'clock position

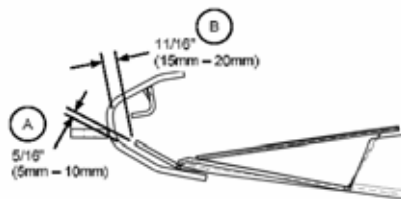
# QUICK REFERENCE CARD: CNH WIDE DECK – AFX COMBINES

## Header Initial Settings

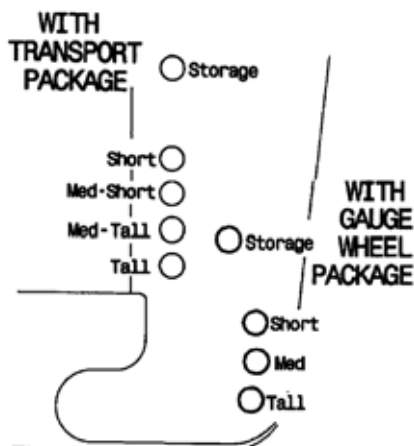
- See page 4 for 963/2042 Header.
- For 973/2052 and 974/2062 Model Headers: Set the center delivery opening to **49.8"** (1265 mm).



- Increase opening if bridging occurs in bulky crops such as Mustard, Canola or Peas.
- Position the decks so there is equal overlap of adapter feed draper each side.
- Align the vertical edge of the rear deflectors on the feed pan just inside the edge of the feeder house opening to ensure smooth crop flow.
- Re-check skid plate clearance (set during 873 initial settings) with adapter inserted in header. (see appropriate dimensions below) Refer to 873 operator's Manual for further details.



- Gauge wheels are intended to help float the header when cutting off the ground. For such applications set gauge wheels in the Short – Tall setting depending on cut height. **Note:** When cutting on the ground place gauge wheels in the storage position.

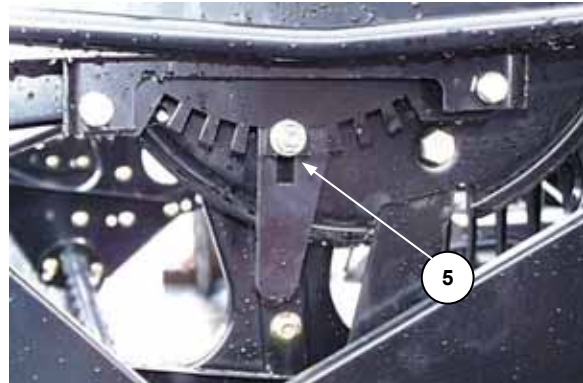


## Pickup Reel Initial Settings

- See page 4 for 963/2042 Header.
- Install bolt (C) through the cam arm with head inboard and torque to 120 ft. lbs. (162 N·m.)



- Adjust the finger pitch to position **5**.



- Set the fore/aft position to between **4** and **5** on the gauge decal at left reel support arms.



- Reel finger to sickle guard minimum clearance with reel fully lowered is **5/8"** (15mm), **measured at both ends of the cutterbar. For 974/2062 Headers, flex to full frown when checking clearance.**
- Recommended reel speed is 10% above ground speed.

# QUICK REFERENCE CARD: CNH WIDE DECK – AFX COMBINES

973/2052, 974/2062 Initial Set-up

<u>Average Cereal Crops</u>	<u>Rice</u>		<u>Soybeans</u>	
	<u>Normal Cutting</u>	<u>Tough Cutting</u>	<u>Dry Conditions</u>	<u>Wet Conditions</u>
<b>Sickle-</b> Check daily that guards are aligned. Clearance from hold down to sickle 0.020" (0.5mm)	-	-	-	-
<b>2100 reel Fore/Aft-</b> 4 or 5 on decal <b>Finger Pitch Adjustment-</b> Slot 5 <b>Reel Clearance-</b> 5/8" (15mm) To be set with the header in full frown (974/2062 only). Refer 974 Operator's Manual. <b>Speed-</b> +10 % ground speed.	5 - - -	7 - - -	6 Slot 7 ½" (13mm) -	6 Slot 7 ½" (13mm) -
<b>Draper Speed-</b> Dial position "4".  <b>Draper opening-</b> 49.8" (1265 mm)	- -	Position 3 or 4  50.6" (1285 mm)	- -	- -
<b>Guard Angle-</b> center link 19-¼" (490 mm) length (pin to pin). <b>Poly Skids-</b> None	- Yes	- Yes	- Yes	Center link fully retracted. Yes
<b>Gauge Wheels (if equipped)-</b> Most cereals require "medium" stubble height setting	Not Applicable	Not Applicable	Storage	Storage
<b>Float-</b> Adjust float to achieve 0" gap at downstop pad. (Refer to 873 Operator's Manual)	½" gap	½" gap	½" gap	½" gap

# QUICK REFERENCE CARD: CNH WIDE DECK – AFX COMBINES

963/2042 Initial Set-up, Average Cereal Crops	Field Peas		Soybeans	
	Dry Conditions	Wet Condition	Dry Conditions	Wet Condition
<b>Sickle</b> -Check daily that guards are aligned. Clearance from hold down to sickle 0.020" (0.5mm)	-	-	-	-
<b>2000B Reel Fore/ Aft</b> -5 <sup>th</sup> hole/frt. <b>Cam Arm</b> -Y <b>Range Slot</b> - P <b>Finger Pitch</b> - L or M <b>Reel Clearance</b> - 2" (50 mm) <b>Speed</b> - +10% of ground speed	2 <sup>nd</sup> from front Y Q M 2" (50mm)	2 <sup>nd</sup> from front. Y P J 2" (50mm)	2 <sup>nd</sup> from front X P M 2" (50mm)	2 <sup>nd</sup> from front. X P M 2" (50mm)
<b>Draper Speed</b> - Dial position "4".	-	-	-	-
<b>Draper opening</b> - 49.6" (1260 mm)	-	-	-	-
<b>Guard Angle</b> - 1.0" (25mm) of threads showing on center link. <b>Poly Skids</b> - None	- Yes	- Yes	- Yes	Center link fully retracted. Yes
<b>Gauge Wheels (if equipped)</b> - Most cereals require "position 2" stubble height setting	Storage	Storage	Storage	Storage
<b>Float</b> - Adjust float to achieve 0" gap at downstop pad. (Refer to 873 Operator's Manual)	½" gap	½" gap	½" gap	½" gap

