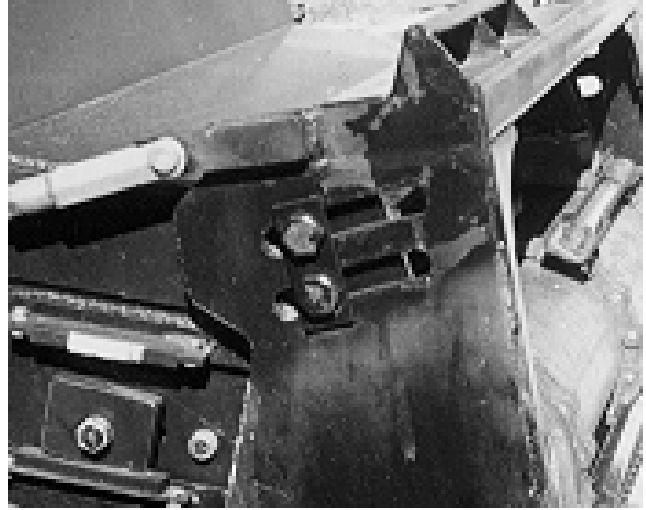


# SET UP OF HARVEST HEADER FOR GLEANER COMBINES

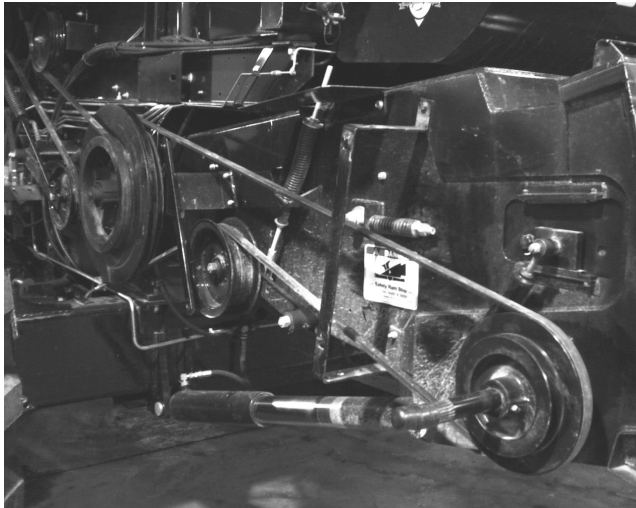
R/60/R62/R70/R72



- 1.) Remove feeder house top, L/H and R/H dust shields.



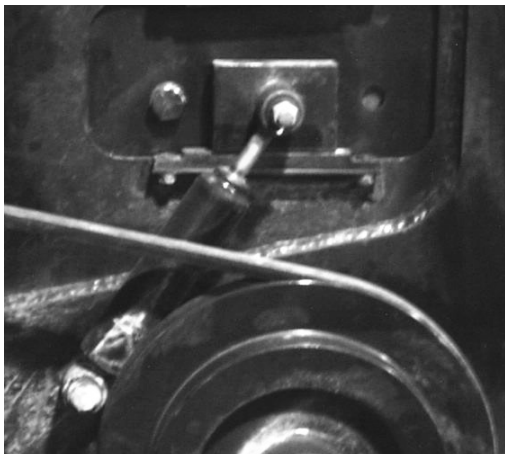
- 4.) Tilt feeder house face plate back at least  $\frac{3}{4}$  of the way.



- 2) Set R/H pivot shaft drive for grain.  
- Position belt on small drive sheave (top)  
and large driven sheave (bottom).



- 5.) Set feeder house drive output speed to 625 rpm.



- 3.) Set feed conveyor drum height to small grains position as per combine operators manual.

# SET UP OF HARVEST HEADER FOR GLEANER COMBINES

R/60/R62/R70/R72

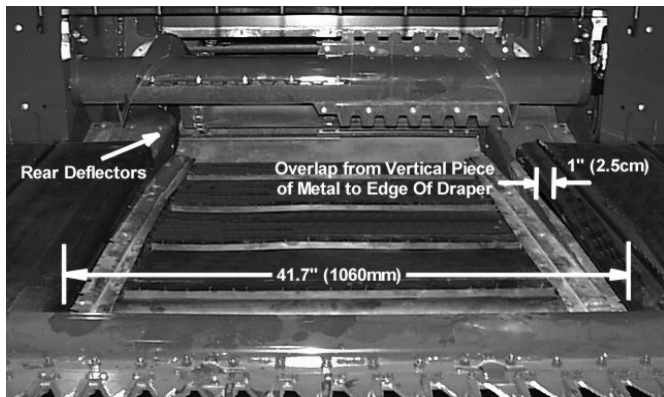
PLEASE REFER TO OPERATORS MANUAL FOR MORE DETAILS ON THE FOLLOWING:

## Initial Adjustments

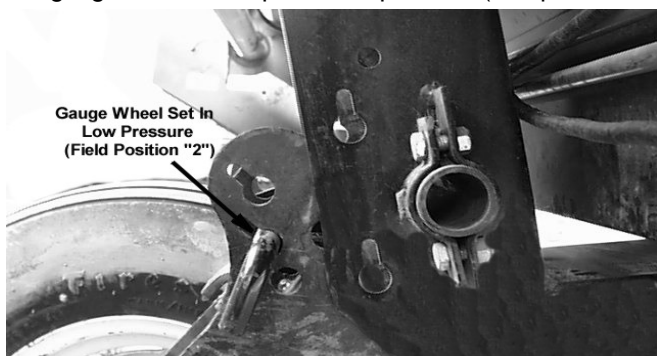
The following is a list of adjustments outlining how each component should be set. This is the best possible starting point for initial use.

## 962 Harvest Header

- ❑ The center delivery opening for all Gleaner combines should be set to 41.7" (1060mm).

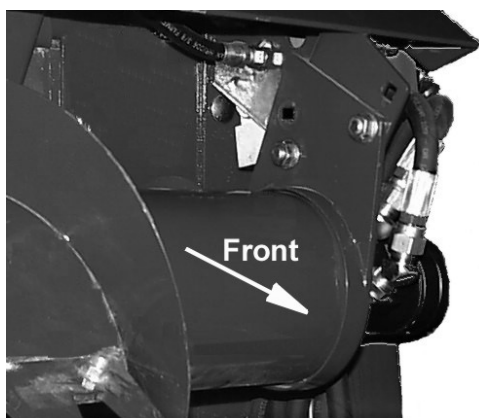


- ❑ Align the deflectors on the feeder pan so that the crop flows smoothly into the feeder house.
- ❑ The left deck is moveable to allow end delivery swathing. Make sure that the left deck is positioned so that the 1" (2.5cm) overlap requirement is met.
- ❑ Leave the draper seals in storage. (Bolted on the back of right panel).
- ❑ Set gauge wheels/transport to low pressure (field position "2").

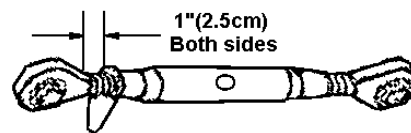


## 871 Combine Adapter

- ❑ Move auger from shipping position to position shown.



- ❑ The mechanical center link between the 962 and 871 should have 1" (2.5cm) of thread showing from each end.



- ❑ The float should be set to 70lbs (32kg) at each crop divider. Use a hook scale if necessary.
- ❑ The bolts that are used to lock out the float for shipping should now be used to fasten the adapter to the header. Pins with spring clips from the hardware package should be used to lock out the float.



- ❑ The flow control should be set to number "4".

## 2000B Pick Up Reel

- ❑ The cam arm should be in the "X" position.
- ❑ The bolt going through the cam arm should be inserted from the inside, out.



- ❑ The pitch should be in the third notch from the top and use the top range slot.
- ❑ The fore/aft position should be in the 5<sup>th</sup> hole (Bat reel 8<sup>th</sup> hole) from the front of the reel lift arm.
- ❑ The clearance from the fingers to the cutterbar should be a minimum of 2" (5cm) for a 30' header, and 1-1/2" (4cm) for 36' headers.
- ❑ Recommended reel speed is 10% above ground speed.