

INTRODUCTION

The MacDon 625 Field Sprayer is designed to be teamed with the MacDon Turbo Windrower tractor to convert the windrower into a self-propelled crop sprayer.

NOTE: This Unloading and Assembly manual outlines the procedures to prepare the MacDon Windrower for the 625 Sprayer attachment and assemble the 625 Spray System. This manual should be used in conjunction with the Operator's Manual for the Self-Propelled Windrower, the Operator's Manual and Parts Catalog for the 625 Sprayer, and the reference manual for the Micro-Trak MT-3405F Rate Controller.

CAREFULLY READ ALL MANUALS TO BECOME FAMILIAR WITH ALL RECOMMENDED PROCEDURES BEFORE ATTEMPTING TO UNLOAD OR ASSEMBLE THE WINDROWER/SPRAYER ATTACHMENT.

Use the Table of Contents to guide you to specific areas. Study the Table of Contents to familiarize yourself with how the material is organized.

NOTE: Right hand (R/H) and left hand (L/H) designations are determined from the operator's position, facing forward.

NOTE: All measurements are in metric units or US unless otherwise stated.



TABLE OF CONTENTS

INTRODUCTION	1
SAFETY ALERT SYMBOL	3
SIGNAL WORDS	3
SAFETY SIGNS	3
SPECIFICATIONS	4
TORQUE SPECIFICATIONS	5
TRANSPORT POSITION	7
WORKING POSITION	8
PREPARE TO UNLOAD	9
UNLOADING TRACTOR UNIT	9
UNLOADING SPRAY SYSTEM	9
PREPARING THE TRACTOR UNIT	11
DRIVING THE TRACTOR UNIT	11
HEADER ANGLE ADJUSTMENT LINK	12
DECK SUPPORT BARS	12
SPRING SUPPORT RODS	12
REAR BOOM MAST ASSEMBLY	13
REAR BOOM HYDRAULICS	14
FOAM MARKER SWITCH	15
PEDESTAL	15
PEDESTAL WIRING CONNECTIONS	16
MT-3405F RATE CONTROLLER	19
CHARCOAL AIR FILTER	19
BOOM CARRIERS and BOOM REST	20
CATWALK and SIDESTEP	20
HANDRAIL	20
PLATFORM and REAR STEP	20
DOORSTOP	21
TRACTOR SAFETY DECALS	21
BALLAST	21
ASSEMBLE SPRAYER ATTACHMENT	21
POSITION THE TANK SUPPORT ON THE TRACTOR	22
HYDRAULIC CONNECTIONS	23
ELECTRICAL CONNECTIONS	23
TEST MAST FUNCTIONS	24
SPEED SENSOR	24
CONNECT L/H BOOM	25
CONNECT R/H BOOM	27
REAR TANK	28
REAR TANK HOSE SUPPORTS	31
CENTER BOOM AT REAR	32
CENTER BOOM AT FRONT	33
FOAM MARKER	34
CROP DIVIDERS	35
BOOM TOUCH-DOWN WHEELS	35
FINAL CHECKS AFTER ASSEMBLY	36

SAFETY

SAFETY ALERT SYMBOL



This safety alert symbol indicates important safety messages in this manual and on safety signs on the sprayer attachment.

This symbol means:

ATTENTION!
BECOME ALERT!
YOUR SAFETY IS INVOLVED!

Carefully read and follow the safety message accompanying this symbol.

Why is SAFETY important to you?

- 3 BIG REASONS
- ACCIDENTS DISABLE AND KILL
 - ACCIDENTS COST
 - ACCIDENTS CAN BE AVOIDED

SIGNAL WORDS

Note the use of the signal words DANGER, WARNING, and CAUTION with safety messages. The appropriate signal word for each message has been selected using the following guidelines:



DANGER – Indicates an imminently hazardous situation that, if not avoided, will result in death or serious injury.



WARNING – Indicates a potentially hazardous situation that, if not avoided, could result in death or serious injury. It is also used to alert against unsafe practices.



CAUTION – Indicates a potentially hazardous situation that, if not avoided, may result in minor or moderate injury. It is also used as a reminder of good safety practices.

SAFETY SIGNS

- Safety signs must be clean and legible.
- Replace safety signs that are missing or have become illegible.
- A list of the required safety signs may be found in the Spray System Operator's Manual.

To install safety signs:

1. Be sure the installation area is clean and dry.
2. Decide on the exact position before you remove the decal backing paper.
3. Remove the smaller portion of the split backing paper.
4. Place the sign in position and slowly peel back the remaining paper, smooth the sign as it is applied.
5. Small air pockets can be smoothed out or pricked with a pin.

SPECIFICATIONS

MacDon 625 Field Sprayer

WEIGHT 4800 lbs. (2181 kg) with tank empty

OPTIONS Foam marker kit
Rear center boom location and kit
Boom "Touch Down Wheels"
Auxiliary rear tank kit for additional 150 US gallon (2080 liters)

REQUIRED MOUNT TRACTOR SPECIFICATIONS:

Turbo Engine Required
Tail Wheel Tires of 16.5L X 16.1 80% filled with Calcium
Chloride for ballast and at 20 psi (140 kPa) pressure **REQUIRED**
16.5L X 16.1 Drive Tire Option Recommended
No. 7 Power Wheel Option Recommended

**SPECIFICATIONS AND DESIGN ARE SUBJECT TO CHANGE WITHOUT NOTICE OR OBLIGATION
TO REVISE UNITS PREVIOUSLY SOLD.**

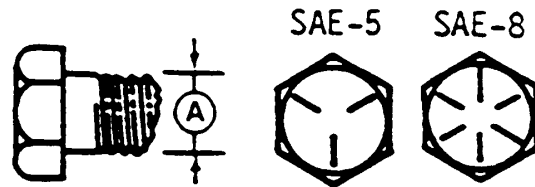
TORQUE SPECIFICATIONS

CHECKING BOLT TORQUE

The tables shown below give correct torque values for various bolts and capscrews. Tighten all bolts to the torques specified in chart unless otherwise noted throughout this manual. Check tightness of bolts periodically, using bolt torque chart as a guide. Replace hardware with the same strength bolt.

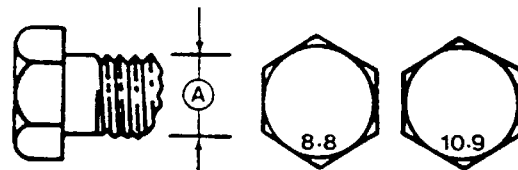
ENGLISH TORQUE SPECIFICATION

Bolt Dia. "A"	NC Bolt Torque*			
	SAE 5		SAE 8	
	N-m	[lb-ft]	N-m	[lb-ft]
1/4"	12	[9]	15	[11]
5/16"	24	[18]	34	[25]
3/8"	43	[32]	56	[41]
7/16"	68	[50]	95	[70]
1/2"	102	[75]	142	[105]
9/16"	149	[110]	202	[149]
5/8"	203	[150]	271	[200]
3/4"	359	[265]	495	[365]
7/8"	569	[420]	813	[600]
1"	867	[640]	1205	[890]



METRIC TORQUE SPECIFICATIONS

Bolt Dia. "A"	Bolt Torque*			
	8.8		10.9	
	N-m	[lb-ft]	N-m	[lb-ft]
M3	0.5	[.4]	1.8	[1.3]
M4	3	[2.2]	4.5	[3.3]
M5	6	[4]	9	[7]
M6	10	[7]	15	[11]
M8	25	[18]	35	[26]
M10	50	[37]	70	[52]
M12	90	[66]	125	[92]
M14	140	[103]	200	[148]
M16	225	[166]	310	[229]
M20	435	[321]	610	[450]
M24	750	[553]	1050	[774]
M30	1495	[1103]	2100	[1550]
M36	2600	[1917]	3675	[2710]



Torque figures indicated above are valid for non-greased or non-oiled threads and heads unless otherwise specified. Do not grease or oil bolts or capscrews unless specified in this manual. When using locking elements, increase torque values by 5%.

* Torque value for bolts and capscrews are identified by their head markings.

TORQUE SPECIFICATIONS

TIGHTENING HYDRAULIC O-RING FITTINGS*

1. Inspect O-ring and seat for dirt or obvious defects.
2. On angle fittings, back the lock nut off until washer bottoms out at top of groove.
3. Hand tighten fitting until back up washer or washer face (if straight fitting) bottoms on face and O-ring is seated.
4. Position angle fittings by unscrewing no more than one turn.
5. Tighten straight fittings to torque shown.
6. Tighten angle fittings to torque shown while holding body of fitting with a wrench.

* The torque values shown are based on lubricated connections as in reassembly.

Thread Size (in.)	Nut Size Across Flats (in.)	Torque Value*		Recommended Turns to Tighten (after finger tightening)	
		N-m	[lb-ft]	Flats	Turns
3/8	1/2	8	[6]	2	1/3
7/16	9/16	12	[9]	2	1/3
1/2	5/8	16	[12]	2	1/3
9/16	11/16	24	[18]	2	1/3
3/4	7/8	46	[34]	2	1/3
7/8	1	62	[46]	1-1/2	1/4
1-1/16	1-1/4	102	[75]	1	1/6
1-3/16	1-3/8	122	[90]	1	1/6
1-5/16	1-1/2	142	[105]	3/4	1/8
1-5/8	1-7/8	190	[140]	3/4	1/8
1-7/8	2-1/8	217	[160]	1/2	1/12

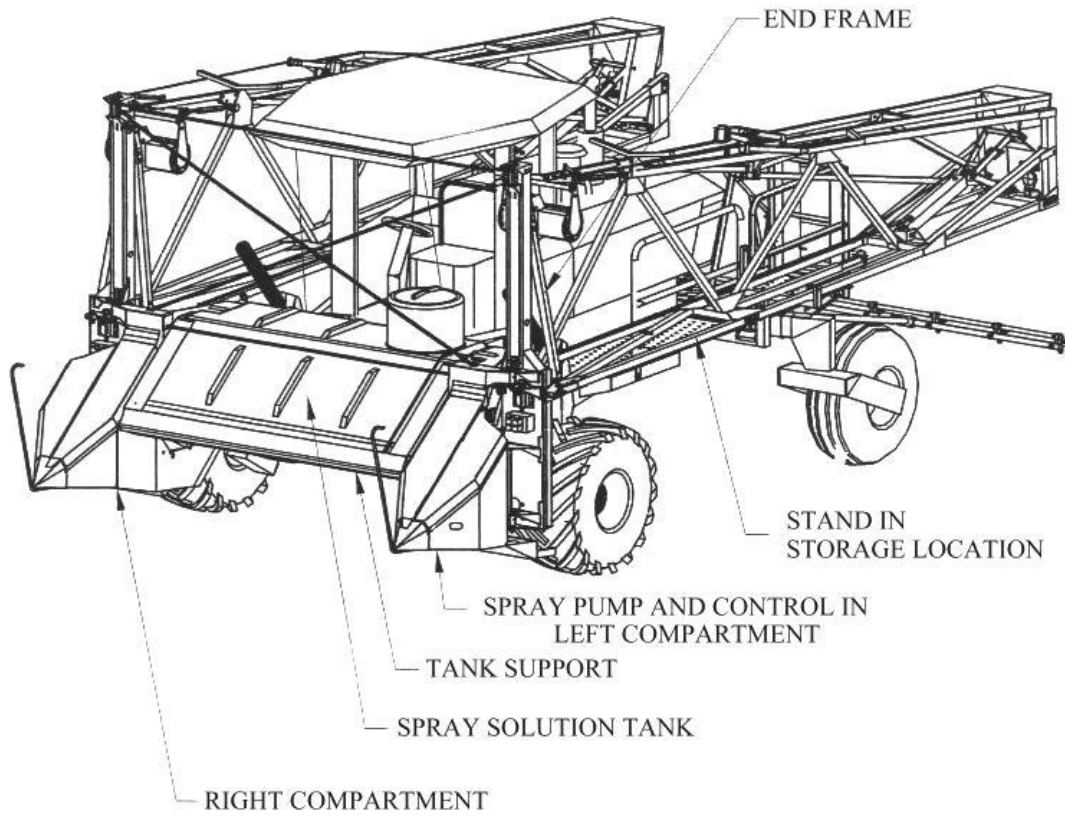
TIGHTENING HYDRAULIC FLARE-TYPE TUBE FITTINGS*

1. Check flare and flare seat for defects that might cause leakage.
2. Align tube with fitting before tightening.
3. Lubricate connection and hand tighten swivel nut until snug.
4. To prevent twisting the tube(s), use two wrenches. Place one wrench on the connector body and with the second tighten the swivel nut to the torque shown.

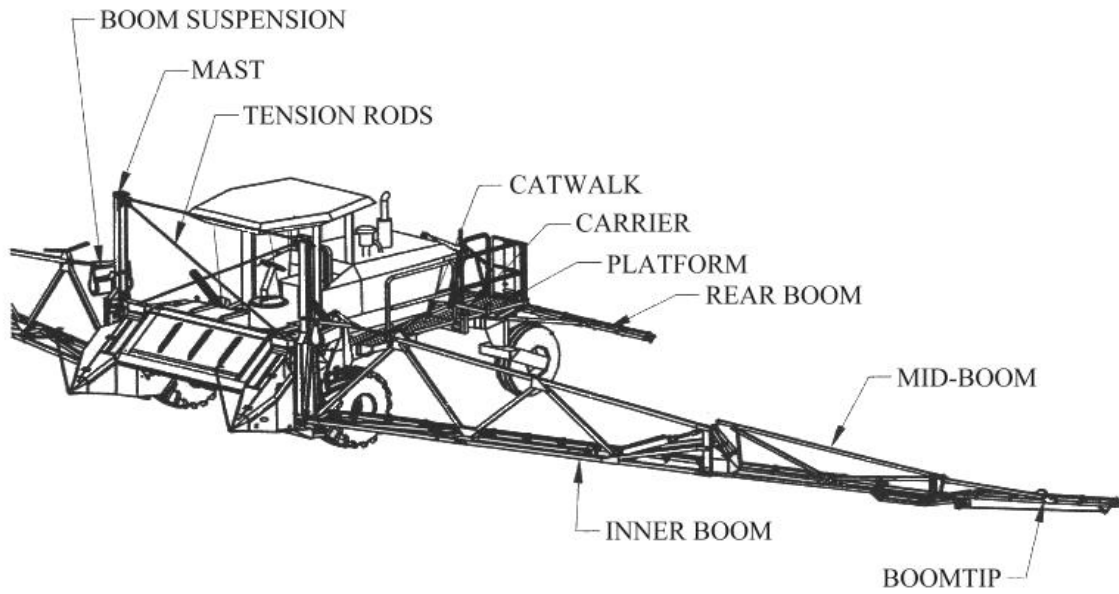
* The torque values shown are based on lubricated connections as in reassembly.

Tube Size O.D. (in.)	Nut Size Across Flats (in.)	Torque Value*		Recommended Turns to Tighten (after finger tightening)	
		N-m	[lb-ft]	Flats	Turns
3/16	7/16	8	[6]	1	1/6
1/4	9/16	12	[9]	1	1/6
5/16	5/8	16	[12]	1	1/6
3/8	11/16	24	[18]	1	1/6
1/2	7/8	46	[34]	1	1/6
5/8	1	62	[46]	1	1/6
3/4	1-1/4	102	[75]	3/4	1/8
7/8	1-3/8	122	[90]	3/4	1/8

TRANSPORT POSITION



WORKING POSITION



UNLOADING

PREPARE TO UNLOAD



CAUTION: To avoid injury to bystanders being struck by machinery, do not allow persons to stand in unloading area.

1. Move trailer into position and block wheels.
2. Lower trailer stands.



CAUTION: Unloading equipment must meet or exceed the specified requirements. Using inadequate equipment may result in vehicle tipping or machine damage.

UNLOADING TRACTOR UNIT

1. Follow the unloading and assembly instructions for the self-propelled windrower. These instructions can be found in the Windrower Operator's manual.

UNLOADING SPRAY SYSTEM

Check the load for the following pieces:

- Tank support
 - L/H & R/H boom package
 - Pedestal/monitor package B2748
 - Crop divider package
 - Platform/Catwalk/Carrier package
 - Center boom package

 - Rear tank package (optional)
 - Foam marker package (optional)
 - Touch-down wheel package (optional)
 - Boom Tilt package (optional)
1. Remove Tank support from trailer and set on ground.
 - a) Set tines on forklift so they align with shipping blocks on under side of tank support.
 - b) Place forklift tines under blocks and lift slowly, until tank support weight is held by the forklift.
 - c) Secure the tank support to the forklift.
 - d) Place the tank support on the ground, making sure it will be stable when it is free standing.



UNLOADING TANK SUPPORT

UNLOADING

UNLOADING SPRAY SYSTEM (continued)

2. Remove the L/H & R/H booms from the trailer.
 - a) Set the tines on the forklift at widest possible setting.
 - b) Place the forks under the boom section between the blind end of the tip lift cylinder and the pivot point of the storage stand.
 - c) Secure the boom to the forklift.
 - d) Set the boom on the ground in a safe place.

Remove the remaining packages from the trailer and set them on the ground in a safe place.



UNLOADING BOOMS

PREPARING THE TRACTOR UNIT

DRIVING THE TRACTOR UNIT

Read the Self-Propelled Windrower Operator's Manual for instructions on starting, driving, stopping, and leaving the Windrower.



WARNING: Avoid driving the machine with the sprayer attachment removed. Removing the sprayer decreases the weight on drive wheels, reducing steering control.

- If necessary to drive machine with sprayer removed, use transmission "field speed" range, do not exceed half maximum engine speed and avoid loose gravel and slopes.
- Because of windrower shape characteristics, a roll-over protected cab (ROPS) cab is not required. If operating with sprayer removed, be aware that the cab structure will not withstand a roll-over.



AVOID DRIVING WITH SPRAYER REMOVED



CAUTION: HYDROSTATIC STEERING

The machine is steered hydrostatically, that is, turning the steering wheel varies the hydraulic flow to one drive wheel relative to the other drive wheel. The reaction of this type of steering is different than conventional steering mechanisms.

Remember:

- With the engine running and the variable speed lever in neutral, the machine will move if the steering wheel is turned.
- Hydrostatic steering is more sensitive than mechanical steering.
- Steering is opposite to normal when driving in reverse.



CAUTION:

1. Never move variable speed lever or steering wheel until you are sure all bystanders have cleared the area.
3. Be sure area is clear before making turns, ends of sprayer booms travel in a large arc.
4. Check the operation of all controls in a safe, clear area before attempting to drive sprayer.
5. Do not allow riders in or on the machine.
6. Operate only while seated in the operator's position.
7. Never attempt to get on or off a moving tractor.
8. Avoid sudden starts or stops.
9. Do not allow anyone to stand behind the machine while operating.

IMPORTANT: See Windrower Operator's Manual for information on the following:

Start-Up Procedure
Driving the Windrower
Stopping Procedure

PREPARING THE TRACTOR UNIT



WARNING: Stay clear of the PTO shaft when the tractor is running. Accidental engagement of the PTO shaft could result in serious bodily injury.

HEADER ANGLE ADJUSTMENT LINK

1. Remove the clevis pin attaching header adjustment link to the tractor.
2. Remove header adjustment link.
3. The link is not used with the spray system attachment and should be stored for use with windrower attachments.

DECK SUPPORT BARS

1. Locate L/H & R/H deck support bars (see page 45 of parts catalog).
2. Locate mounting holes on front edges of tractor deck.
3. Mount the deck support bars making sure the bars are in the proper location to allow the spring supports to be installed.



L/H HOLES FOR DECK SUPPORT



R/H DECK SUPPORT BAR

SPRING SUPPORT RODS

1. Locate the spring support rods (see pg. 45 of parts catalog).
2. Slide the support rod through the tractor deck directly above the slot in the deck support bar (if there is not a hole in this location it will have to be drilled).
3. Slide 1 mounting block onto the support rod.
4. Slide the support rod approximately 50 mm through slot in deck support bar.
5. Tighten the mounting block to keep the support rod from sliding through the deck support bar.
6. Slide the other mounting block on the bottom of the support rod up to the deck support bar and tighten.
7. Set the float spring into the stand.
8. The height of the spring support can be adjusted later, when picking up the tank support with the tractor.



L/H SPRING IN STAND

PREPARING THE TRACTOR UNIT

REAR BOOM MAST ASSEMBLY

1. Locate the Rear Boom package (see pg. 35 of parts catalog).
2. For ease of assembly, drive the tractor unit backwards so the casters point forward.
3. Remove the SMV sign from the rear mounting position.
4. Remove the 4 bolts from the walking beam pivot plate.
5. Position the mast assembly on the pivot plate and loosely reinstall the 4 bolts(c/w lock-washers and nuts) that were removed.
6. Position rear boom mast as far rearward as it can go then snug up the hardware so the mast will not move.
7. Carefully open the tractor engine cover and check for interference with the rear mast.
8. Adjust location of rear mast as required and tighten all hardware.
9. If rear tank assembly is not being used, mount SMV sign on mast with bracket # 107418.



REAR MAST ASSEMBLY



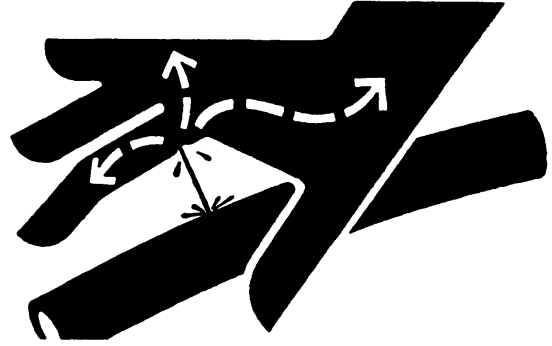
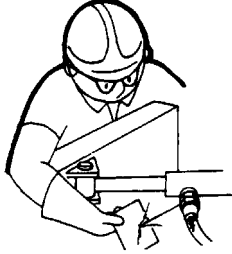
REAR MAST ASSEMBLY ON PIVOT PLATE

PREPARING THE TRACTOR UNIT

REAR BOOM HYDRAULICS



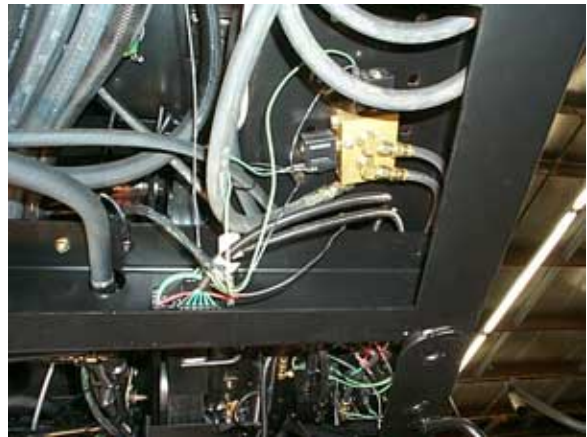
WARNING: Avoid high-pressure fluids. Escaping fluids can penetrate the skin causing serious injury. Use a piece of cardboard or paper to search for leaks.



1. Mount Rear Boom Valve (see pg. 63 of parts catalog) under R/H corner of tractor deck in mounting holes provided (located straight back behind header lift valve).
 - a) Locate rear boom hydraulic package.
 - b) Cap off ports "P" and "T" on the top side of the rear boom valve with # 4 ORB plugs.
 - c) Install 90° elbow # 6ORB x #6- 37° flare fitting in port "B" of rear boom valve.
 - d) Install 90° elbow # 4ORB x #6- 37° flare fitting in ports "P" and "T" on bottom of rear boom valve.
 - e) Cap off port "A" of table angle valve with # 6 ORB plug.
 - f) If For/Aft kit # B2961 and base kit # B2960 have been installed, the rear boom valve mounts under the existing valve stack and ports "P" and "T" on the top side of the rear boom valve are not capped off.
 - g) Bolt valve in place.
2. Remove ORB plugs from ports "W" and "Y" on the cylinder control valve and replace with 90° elbow # 4ORB x #6- 37° flare fittings.
3. Connect port "W" on (L/H side) header lift valve to port "T" on the rear boom valve with hydraulic hose # 112208.
4. Connect port "Y" on (solenoid side) header lift valve to port "P" on the rear boom valve with hydraulic hose # 112208.
5. Connect the hose attached to the rear boom cylinder to port "B" on the rear boom valve.
6. Tighten all fittings.



REAR BOOM HYDRAULIC PACKAGE



MOUNTED REAR BOOM VALVE

PREPARING THE TRACTOR UNIT

FOAM MARKER SWITCH

1. Locate foam marker (optional) package.
2. Locate pedestal (see pg. 47 of parts catalog).
3. Remove self-tapping screws from sides of pedestal and the monitor bracket from the top then carefully slide the plastic cover off (ground wires will keep the cover connected to the metal frame).
4. Cut away decal over mounting hole on pedestal face (hole may need to be enlarged to accommodate switch).
5. Remove fuse from power supply cable on marker switch and replace with butt connector (save fuse for later installation).
6. Mount the foam marker switch in pedestal with self-tapping screws.
7. Run wires from switch along with the other wires found in the pedestal cover.
8. Remount the plastic pedestal cover to the stand with self-tapping screws and the monitor bracket.



PEDESTAL READY FOR SWITCH

PEDESTAL

1. Locate pedestal (see pg. 47 of parts catalog).
2. Disconnect the battery cables before working on the electrical system to avoid any possible shock hazards or equipment damage.
3. Lift up the flooring and locate, then remove, the knockout plug in the Front L/H corner of the cab.
4. Remove the 4 knockout plugs for the pedestal mounting bolts.
5. Locate the corresponding knockout plug underneath the tractor and remove it.
6. Route the wires from the pedestal through the knockout in the tractor floor except for light green wire # A25.
7. Bolt the pedestal to the floor with the self-tapping screws provided.
8. Connect wire # A25 coming from the pedestal to the operator seat switch.
 - a) Locate cable # A25 (approximately 1800 mm long) in the pedestal package.
 - b) Locate the wire going to the operator seat switch at the right rear of the operator's seat.
 - c) Break the connection in the seat switch wire and connect cable # A25 in series in the circuit.
 - d) Route cable #A25 into the bottom of the operator's console (by the park brake) then forward to the base of the console at floor level. At this point the wire should be pulled back through the console and attached to green wire # A25 coming from base of the pedestal.
9. Cut a hole in the flooring around the pedestal and replace the flooring (wire # A25 runs under flooring).
10. Locate the foot switch box and snap the bracket over the footrest beside the steering column.
11. Route the wire from the foot switch box to the pedestal base, then up the back of the base into the pocket on the back of the pedestal.



PEDESTAL AND WIRE # A25



FOOT SWITCH BOX

PREPARING THE TRACTOR UNIT

PEDESTAL WIRING CONNECTIONS

1. Disconnect the battery cables before working on the electrical system to avoid any possible shock hazards or equipment damage.
2. Locate the gray wire # 13221 (10 pin female connector approx. 1.8 m long) and route under tractor floor to the spring support stand on the L/H deck of the tractor (top side).
3. Locate the gray wire # 13221 (10 pin male connector approx. 2 m long) and route under tractor floor to the spring support stand on the L/H deck of the tractor (top side).
4. Locate the black cable for the Dickey John Speed Sensor (round 4 pin female connector approx. 300 mm long) and route under the tractor floor to the spring support stand on the R/H deck of the tractor (top side).
5. Locate the black wire # 2D (4 pin male, braided black covering, approx. 600 mm long) and route under the tractor floor to the spring support stand on the R/H deck of the tractor (top side).



L/H DECK WIRES



R/H DECK WIRES

6. Locate the gray power wire # 13905 for the Micro-Trak monitor (Approx. 2.8 m long, 2 wires).
 - a) Splice yellow fuse holder and fuse into red wire as shown in Micro-Trak manual.
 - b) Attach ring connectors (supplied in monitor hardware package) to ends of wires.
 - c) Route the wire under the tractor to the engine compartment.
 - d) **DO NOT ATTACH POWER SUPPLY CABLES TO BATTERY POSTS.**
 - i. The positive connection should be made at the point where the battery cable attaches to the starter (cover will need to be removed).
 - ii. The negative connection should be made where the negative battery cable attaches to the tractor frame.
7. Locate switchbox # 107230 (in package) and mount on R/H side of tractor frame in holes provided (must drill holes, as shown, on older model tractors).



BATTERY CONNECTIONS



SWITCH BOX

PREPARING THE TRACTOR UNIT

PEDESTAL WIRING CONNECTIONS (continued)

8. Locate cable # 107236 (single gray cable approx. 900 mm long in package).
 - a) Attach male 6-pack to female 6-pack on switchbox.
 - b) Route the wire to the header lift valve (connect wires in step # 11).
9. Locate cable # 107237 (single gray cable approx. 700 mm long in package).
 - a) Attach female 6-pack to male 6-pack on switchbox.
 - b) Route the wire to the header lift valve (connect wires in step # 11).



HEADER LIFT VALVE

10. Locate the longest black wire (braided black covering) connections at 600 mm, 1.5 m and 2.1 m) from the pedestal.
 - a) Route the wire under the tractor floor to the header control valve (located near center of tractor).
 - i. Locate red wire # A19 and connect it to light green wire # 411.
 - ii. Locate dark green wire # 411A and connect it to dark green wire 411.
 - iii. Disconnect light green wire # 414 from S3 and connect to light green wire # A28A.
 - iv. Connect light green wire # A28A to S3.
 - v. Disconnect black wires # 415A and # 415B from S3 (these wires do not reconnect).
 - vi. Connect black wire #A16 to S3.



HEADER CONTROL VALVE

- b) Route the section of black braided wire (approx. 2.1 m long with 1 male and 1 female 4-pack plug) to the spring support on the L/H tractor deck.
- c) Route the remaining wires under the tractor to the header lift valve and wires #107236 and #107237 (steps 9 & 10).
- d) Disconnect wires from solenoids and attach to wires from Cable # 107237:
 - i. Disconnect dark green wire # 433 and attach to dark green wire # 433A.
 - ii. Disconnect dark green wire # 441 and connect to dark green wire # 441A.
 - iii. Disconnect dark green wire # 442SS and connect to dark green wire # 442ASS.
 - iv. Disconnect dark green wire # 443 and connect to dark green wire # 443A.
 - v. Disconnect dark green wire # 444 and connect to dark green wire # 444A.

Connect wires from cable # 107236 to solenoids:

- vi. Connect light green wire # 433A to solenoid S1.
- vii. Connect light green wire # 441A to solenoid S4.
- viii. Connect light green wire # 442SSA to solenoid S5.
- ix. Connect light green wire # 443A to solenoid S2.
- x. Connect light green wire # 444A to solenoid S3.

Ground wires:

- xi. Disconnect the black ground wires from solenoids S3, S4 and S5 and leave disconnected.
- xii. Connect black ground wires # 415 A, # 415B and # 415C to solenoids S3, S4 and S5.
- xiii. Leave black wire # 415D disconnected.
- xiv. Connect black wire # 415A to black wire # 415M.
- xv. Connect black wire # A23 to black wire # 415L/415M.

Continued on next page...

PREPARING THE TRACTOR UNIT

PEDESTAL WIRING CONNECTIONS

10. (continued)

- e) Route the remaining wire under the tractor to the rear boom valve.
 - i. Connect light green wire # A21 to solenoid S10.
 - ii. Connect light green wire # A22 solenoid S9.
 - iii. Connect black wire # A23C to solenoids S9 and S10.
- f) Route the remaining wire under the tractor to the knife drive valve (located at rear R/H side of tractor).
 - i. Remove black wire # 415Q from solenoid S6 and leave disconnected.
 - ii. Connect black wire # 415E to solenoid S6.

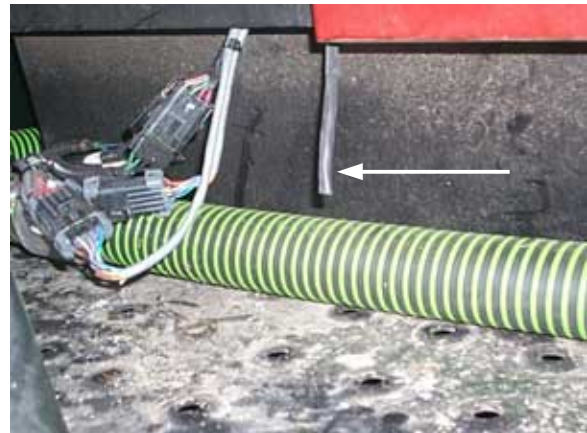
11. Secure all wiring to tractor with plastic tie straps to keep the wiring from catching on crop passing under sprayer while working in the field.

12. Make electrical connections for the foam marker switch as shown in foam marker manual (optional).

- a) Install the fuse on the end of the power cable from the foam marker switch (was removed when installing foam marker switch in pedestal).
- b) Route the power supply cables under the tractor to the engine compartment.
- c) **DO NOT ATTACH POWER SUPPLY CABLES TO BATTERY POSTS.**
 - i. The positive connection should be made at the point where the battery cable attaches to the starter (cover will need to be removed).
 - ii. The negative connection should be made where the negative battery cable attaches to the tractor frame.
- d) Route the remaining cable (flat plug connector) under the cab floor to the spring support stand on the L/H deck of the tractor.
- e) Cut off cable approximately the same length as the other wire connections at this point.
- f) Cut the flat plug off of the cable removed and attach to end of shortened cable.
- g) Remove the flat plug from the foam marker tank and hard wire the removed cable to the tank.
- h) Add an extension of approximately 3 feet to this cable and route it from the foam marker tank (mounted on the L/H boom) along with the other wires until it reaches the connection position in the L/H up-stop.
- i) Attach another flat plug to the end of this cable so it will connect to the cable coming from the tractor to the L/H support rod.
- j) Secure all wiring to tractor with plastic tie straps to keep the wiring from catching on crop passing under sprayer while working in the field.



FOAM MARKER FUSE



CUT-OFF FOAM MARKER CABLE



REMOVE PLUG AND ATTACH CABLE

PREPARING THE TRACTOR UNIT

MT-3405F RATE CONTROLLER



CAUTION: Improper electrical connections can result in damage to the console. Read the MT-3405F reference manual and become familiar with the procedures before attempting to connect the console.

1. Locate and read MT-3405F reference manual.
2. Locate MT-3405F console and mounting hardware.
3. Mount console in bracket on top of pedestal.
4. Locate the power supply cable (no ID tag) and attach the 3-pin male connector from the console to the 3-pin female connector from the pedestal.
5. Locate the 10-pin female connector (red ID tag) from the console.
 - a) Attach the 10-pin female connector to the 10-pin male connector from the pedestal.
 - b) Locate the 3-pin connection (gray ID tag) on this cable and separate the connection.
 - c) Attach the 3-pin female connector (gray ID tag) to the male 3-pin run/hold connector from the foot switch (installed during pedestal installation).
6. Locate the 10-pin male connector (clear ID tag) from the console and attach to the 10-pin female connector from the pedestal.
7. Locate the sealed 10-pin connector (blue ID tag) on from the console.
 - a) **DO NOT USE THE 10-PIN FEMALE CONNECTOR** this connector is not used and will damage the console if accidentally attached to another connector.
 - b) Leave the 10-pin connector sealed with the black tie strap.
 - c) Locate the 3-pin connection (yellow ID tag) and separate the connection.
 - d) Attach the 3-pin female connector (yellow ID tag) from the console to the 3-pin male connector from the pedestal (speed sensor cable).
 - e) The remaining 3-pin connector (blue ends) on this cable is not used.
 - f) After connections have, all plugs should be hidden in the cover on the back of the pedestal.



CONSOLE MOUNTED IN BRACKET

CHARCOAL AIR FILTER



WARNING: Chemicals used for spraying can be very hazardous and should not be inhaled. It is very important to make sure the charcoal filter is installed before spraying.

1. **DO NOT INSTALL CHARCOAL FILTER until sprayer is delivered to customer,**
2. Remove original filter from retainer on rear of tractor cab.
3. Mark installation date on new charcoal filter.
4. Install Charcoal filter in retainer on rear of cab.

PREPARING THE TRACTOR UNIT

BOOM CARRIERS and BOOM REST

1. Locate L/H and R/H boom carriers c/w boom rests and hardware (see pages 41 & 43 of parts catalog).
2. Locate mounting holes for L/H boom carrier on L/H side of tractor at rear.
3. Bolt L/H carrier to tractor frame (reinforcing bar behind tractor frame on top holes).
4. Install L/H boom rest into carrier.
5. Repeat procedure for R/H boom carrier and rest.



L/H BOOM CARRIER & REST

CATWALK and SIDESTEP

1. Locate Catwalk (c/w door) and step (see pg. 91 of parts catalog).
2. Remove existing step and toolbox bracket from L/H side of tractor.
3. Locate mounting holes for catwalk on L/H side of tractor below cab door.
4. Mount catwalk onto side of tractor.
5. Attach new side step to bottom of catwalk.



CATWALK C/W DOOR

HANDRAIL

1. Locate handrail (see pg. 91 of parts catalog).
2. Remove shipping bolt from front left corner of catwalk door and open door.
3. Place L/H end of handrail on top of catwalk and attach loosely to slots provided.
4. Place R/H end of handrail under top edge of L/H boom carrier, in cutout provided, and secure in place.
5. Tighten all hardware.

PLATFORM and REAR STEP

1. Locate platform c/w rear step (see pg. 93 of parts catalog).
2. Remove u-bolts from packing position.
3. Set platform on L/H side of walking beam beside engine compartment with step facing rearward.
4. Slide u-bolts over walking beam into mounting holes on platform.
5. Slide platform to the left until the handrail lines up with the handrail on the catwalk, then tighten u-bolts to hold platform in place.
6. Lower step on rear of platform.
7. Inspect location of platform to make sure it will not contact the body of the tractor and adjust as required.



PLATFORM AND REAR STEP

PREPARING THE TRACTOR UNIT

DOORSTOP

1. Locate new (short) doorstop.
2. Remove existing doorstop.
3. Install new doorstop.



DOORSTOP

TRACTOR SAFETY DECALS

1. Locate the package containing the tractor decals.
2. Identify each decal and its location (diagram supplied in package).
3. Clean the area where the decal is to be applied with a mild detergent and a clean cloth.
4. Make sure the area is dry before applying the decal.
5. Remove the backing from the decal and apply.
6. Smooth decal with a soft cloth to remove any bubbles.

BALLAST



WARNING: Do not operate the tractor with the spray system attached unless the rear tank option has been installed or ballast has been added to the rear tires. The weight of the sprayer with a full front tank may reduce the stability of the tractor in certain circumstances.

NOTE: Ballast is not required if rear tank option is installed.

1. Confirm the rear tires are the required 16.5L x 16.1.
2. Have a qualified technician fill both rear tires to 80% capacity with fluid and inflate to 18 to 20 psi.
3. Adjust the air pressure in the front tires to 40 psi.

ASSEMBLE SPRAYER ATTACHMENT

POSITION THE TANK SUPPORT ON THE TRACTOR

1. Approach tank support from the front and position forklift tines under shipping blocks strapped to the underside.
2. Remove the 4 mounting handles from the tank support (see photos at bottom of page).
3. Loosen the bolts on the stops on the back of the tank support and slide them down to their lowest position.
4. Lift tank support about 10 to 12 inches off of the ground with the forklift.
5. Switch toggle on sprayer pedestal to windrower position.
6. Lower the linkage arms on the tractor and carefully approach the raised tank support.
7. Line up the linkage arms on the tractor with the mounting pockets on the rear side of the tank support.
8. Before driving the linkage arms into the mounting pockets stop the tractor and check the following:
 - a) Spring support stands are holding the springs above the top of the tank support so they will not make contact when inserting the linkage arms into the mounting pockets.
 - b) Mounting pins have been removed from the tank support.
 - c) The header adjustment link has been removed from under the tractor.
 - d) All hoses and wiring are secured safely and will not be damaged when tanks support is attached.
 - e) Confirm stops on tank support have been lowered.
9. Slowly drive the tractor ahead and insert the linkage arms into the pockets.
10. Slowly raise the linkage arms (keep top linkage arm near the top of the mounting pocket) while driving the linkage arms into the mounting pockets with the tractor.
11. Raise the linkage arms until the tractor picks the tank support off of the tines on the forklift.
12. Continue lifting the tank support with the tractor linkage until the stops hit the front of the tractor deck then turn off the tractor.
13. Attach the tank mount to the tractor with the 4 mounting handles and hairpins (bottom mounting pin has 2 possible locations depending on tractor).



LIFT TANK SUPPORT



R/H STOP & HOSES READY TO PICK UP



R/H TOP MOUNTING HANDLE



R/H BOTTOM MOUNTING HANDLE

ASSEMBLE SPRAYER ATTACHMENT

POSITION THE TANK SUPPORT ON THE TRACTOR (continued)

14. Make sure the tank support is secured to the tractor with the mounting handles.
15. Lower the tines on the forklift and back it away.
16. From under the tractor, tap up the stops on the tank support until they contact the tractor deck and tighten bolts to keep them in place.

HYDRAULIC CONNECTIONS



WARNING: Avoid high-pressure fluids. Escaping fluids can penetrate the skin causing serious injury. Use a piece of cardboard or paper to search for leaks.

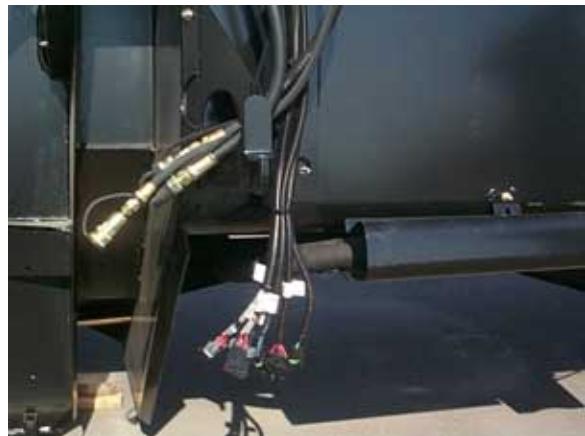
1. Locate the hydraulic quick couplers on the R/H rear corner of the tank support.
 - a) Connect the female quick coupler from the tank support to the male quick coupler for the reel drive return line on the tractor.
 - b) Connect the male quick coupler from the tank support to the female quick coupler for the reel drive pressure line on the tractor.
2. Locate the hydraulic quick couplers on the L/H rear corner of the tank support.
 - a) Connect the small female quick coupler from the tank support to the male quick coupler for the reel lift on the tractor.
 - b) Connect the large female quick coupler from the tank support to the male quick coupler for the conveyor drive pressure line on the tractor.
 - c) Connect the male quick coupler from the tank support to the female quick coupler for the conveyor drive return line on the tractor.

ELECTRICAL CONNECTIONS

1. Locate the electrical couplers on the R/H rear corner of the tank support.
 - a) Connect the black 4-pin female plug from the tank support to the black 4-pin male connector (# 2-D) on the R/H deck of the tractor.
2. Locate the electrical couplers on the L/H rear corner of the tank support.
 - a) Connect the 10-pin female plug from the tank support to the 10-pin male plug on the L/H tractor deck.
 - b) Connect the 10-pin male plug from the tank support to the 10-pin female plug on the L/H tractor deck.
 - c) Connect the black 3-pin male plug from the tank support to the black 3-pin female plug under the L/H corner of the tractor deck.



L/H STOP UP TO DECK



L/H HYD. & ELEC. CONNECTIONS



R/H HYD. & ELEC. CONNECTIONS

ASSEMBLE SPRAYER ATTACHMENT

TEST MAST FUNCTIONS

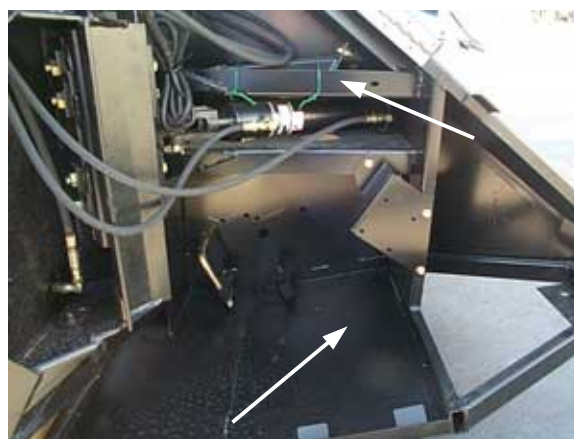
1. Start the tractor and select Sprayer mode on the pedestal.
2. Check the function of the A-Frames.
 - a) Use the L/H dimmer switch on the foot switch box to select the Boom Lift function on the pedestal.
 - b) Use the corresponding left and right thumb switches on the speed control lever to cycle the A-Frames up and down (+ should be up, - should be down).
 - c) If the functions do not operate properly, remove the plastic cover from the solenoids on the mast and check the wiring with the schematic found in the operator's manual.
3. Check the function of the masts.
 - a) Use the L/H dimmer switch on the foot switch box to select the Tip Lift/Swing function on the pedestal.
 - b) Lift the A-Frame to the top of the mast (this is only position mast can rotate).
 - c) Use the corresponding left and right thumb switches on the speed control lever to rotate the masts.
 - d) If the masts do not rotate properly, remove the plastic cover from the solenoids on the mast and check to make sure the selector valve is lifted up when the A-Frame is at the top of the mast.



MAST SOLENOIDS & SELECTOR VALVE

SPEED SENSOR

1. Locate the Dickey John speed sensor package.
2. Mount speed sensor on the bracket inside the R/H pod pointing down through opening.
3. Tie down optional speed sensor mounting bracket (see pg. 47 of parts catalog) on bracket above the swing cylinder.
4. Route the cable from the speed sensor through the opening in the pod (along with steel hydraulic lines) up to the R/H stop on the rear of the tank support (same length as other plugs at this point).
5. Attach speed sensor cable to the steel lines with plastic tie straps.
6. Coil up extra speed sensor wire and attach to the mounting bracket with plastic tie straps.



SPEED SENSOR MOUNTING BRACKETS

ASSEMBLE SPRAYER ATTACHMENT

CONNECT L/H BOOM



DANGER: Stay clear of overhead power lines. When operating a high clearance sprayer electrical shock or electrocution is possible if contact is made with overhead lines.



WARNING: Avoid high-pressure fluids. Escaping fluids can penetrate the skin causing serious injury. Use a piece of cardboard or paper to search for leaks.

1. Locate L/H boom (yellow wash tank) and pick up with forklift.
2. Remove storage stand tube from L/H pod.
3. Start the tractor and use the sprayer controls to position the L/H mast so the trolley wheels on the boom can be slipped into the bottom of the mast (about 45° angle).
4. Use the sprayer controls to lower the A-frame to the bottom of the mast.
5. Lift up boom tip (by hand) and put a 4x4 block in the cradle of the boom to decrease the possibility of smashing the boom tip into the mast during assembly.



BLOCK IN CRADLE

6. Maneuver forklift so the trolley wheels on the end of the boom are directly under the track of the mast (be careful not to smash the boom tip into the mast while doing this).
7. Remove shipping straps from the trolley wheels and the mounting pins from the spindles.
8. Lift boom up with the forklift and guide the trolley wheels into the track on the mast.



L/H BOOM READY FOR ASSEMBLY



STORAGE STAND TUBE REMOVED



MAST & TROLLEY WHEEL

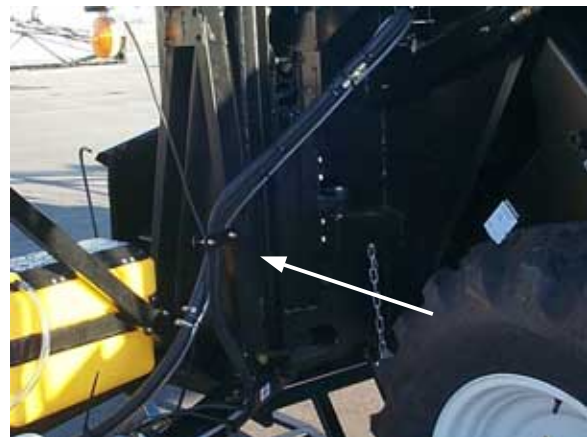
ASSEMBLE SPRAYER ATTACHMENT

CONNECT L/H BOOM (continued)

9. Lift boom up further with the forklift until the mounting flange on top of the spindle slides into the opening on the A-frame (see pg. 15 of parts catalog).
10. Secure the boom to the A-frame with clevis pins.
11. Attach the top of the boom to the vertical suspension with the linkage assembly (see pg. 12 of parts catalog).
12. Switch the pedestal to Tip Lift/Swing and use cab controls to lift boom away from forklift.
13. Back away forklift and make hydraulic, electrical and spray system connections.
 - a) Route all cables and hose from L/H mast through the bracket on the A-frame.
 - b) Connect hydraulic hoses from mast to steel lines on the boom (orange to orange).
 - c) Connect wiring from the mast to wiring on the boom.
 - d) Connect the 3/4 inch spray system hose from the mast to the hose on the boom.
 - e) Connect 1/4 inch plastic hose from mast to the barb between the first and second nozzles on the boom.



BOOM LINKAGE ASSEMBLY



HOSES ROUTED THROUGH BRACKET



L/H BOOM TO MAST CONNECTIONS

14. Remove the 4x4 block from under the boom tip and use the sprayer controls to unfold the boom.



L/H MAST TO BOOM CONNECTIONS

ASSEMBLE SPRAYER ATTACHMENT

CONNECT L/H BOOM (continued)

15. Move the spray nozzle section from shipping position.
 - a) Locate the last tube at the end of the inner boom with 3 spray nozzles mounted on it.
 - b) Detach this section and mount in line with the other spray nozzles on the boom.
 - c) Position the section so the spacing between the nozzles is the same from one section to the next.
 - d) Tighten the clamps to hold the section in place.
16. Fold and unfold the outer boom section several times with the sprayer controls.
 - a) Check to make sure the boom unfolds when the “-” toggle in the speed control lever is depressed and fold up when “+” is depressed (hydraulic line connections can be reversed to correct).
 - b) Observe the action of the breakaway tip and adjust if required (see Operator’s Manual).
 - c) Observe the action of the hoses at the pivot points and adjust if required.



NOZZLES IN SHIPPING POSITION



NOZZLE FOLDING ROD

17. Maneuver boom from field position to transport position several times.
 - a) Check to make sure the boom swings towards the tractor when the “-” toggle is pushed on the speed control lever and away from the tractor when the “+” toggle is pushed (see Test Mast Functions in this manual to adjust).
 - b) Observe the motion of the hose between the mast and the tank support and adjust as required.
 - c) Observe the folding action of the nozzle mount tubes and adjust as required.
18. Adjust eyebolt so boom is level in field position.
19. Use sprayer controls to put boom in transport position.
20. Reinstall storage tube removed in step # 2.

CONNECT R/H BOOM

1. Repeat procedure used for installing L/H boom, beginning on page 25.

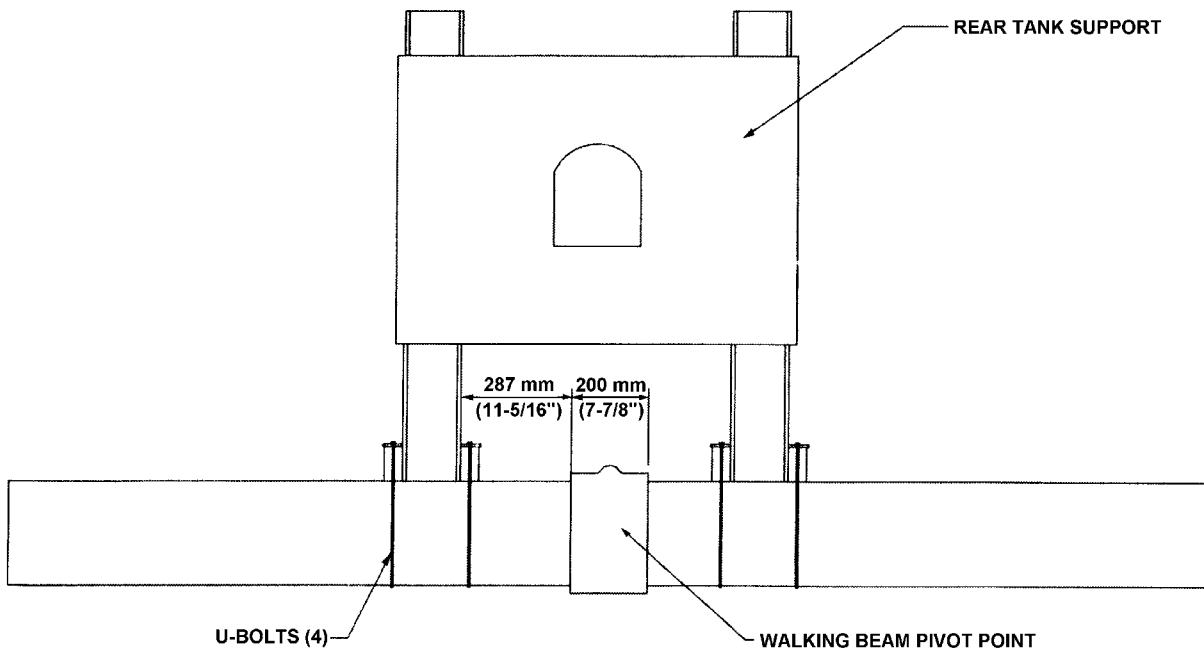
ASSEMBLE SPRAYER ATTACHMENT

REAR TANK

1. Locate rear tank package.
2. Remove taillights from tractor (remount at end of procedure).
3. Refer to diagram below and mark the location of the rear tank on the walking beam.
4. Remove the u-bolts from the rear tank assembly and slide them over the walking beam in the approximate mounting location.
5. Pick up the rear tank assembly with the forklift and line up the mounting brackets on the tank about 2 feet back from the u-bolts on the walking beam.
6. Remove the shipping wires from the hoses and let them hang down beside the rear tank.
7. **BE CAREFUL NOT TO CONTACT THE REAR BOOM MAST** and slowly drive the forklift ahead until the u-bolts slide into the mounting position on the rear tank assembly.
8. Put the nuts on the u-bolts but do not tighten.



REAR TANK PACKAGE



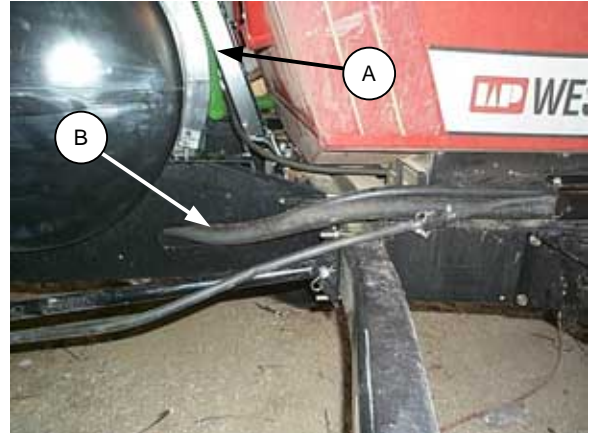
ASSEMBLE SPRAYER ATTACHMENT

REAR TANK (continued)

9. Check the position of the rear tank.
 - a) Tank should be as far to the right as possible so the tank lid fits between the arms on the top support link (adjust location of lever for rear step if required).
 - b) There should be 10 to 15 mm (1/2") space at (A) between the rear boom mast and the widest point on the rear tank. Adjust the position of the rear boom mast to get the required clearance. If the rear boom mast is moved make sure to check the clearance between rear boom mast and open engine cover.
10. **Confirm the clearance between the tank, the mast and the tractor engine cover**, then tighten the u-bolts.
11. Route the 1-1/2 inch suction hose (B) and the 3/4 inch agitation line from the sump on the rear tank to the R/H deck of the tractor.



TANK LID BETWEEN ARMS



MAST CLEARANCE &
HOSES TO R/H TRACTOR DECK

12. Locate the 1-1/2 inch suction hose with a quick coupler at one end and no fitting at the other end (2-90° elbows near coupler).
 - a) Connect the quick coupler to the 1-1/2 inch suction hose on the R/H tractor deck (from rear tank).
 - b) Route the end of the hose with no fitting along the deck then down between the tank support and the tractor deck (adjust 90° elbows as required).
 - c) Continue routing the hose along the back of the tank support into the hose support bracket.
 - d) Continue routing the hose into the L/H pod where it is attached to the 1-1/2 inch x 90° elbow going into the 3-way valve.
 - e) Make sure hose clamp on this connection is tight.



1 1/2" HOSE FROM R/H DECK



3-WAY VALVE

ASSEMBLE SPRAYER ATTACHMENT

REAR TANK (continued)

13. Locate the $\frac{3}{4}$ inch agitation line with the $\frac{3}{4}$ inch male pipe thread fitting at one end and a quick coupler at the other end.
 - a) Apply Rector Seal # 21 to the male pipe thread fitting.
 - b) Thread the fitting into the female tee located at the bulkhead for the agitator on the back of the main tank.
 - c) Route the other end of the hose along the back of the tank support up to the L/H tractor deck (adjust 90° elbows as required).
 - d) Attach quick coupler to quick coupler on agitation line from rear tank.
14. Locate 2 inch vent line coming from top of the rear tank.
 - a) Route the hose along the deck on the L/H side of the tractor.
 - b) Attach the hose to the front L/H corner of the rear tank mount.
15. Locate the Section of 2 inch hose with a quick coupler at one end, a 90° elbow in the middle and no fitting at the other end.
 - a) Connect the quick coupler to the quick coupler on the vent line from the rear tank (on L/H deck).
 - b) Route the remaining hose between the tank support and the tractor deck to the 90° elbow coming out of the back of the main tank.
 - c) Attach the line to the elbow.
16. Make sure the lid on the rear tank is tight.
17. Mount taillights.
 - a) Locate tail light extension harness # 107082.
 - b) When rotating the light for mounting in the new bracket, make sure to rotate the lens 180°.
 - c) Mount lights on rear corners of rear tank support.
 - d) Connect lights to tractor with wire harness.
18. Mount SMV sign on bracket on rear tank support.



$\frac{3}{4}$ INCH AGITATION LINE



VENT LINE ATTACHED TO REAR TANK

ASSEMBLE SPRAYER ATTACHMENT

REAR TANK HOSE SUPPORTS

1. Locate the extension for the rear boom (1/2 inch hose with quick coupler at both ends).
2. Locate the hose support for the R/H side of the tractor ("L" shaped with flange, see pg. 37 of parts catalog).
 - a) Lay the rear boom hose extension on the R/H tractor deck with the other hoses.
 - b) Slide the hose support (parallel to the deck) over all the hoses on the deck (3).
 - c) Slide the hose support until the slots in the mounting flange line up with the slots on the side of the tractor.
 - d) Arrange the hoses neatly.
 - e) Bolt the hose support to the tractor.
3. Locate the hose support for the L/H side of the tractor ("U" shape with flange, see pg. 37 of parts catalog).
 - a) Slide the support over the 2 inch vent line from the rear tank.
 - b) Lift up R/H end of the support until the mounting hole lines up with mounting hole (located under coolant decal by hood release handle) in the tractor and bolt it loosely.
 - c) Lift up the L/H end of the support bracket and insert bolt when the mounting holes line up.
 - d) Adjust the hose so it runs smoothly downward from the rear tank to the front tank.
 - e) Tighten the bolts on the hose support bracket.



REAR LIGHTS AND SMV



L/H HOSE SUPPORT BRACKET

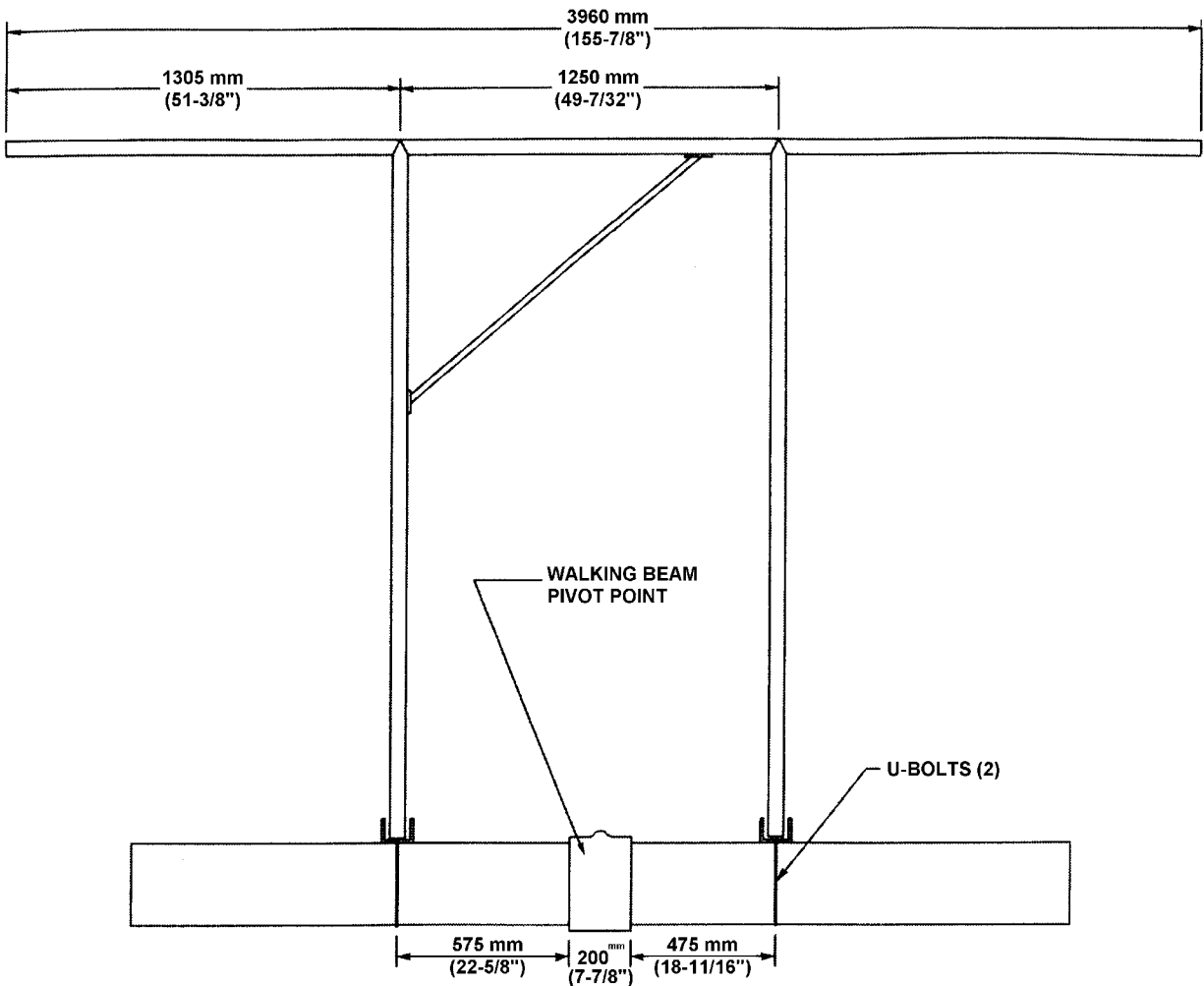


R/H HOSE SUPPORT BRACKET

ASSEMBLE SPRAYER ATTACHMENT

CENTER BOOM AT REAR

1. Locate the center boom and the rear boom package (see pg. 35 of parts catalog).
2. Mount the clevis brackets on the walking beam in the location shown on the drawing below.
3. Attach the center boom the rear boom arms (u-bolts and nozzles face down) but do not tighten u-bolts.
4. Mount the boom arms in the clevises on the walking beam.
5. Attach the rear boom to the support link on the rear mast.
 - a. Remove the chains from inside the top support link arms.
 - b. Attach chain to each arm of the support link.
 - c. Attach the 4th link from the end of the chain to mounting hole on the rear boom arms.
 - d. Mount the cross brace from the center boom to the R/H boom arm (see pg. 35 of parts catalog).



ASSEMBLE SPRAYER ATTACHMENT

CENTER BOOM AT REAR (continued)

6. Check the operation of the rear boom.
 - a) Start the sprayer and slowly lift the rear boom.
 - b) Check clearance between boom arms and rear tank.
 - c) Make sure boom will not hit ground at lowest position.
 - d) Make sure boom will not hit ends of L/H and R/H booms (in transport position) at highest position.
 - e) Bleed air from the rear boom cylinder with screw at top of cylinder.
 - f) Lift boom to horizontal position, adjust nozzles to point straight down, and then tighten u-bolts.
 - g) Cycle boom up and down several times and tighten all remaining bolts after proper boom operation is confirmed.
7. Attach the supply hose for the rear boom.
 - a) Cut the tie straps holding the coupling hose to the center boom.
 - b) Route the coupling hose along the R/H rear boom arm to the tractor deck.
 - c) Attach the coupling hose to the extension in the R/H hose support on the side of the tractor.
 - d) Locate the hose from the center ball valve (R/H front corner of tank support) and attach to the coupling hose extension.
 - e) Secure the coupling hose to the R/H boom arm with tie straps.



CENTER BOOM AT REAR

CENTER BOOM AT FRONT (optional)

1. Locate front boom arms (see pg. 33 of parts catalog).
2. Attach center boom to arms (removed from rear).
3. Attach chain bracket to mounting location on outer arm of A-frames.
4. Attach chains to front boom arms (removed from rear).
5. Attach front boom arms to mounting location on the outer arm of the A-frames.
6. Attach chains to chain bracket on A-frame.
7. Route the supply hose for center boom along L/H boom arm and connect to hose from center ball valve (disconnected from rear boom).
8. Secure the supply hose to the L/H boom arm with tie straps.
9. Adjust the height of the center boom.
 - a) Start the sprayer and swing both the L/H and R/H booms into field position.
 - b) Adjust the chains to the center boom until it is at the same height as the outer booms.
 - c) Tighten all hardware.
 - d) Return outer booms to field position.



CENTER BOOM AT FRONT

ASSEMBLE SPRAYER ATTACHMENT

FOAM MARKER (optional)

1. Locate the box with the foam marker and assembly hardware.
2. Mount foam marker tank in position allocated in L/H boom (beside emergency wash tank).
3. Route the cable from the foam marker (modified during pedestal wiring procedure) along with the electrical harness for the lights, to the connection point on the back of the tank support, at the L/H deck stop.
4. Install a new a new plug on the end of this cable and connect it to the mating plug on the L/H tractor deck.



FOAM MARKER MOUNTED IN L/H BOOM

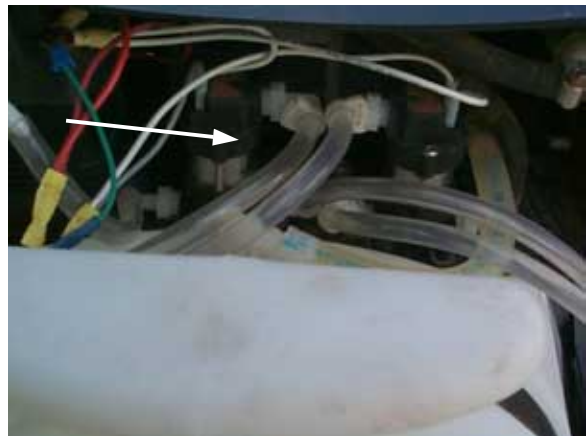


SCREWS IN FOAM MARKER CHAMBER



L/H FOAM MARKER CHAMBER

5. Attach the mounting brackets for the foam chambers.
 - a) Locate the foam chamber mounting brackets.
 - b) Start the sprayer and put the L/H and R/H booms in field position.
 - c) Bolt the mounting bracket for the foam chamber to the end of the boom tip. The bracket mounts on the top and points rearward.
6. Assemble the foam marker tip.
 - a) Follow assembly instructions in foam marker box.
 - b) Attach gray hose to chamber and boot with screws before clamping with hose clamps.
7. Set the foam chamber in the mounting bracket facing rearward.
8. Secure the foam chamber to the mounting bracket with 2 hose clamps.
9. Route ¼ inch plastic hoses from foam chamber to foam marker tank and attach to boom with tie straps (follow spray system hoses at pivot points).
10. Put hose clamps on where the hoses connect to the solenoids on the foam marker tank.
11. Put hose clamps on suction hose inside foam marker tank.



CLAMPS ON FOAM MARKER SOLENOIDS

ASSEMBLE SPRAYER ATTACHMENT

CROP DIVIDERS

1. Locate crop divider package (see pg. 37 of parts catalog).
2. Pin the rear divider link to the tank support at the base of the mast.
3. Bolt the front divider assembly chain to one of the holes located in the bottom of the point at the front of the tank support.
4. Bolt the rear divider chain to the hole located in the tank support gusset directly in front of the tractor wheel.
5. Adjust pins and chains to desired height then tighten all hardware.



L/H CROP DIVIDER

BOOM TOUCH-DOWN WHEELS



DANGER: Stay clear of overhead power lines. When operating a high clearance sprayer electrical shock or electrocution is possible if contact is made with overhead lines.

1. Locate the boom touch-down wheel package.
2. Assemble the L/H and R/H wheel kits (see pg. 95 of parts catalog).
3. Start the sprayer position the booms in field position and lower them to a comfortable working height.
4. Place the corresponding touch-down wheel assembly in mounting position on the boom (end of outer boom section near breakaway linkage pivot point).
5. Adjust the position of the assembly until the wheel points in the direction of travel.
6. Tighten hardware to hold wheel in place.



BOOM TOUCH-DOWN WHEEL

SPRAYER PRE-DELIVERY CHECKLIST



WARNING: Avoid high-pressure fluids. Escaping fluids can penetrate the skin causing serious injury. Use a piece of cardboard or paper to search for leaks.



DANGER: Stay clear of overhead power lines. When operating a high clearance sprayer electrical shock or electrocution is possible if contact is made with overhead lines

- Check spray system for operating pressure of 120 psi (see operator's manual for procedure).
- Calibrate rate controller and check operation (see operator's manual for procedure).
- Check for spray system leaks.
- Spray water and check function of all nozzles.
- Check for oil leaks.
- Check operation of all hydraulic functions.
- Check operation of speed sensor.
- Check operation of boom tip breakaway.
- Check operation of all clearance lights.
- Check routing of all hoses and wiring for interference and make sure they are secured.
- Check operation of foam marker.
- Check all fluid levels in tractor.
- Check deck stops are adjusted properly.
- Check all hardware tightened to MacDon specifications.
- Grease all locations (see Operator's Manual for locations).
- Make sure all manuals are in the cab.
- Make sure charcoal filter is in the cab ready to be installed by the owner.
- Make sure extra center boom arms are packed with sprayer.
- Make sure storage feet for tank support are packed with sprayer.
- Make sure any components removed from tractor during assembly are packaged with sprayer.

Date Checked: _____ Checked by: _____