

**Case & New Holland Pick Ups**  
**SUSPENSION SPRING UPGRADE KIT**  
**INSTRUCTION MANUAL**

## INTRODUCTION

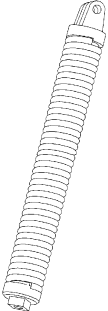
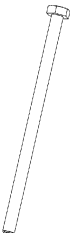
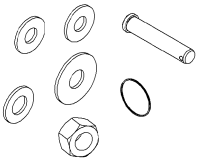

This document is for use when installing Suspension Spring Upgrade Kits on Case and New Holland Pick Ups.

Following is a list of components and hardware included in this kit, tools required, and assembly instructions and drawings to aid in this upgrade. Please note that 2 kits are needed to update a complete unit. The same kit is used for left hand and right hand sides of your pick up.

For further instruction and safety information please refer to the operators manual provided with your pick up.

**Note: Left hand and right hand is referenced from the drivers seat looking forward.**

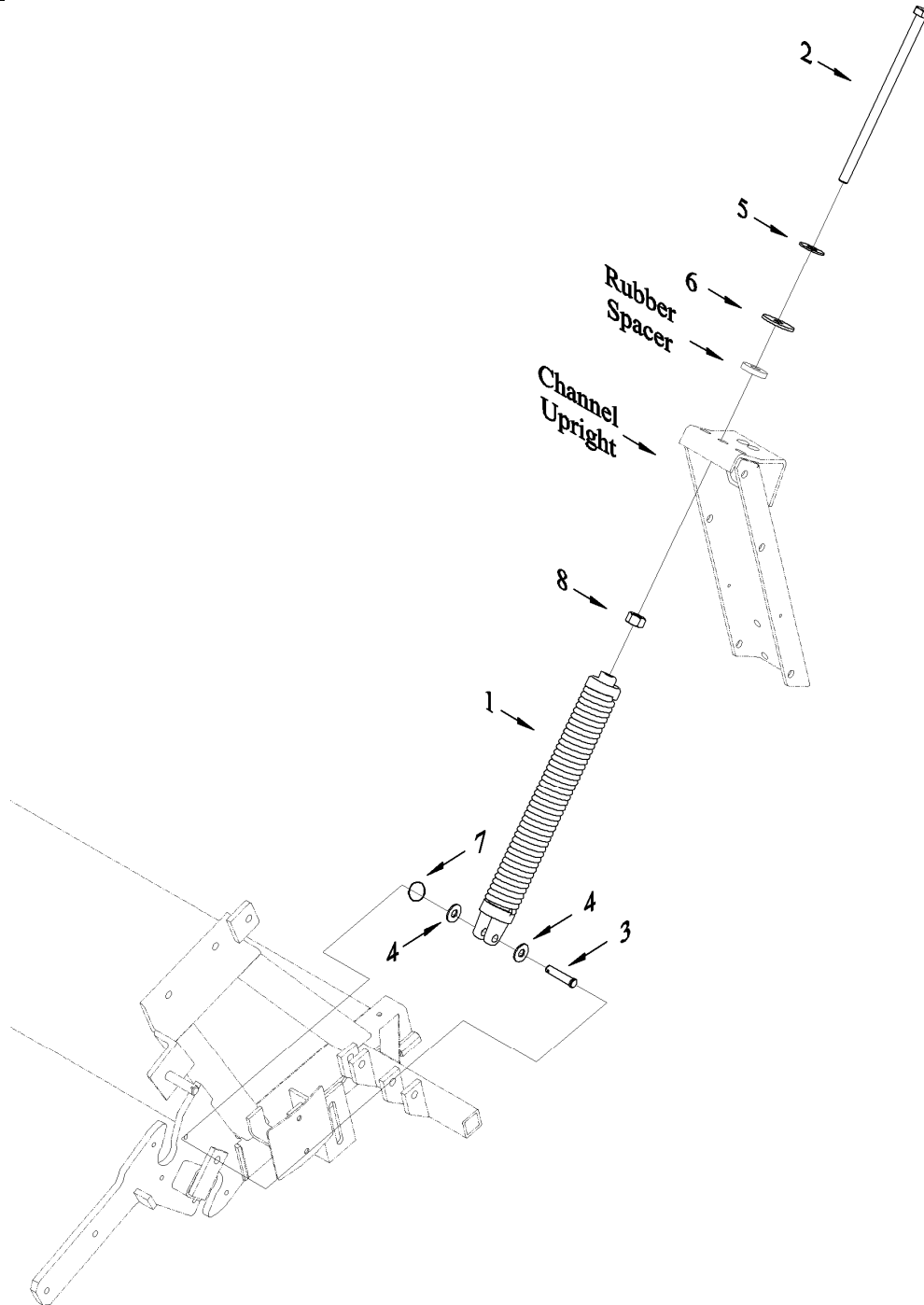
## PARTS

	<u>Item #</u>	<u>Part #</u>	<u>Qty</u>	<u>Description</u>
 D00600	1.	87451999	1	SPRING, EXTENSION, C/W PLUGS
 D00600	2.	87303012	1	BOLT, 5/8"-11X12", GR5, PLTD
 D00600	3.	87532621	1	PIN, 1/2 X 2" EFF LG. CLEVIS, PLTD
	4.	Case: 495-11053 NH: 87364	2	1/2 SAE FLAT WASHER, PLATED
	5.	Case: 496-21066 NH: 86624189	1	WASHER 5/8" HRD PL
	6.	Case: 495-21069 NH: 80299	1	WASHER 5/8" USS PL
	7.	87452005	1	SPLIT RING, 1 1/4"
	8.	Case: 425-1010 NH: 280374	1	5/8 UNC HEX NUT PLATED
 D00600	9.	169229	1	KIT INSTRUCTIONS (THIS DOCUMENT)

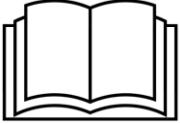
## TOOLS REQUIRED

- Two 15/16" wrenches or wrench and socket
- Two 3/4" wrenches or wrench and socket
- Never seize lubricant
- Drill with 3/4" bit
- Long needle nosed pliers

## ASSEMBLY



D00601



Decals displaying the “Read Operators Manual” symbol are intended to direct the operator to the Operators Manual for further information regarding safety, adjustments, maintenance and/or procedure for specific areas of the unit.



**WARNING:** Make sure the storage braces are disengaged, the header/pick up is lowered to the ground, the combine is shut-off, the key is removed, and all moving parts have stopped before performing this upgrade.



**Storage Brace Disengaged**

- 1) Disengage storage braces and lower pick up to the ground to take the weight off of the suspension springs. It may be necessary to place blocks under the pick up wheels to achieve this.
- 2) Loosen the spring bolt completely to remove it from the spring. Remove the spring by unhooking it at the lower end.
- 3) Drill out the middle hole on the top plate of the channel upright to 3/4" to accommodate the new spring bolt.
- 4) Connect the clevis end of the spring to the spring tab on the pick up frame using the 1/2" clevis pin (#3), and two 1/2" (#4) washers. Use the needle nosed pliers to install the split ring (#7) on the pin. See the assembly diagram on the previous page.
- 5) Place the hardened 5/8" washer (#5), 5/8" USS washer (#6), and rubber spacer onto the spring bolt (#2). Place the bolt through the center hole on the channel upright and thread the 5/8" hex nut (#8) on the end of the bolt. Thread the bolt approximately 3 to 4 inches into the upper spring plug.
- 6) See the Operator's Manual "Suspension Adjustment" section for proper suspension setting.