

# **NEW HOLLAND COMPLETION INSTRUCTIONS**



**CX (60'')**

## TABLE OF CONTENTS

---

The following instructions will guide you through all the steps required to complete the installation of mechanical parts on the header for use with CX combines. If additional information is required and is not covered in these instructions, contact your dealer.

**Note:** For New Holland Combines made prior to MY09 (Model Year), an additional kit (MacDon B5614) is required to enable function of the Auto Header Height Control System. Installation instructions are included with the kit.

**Note:** Left and right hand are referenced from the operator's seat and looking forward.

1. Safety .....	Page 3
2. Tools required .....	Page 4
3. Hardware Identification .....	Page 4
4. Material List .....	Page 4
5. Installation.....	Page 5

# SAFETY

---

## 1. SAFETY

- Carefully read all safety messages in your Operators Manual and this insert before proceeding with conversion.
- Find a spacious, clear and level surface to perform assembly.
- Never service or adjust machinery while running. Lower header to ground, shut off combine and remove key before servicing.
- The Safety Alert Symbol is used in this document to alert the reader to specific safety procedures that must be followed during the assembly completion of the header.

### SAFETY ALERT SYMBOL



### THIS SYMBOL MEANS

-ATTENTION!

-BECOME ALERT!

-YOUR SAFETY IS INVOLVED!

### DANGER:



Indicates an imminently hazardous situation that, if not avoided, will result in death or serious injury.

### WARNING:



Indicates a potentially hazardous situation that, if not avoided, could result in death or serious injury.

### CAUTION:



Indicates a potentially hazardous situation that, if not avoided, may result in minor or moderate injury.

### ATTENTION:

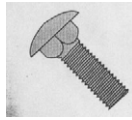
Indicates a potentially hazardous situation that, if not avoided, could result in machine damage.

# COMPLETION KIT INSTRUCTIONS

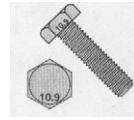
## 2. TOOLS REQUIRED

Wrench, 13mm  
Socket, 13mm  
Wrench, 10mm  
Socket, 10mm  
Hexagon Key, 5mm  
Hexagon Key, 6mm

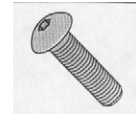
## 3. HARDWARE IDENTIFICATION



Carriage Bolt



Hex Head Bolt



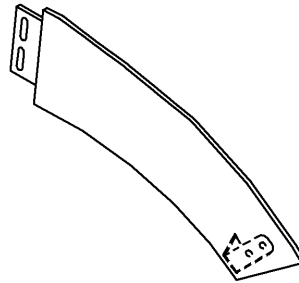
Button Head Cap Screw

## 4. MATERIAL LIST (Items required to complete the header assembly)

Flighting Extension L/H & R/H, qty 1 each

### Hardware for Flighting Extensions

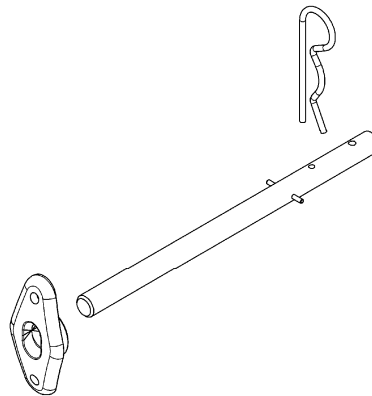
Button Head Capscrew M8 x 1.25 x 25 mm (4)  
Bolt, Carriage M8 x 1.25 x 25mm (4)  
Flat Washer, M8 (12)  
Lock Washer, M8 (8)  
Nut, M8 (8)



Fingers, Guides & Pins (4)

### Hardware for Finger Guides

Bolt, Hex Head, M6 x 1 x 20 mm (8)  
Flat Washer, M6 (16)  
Nut, Lock M6 x 1 (8)



## 5. INSTALLATION INSTRUCTIONS

**Step 1** Verify that all required hardware and components are present.



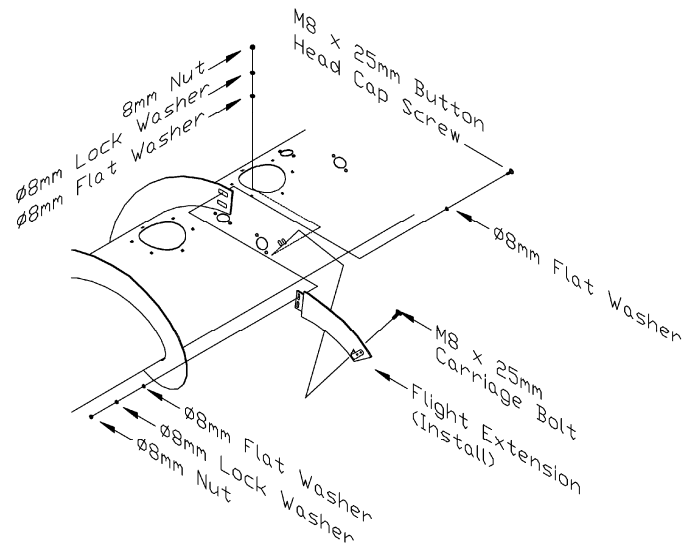
**WARNING:** If header is attached to combine under no circumstances should any service procedure be performed with out the combine safety locks engaged, engine shut off, and key removed. Refer to Safety section in Operators Manual before performing any service procedure.

### Auger Flighting Extension Installation

**Step 2** Place header in a suitable work area and detach from combine if it is not already detached.

**Step 3** Fasten the flighting extensions to the the existing auger flighting using two (2) M8 x 25 button head capscrews, four (4) flat washers, two (2) lock washers and two (2) nuts per extension. Be sure there is a flat washer under the bolt heads and under the lock washers. Be sure the mounting flange on the extension is located on the outboard side of the existing auger flighting.

**Step 4** Remove hand-hole covers as required. Fasten the flighting extensions to the auger tube using M8 carriage bolts, flat washers, lock washers and nuts.

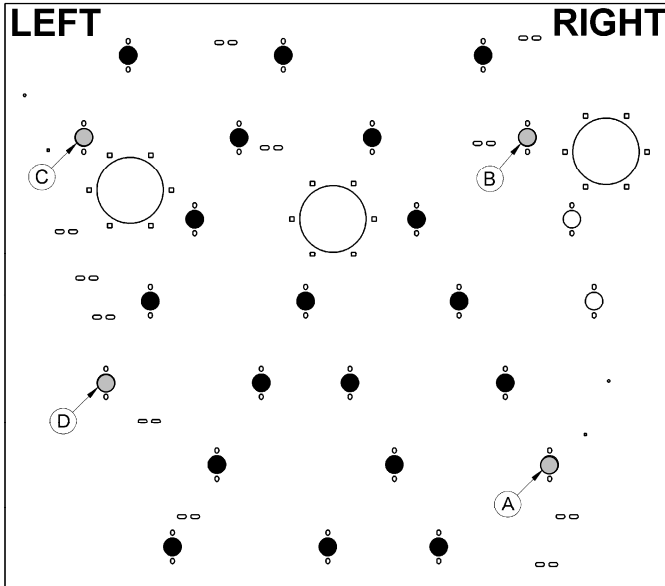


D00415

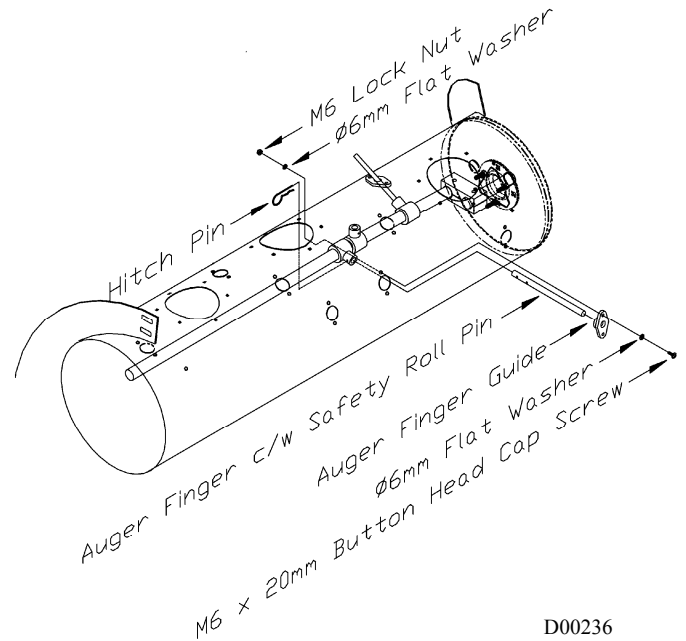
### **Auger Flighting Extension Installation**

**Auger Finger Installation**

**Step 5** Locate the four covered finger hole locations in the auger (A through D shown below).



Remove hand-hole covers as required for access. At locations A, B, C and D, remove finger hole covers and install auger fingers, guides and pins as shown at right using two (2) M6 x 20 hex head bolts, four (4) flat washers and two (2) lock nuts per guide. Be sure there is a flat washer under the bolt heads and under the lock nuts.



D00236

**Auger Finger Installation**

**Step 6** Rotate the auger by hand so that the finger being installed is in a workable area.



**CAUTION: When rotating the auger be sure all people and tools are clear.**

**Step 7** Place the hand-hole covers removed previously back into position and secure with the M6 hardware.