

CASE IH & NEW HOLLAND COMPLETION INSTRUCTIONS



**Case IH
NH CR 970, 980, 9070, 9080 (50")**

TABLE OF CONTENTS

The following instructions will guide you through all the steps required to complete the installation of mechanical parts on the header for use with New Holland CR and Case IH combines. If additional information is required and is not covered in these instructions, contact your dealer.

Note: For New Holland Combines made prior to MY09 (Model Year), an additional kit (MacDon B5614) is required to enable function of the Auto Header Height Control System. Installation instructions are included with the kit.

Note: Left and right hand are referenced from the operator's seat and looking forward.

1. Safety	Page 3
2. Tools required	Page 4
3. Hardware Identification	Page 4
4. Material List	Page 4
5. Installation.....	Page 5

SAFETY

1. SAFETY

- Carefully read all safety messages in your Operators Manual and this insert before proceeding with conversion.
- Find a spacious, clear and level surface to perform assembly.
- Never service or adjust machinery while running. Lower header to ground, shut off combine and remove key before servicing.
- The Safety Alert Symbol is used in this document to alert the reader to specific safety procedures that must be followed during the assembly completion of the header.

SAFETY ALERT SYMBOL



THIS SYMBOL MEANS

-ATTENTION!

-BECOME ALERT!

-YOUR SAFETY IS INVOLVED!

DANGER:



Indicates an imminently hazardous situation that, if not avoided, will result in death or serious injury.

WARNING:



Indicates a potentially hazardous situation that, if not avoided, could result in death or serious injury.

CAUTION:



Indicates a potentially hazardous situation that, if not avoided, may result in minor or moderate injury.

ATTENTION:

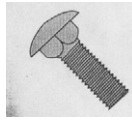
Indicates a potentially hazardous situation that, if not avoided, could result in machine damage.

COMPLETION KIT INSTRUCTIONS

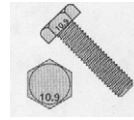
2. TOOLS REQUIRED

Wrench; 13mm
Socket, 13mm
Wrench, 10mm
Socket, 10mm
Hexagon Key, 5mm
Hexagon Key, 6mm

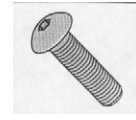
3. HARDWARE IDENTIFICATION



Carriage Bolt



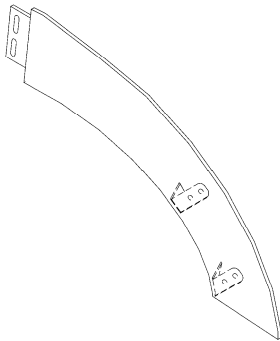
Hex Head Bolt



Button Head Cap Screw

4. MATERIAL LIST (Items required to complete the header assembly)

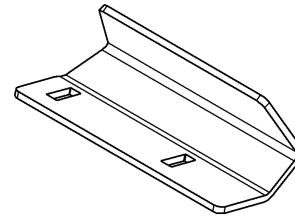
Flighting Extension L/H & R/H, qty 1 each



Hardware for Flighting Extensions

Button Head Capscrew M8 x 1.25 x 25 mm (4)
Bolt, Carriage M8 x 1.25 x 25mm (8)
Flat Washer, M8 (16)
Lock Washer, M8 (12)
Nut, M8 (12)

Stripper Bar, Lower, L/H & R/H, qty 1 each
(L/H shown)



Hardware for Stripper Bars

Bolt, Carriage M8 x 1.25 x 25mm (4)
Flat Washer, M8 (4)
Lock Washer, M8 (4)
Nut, M8 (4)

5. INSTALLATION INSTRUCTIONS

Step 1 Verify that all required hardware and components are present.

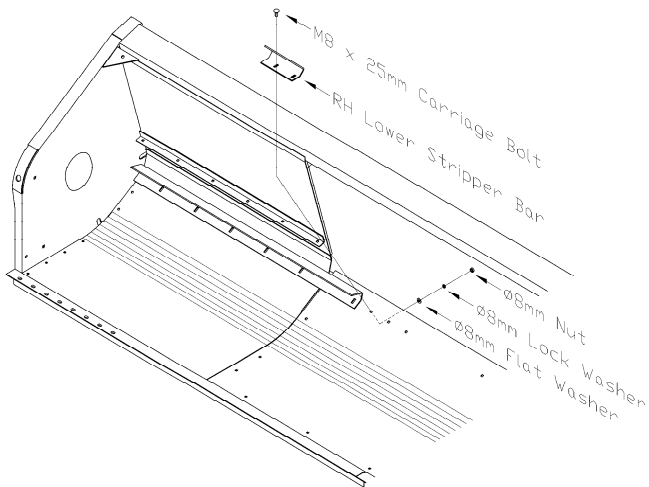


WARNING: If header is attached to combine under no circumstances should any service procedure be performed with out the combine safety locks engaged, engine shut off, and key removed. Refer to Safety section in Operators Manual before performing any service procedure.

Lower Stripper Bar Installation

Step 2 Place header in a suitable work area and detach from combine if it is not already detached.

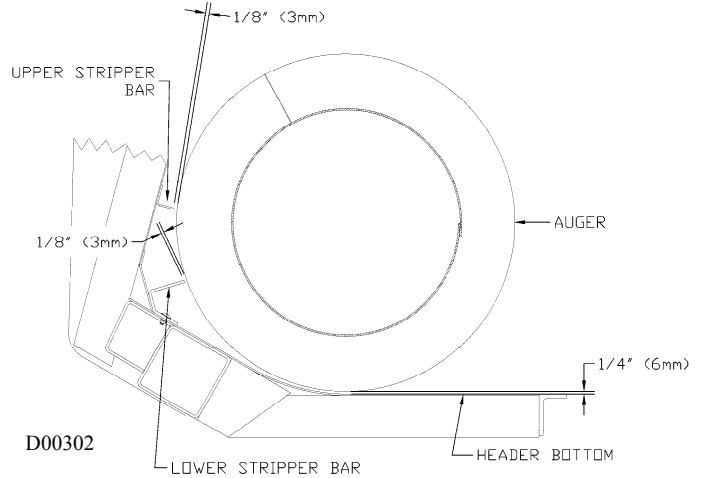
Step 3 Place the stripper bars into position on the header floor. Be sure stripper bars match the orientation of those already installed on the header. Secure (finger tight only) with three (2) M8 carriage bolts, flat washers, lock washers and nuts on each side of the header opening.



D00414

Stripper Bar Installation

Step 4 Adjust stripper bars to achieve a minimum of 3mm (1/8”) clearance to the auger. Minimizing the clearance of the auger and stripper bar can reduce crop carry over. Tighten the stripper bar hardware to 24 N·m (18 ft-lbs)



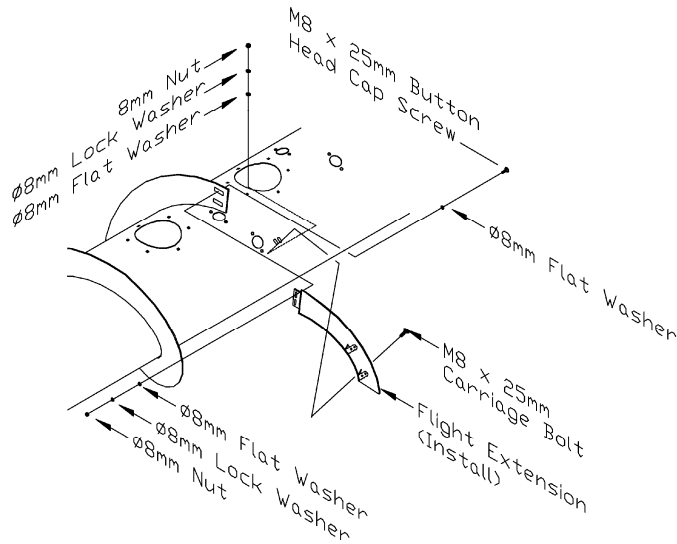
Stripper Bar Adjusting

ATTENTION: If the auger comes in contact with the stripper bar excessive wear will occur. Disconnect the drive shaft from combine and rotate auger by hand to find the minimum clearance, then complete all adjustments from that point.

Auger Flighting Extension Installation

Step 5 Fasten the flighting extensions to the the existing auger flighting using two (2) M8 x 25 button head capscrews, four (4) flat washers, two (2) lock washers and two (2) nuts per extension. Be sure there is a flat washer under the bolt heads and under the lock washers. Be sure the mounting flange on the extension is located on the outboard side of the existing auger flighting.

Step 6 Remove hand-hole covers as required. Fasten the flighting extensions to the auger tube using M8 carriage bolts, flat washers, lock washers and nuts.



D00415

Auger Flighting Extension Installation