

# **NEW HOLLAND COMPLETION INSTRUCTIONS**



**CR 920, 940, 960, 9040, 9060, 9065 (40")**

## TABLE OF CONTENTS

---

The following instructions will guide you through all the steps required to complete the installation of mechanical parts on the header for use with CR combines. If additional information is required and is not covered in these instructions, contact your dealer.

**Note:** For New Holland Combines made prior to MY09 (Model Year), an additional kit (MacDon B5614) is required to enable function of the Auto Header Height Control System. Installation instructions are included with the kit.

**Note:** Left and right hand are referenced from the operator's seat and looking forward.

1. Safety .....	Page 3
2. Tools required .....	Page 4
3. Hardware Identification .....	Page 4
4. Material List .....	Page 4
5. Installation.....	Page 5

# SAFETY

---

## 1. SAFETY

- Carefully read all safety messages in your Operators Manual and this insert before proceeding with conversion.
- Find a spacious, clear and level surface to perform assembly.
- Never service or adjust machinery while running. Lower header to ground, shut off combine and remove key before servicing.
- The Safety Alert Symbol is used in this document to alert the reader to specific safety procedures that must be followed during the assembly completion of the header.

### SAFETY ALERT SYMBOL



### THIS SYMBOL MEANS

-ATTENTION!

-BECOME ALERT!

-YOUR SAFETY IS INVOLVED!

### DANGER:



Indicates an imminently hazardous situation that, if not avoided, will result in death or serious injury.

### WARNING:



Indicates a potentially hazardous situation that, if not avoided, could result in death or serious injury.

### CAUTION:



Indicates a potentially hazardous situation that, if not avoided, may result in minor or moderate injury.

### ATTENTION:

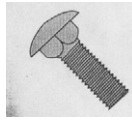
Indicates a potentially hazardous situation that, if not avoided, could result in machine damage.

# COMPLETION KIT INSTRUCTIONS

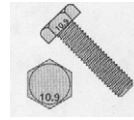
## 2. TOOLS REQUIRED

Wrench; 13mm  
Socket, 13mm  
Wrench, 10mm  
Socket, 10mm  
Hexagon Key, 5mm  
Hexagon Key, 6mm

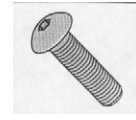
## 3. HARDWARE IDENTIFICATION



Carriage Bolt



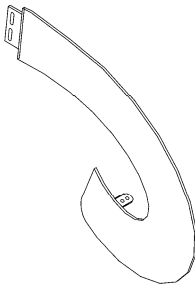
Hex Head Bolt



Button Head Cap Screw

## 4. MATERIAL LIST (Items required to complete the header assembly)

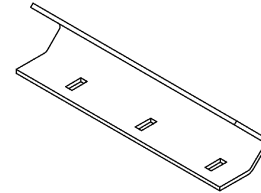
Flighting Extension L/H & R/H, qty 1 each



### Hardware for Flighting Extensions

Button Head Capscrew M8 x 1.25 x 25 mm (4)  
Bolt, Carriage M8 x 1.25 x 25mm (12)  
Flat Washer, M8 (20)  
Lock Washer, M8 (16)  
Nut, M8 (16)

Stripper Bar, Lower, L/H & R/H, qty 1 each



### Hardware for Stripper Bars

Bolt, Carriage M8 x 1.25 x 25mm (6)  
Flat Washer, M8 (6)  
Lock Washer, M8 (6)  
Nut, M8 (6)

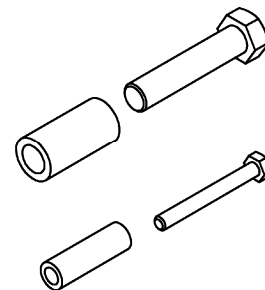
Finger Hole Cover (2)



### Hardware for Finger Hole Covers

Bolt, Hex Head, M6 x 1 x 20 mm (4)  
Flat Washer, M6 (8)  
Nut, Lock M6 x 1 (4)

Driveline Support Spacers & Bolts  
For 13' Header on CR 940, CR 960,  
9040, 9060 & 9065 Combines



**5. INSTALLATION INSTRUCTIONS**

**Step 1** Verify that all required hardware and components are present.

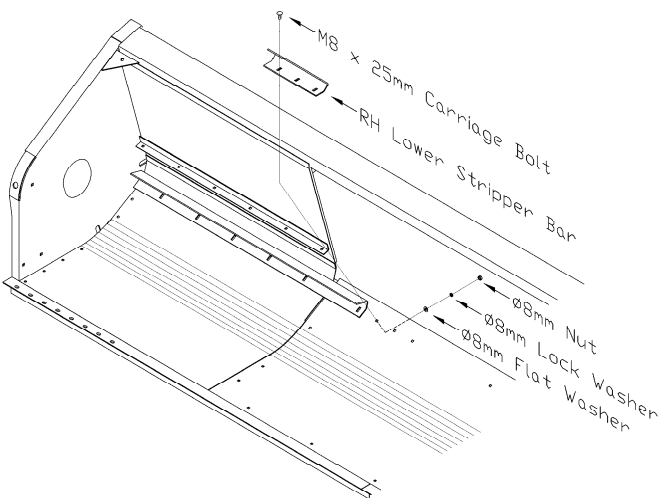


**WARNING:** If header is attached to combine under no circumstances should any service procedure be performed with out the combine safety locks engaged, engine shut off, and key removed. Refer to Safety section in Operators Manual before performing any service procedure.

**Lower Stripper Bar Installation**

**Step 2** Place header in a suitable work area and detach from combine if it is not already detached.

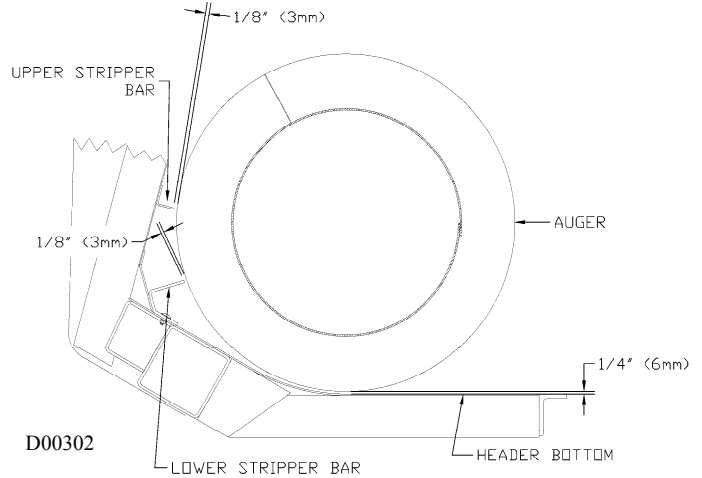
**Step 3** Place the stripper bars into position on the header floor. Be sure stripper bars match the orientation of those already installed on the header. Secure (finger tight only) with three (3) M8 carriage bolts, flat washers, lock washers and nuts on each side of the header opening.



D00301

**Stripper Bar Installation**

**Step 4** Adjust stripper bars to achieve a minimum of 3mm (1/8”) clearance to the auger. Minimizing the clearance of the auger and stripper bar can reduce crop carry over. Tighten the stripper bar hardware to 24 N·m (18 ft-lbs)



**Stripper Bar Adjusting**

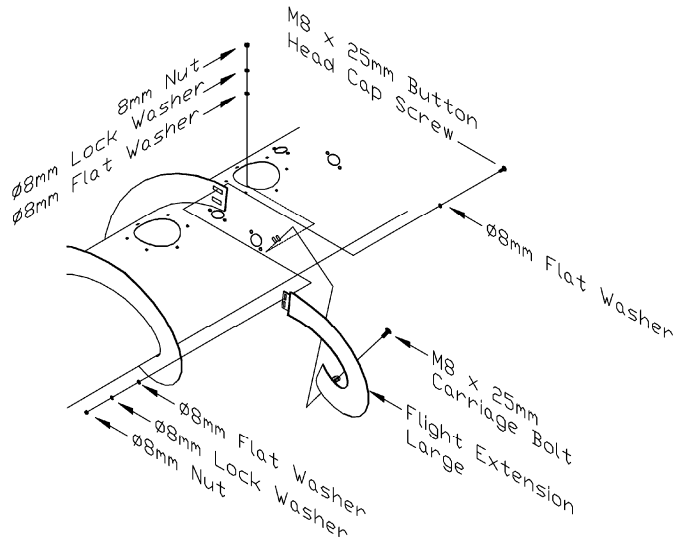
**ATTENTION:** If the auger comes in contact with the stripper bar excessive wear will occur. Disconnect the drive shaft from combine and rotate auger by hand to find the minimum clearance, then complete all adjustments from that point.

# COMPLETION KIT INSTRUCTIONS

## Auger Flighting Extension Installation

**Step 5** Fasten the flighting extensions to the existing auger flighting using two (2) M8 x 25 button head capscrews, four (4) flat washers, two (2) lock washers and two (2) nuts per extension. Be sure there is a flat washer under the bolt heads and under the lock washers. Be sure the mounting flange on the extension is located on the outboard side of the existing auger flighting.

**Step 6** Remove hand-hole covers as required. Fasten the flighting extensions to the auger tube using M8 carriage bolts, flat washers, lock washers and nuts.

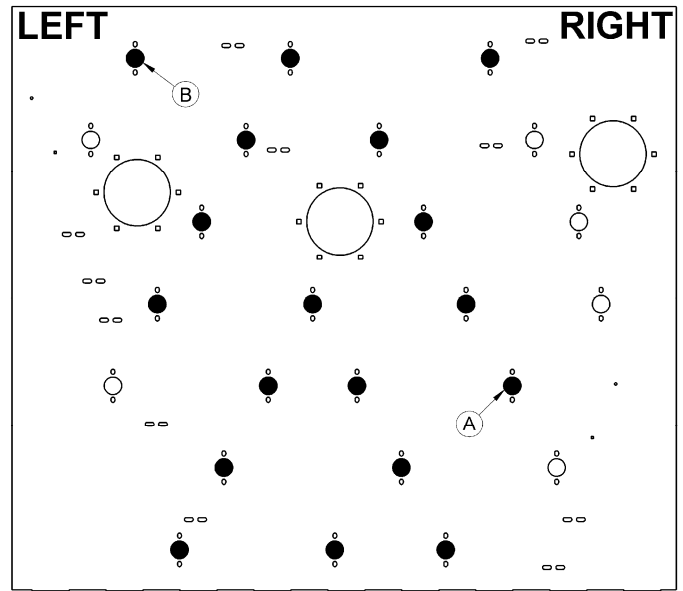


D00300

## **Auger Flighting Extension Installation**

## Auger Finger Removal

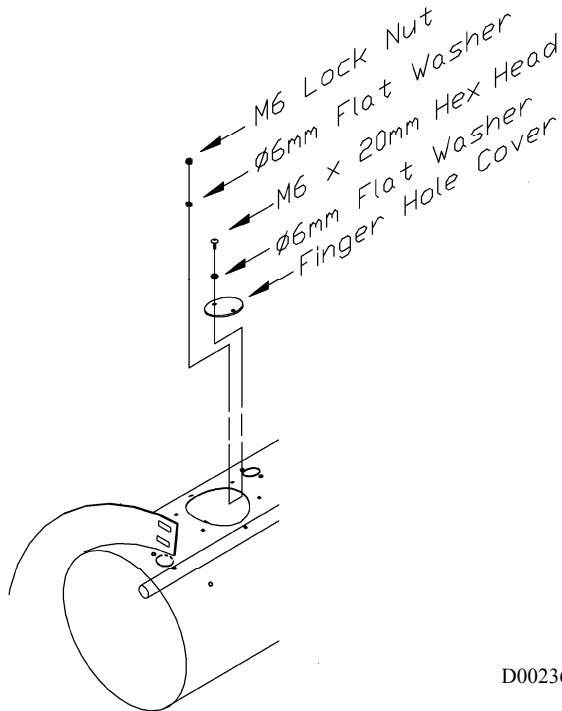
**Step 7** Locate and remove the outermost finger (A) and (B) at each end of the auger. Remove hand-hole covers as required for access to fingers inside auger. Total fingers removed = 2.



## COMPLETION KIT INSTRUCTIONS

### Auger Finger Cover Installation

**Step 8** Install the two auger finger hole covers on the open finger holes using two (2) M6 x 20 hex head bolts, four (4) flat washers, and two (2) nuts per cover. Be sure there is a flat washer under the bolt heads and under the lock nuts.



D00236

### **Auger Finger Cover Installation**

**Step 9** Rotate the auger by hand so that the cover being installed is in a workable area.



**CAUTION:** When rotating the auger be sure all people and tools are clear.

**Step 10** Place the hand-hole covers removed previously back into position and secure with the M6 hardware.

**Step 11** For 13' Header on CR 940, CR 960, 9040, 9060 and 9065 combines:

Remove driveline storage bracket at left side of delivery opening. Reinstall using spacers and bolts provided in this kit as shown:

A – Large spacer

B – M16 x 75 mm long bolt

C – Small spacer

D – M8 x 70 mm long bolt

